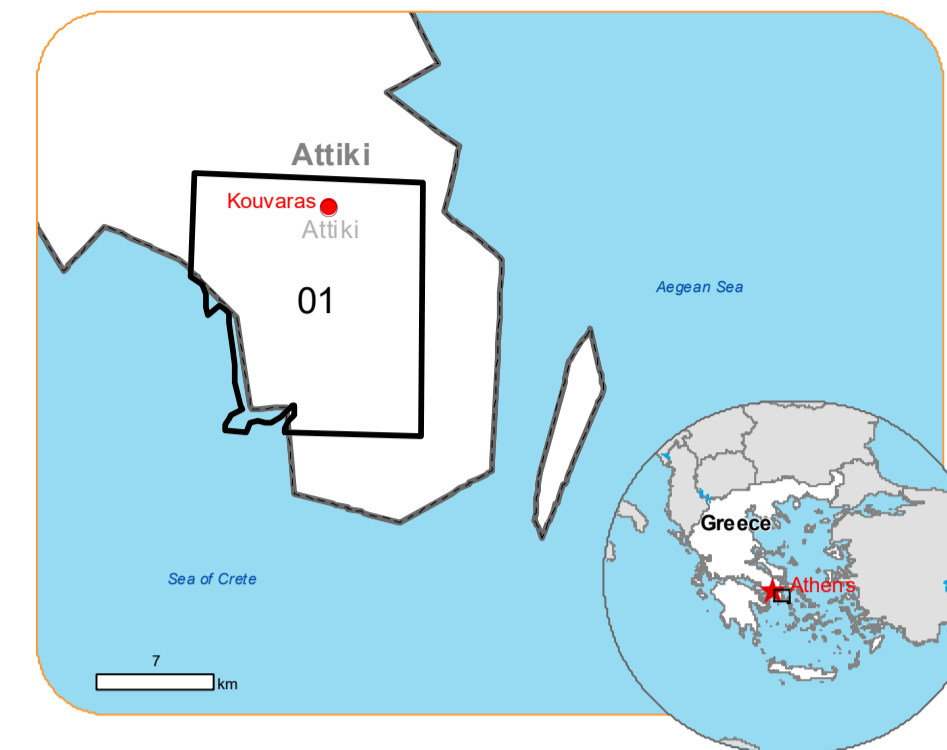




Situation as of 19/07/2023 09:44 UTC

Grading - Overview map 01



Burnt area 3,869.2 ha
Potentially affected population ~ 1700

Affected Built-up and Transportations

Built-Up 273.8 ha

Crisis Information	Affected Land Use-Cover
Burnt Area	Permanent crops
Residential Building, Possibly damaged	Pastures
Non-residential Building, Possibly damaged	Heterogeneous agricultural areas
Long-distance pipeline or line, Possibly damaged	Forest
Possibly damaged	Shrub and/or herbaceous vegetation associations
Highway, No visible damage	Open spaces with little or no vegetation
Main road, No visible damage	Other
Local road, No visible damage	Area of Interest
Track, No visible damage	Municipality
Railway, No visible damage	Placename
Airfield and Heliport, No visible damage	Coastline
Stream	Lake

Event:
In the early afternoon of 17 July 2023, a wildfire affecting eastern Attica in Greece has been signalled. The event is on-going and spreading through low vegetation. Copernicus EMS Rapid Mapping has been activated to provide initial rough estimation products, in order to support the assessment of the extent of the wildfire and the damage caused.

Data sources and analysis: Pre-event image: ESRI World Imagery © DigitalGlobe (acquired on 14/04/2022, resolution 0.6 m). Post-event image: Pleiades-1A/B © CNES (2023), distributed by Airbus DS (acquired on 19/07/2023 at 09:44 UTC, resolution 2.0 m). This image is used as background image. All images are provided under COPERNICUS by the European Union and ESA, all rights reserved.

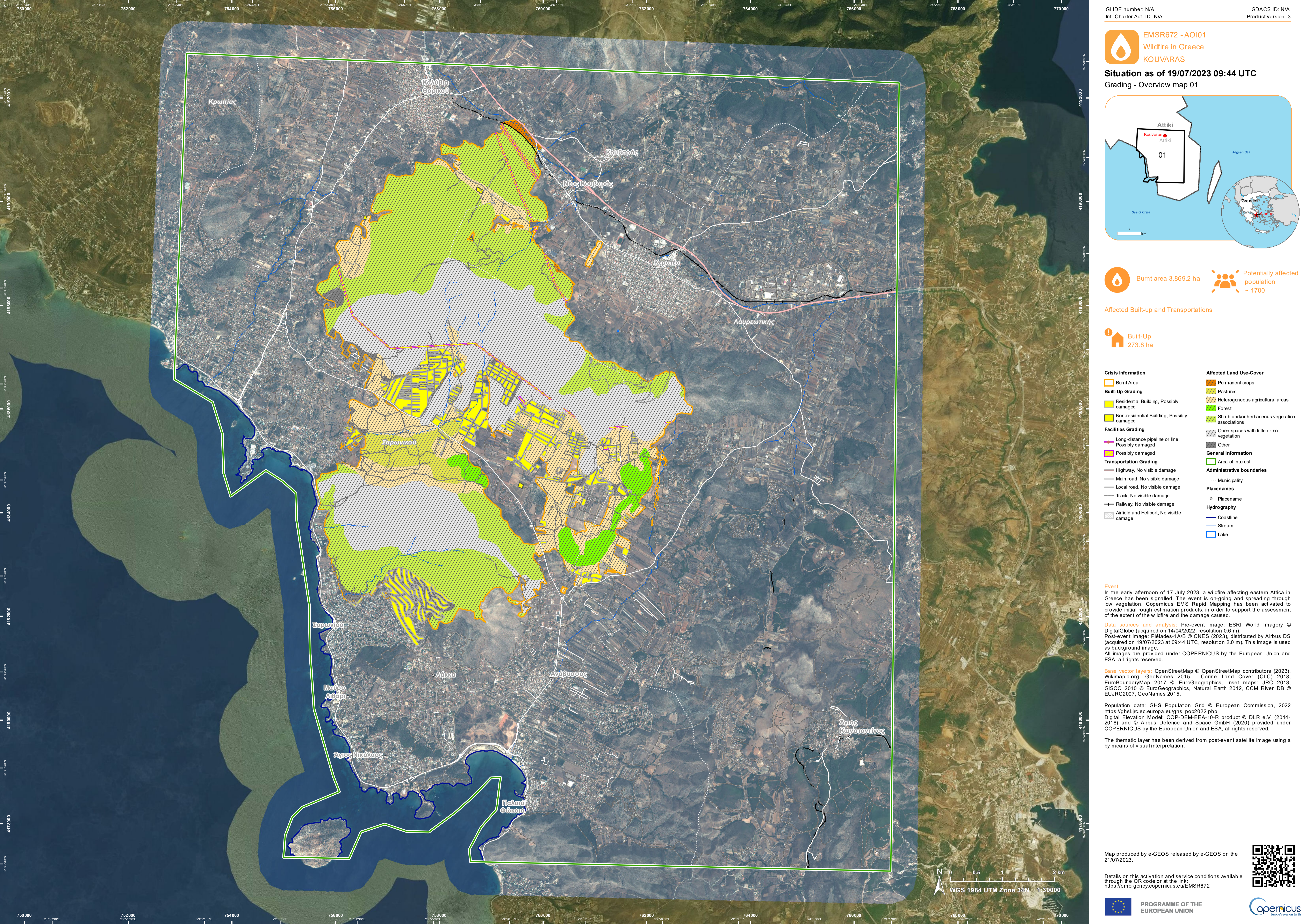
Base vector layers: OpenStreetMap © OpenStreetMap contributors (2023), Wikimapia.org, GeoNames 2015, Corine Land Cover (CLC) 2018, EuroBoundaryMap 2017 © EuroGeographics, Inset maps: JRC 2013, GISCO 2010 © EuroGeographics, Natural Earth 2012, CCM River DB © EUJRC2007, GeoNames 2015.

Population data: GHS Population Grid © European Commission, 2022 https://ghsl.jrc.ec.europa.eu/ghs_pop2022.php
Digital Elevation Model: COP-DEM-EAA-10-R product © DLR e.V. (2014-2018) and © Airbus Defence and Space GmbH (2020) provided under COPERNICUS by the European Union and ESA, all rights reserved.

The thematic layer has been derived from post-event satellite image using a by means of visual interpretation.

Map produced by e-GEOS released by e-GEOS on the 21/07/2023.

Details on this activation and service conditions available through the QR code or at the link: <https://emergency.copernicus.eu/EMSR672>



Consequences within the AOI							
	Unit of measurement		Destroyed	Damaged	Possibly damaged*	Total affected**	Total in AOI
Burnt area	ha						3,869.2
Estimated population	Number of inhabitants					~ 1,700	~ 30,000
Built-up	Residential Buildings	ha	0.0	0.0	270.9	270.9	685.9
	Office buildings	ha	0.0	0.0	0.0	0.0	2.0
	Industrial buildings	ha	0.0	0.0	2.6	2.6	59.8
	Industrial buildings and warehouses	ha	0.0	0.0	0.2	0.2	0.2
	School, university and research buildings	ha	0.0	0.0	0.0	0.0	2.4
	Hospital or institutional care buildings	ha	0.0	0.0	0.0	0.0	0.0
	Military	ha	0.0	0.0	0.0	0.0	16.4
	Cemetery	ha	0.0	0.0	0.0	0.0	2.8
Transportation	Helipad	ha	0.0	0.0	0.0	0.0	0.2
	Highways	km	0.0	0.0	0.0	0.0	22.0
	Primary Road	km	0.0	0.0	0.0	0.0	37.5
	Secondary Road	km	0.0	0.0	0.0	0.0	56.9
	Local Road	km	0.0	0.0	0.0	0.0	706.7
	Cart Track	km	0.0	0.0	0.0	0.0	610.4
	Railway Yard	km	0.0	0.0	0.0	0.0	0.2
	Long-distance railways	km	0.0	0.0	0.0	0.0	14.6
Facilities	Settling Basin	ha	0.0	0.0	0.0	0.0	1.6
	Breakwater	ha	0.0	0.0	0.0	0.0	0.1
	Power plant constructions	ha	0.0	0.0	1.4	1.4	5.3
	Sport and recreation constructions	ha	0.0	0.0	0.0	0.0	20.3
	Long-distance pipelines, communication and electricity lines	km	0.0	0.0	11.6	11.6	53.6
Land use	Shrub and/or herbaceous vegetation association	ha				1,331.9	4,599.1
	Open spaces with little or no vegetation	ha				1,342.1	1,442.8
	Heterogeneous agricultural areas	ha				748.5	4,644.2
	Other	ha				196.2	4,301.6
	Forests	ha				122.0	1,006.0
	Pastures	ha				113.4	347.3
	Permanent crops	ha				15.1	2,678.0

* Presence of damage proxies and proximity with destroyed/damaged asset
 ** Sum of all damage classes

Disclaimer:

Full disclaimer and other helpful information available in the online manual:
<https://emergency.copernicus.eu/mapping/ems/online-manual-rapid-mapping-products>
 © European Union / Copernicus Emergency Management Service

Data access:

All data displayed on the map(s), as well as the Physiography and Land Use - Land Cover layers, are available in the Crisis Information Package and the Base Layer Package (for reference data). The table above is available in editable format in the Crisis Information Package. All products and data are also available for download on the portal.

Access to the portal



PROGRAMME OF THE
EUROPEAN UNION

