

EMSR673 - AOI01
Wildfire in Greece
PANAKTO

Situation as of 21/07/2023 09:31 UTC
Grading - Overview map 01



Burnt area 11,708.7 ha
Potentially affected population ~ 1700

Affected Built-up and Transportations

Built-Up
319 No.

Crisis Information	Affected Land Use-Cover
Burnt Area	Arable land
Built-Up Grading	Permanent crops
Residential Building, Possibly damaged	Pastures
Residential Building, Damaged	Heterogeneous agricultural areas
Non-residential Building, Possibly damaged	Forest
Non residential Building, Damaged	Shrub and/or herbaceous vegetation associations
Non-residential Building, Destroyed	Open spaces with little or no vegetation
Other	Other
Facilities Grading	General Information
Long-distance pipeline or line, Possibly damaged	Area of Interest
Transportation Grading	Placenames
Main road, No visible damage	Placename
Track, No visible damage	Hydrography
Airfield runway, No visible damage	River
Local road, No visible damage	Stream
Railway, No visible damage	
Highway, No visible damage	

Event On the 17 July 2023 at 15:00 UTC, a wildfire is reported to have affected the forest mountainous area of western Attica, Greece. It is estimated that the burnt area has exceeded 4000 hectares so far. According to the Hellenic Fire Service operating against the wildfire there are 140 firefighters, with 5 groups of pedestrian departments, 48 vehicles, 6 water-bombing aircrafts and several helicopter. Personnel and means of Municipalities, Region, armed forces and groups of volunteers are assisting in the emergency. Copernicus EMS Rapid Mapping is requested to provide an initial rough estimation, fire extent monitoring and damage assessment emergency mapping.

Data sources and analysis: Pre-event image: ESRI World Imagery © DigitalGlobe (acquired on 09/12/2022, resolution 0.5 m). Post-event image: WorldView-2 © Maxar Technologies, Inc. (2023), (acquired on 21/07/2023 at 09:31 UTC, resolution 2 m). This image is used as background image. All images are provided under COPERNICUS by the European Union and ESA, all rights reserved.

Base vector layers: OpenStreetMap © OpenStreetMap contributors (2023), Wikimapia.org, GeoNames 2015, Corine Land Cover (CLC) 2018, EuroBoundaryMap 2017 © EuroGeographics, Inset maps: JRC 2013, GISC0 2010 © EuroGeographics, Natural Earth 2012, CCM River DB © EUJRC2007, GeoNames 2015.

Population data: GHS Population Grid © European Commission, 2022 https://ghsl.jrc.ec.europa.eu/ghs_pop2022.php.

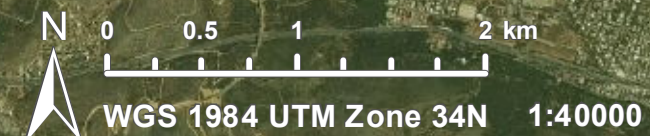
The thematic layer has been derived from post-event satellite image by means of visual interpretation.

The current burnt area cumulates all burnt area extents from previous post-event products.

Disclaimer: Full disclaimer and other helpful information available in the online manual: <https://emergency.copernicus.eu/mapping/ems/online-manual-rapid->

Map produced by SERTIT released by e-GEOS on the 22/07/2023.

Details on this activation and service conditions available through the QR code or at the link: <https://emergency.copernicus.eu/EMSR673>



Consequences within the AOI						
	Unit of measurement	Destroyed	Damaged	Possibly damaged*	Total affected**	Total in AOI
Burnt area	ha					11 708.7
Estimated population	Number of inhabitants				~ 1 700	~ 24 000
Built-up	Residential Buildings	ha	0.0	0.0	0.0	902.1
	Office buildings	ha	0.0	0.0	0.0	16.9
	Wholesale and retail trade buildings	ha	0.0	0.0	0.0	7.1
	Industrial buildings	ha	0.0	0.0	0.0	1 266.1
	Reservoirs, silos and warehouses	ha	0.0	0.0	0.0	8
	School, university and research buildings	ha	0.0	0.0	0.0	5.3
	Hospital or institutional care buildings	ha	0.0	0.0	0.0	6.5
	Buildings used as places of worship and for religious activities	ha	0.0	0.0	0.0	4
	Other buildings not elsewhere classified	ha	0.0	0.0	0.0	2
	Military	ha	0.0	0.0	0.0	103.4
	Cemetery	ha	0.0	0.0	0.0	7.2
	Communication buildings, stations, terminals and associated buildings	ha	0.0	0.0	0.0	3
	Unclassified	ha	0.0	0.0	0.0	234
	Residential Buildings	No.	0	10	215	225
	Non-Residential Buildings	No.	6	19	69	94
Transportation	Airfield runways	ha	0.0	0.0	0.0	103.4
	Helipport	ha	0.0	0.0	0.0	0.1
	Airfield runways	km	0.0	0.0	0.0	5.0
	Highways	km	0.0	0.0	0.0	38.2
	Primary Road	km	0.0	0.0	0.0	28.0
	Secondary Road	km	0.0	0.0	0.0	45.9
	Local Road	km	0.0	0.0	0.0	512.9
	Cart Track	km	0.0	0.0	0.0	696.0
	Long-distance railways	km	0.0	0.0	0.0	31.3
Facilities	Constructions for mining or extraction	ha	0.0	0.0	0.0	441.7
	Power plant constructions	ha	0.0	0.0	0.0	2.2
	Sport and recreation constructions	ha	0.0	0.0	0.0	27.8
	Other civil engineering works not elsewhere classified	ha	0.0	0.0	0.0	21.1
	Not Applicable	ha	0.0	0.0	0.0	31.7
	Long-distance pipelines, communication and electricity lines	km	0.0	0.0	43.2	114.9
	Local pipelines and cables	km	0.0	0.0	0.0	2.1
Land use	Shrub and/or herbaceous vegetation association	ha			7539.2	15 116.9
	Forests	ha			3114.5	5 482.9
	Heterogeneous agricultural areas	ha			508.7	3 089.7
	Open spaces with little or no vegetation	ha			174.0	515.7
	Pastures	ha			138.5	1 170.7
	Other	ha			125.3	3 201.7
	Permanent crops	ha			103.0	709.8
	Arable land	ha			5.7	1 020.4
* Presence of damage proxies and proximity with destroyed/damaged asset						
** Sum of all damage classes						

Disclaimer:

Full disclaimer and other helpful information available in the online manual:
<https://emergency.copernicus.eu/mapping/ems/online-manual-rapid-mapping-products>
 © European Union / Copernicus Emergency Management Service

Data access:

All data displayed on the map(s), as well as Land Use - Land Cover layer(s), are available in the Crisis Information Package and the Base Layer Package (for reference data). The table above is available in editable format in the Crisis Information Package. All products and data are also available for download on the portal.

Access to the portal

