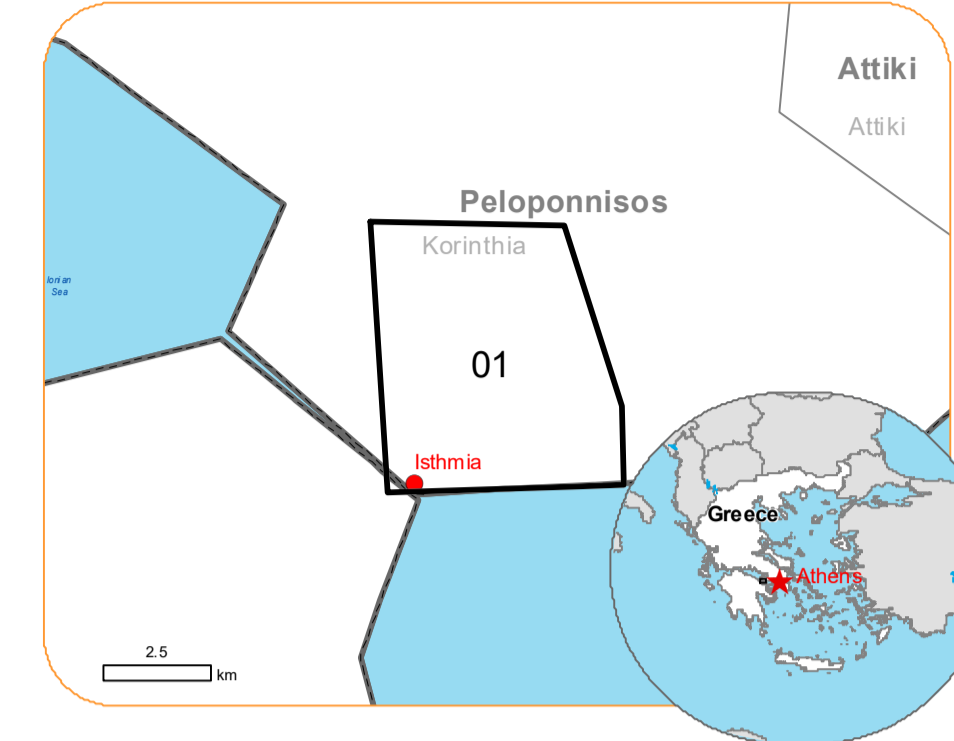




**Situation as of 20/07/2023 09:35 UTC**  
 Grading - Overview map 01



**Burnt area**  
 1,196.2 ha

**Potentially affected population**  
 ~ 500

Affected Built-up and Transportations

**Built-Up**  
 157 No.

**Crisis Information**

**Burnt Area**

**Built-Up Grading**

- Residential Building, Possibly damaged
- Residential Building, Damaged
- Non-residential Building, Possibly damaged

**Facilities Grading**

- Long-distance pipeline or line, Possibly damaged

**Transportation Grading**

- Highway, No visible damage
- Main road, No visible damage
- Local road, No visible damage
- Track, No visible damage
- Railway, No visible damage

**Affected Land Use-Cover**

- Permanent crops
- Heterogeneous agricultural areas
- Forest
- Shrub and/or herbaceous vegetation associations
- Other

**General Information**

**Placenames**

- Placename

**Hydrography**

- Coastline
- Stream
- Open Water
- River

**Event:**  
 In the afternoon 17 July 2023, a fire broke out near Kallithea village and is still ongoing. Residents of the cities of Kalamaki, Isthmia, Paradissos, Kallithea Pefkia and Irini have been ordered to evacuate. According to the Hellenic Fire Brigade currently 120 firefighters with 43 fire engines, 4 earth crews, 9 Water bomber aircraft, 2 helicopters and municipal water tanks are engaged in response activities for this fire. Staff and assets from the municipalities, regions, armed forces and groups of volunteers have been mobilised. Copernicus EMS Rapid Mapping is requested to provide an initial rough estimation, in order to support the monitoring and assessment of the extent of the wildfire and the damage caused.

**Data sources and analysis:**  
 Pre-event image: ESRI World Imagery © DigitalGlobe (acquired on 19/10/2022, resolution 0.5 m).  
 Post-event image: Pléiades-1A © CNES (2023), distributed by Airbus DS (acquired on 20/07/2023 at 09:35 UTC, resolution 2.0 m). This image is used as background image.

All images are provided under COPERNICUS by the European Union and ESA, all rights reserved.

Base vector layers: OpenStreetMap © OpenStreetMap contributors (2022), Wikimapia.org, GeoNames 2015, Corine Land Cover (CLC) 2018, EuroBoundaryMap 2017 © EuroGeographics.

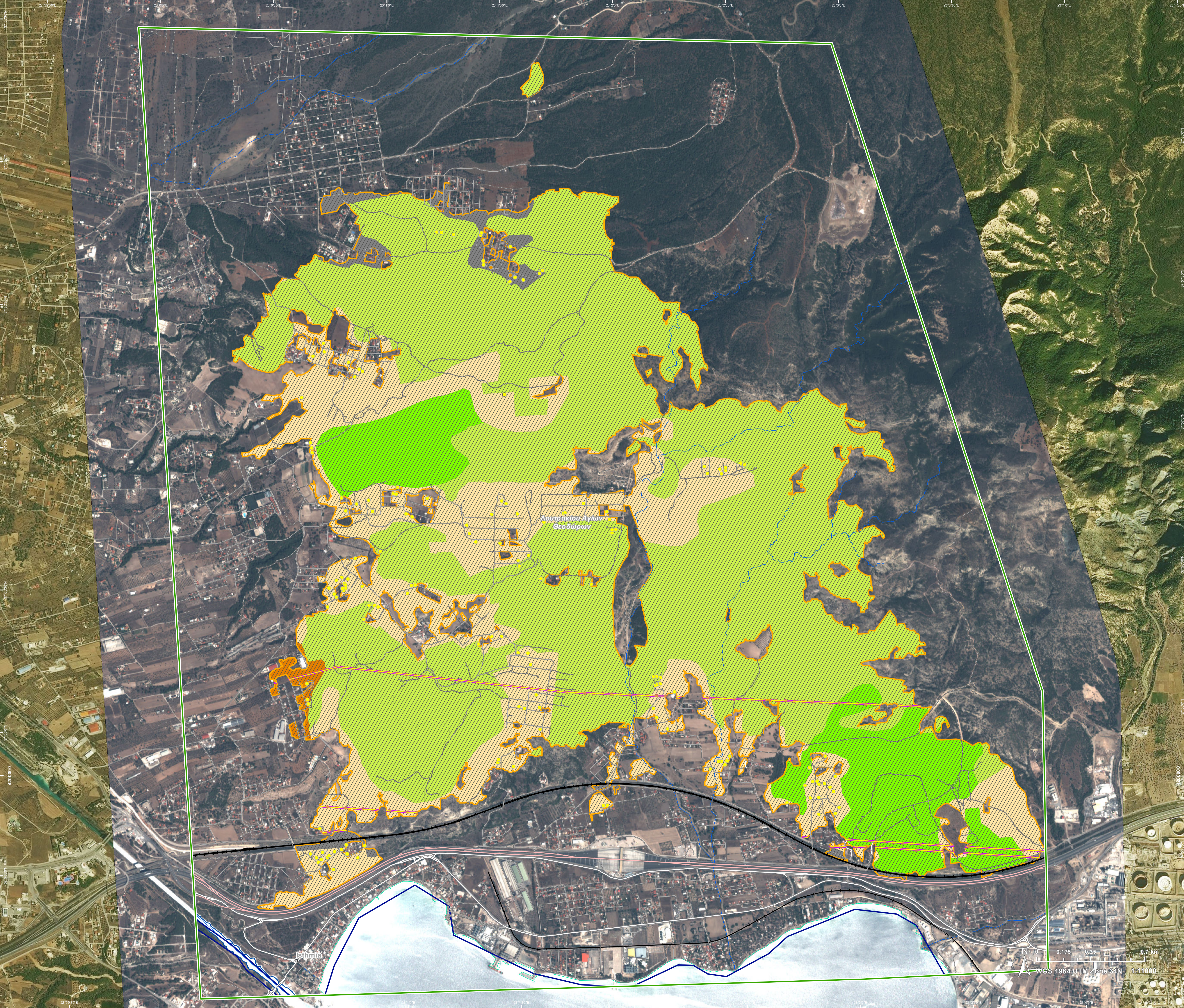
Population data: GHS Population Grid © European Commission, 2022 [https://ghsl.jrc.ec.europa.eu/ghs\\_pop2022.php](https://ghsl.jrc.ec.europa.eu/ghs_pop2022.php)

Digital Elevation Model: SRTM 30 m (NASA/USGS)

The thematic layer has been derived from post-event satellite image by means of visual interpretation (NOTE: The current burnt area cumulates all burnt area extents from previous post-event products.).

Map produced by GAFAG released by e-GEOS on the 21/07/2023.

Details on this activation and service conditions available through the QR code or at the link: <https://emergency.copernicus.eu/EMSR674>



Consequences within the AOI							
	Unit of measurement	Destroyed	Damaged	Possibly damaged*	Total affected**	Total in AOI	
Burnt area	ha					1,196.2	
Estimated population	Number of inhabitants				~ 500	~ 2,800	
Built-up	Residential Buildings	ha	0.0	0.0	0.0	0.0	15.1
	Industrial buildings	ha	0.0	0.0	0.0	0.0	14.6
	Cemetery	ha	0.0	0.0	0.0	0.0	1.0
	Residential Buildings	No.	0	2	154	156	156
	Non-residential farm buildings	No.	0	0	1	1	1
Transportation	Highways	km	0.0	0.0	0.0	0.0	11.5
	Primary Road	km	0.0	0.0	0.0	0.0	7.5
	Secondary Road	km	0.0	0.0	0.0	0.0	7.1
	Local Road	km	0.0	0.0	0.0	0.0	143.4
	Cart Track	km	0.0	0.0	0.0	0.0	66.7
	Long-distance railways	km	0.0	0.0	0.0	0.0	15.4
Facilities	Sport and recreation constructions	ha	0.0	0.0	0.0	0.0	0.3
	Other civil engineering works not elsewhere classified	ha	0.0	0.0	0.0	0.0	9.4
	Long-distance pipelines, communication and electricity lines	km	0.0	0.0	6.8	6.8	19.0
Land use	Shrub and/or herbaceous vegetation association	ha				738.9	1,435.7
	Heterogeneous agricultural areas	ha				292.3	1,070.0
	Forests	ha				134.3	182.4
	Other	ha				24.4	465.2
	Permanent crops	ha				6.3	43.7
* Presence of damage proxies and proximity with destroyed/damaged asset							
** Sum of all damage classes							

**Disclaimer:**

Full disclaimer and other helpful information available in the online manual:  
<https://emergency.copernicus.eu/mapping/ems/online-manual-rapid-mapping-products>  
 © European Union / Copernicus Emergency Management Service

**Data access:**

All data displayed on the map(s), as well as the Physiography and Land Use - Land Cover layers, are available in the Crisis Information Package and the Base Layer Package (for reference data). The table above is available in editable format in the Crisis Information Package. All products and data are also available for download on the portal.

Access to the portal



PROGRAMME OF THE  
EUROPEAN UNION

