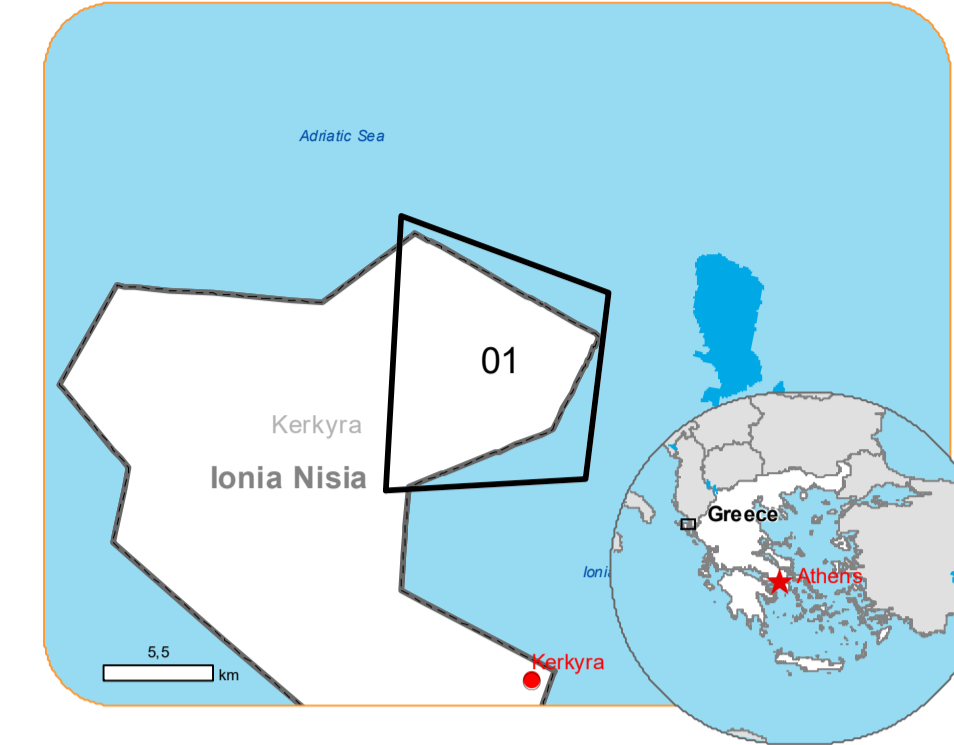




Situation as of 29/07/2023 10:06 UTC
Grading - Overview map 01



Burnt area 2,177.1 ha
Potentially affected population ~ 200

Affected Built-up and Transportations

Built-Up
95 No.

Crisis Information

Burnt Area

Built-Up Grading

- Unclassified Building, Possibly damaged
- Unclassified Building, Damaged
- Residential Building, Possibly damaged
- Residential Building, Damaged
- Non-residential Building, Possibly damaged
- Non-residential Building, Damaged

Affected Land Use-Cover

- Permanent crops
- Heterogeneous agricultural areas
- Forest
- Shrub and/or herbaceous vegetation associations
- Open spaces with little or no vegetation
- Other

General Information

Area of Interest

Administrative boundaries

Municipality

Placenames

Placename

Hydrography

- Coastline
- Stream
- Lake
- Land Subject to Inundation

Event:

A wildfire that started at Sunday, on July 23 afternoon at 15:50 (UTC) in a forest area near Loubes village on Corfu (Kerkira) island is ongoing. Residents of the villages Santa, Megoula, Porta, Pala Perithia, Sines, Rou, Katavolo, Kentroma, Tritsi, Kokoklia, Sarakiniatika, Plagia, Kalami, Data sources and analysis: Pre-event image: ESRI World Imagery (2021) (acquired on 17/07/2021, resolution 0.31 m). Post-event image: Pleiades 1B (2023), (acquired on 29/07/2023 at 10:06 UTC, resolution 2.0 m). This image is used as background image. All images are provided under COPERNICUS by the European Union and ESA, all rights reserved.

Base vector layers: OpenStreetMap © OpenStreetMap contributors (2023), Wikimapia.org, GeoNames 2015, Corine Land Cover (CLC) 2018, EuroBoundaryMap 2017 © EuroGeographics, Inset maps: JRC 2013, GISCO 2010 © EuroGeographics, Natural Earth 2012, CCM River DB © EUJRC2007, GeoNames 2015.

Population data: GHS Population Grid © European Commission, 2022 https://ghs.jrc.ec.europa.eu/ghs_pop2022.php Digital Elevation Model: COP-DEM-EEA-10-R product © DLR e.V. (2014- 2018) and © Airbus Defence and Space GmbH (2020) provided under COPERNICUS by the European Union and ESA, all rights reserved.

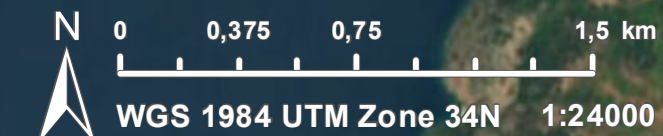
The thematic layer has been derived from post-event satellite image by means of visual interpretation.

The current Burnt Area Delineation cumulates all burnt area extents from previous post-event products.

Disclaimer: Full disclaimer and other helpful information available in the online manual: https://emergency.copernicus.eu/mapping/ems/online-manual-rapid-mapping-products.

Map produced by CLS released by e-GEOS on the 29/07/2023.

Details on this activation and service conditions available through the QR code or at the link: https://emergency.copernicus.eu/EMSR677



Consequences within the AOI							
	Unit of measurement	Destroyed	Damaged	Possibly damaged*	Total affected**	Total in AOI	
Burnt area	ha					2 177,1	
Estimated population	Number of inhabitants				~ 200	~ 3 800	
Built-up	Residential Buildings	No.	0	5	37	42	147
	Wholesale and retail trade buildings	No.	0	0	0	0	3
	Industrial buildings	No.	0	0	0	0	1
	School, university and research buildings	No.	0	0	0	0	1
	Buildings used as places of worship and for religious activities	No.	0	0	1	1	8
	Other buildings not elsewhere classified	No.	0	0	1	1	6
	Building point	No.	0	6	6	12	12
	Hotel buildings	No.	0	0	0	0	36
	Other short-stay accommodation buildings	No.	0	0	0	0	4
	Communication buildings, stations, terminals and associated building	No.	0	0	0	0	1
Unclassified	No.	0	18	21	39	1 524	
Transportation	Primary Road	km	0,0	0,0	0,0	0,0	2,1
	Secondary Road	km	0,0	0,0	0,0	0,0	49,3
	Local Road	km	0,0	0,0	0,0	0,0	97,7
	Cart Track	km	0,0	0,0	0,0	0,0	225,4
Facilities	Settling Basin	ha	0,0	0,0	0,0	0,0	0,2
	Breakwater	ha	0,0	0,0	0,0	0,0	0,0
	Sport and recreation constructions	ha	0,0	0,0	0,0	0,0	4,0
	Other civil engineering works not elsewhere classified	ha	0,0	0,0	0,0	0,0	1,9
	Local pipelines and cables	km	0,0	0,0	0,0	0,0	1,2
Land use	Open spaces with little or no vegetation	ha				1 367,2	1 951,1
	Shrub and/or herbaceous vegetation association	ha				674,6	2 635,9
	Heterogeneous agricultural areas	ha				133,3	1 647,5
	Permanent crops	ha				1,4	1 140,6
	Other	ha				0,4	4 423,9
	Forests	ha				0,2	41,1
	Inland wetlands	ha				0,0	34,5
	Pastures	ha				0,0	130,7
* Presence of damage proxies and proximity with destroyed/damaged asset							
** Sum of all damage classes							

Disclaimer:

Full disclaimer and other helpful information available in the online manual:
<https://emergency.copernicus.eu/mapping/ems/online-manual-rapid-mapping-products>
 © European Union / Copernicus Emergency Management Service

Data access:

All data displayed on the map(s), as well as Land Use - Land Cover layer(s), are available in the Crisis Information Package and the Base Layer Package (for reference data). The table above is available in editable format in the Crisis Information Package. All products and data are also available for download on the portal.

Access to the portal



PROGRAMME OF THE
EUROPEAN UNION

