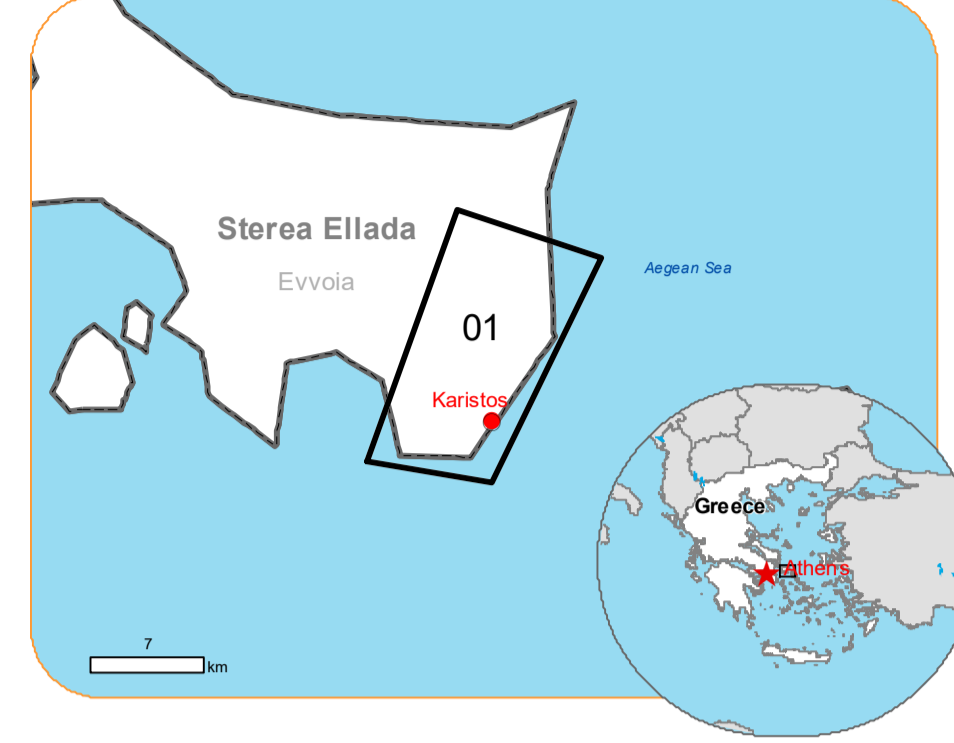


**EMSR678 - AOI01**  
**Wildfire in Greece**  
**KARISTOS**

**Situation as of 28/07/2023 09:24 UTC**  
Grading MONIT01 - Overview map 01



**Burnt area 1,968.3 ha**  
 **Potentially affected population ~ 70**

**Affected Built-up**

**Built-Up 0.5 ha**

**Crisis Information**

- Burnt Area**
- Residential Building, Possibly damaged**
- Residential Building, Not analysed**
- Main road, No visible damage**
- Local road, No visible damage**
- Track, No visible damage**

**Affected Land Use-Cover**

- Pastures**
- Heterogeneous agricultural areas**
- Forest**
- Shrub and/or herbaceous vegetation associations**
- Open spaces with little or no vegetation**
- Other**

**General Information**

- Area of Interest**
- Placenames**
- Placename**
- Hydrography**
- Stream**
- Lake**

**Event:**  
A wildfire that started at Sunday, on July 23 noon (12:30 local time) in a forest area near Platanios village in Evia island is ongoing. Residents of the villages Platis Gialos, Livadi, Kastri, Potami, Pemaraki and Platanios were ordered to evacuate. According to the Hellenic Fire Service, 3 aircrafts and 2 helicopters are currently operating in the area. Copernicus EMS Rapid Mapping is requested to provide initial rough estimation, wildfire extent and damage assessment emergency mapping.

**Data sources and analysis:**  
Pre-event image: Sentinel-2A/B (2023) (acquired on 19/07/2023 at 09:05 UTC, resolution 10.0 m).  
Post-event image: Pleiades-1A/B © CNES (2023), distributed by Airbus DS (acquired on 28/07/2023 at 09:24 UTC, resolution 2.0 m). This image is used as background image.  
All images are provided under COPERNICUS by the European Union and ESA, all rights reserved.

Base vector layers: OpenStreetMap © OpenStreetMap contributors (current year), Wikimapia.org, GeoNames 2015, Corine Land Cover (CLC) 2018, EuroBoundaryMap 2017 © EuroGeographics.  
Inset maps: JRC 2013, GISCO 2010 © EuroGeographics, Natural Earth 2012, CCM River DB © EUJRC2007, GeoNames 2015.

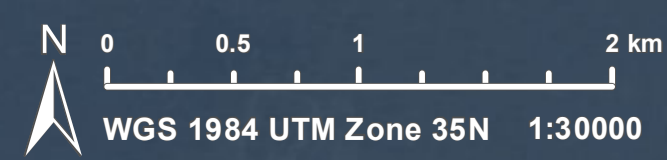
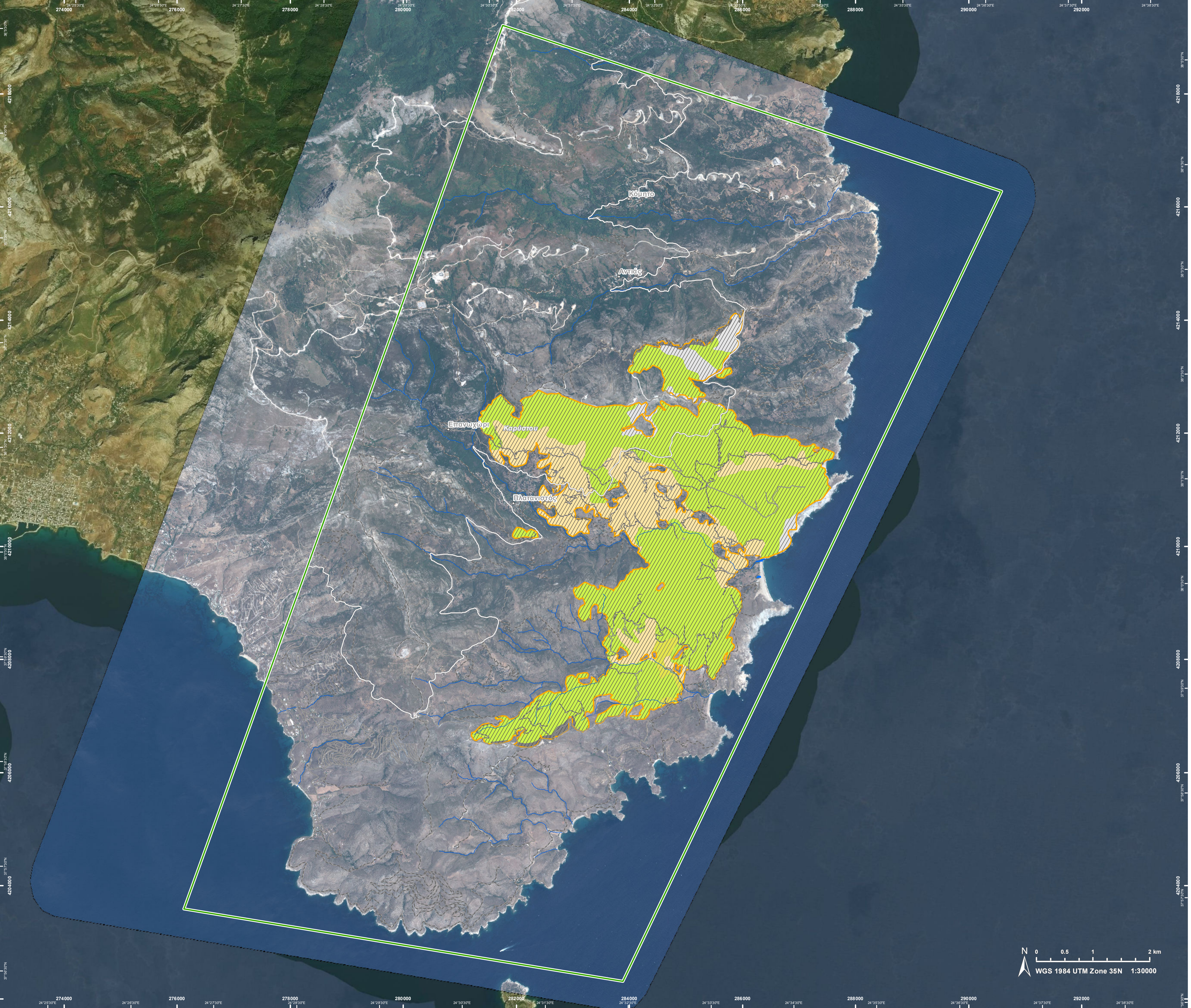
Population data: GHS Population Grid © European Commission, 2022 [https://ghsl.jrc.ec.europa.eu/ghs\\_pop2022.php](https://ghsl.jrc.ec.europa.eu/ghs_pop2022.php)

The thematic layer has been derived from post-event satellite image using a semi-automatic approach OR by means of visual interpretation.

**Disclaimer:** Full disclaimer and other helpful information available in the online manual: <https://emergency.copernicus.eu/mapping/ems/online-manual-rapid-mapping-products>.

Map produced by e-GEOS released by e-GEOS on the 28/07/2023.

Details on this activation and service conditions available through the QR code or at the link: <https://emergency.copernicus.eu/EMSR678>





Consequences within the AOI							
		Unit of measurement	Destroyed	Damaged	Possibly damaged*	Total affected**	Total in AOI
Burnt area		ha					1,968.3
Estimated population		Number of inhabitants				~ 70	~ 450
Built-up	Residential Buildings	ha	0.0	0.0	0.5	0.5	9.1
	Military	ha	0.0	0.0	0.0	0.0	3.0
	Unclassified	ha				0.0	63
Transportation	Secondary Road	km	0.0	0.0	0.0	0.0	38.0
	Local Road	km	0.0	0.0	0.0	0.0	116.2
	Cart Track	km	0.0	0.0	0.0	0.0	240.9
Facilities	Sport and recreation constructions	ha	0.0	0.0	0.0	0.0	0.1
	Long-distance pipelines, communication and electricity lines	km	0.0	0.0	0.0	0.0	27.1
	Local pipelines and cables	km	0.0	0.0	0.0	0.0	6.5
Land use	Shrub and/or herbaceous vegetation association	ha				1,418.5	8,328.7
	Heterogeneous agricultural areas	ha				432.7	1,457.7
	Open spaces with little or no vegetation	ha				73.6	183.2
	Pastures	ha				23.5	111.0
	Other	ha				20.0	2,957.4
	Forests	ha				0.0	523.8
* Presence of damage proxies and proximity with destroyed/damaged asset							
** Sum of all damage classes							

**Disclaimer:**

Full disclaimer and other helpful information available in the online manual:  
<https://emergency.copernicus.eu/mapping/ems/online-manual-rapid-mapping-products>  
 © European Union / Copernicus Emergency Management Service

**Data access:**

All data displayed on the map(s), as well as the Physiography and Land Use - Land Cover layers, are available in the Crisis Information Package and the Base Layer Package (for reference data). The table above is available in editable format in the Crisis Information Package. All products and data are also available for download on the portal.

Access to the portal



PROGRAMME OF THE  
EUROPEAN UNION

