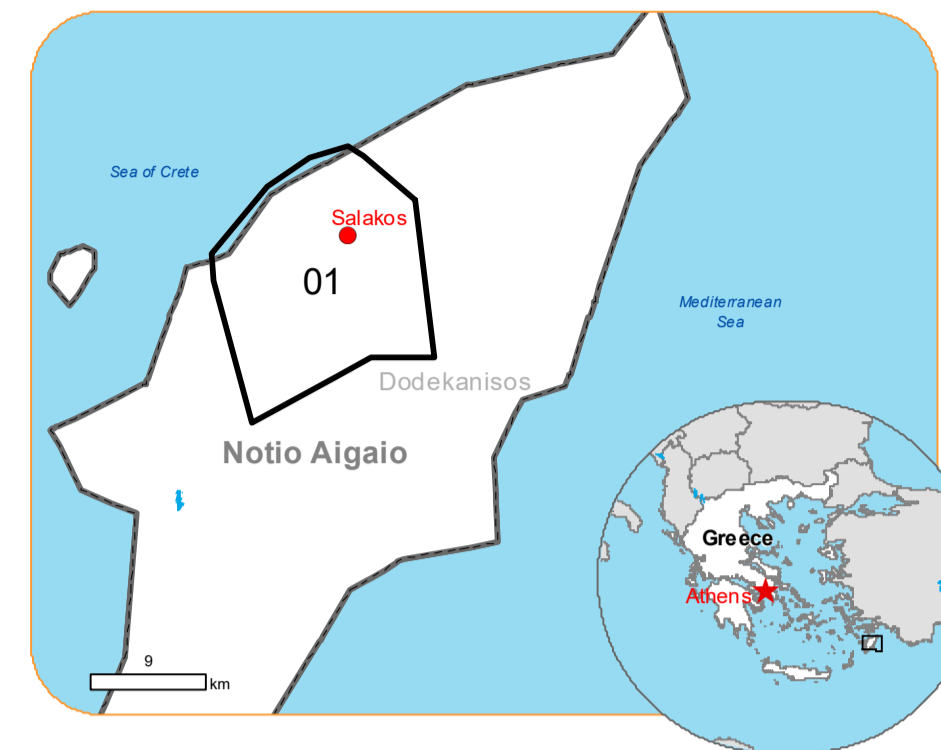




**Situation as of 21/07/2023 09:33 UTC**  
 Delineation MONIT01 - Overview map 01



Active Flames 8 No.  
 Burnt Area 1905.6 ha  
 Potentially affected population NA

Potentially Affected Transportations

Road  
 22.2 km

- Crisis Information**
  - Active Flames
  - Burnt area
  - Area of Interest
- General Information**
  - Placename
  - Built-Up Area
    - Residential
    - Non residential
    - School, university and research buildings
    - Hospital or institutional care buildings
- Hydrography**
  - Coastline
  - River
  - Stream
  - Lake
  - Reservoir
- Facilities**
  - Long-distance pipelines or lines
  - Local pipelines or lines
  - Mining or extraction site
  - Power plant
  - Sport and recreation constructions
  - Water or Aquatic infrastructure
- Transportation**
  - Main road
  - Local road
  - Track
  - Helipad

	Current		Forecast	
	21 July 09:33 UTC	22 July 12:00 UTC	22 July 12:00 UTC	23 July 12:00 UTC
Wind direction and speed	8 km/h	17 km/h	17 km/h	16 km/h
Temperature and relative Humidity	40° 34%	37° 30%	39° 24%	

Data retrieved from ECMWF on July 21, 10:12 UTC. Calculated at: 36°13'17.74"N, 27°54'35.345"E

**Event:**  
 A wildfire started in the afternoon of 18 July in a forest area of Rodos Island and is still ongoing. Residents of the villages of Eleousa, Salakanos and Dimilia were ordered to evacuate. According to the Hellenic Fire Service, 86 firefighters are currently operating in the area, assisted by 3 ground force groups, 28 vehicles, 3 water-bombing aircraft and 3 helicopters. Personnel and means of municipalities, regions, armed forces and groups of volunteers are assisting. Copernicus EMS Rapid Mapping is requested to provide an initial rough estimation, to support the monitoring and assessment of the extent of the wildfire and the damage caused.

**Data sources and analysis:**  
 Pre-event image: Sentinel-2A/B (2023) (acquired on 08/07/2023 at 08:46 UTC, resolution 10.0 m).  
 Post-event image: WorldView-2 © Maxar Technologies, Inc. (2023), (acquired on 21/07/2023 at 09:33 UTC, resolution 2.0 m). This image is used as background image.

All images are provided under COPERNICUS by the European Union and ESA, all rights reserved.

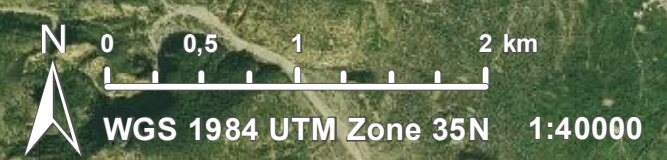
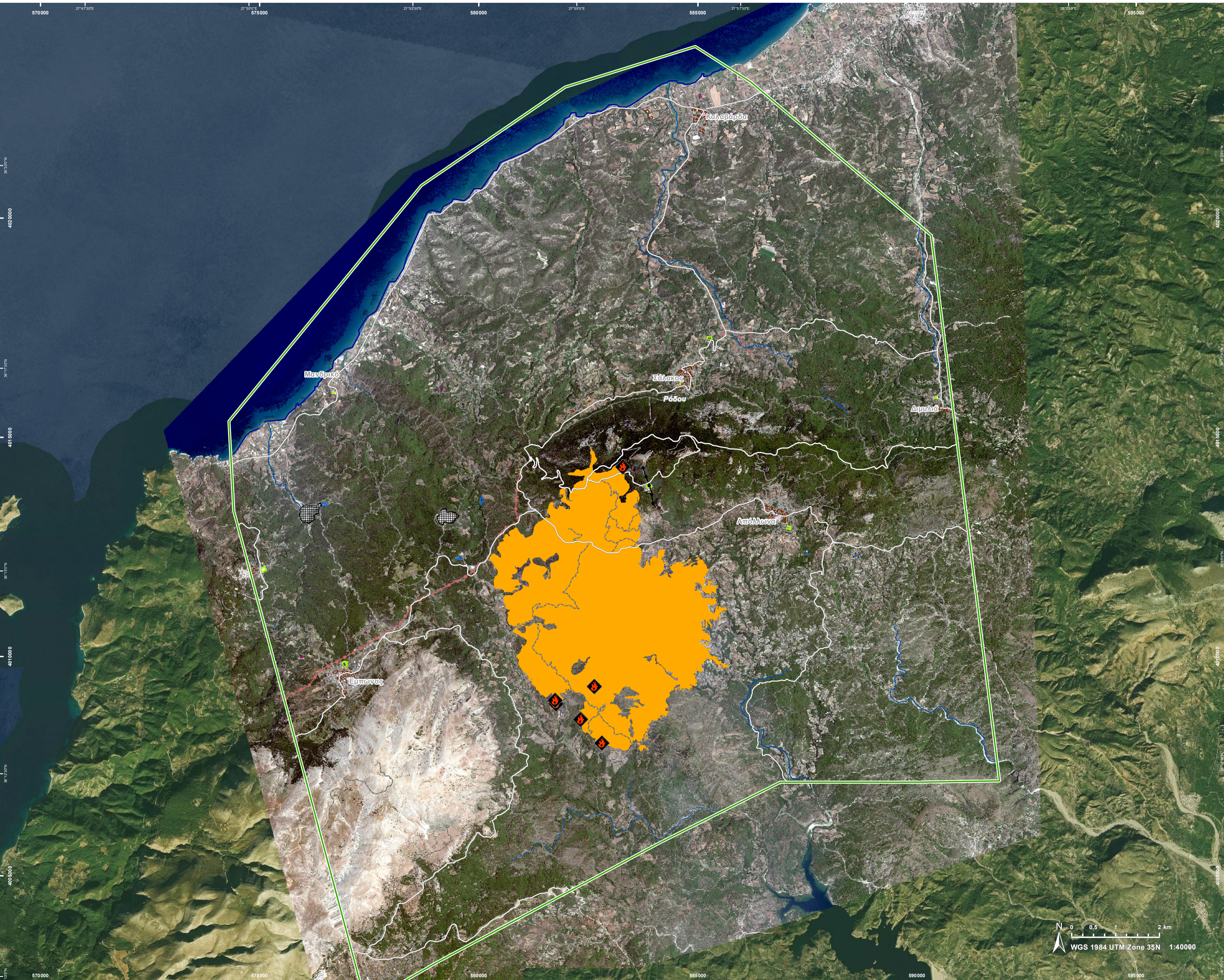
Base vector layers: OpenStreetMap © OpenStreetMap contributors (2023), Wikimapia.org, GeoNames 2015, Corine Land Cover (CLC) 2018, EuroBoundaryMap 2017 © EuroGeographics, Inset maps: JRC 2013, GISCO 2010 © EuroGeographics, Natural Earth 2012, CCM River DB © EUJRC2007, GeoNames 2015.

Population data: GHS Population Grid © European Commission, 2022  
[https://ghsl.jrc.ec.europa.eu/ghs\\_pop2022.php](https://ghsl.jrc.ec.europa.eu/ghs_pop2022.php)  
 Digital Elevation Model: COP-DEM-EEA-10-R product © DLR e.V. (2014-2018) and © Airbus Defence and Space GmbH (2020) provided under COPERNICUS by the European Union and ESA, all rights reserved.

The thematic layer has been derived from post-event satellite image by means of visual interpretation.

The current burnt area cumulates all burnt area extents from previous post-event products.

Map produced by ITHACA released by e-GEOS on the 23/07/2023.  
 Details on this activation and service conditions available through the QR code or at the link:  
<https://emergency.copernicus.eu/EMSR675>



Consequences within the AOI				
		Unit of measurement	Affected	Total in AOI
Burnt area		ha		1.905.6
Active Flames		No.		8
Estimated population		Number of inhabitants	NA	~ 3.700
Built-up	Residential Buildings	ha	0.0	21.7
	Wholesale and retail trade buildings	ha	0.0	0.2
	Industrial buildings	ha	0.0	3.6
	School, university and research buildings	ha	0.0	0.7
	Hospital or institutional care buildings	ha	0.0	0.1
	Cemetery	ha	0.0	1.4
Transportation	Helipad	ha	0.0	0.1
	Primary Road	km	0.0	0.2
	Secondary Road	km	5.3	125.2
	Local Road	km	0.0	90.7
	Cart Track	km	17.0	349.6
Facilities	Settling Basin	ha	0.0	0.4
	Constructions for mining or extraction	ha	0.0	27.0
	Power plant constructions	ha	0.0	1.4
	Sport and recreation constructions	ha	0.0	5.6
	Long-distance pipelines, communication and electricity lines	km	0.0	1.0
	Local pipelines and cables	km	0.0	9.1
Land use	Shrub and/or herbaceous vegetation association	ha	1.170.2	10.955.0
	Forests	ha	362.1	4.641.9
	Heterogeneous agricultural areas	ha	300.0	4.966.6
	Permanent crops	ha	73.3	2.726.4
	Arable land	ha	0.0	28.9
	Open spaces with little or no vegetation	ha	0.0	787.3
	Other	ha	0.0	1.325.4

**Disclaimer:**

Full disclaimer and other helpful information available in the online manual:

<https://emergency.copernicus.eu/mapping/ems/online-manual-rapid-mapping-products>

© European Union / Copernicus Emergency Management Service

**Data access:**

All data displayed on the map(s), as well as Land Use - Land Cover layer(s), are available in the Crisis Information Package and the Base Layer Package (for reference data).

The table above is available in editable format in the Crisis Information Package.

All products and data are also available for download on the portal.

Access to  
the portal



PROGRAMME OF THE  
EUROPEAN UNION

