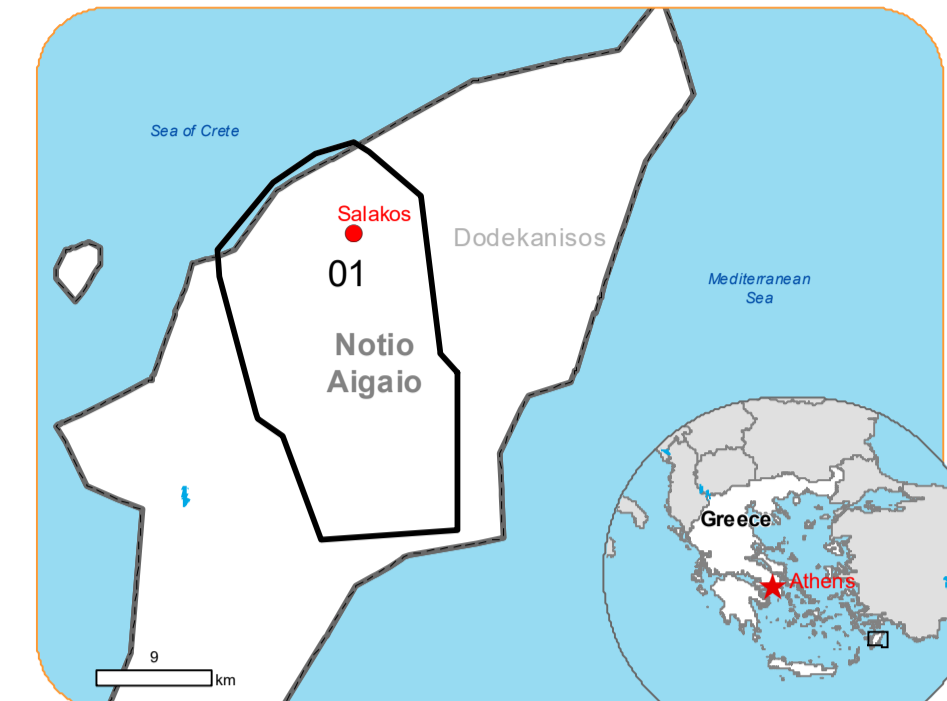




Situation as of 23/07/2023 09:12 UTC

Delineation MONIT03 - Overview map 01



Active Flames 48 No.  
 Fire Front 6.2 km  
 Burnt Area 9182 ha

Potentially affected population ~ 200

Potentially Affected Built-up and Transportations

Road 209.4 km  
 Built-up 7.7 ha

**Crisis Information**

Active Flames

Fire Fronts

Burnt area

**General Information**

Area of Interest

**Placenames**

Placename

**Built-Up Area**

Residential

Non residential

School, university and research buildings

Hospital or institutional care buildings

Unclassified

**Hydrography**

Coastline

River

Stream

Lake

Reservoir

**Facilities**

Long-distance pipelines or lines

Local pipelines or lines

Dam

Mining or extraction site

Power plant

Sport and recreation constructions

Water or Aquatic infrastructure

Dam

**Transportation**

Main road

Local road

Track

Helipad

	Current		Forecast	
	23 July 09:12 UTC	24 July 12:00 UTC	24 July 12:00 UTC	25 July 12:00 UTC
Wind direction and speed	19 km/h	28 km/h	28 km/h	15 km/h
Temperature and relative Humidity	41° 25%	37° 26%	32° 27%	

Data retrieved from ECMWF on July 23, 13:40 UTC. Calculated at: 36°7'33"N, 27°56'52"E.

**Event**  
 A wildfire started in the afternoon of 18 July in a forest area of Rodos Island and is still ongoing. Residents of the villages of Eleousa, Salakanos and Dimilia were ordered to evacuate. According to the Hellenic Fire Service, 86 firefighters are currently operating in the area, assisted by 3 ground force groups, 28 vehicles, 3 water-bombing aircraft and 3 helicopters. Personnel and means of municipalities, regions, armed forces and groups of volunteers are assisting. Copernicus EMS Rapid Mapping is requested to provide an initial rough estimation, to support the monitoring and assessment of the extent of the wildfire and the damage caused.

**Data sources and analysis:**  
 Pre-event image: Sentinel-2A/B (2023) (acquired on 08/07/2023 at 08:46 UTC, resolution 10.0 m).  
 Post-event image: GEOEYE © Maxar Technologies, Inc. (2023), (acquired on 23/07/2023 at 09:12 UTC, resolution 2 m). This image is used as background image.  
 All images are provided under COPERNICUS by the European Union and ESA, all rights reserved.

Base vector layers: OpenStreetMap © OpenStreetMap contributors (2023), Wikimapia.org, GeoNames 2015, Corine Land Cover (CLC) 2018, EuroBoundaryMap 2017 © EuroGeographics.  
 Inset maps: JRC 2013, GISCO 2010 © EuroGeographics, Natural Earth 2012, CCM River DB © EUJRC2007, GeoNames 2015.

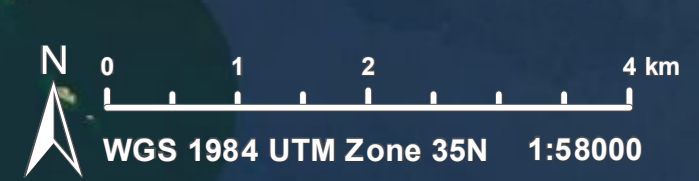
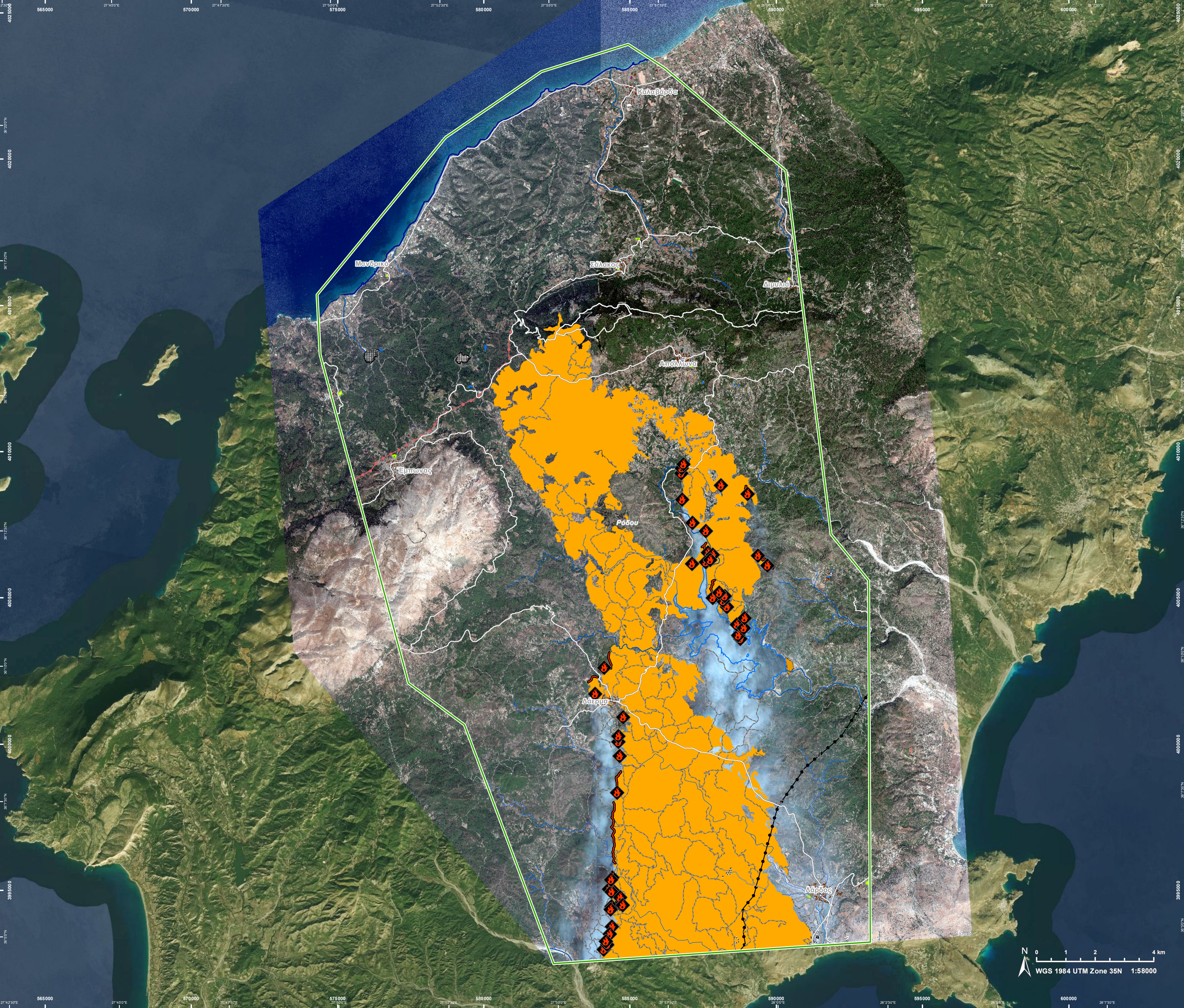
Population data: GHS Population Grid © European Commission, 2022 [https://ghsl.jrc.ec.europa.eu/ghs\\_pop2022.php](https://ghsl.jrc.ec.europa.eu/ghs_pop2022.php)  
 Digital Elevation Model: COP-DEM-EEA-10-R product © DLR e.V. (2014-2018) and Airbus Defence and Space GmbH (2020) provided under COPERNICUS by the European Union and ESA, all rights reserved.

The thematic layer has been derived from post-event satellite image by means of visual interpretation.

The current burnt area cumulates all burnt area extents from previous post-event products.

Map produced by ITHACA released by e-GEOS on the 23/07/2023.

Details on this activation and service conditions available through the QR code or at the link: <https://emergency.copernicus.eu/EMSR675>



Consequences within the AOI				
		Unit of measurement	Affected	Total in AOI
Burnt area		ha		9.182,5
Active Flames		No.		48
Fire Fronts		km		6,2
Estimated population		Number of inhabitants	~ 200	~ 5.100
Built-up	Residential Buildings	ha	2,3	36,6
	Wholesale and retail trade buildings	ha	0,0	0,2
	Industrial buildings	ha	0,0	3,7
	School, university and research buildings	ha	0,0	0,9
	Hospital or institutional care buildings	ha	0,0	0,1
	Cemetery	ha	0,1	1,3
	Unclassified	ha	5,3	7,4
Transportation	Helipad	ha	0,0	0,1
	Primary Road	km	0,0	1,5
	Secondary Road	km	18,8	157,3
	Local Road	km	6,5	141,6
	Cart Track	km	184,1	744,7
Facilities	Settling Basin	ha	0,0	0,4
	Dams	ha	0,0	8,9
	Constructions for mining or extraction	ha	0,0	27,4
	Power plant constructions	ha	0,0	1,4
	Sport and recreation constructions	ha	0,0	7,7
	Long-distance pipelines, communication and electricity lines	km	4,6	11,3
	Local pipelines and cables	km	0,0	9,1
	Dams	km	0,0	0,2
Land use	Shrub and/or herbaceous vegetation association	ha	6.845,7	23.043,5
	Forests	ha	1.030,0	5.716,9
	Heterogeneous agricultural areas	ha	953,4	7.125,0
	Permanent crops	ha	337,2	4.076,7
	Other	ha	14,4	1.889,3
	Open spaces with little or no vegetation	ha	1,8	876,1
	Arable land	ha	0,0	28,9

**Disclaimer:**

Full disclaimer and other helpful information available in the online manual:

<https://emergency.copernicus.eu/mapping/ems/online-manual-rapid-mapping-products>

© European Union / Copernicus Emergency Management Service

**Data access:**

All data displayed on the map(s), as well as the Physiography and Land Use - Land Cover layers, are available in the Crisis Information Package and the Base Layer Package (for reference data).

The table above is available in editable format in the Crisis Information Package.

All products and data are also available for download on the portal.

Access to  
the portal



PROGRAMME OF THE  
EUROPEAN UNION

