



**Situation as of 24/07/2023 08:54 UTC**  
 Delineation MONIT04 - Overview map 01



Active Flames 42 No.  
 Fire Front 9.1 km  
 Burnt Area 13312 ha

Potentially affected population ~ 550

Potentially Affected Built-up and Transportations

Road 335.8 km  
 Built-up 17.1 ha

**Crisis Information**

- Active Flames
- Fire Fronts
- Burnt area

**General Information**

- Area of Interest
- Detail map
- Not Analysed

**Placenames**

- Placename

**Built-Up Area**

- Residential
- Non residential
- School, university and research buildings
- Hospital or institutional care buildings
- Military
- Unclassified

**Hydrography**

- Coastline
- River

**Facilities**

- Stream
- Lake
- Reservoir
- Long-distance pipelines or lines
- Local pipelines or lines
- Dam
- Mining or extraction site
- Power plant
- Sport and recreation constructions
- Dump Site
- Water or Aquatic infrastructure
- Dam

**Transportation**

- Main road
- Local road
- Track
- Airfield runway
- Helipad

	Forecast		
	24 July 08:54 UTC	25 July 08:54 UTC	26 July 08:54 UTC
Wind direction and speed	27 km/h	16 km/h	4 km/h
Temperature and relative Humidity	37° 27%	37° 30%	40° 33%

Data retrieved from ECMWF on July 24, 16:10 UTC. Calculated at: 36°44'0"N, 27°56'2"E.

**Event**  
 A wildfire started in the afternoon of 18 July in a forest area of Rodos Island and is still ongoing. Residents of the villages of Eleousa, Salakanos and Dimilia were ordered to evacuate. According to the Hellenic Fire Service, 86 firefighters are currently operating in the area, assisted by 3 ground force groups, 28 vehicles, 3 water-bombing aircraft and 3 helicopters. Personnel and means of municipalities, regions, armed forces and groups of volunteers are assisting. Copernicus EMS Rapid Mapping is requested to provide an initial rough estimation, to support the monitoring and assessment of the extent of the wildfire and the damage caused.

**Data sources and analysis:**  
 Pre-event image: Sentinel-2A/B (2023) (acquired on 08/07/2023 at 08:46 UTC, resolution 10.0 m).  
 Post-event image: WorldView-3 © Maxar Technologies, Inc. (2023), (acquired on 24/07/2023 at 08:54 UTC, resolution 2.0 m). This image is used as background image.  
 All images are provided under COPERNICUS by the European Union and ESA, all rights reserved.

Base vector layers: OpenStreetMap © OpenStreetMap contributors (2023), Wikimapia.org, GeoNames 2015, Corine Land Cover (CLC) 2018, EuroBoundaryMap 2017 © EuroGeographics, Inset maps: JRC 2013, GISC0 2010 © EuroGeographics, Natural Earth 2012, CCM River DB © EUJRC2007, GeoNames 2015.

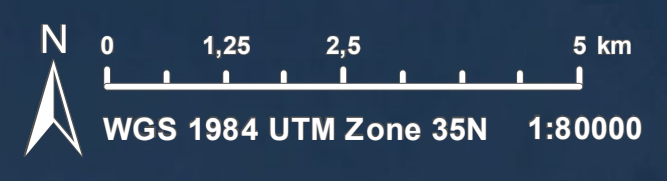
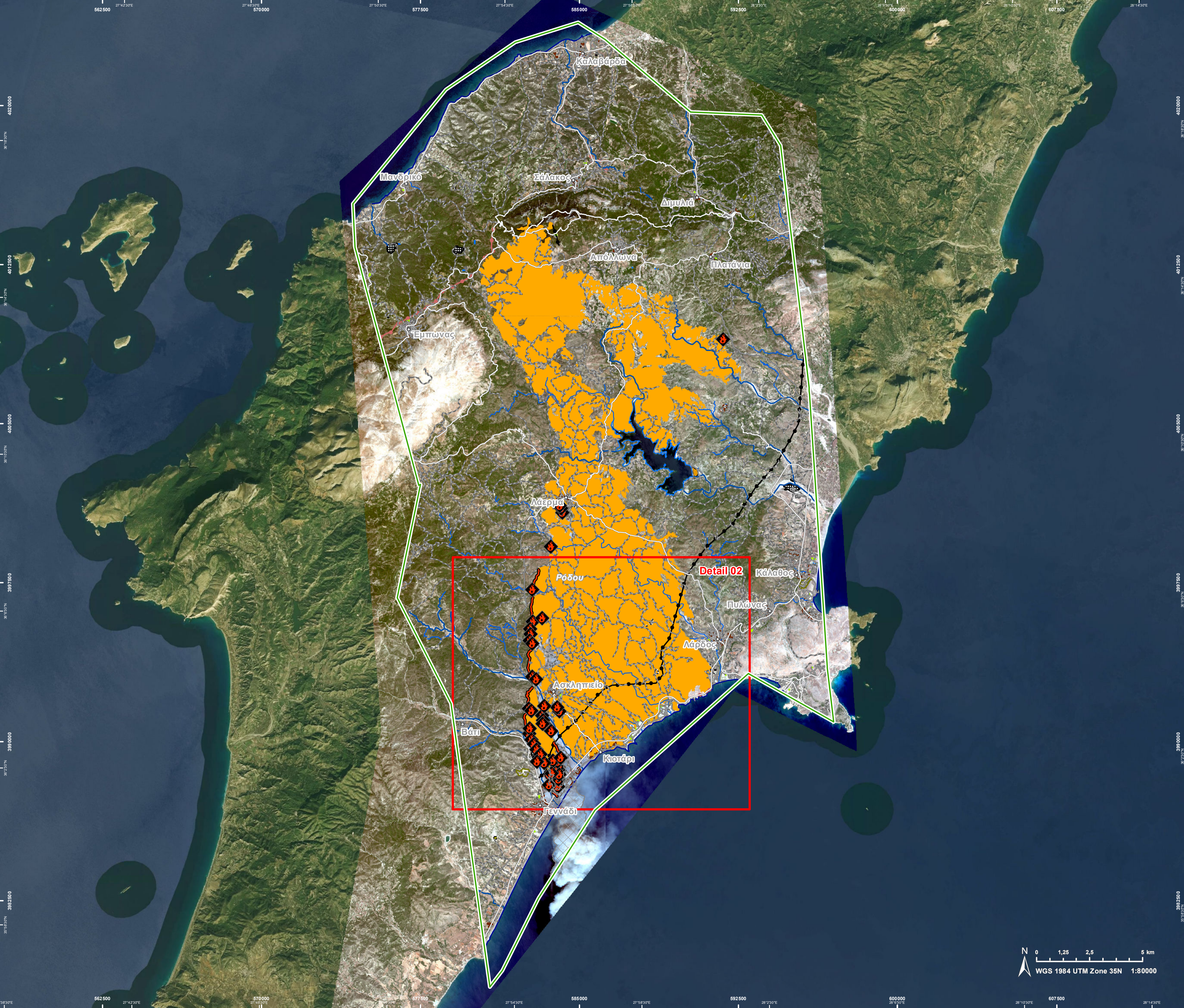
Population data: GHS Population Grid © European Commission, 2022 [https://ghsl.jrc.ec.europa.eu/ghs\\_pop2022.php](https://ghsl.jrc.ec.europa.eu/ghs_pop2022.php)  
 Digital Elevation Model: COP-DEM-EEA-10-R product © DLR e.V. (2014-2018) and © Airbus Defence and Space GmbH (2020) provided under COPERNICUS by the European Union and ESA, all rights reserved.

The thematic layer has been derived from post-event satellite image by means of visual interpretation.

The current burnt area cumulates all burnt area extents from previous post-event products.

Map produced by ITHACA released by e-GEOS on the 24/07/2023.

Details on this activation and service conditions available through the QR code or at the link: <https://emergency.copernicus.eu/EMSR675>



562500 27°42'30"E 570000 27°54'00"E 577500 27°58'30"E 585000 27°58'30"E 592500 28°10'00"E 600000 28°10'00"E 607500 28°14'30"E

4020000 38°12'30"N 4012500 38°12'30"N 4005000 38°12'30"N 3997500 38°12'30"N 3990000 38°12'30"N 3882500 38°12'30"N 387500 38°12'30"N 3867500 38°12'30"N 3860000 38°12'30"N 3852500 38°12'30"N 3845000 38°12'30"N 3837500 38°12'30"N 3830000 38°12'30"N 3822500 38°12'30"N 3815000 38°12'30"N 3807500 38°12'30"N 3800000 38°12'30"N

562500 27°42'30"E 570000 27°46'00"E 577500 27°50'30"E 585000 27°50'30"E 592500 28°02'00"E 600000 28°02'00"E 607500 28°14'30"E

**EMSR675 - AOI01**  
**Wildfire in Greece**  
**SALAKOS**

**Situation as of 24/07/2023 08:54 UTC**  
Delineation MONIT04 - Detail map 02



**Active Flames 37 No.**  
(88.1% of total in AOI)  
**Fire Front 9.1 km**  
(100% of total in AOI)  
**Burnt Area 6225.6 ha**  
(47% of total in AOI)

**Potentially affected population ~400**  
(73% of total affected)

**Potentially Affected Built-up and Transportations**

<b>Road</b> 190.3 km (56.7% of total affected)	<b>Built-up</b> 14 ha (81.9% of total affected)
--	---

- Crisis Information**
- Active Flames
  - Fire Fronts
  - Burnt area
- General Information**
- Area of Interest
  - Not Analysed
- Placenames**
- Placename
- Built-Up Area**
- Residential
  - Non residential
  - School, university and research buildings
  - Military
  - Unclassified
- Hydrography**
- Coastline
  - River
  - Stream
  - Lake
- Facilities**
- Long-distance pipelines or lines
  - Local pipelines or lines
  - Mining or extraction site
  - Sport and recreation constructions
- Transportation**
- Main road
  - Local road
  - Track

**Event:**  
A wildfire started in the afternoon of 18 July in a forest area of Rodos Island and is still ongoing. Residents of the villages of Eleousa, Salakanos and Dimilia were ordered to evacuate. According to the Hellenic Fire Service, 86 firefighters are currently operating in the area, assisted by 3 ground force groups, 28 vehicles, 3 water-bombing aircraft and 3 helicopters. Personnel and means of municipalities, regions, armed forces and groups of volunteers are assisting. Copernicus EMS Rapid Mapping is requested to provide an initial rough estimation, to support the monitoring and assessment of the extent of the wildfire and the damage caused.

**Data sources and analysis:**  
Pre-event image: Sentinel-2A/B (2023) (acquired on 08/07/2023 at 08:46 UTC, resolution 10.0 m).  
Post-event image: WorldView-3 © Maxar Technologies, Inc. (2023), (acquired on 24/07/2023 at 08:54 UTC, resolution 2 m). This image is used as background image.  
All images are provided under COPERNICUS by the European Union and ESA, all rights reserved.

Base vector layers: OpenStreetMap © OpenStreetMap contributors (2023), Wikimapia.org, GeoNames 2015, Corine Land Cover (CLC) 2018, EuroBoundaryMap 2017 © EuroGeographics.  
Inset maps: JRC 2013, GISCO 2010 © EuroGeographics, Natural Earth 2012, CCM River DB © EUJRC2007, GeoNames 2015.

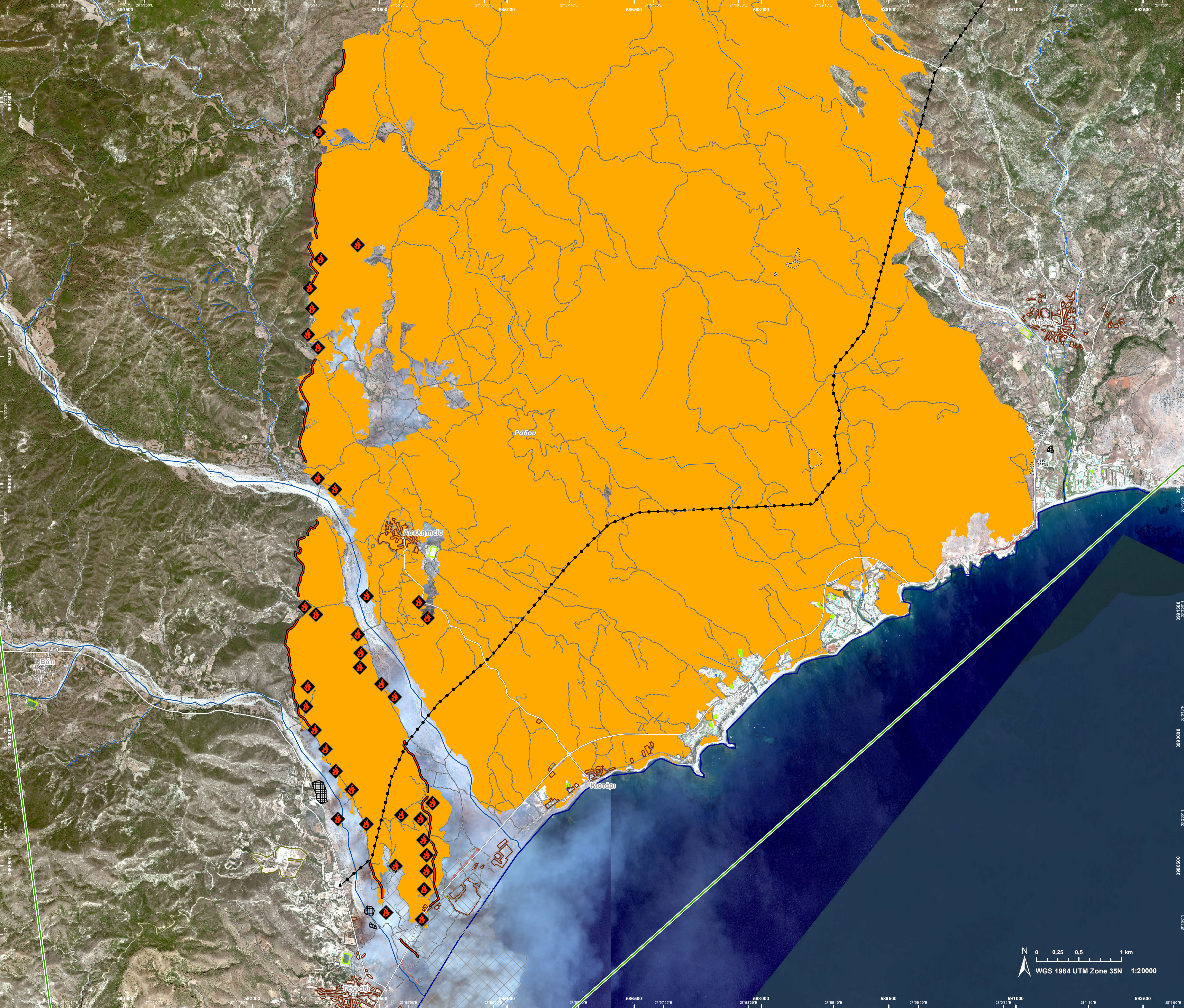
Population data: GHS Population Grid © European Commission, 2022 [https://ghsl.jrc.ec.europa.eu/ghs\\_pop2022.php](https://ghsl.jrc.ec.europa.eu/ghs_pop2022.php)  
Digital Elevation Model: COP-DEM-EEA-10-R product © DLR e.V. (2014-2018) and © Airbus Defence and Space GmbH (2020) provided under COPERNICUS by the European Union and ESA, all rights reserved.

The thematic layer has been derived from post-event satellite image by means of visual interpretation.

The current burnt area cumulates all burnt area extents from previous post-event products.

Map produced by ITHACA released by e-GEOS on the 24/07/2023.

Details on this activation and service conditions available through the QR code or at the link: <https://emergency.copernicus.eu/EMSR675>



Consequences within the AOI				
		Unit of measurement	Affected	Total in AOI
Burnt area		ha		13.312,4
Active Flames		No.		42
Fire Fronts		km		9,1
Estimated population		Number of inhabitants	~ 550	~ 9.800
Built-up	Residential Buildings	ha	11,4	89,9
	Office buildings	ha	0,0	0,5
	Wholesale and retail trade buildings	ha	0,2	0,8
	Industrial buildings	ha	0,0	11,3
	School, university and research buildings	ha	0,0	1,5
	Hospital or institutional care buildings	ha	0,0	0,1
	Military	ha	0,0	44,6
	Cemetery	ha	0,2	2,1
	Unclassified	ha	5,3	7,4
Transportation	Helipad	ha	0,0	0,1
	Airfield runways	km	0,0	0,2
	Primary Road	km	0,0	17,0
	Secondary Road	km	27,6	209,8
	Local Road	km	16,8	278,5
	Cart Track	km	291,4	1.123,3
Facilities	Settling Basin	ha	0,0	0,4
	Breakwater	ha	0,0	0,6
	Dams	ha	0,0	8,9
	Constructions for mining or extraction	ha	0,0	50,7
	Power plant constructions	ha	0,0	1,4
	Sport and recreation constructions	ha	0,1	14,2
	Long-distance pipelines, communication and electricity lines	km	11,7	26,7
	Local pipelines and cables	km	0,0	11,0
	Dams	km	0,0	0,2
Land use	Shrub and/or herbaceous vegetation association	ha	9.543,6	33.671,6
	Heterogeneous agricultural areas	ha	1.901,3	10.595,9
	Forests	ha	1.342,0	7.277,6
	Permanent crops	ha	445,9	5.668,4
	Arable land	ha	38,5	646,2
	Other	ha	34,0	4.650,9
	Open spaces with little or no vegetation	ha	7,1	1.465,8

**Disclaimer:**

Full disclaimer and other helpful information available in the online manual:

<https://emergency.copernicus.eu/mapping/ems/online-manual-rapid-mapping-products>

© European Union / Copernicus Emergency Management Service

**Data access:**

All data displayed on the map(s), as well as the Physiography and Land Use - Land Cover layers, are available in the Crisis Information Package and the Base Layer Package (for reference data).

The table above is available in editable format in the Crisis Information Package.

All products and data are also available for download on the portal.

Access to the portal



PROGRAMME OF THE EUROPEAN UNION

