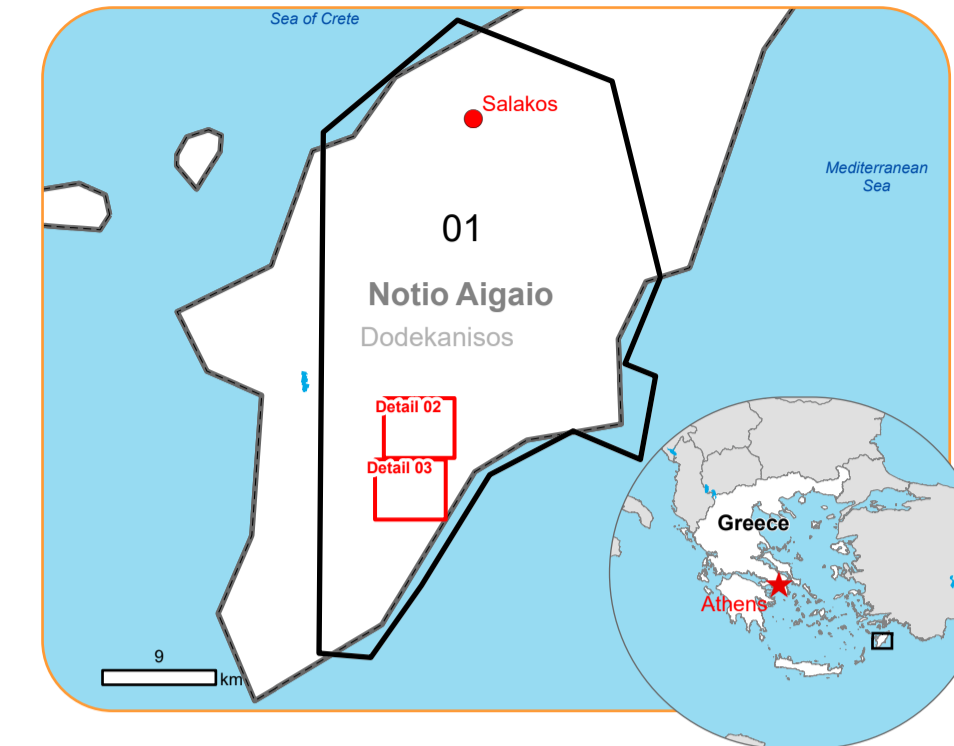




Situation as of 26/07/2023 08:24 UTC
 Delineation MONIT06 - Overview map 01



Active Flames 16 No.
 Fire Front 0.5 km
 Burnt Area 16582.7 ha

Potentially affected population ~ 750

Potentially Affected Built-up and Transportations

Road 400.8 km
 Built-up 39.9 ha

- Crisis Information**
- Active Flames
 - Fire Fronts
 - Burnt area
 - Area of Interest
 - Detail map
- General Information**
- Placenames
 - Built-Up Area
 - Residential
 - Non residential
 - School, university and research buildings
 - Hospital or institutional care buildings
 - Military
 - Unclassified
- Hydrography**
- Coastline
 - River
 - Stream
 - Lake
 - Reservoir
- Facilities**
- Long-distance pipelines or lines
 - Local pipelines or lines
 - Dam
 - Mining or extraction site
 - Power plant
 - Sport and recreation constructions
 - Dump Site
 - Water or Aquatic infrastructure
 - Dam
- Transportation**
- Main road
 - Local road

	Current		Forecast	
	26 July 08:24 UTC	27 July 08:24 UTC	27 July 08:24 UTC	28 July 08:24 UTC
Wind direction and speed	5 km/h	10 km/h	10 km/h	19 km/h
Temperature and relative Humidity	35° 39%	31° 61%	31° 43%	31° 43%

Data retrieved from ECMWF on July 26, 08:24 UTC. Calculated at: 36°44'7"N, 27°53'52"E.

Event
 A wildfire started in the afternoon of 18 July in a forest area of Rodos Island and is still ongoing. Residents of the villages of Eleousa, Salakanos and Dimilia were ordered to evacuate. According to the Hellenic Fire Service, 86 firefighters are currently operating in the area, assisted by 3 ground force groups, 28 vehicles, 3 water-bombing aircraft and 3 helicopters. Personnel and means of municipalities, regions, armed forces and groups of volunteers are assisting. Copernicus EMS Rapid Mapping is requested to provide an initial rough estimation, to support the monitoring and assessment of the extent of the wildfire and the damage caused.

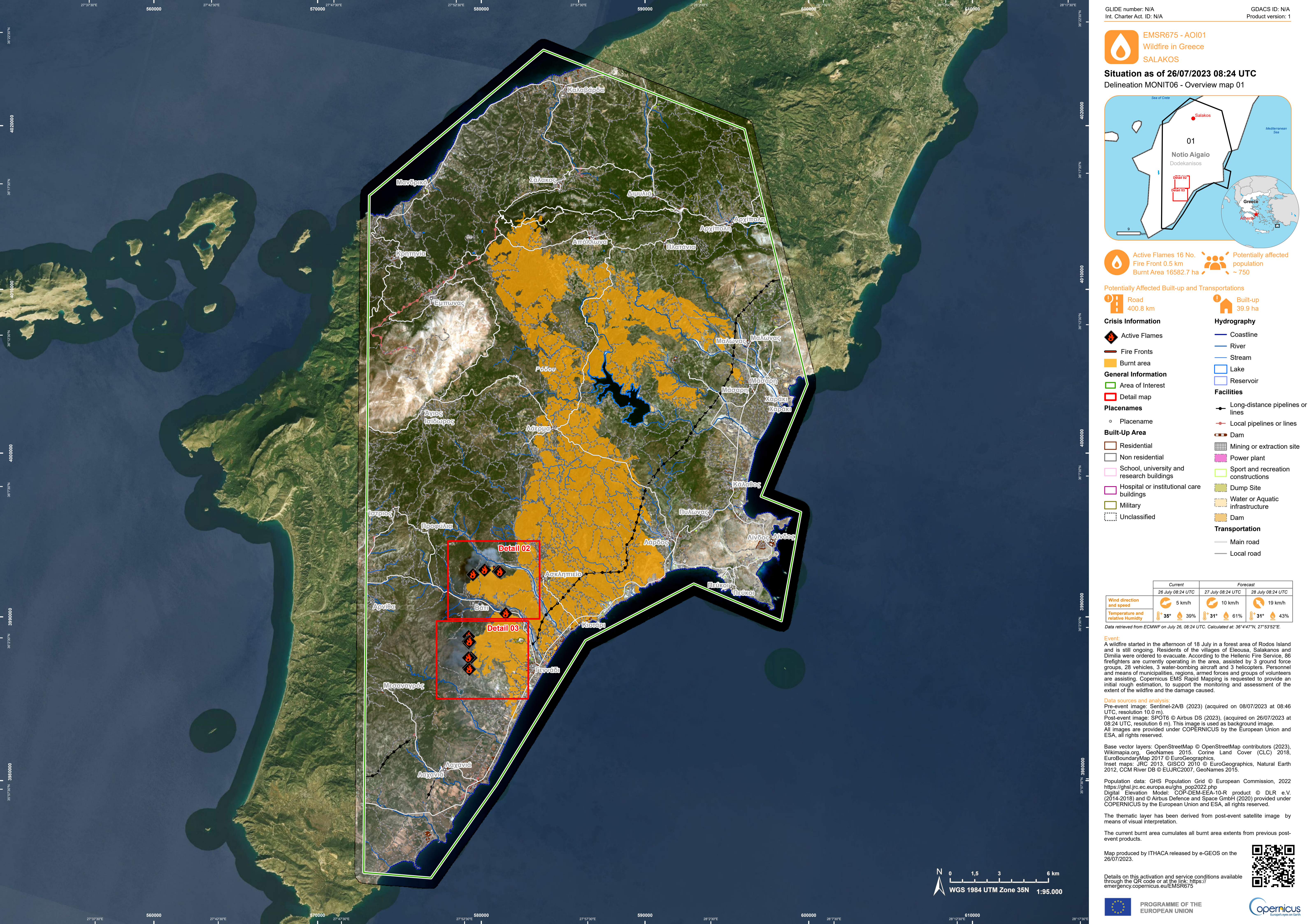
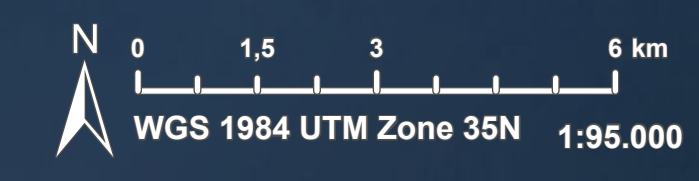
Data sources and analysis:
 Pre-event image: Sentinel-2A/B (2023) (acquired on 08/07/2023 at 08:46 UTC, resolution 10.0 m).
 Post-event image: SPOT6 © Airbus DS (2023), (acquired on 26/07/2023 at 08:24 UTC, resolution 6 m). This image is used as background image.
 All images are provided under COPERNICUS by the European Union and ESA, all rights reserved.

Base vector layers: OpenStreetMap © OpenStreetMap contributors (2023), Wikimapia.org, GeoNames 2015, Corine Land Cover (CLC) 2018, EuroBoundaryMap 2017 © EuroGeographics, Inset maps: JRC 2013, GISCO 2010 © EuroGeographics, Natural Earth 2012, CCM River DB © EUJRC2007, GeoNames 2015.
 Population data: GHS Population Grid © European Commission, 2022 https://ghsl.jrc.ec.europa.eu/ghs_pop2022.php
 Digital Elevation Model: COP-DEM-EEA-10-R product © DLR e.V. (2014-2018) and © Airbus Defence and Space GmbH (2020) provided under COPERNICUS by the European Union and ESA, all rights reserved.

The thematic layer has been derived from post-event satellite image by means of visual interpretation.
 The current burnt area cumulates all burnt area extents from previous post-event products.

Map produced by ITHACA released by e-GEOS on the 26/07/2023.

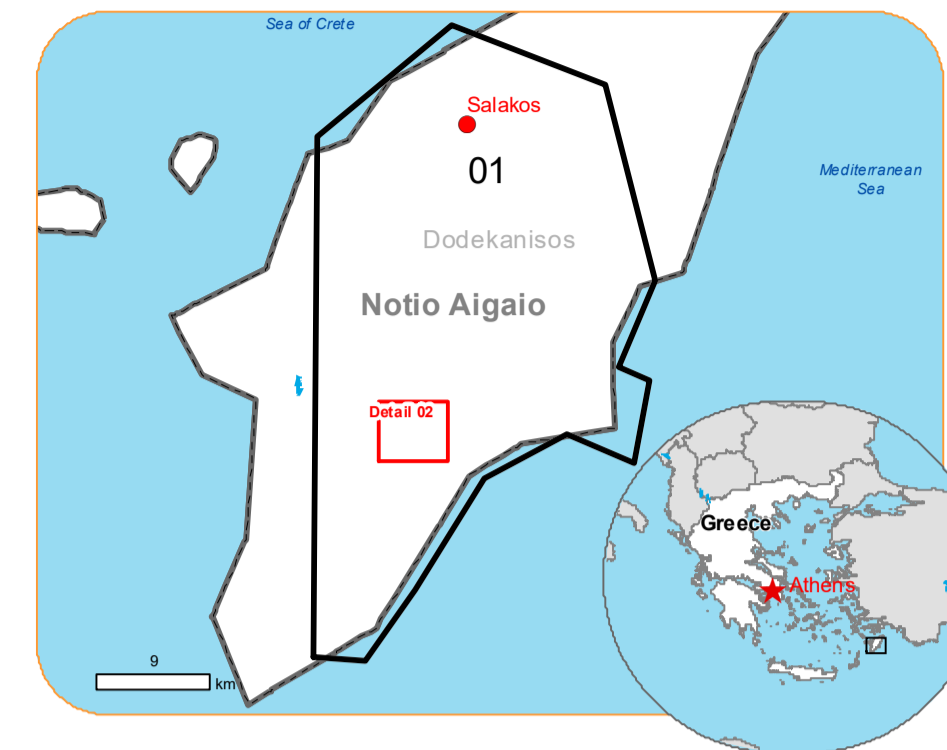
Details on this activation and service conditions available through the QR code or at the link: <https://emergency.copernicus.eu/EMSR675>



EMSR675 - AOI01
 Wildfire in Greece
 SALAKOS

Situation as of 26/07/2023 08:24 UTC

Delineation MONIT06 - Detail map 02



Active Flames 11 No.
 (69% of total in AOI)
 Fire Front 0.2 km
 (40% of total in AOI)
 Burnt Area 1006.99 ha
 (6% of total in AOI)

Potentially affected population ~ 70
 (9% of total affected)

Potentially Affected Built-up and Transportations

Road 13.6 km
 (3% of total in AOI)

Built-up 4.2 ha
 (11% of total in AOI)

Crisis Information

- Active Flames
- Fire Fronts
- Burnt area

Transportation

- Main road
- Local road
- Track

Placenames

- Placename

Built-Up Area

- Residential
- Non residential

Hydrography

- River
- Stream
- Sport and recreation constructions

	Current		Forecast	
	26 July 08:24 UTC	27 July 08:24 UTC	28 July 08:24 UTC	28 July 08:24 UTC
Wind direction and speed	5 km/h	10 km/h	19 km/h	19 km/h
Temperature and relative Humidity	35° 39%	31° 61%	31° 43%	31° 43%

Data retrieved from ECMWF on July 26, 08:24 UTC. Calculated at: 36°44'7"N, 27°53'52"E.

Event
 A wildfire started in the afternoon of 18 July in a forest area of Rodos Island and is still ongoing. Residents of the villages of Eleousa, Salakanos and Dimilia were ordered to evacuate. According to the Hellenic Fire Service, 86 firefighters are currently operating in the area, assisted by 3 ground force groups, 28 vehicles, 3 water-bombing aircraft and 3 helicopters. Personnel and means of municipalities, regions, armed forces and groups of volunteers are assisting. Copernicus EMS Rapid Mapping is requested to provide an initial rough estimation, to support the monitoring and assessment of the extent of the wildfire and the damage caused.

Data sources and analysis:
 Pre-event image: Sentinel-2A/B (2023) (acquired on 08/07/2023 at 08:46 UTC, resolution 10.0 m).
 Post-event image: SPOT6 © Airbus DS (2023), (acquired on 26/07/2023 at 08:24 UTC, resolution 6 m). This image is used as background image.
 All images are provided under COPERNICUS by the European Union and ESA, all rights reserved.

Base vector layers: OpenStreetMap © OpenStreetMap contributors (2023), Wikimapia.org, GeoNames 2015, Corine Land Cover (CLC) 2018, EuroBoundaryMap 2017 © EuroGeographics, Inset maps: JRC 2013, GISCO 2010 © EuroGeographics, Natural Earth 2012, CCM River DB © EUJRC2007, GeoNames 2015.

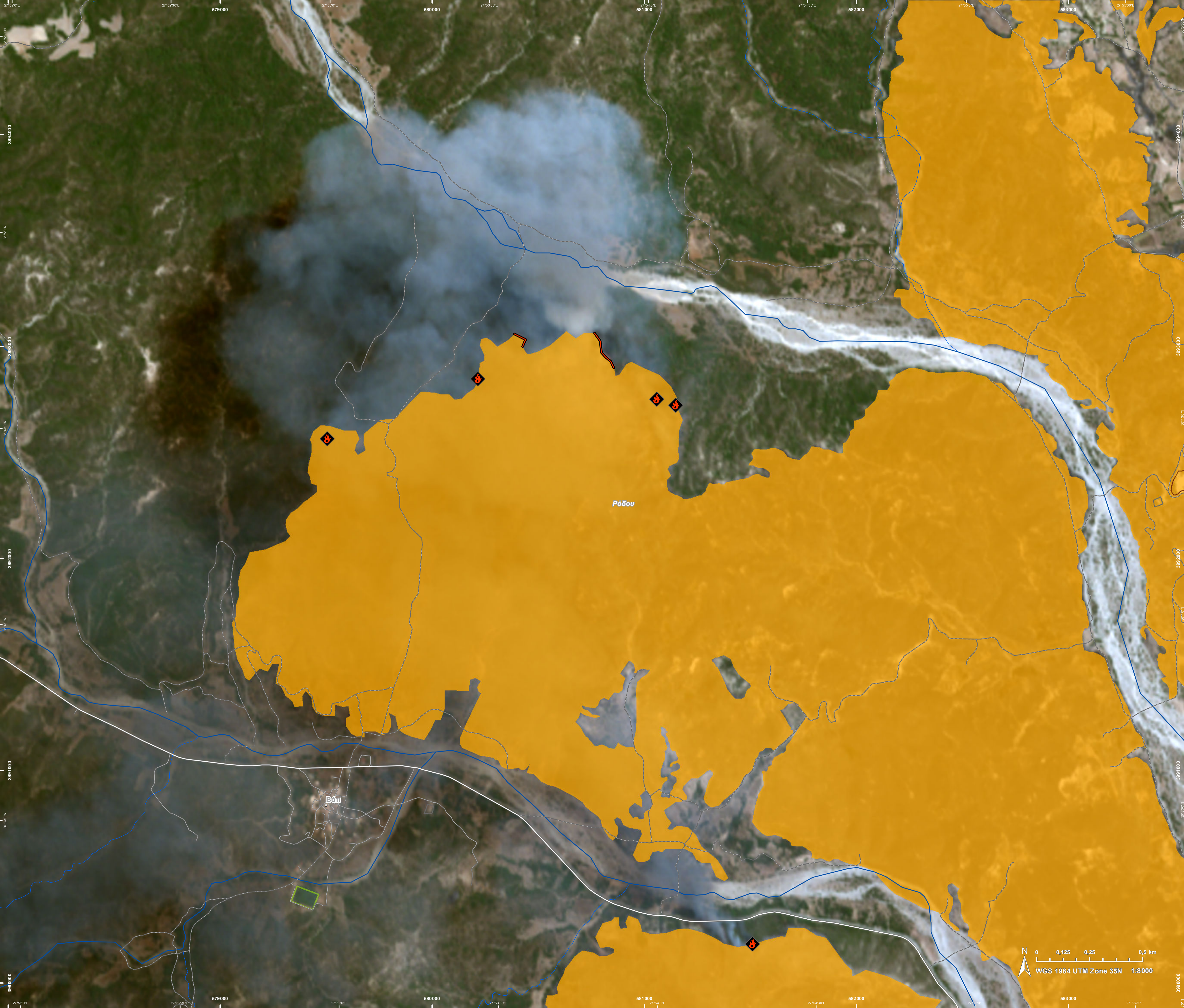
Population data: GHS Population Grid © European Commission, 2022 https://ghsl.jrc.ec.europa.eu/ghs_pop2022.php
 Digital Elevation Model: COP-DEM-EEA-10-R product © DLR e.V. (2014-2018) and © Airbus Defence and Space GmbH (2020) provided under COPERNICUS by the European Union and ESA, all rights reserved.

The thematic layer has been derived from post-event satellite image by means of visual interpretation.

The current burnt area cumulates all burnt area extents from previous post-event products.

Map produced by ITHACA released by e-GEOS on the 26/07/2023.

Details on this activation and service conditions available through the QR code or at the link: <https://emergency.copernicus.eu/EMSR675>



EMSR675 - AOI01
 Wildfire in Greece
 SALAKOS

Situation as of 26/07/2023 08:24 UTC
 Delineation MONIT06 - Detail map 03



Active Flames 5 No.
 (31% of total in AOI)
 Fire Front 0.3 km
 (60% of total in AOI)
 Burnt Area 1089.6 ha
 (7% of total in AOI)

Potentially affected population ~ 10
 (1% of total in AOI)

Potentially Affected Built-up and Transportations

Road 17.4 km
 (4% of total in AOI)

Built-up 0.8 ha
 (2% of total in AOI)

Crisis Information

- Active Flames
- Fire Fronts
- Burnt area

Transportation

- Main road
- Local road
- Track

Built-Up Area

- Residential
- Military

Hydrography

- River
- Stream
- Lake

Facilities

- Mining or extraction site
- Sport and recreation constructions
- Dump Site

	Current		Forecast	
	26 July 08:24 UTC	27 July 08:24 UTC	27 July 08:24 UTC	28 July 08:24 UTC
Wind direction and speed	5 km/h	10 km/h	10 km/h	19 km/h
Temperature and relative Humidity	35° 39%	31° 61%	31° 61%	31° 43%

Data retrieved from ECMWF on July 26, 08:24 UTC. Calculated at: 36°44'7"N, 27°53'52"E.

Event
 A wildfire started in the afternoon of 18 July in a forest area of Rodos Island and is still ongoing. Residents of the villages of Eleoussa, Salakanos and Dimilia were ordered to evacuate. According to the Hellenic Fire Service, 86 firefighters are currently operating in the area, assisted by 3 ground force groups, 28 vehicles, 3 water-bombing aircraft and 3 helicopters. Personnel and means of municipalities, regions, armed forces and groups of volunteers are assisting. Copernicus EMS Rapid Mapping is requested to provide an initial rough estimation, to support the monitoring and assessment of the extent of the wildfire and the damage caused.

Data sources and analysis:
 Pre-event image: Sentinel-2A/B (2023) (acquired on 08/07/2023 at 08:46 UTC, resolution 10.0 m).
 Post-event image: SPOT6 © Airbus DS (2023), (acquired on 26/07/2023 at 08:24 UTC, resolution 6 m). This image is used as background image.
 All images are provided under COPERNICUS by the European Union and ESA, all rights reserved.

Base vector layers: OpenStreetMap © OpenStreetMap contributors (2023), Wikimapia.org, GeoNames 2015, Corine Land Cover (CLC) 2018, EuroBoundaryMap 2017 © EuroGeographics.
 Inset maps: JRC 2013, GISCO 2010 © EuroGeographics, Natural Earth 2012, CCM River DB © EUJRC2007, GeoNames 2015.

Population data: GHS Population Grid © European Commission, 2022 https://ghsl.jrc.ec.europa.eu/ghs_pop2022.php
 Digital Elevation Model: COP-DEM-EEA-10-R product © DLR e.V. (2014-2018) and © Airbus Defence and Space GmbH (2020) provided under COPERNICUS by the European Union and ESA, all rights reserved.

The thematic layer has been derived from post-event satellite image by means of visual interpretation.

The current burnt area cumulates all burnt area extents from previous post-event products.

Map produced by ITHACA released by e-GEOS on the 26/07/2023.

Details on this activation and service conditions available through the QR code or at the link: <https://emergency.copernicus.eu/EMSR675>



Consequences within the AOI				
		Unit of measurement	Affected	Total in AOI
Burnt area		ha		16 582.7
Active Flames		No.		16
Fire Fronts		km		0.5
Estimated population		Number of inhabitants	~ 750	~ 14 000
Built-up	Residential Buildings	ha	21.0	154.0
	Office buildings	ha	0.0	0.5
	Wholesale and retail trade buildings	ha	0.2	1.0
	Industrial buildings	ha	0.0	13.9
	School, university and research buildings	ha	0.0	1.8
	Hospital or institutional care buildings	ha	0.0	0.1
	Military	ha	4.1	44.6
	Cemetery	ha	0.2	2.9
	Unclassified	ha	14.4	16.8
Transportation	Helipad	ha	0.0	0.1
	Airfield runways	km	0.0	0.2
	Primary Road	km	0.0	28.7
	Secondary Road	km	30.4	287.0
	Local Road	km	24.5	394.1
	Cart Track	km	346.0	1 569.2
Facilities	Settling Basin	ha	0.0	1.3
	Breakwater	ha	0.0	0.7
	Dams	ha	0.0	8.9
	Constructions for mining or extraction	ha	0.0	50.7
	Power plant constructions	ha	0.0	2.8
	Sport and recreation constructions	ha	0.2	22.4
	Other civil engineering works not elsewhere classified	ha	0.0	1.5
	Long-distance pipelines, communication and electricity lines	km	12.6	35.2
	Local pipelines and cables	km	0.5	21.3
	Dams	km	0.0	0.2
Land use	Shrub and/or herbaceous vegetation association	ha	12 107.3	49 057.8
	Heterogeneous agricultural areas	ha	2 297.0	15 278.0
	Forests	ha	1 378.4	8 969.3
	Permanent crops	ha	608.5	7 478.4
	Arable land	ha	145.4	1 906.3
	Other	ha	34.4	7 914.1
	Open spaces with little or no vegetation	ha	11.7	2 036.3
	Pastures	ha	0.0	112.9

Disclaimer:

Full disclaimer and other helpful information available in the online manual:
<https://emergency.copernicus.eu/mapping/ems/online-manual-rapid-mapping-products>
 © European Union / Copernicus Emergency Management Service

Data access:

All data displayed on the map(s), as well as the Physiography and Land Use - Land Cover layers, are available in the Crisis Information Package and the Base Layer Package (for reference data). The table above is available in editable format in the Crisis Information Package. All products and data are also available for download on the portal.

