

Active Flames 78 No.  
Burnt Area 17505.6 ha

Potentially affected population ~ 750

Potentially Affected Built-up and Transportations

Road 413.1 km  
Built-up 35.9 ha

Crisis Information

Active Flames  
Burnt area

General Information

Area of Interest  
Detail map

Placenames

Placename

Built-Up Area

Residential  
Non residential  
School, university and research buildings  
Hospital or institutional care buildings  
Military  
Unclassified

Hydrography

Coastline  
River  
Stream  
Lake  
Reservoir

Facilities

Long-distance pipelines or lines  
Local pipelines or lines  
Dam  
Mining or extraction site  
Power plant  
Sport and recreation constructions  
Dump Site  
Water or Aquatic infrastructure  
Dam  
Main road

	Current		Forecast	
	27 July 09:11 UTC	28 July 09:11	29 July 09:11 UTC	29 July 09:11 UTC
Wind direction and speed	13 km/h	13 km/h	21 km/h	21 km/h
Temperature and relative Humidity	32°  59%	31°  40%	30°  42%	30°  42%

Data retrieved from ECMWF on July 27, 09:11 UTC. Calculated at: 36°5'55"N, 27°54'16"E

**Event**  
A wildfire started in the afternoon of 18 July in a forest area of Rodos Island and is still ongoing. Residents of the villages of Eleousa, Salakanos and Dimilia were ordered to evacuate. According to the Hellenic Fire Service, 86 firefighters are currently operating in the area, assisted by 3 ground force groups, 28 vehicles, 3 water-bombing aircraft and 3 helicopters. Personnel and means of municipalities, regions, armed forces and groups of volunteers are assisting. Copernicus EMS Rapid Mapping is requested to provide an initial rough estimation, to support the monitoring and assessment of the extent of the wildfire and the damage caused.

**Data sources and analysis:**  
Pre-event image: Sentinel-2A/B (2023) (acquired on 08/07/2023 at 08:46 UTC, resolution 10.0 m).  
Post-event image: WorldView-2 © Maxar Technologies, Inc. (2023), (acquired on 27/07/2023 at 09:11 UTC, resolution 2 m). This image is used as background image.  
All images are provided under COPERNICUS by the European Union and ESA, all rights reserved.

Base vector layers: OpenStreetMap © OpenStreetMap contributors (2023), Wikimapia.org, GeoNames 2015, Corine Land Cover (CLC) 2018, EuroBoundaryMap 2017 © EuroGeographics.  
Inset maps: JRC 2013, GISCO 2010 © EuroGeographics, Natural Earth 2012, CCM River DB © EUJRC2007, GeoNames 2015.

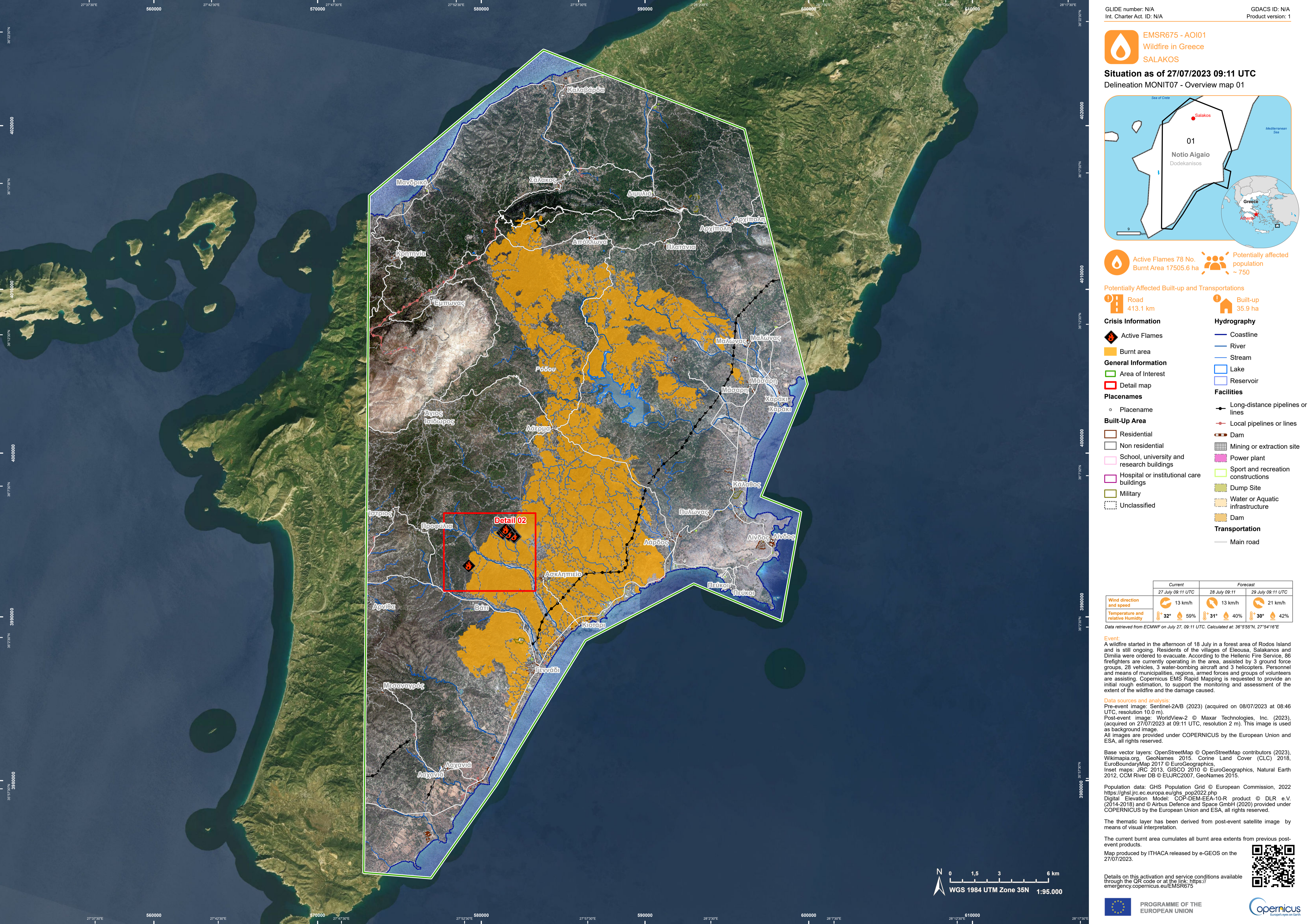
Population data: GHS Population Grid © European Commission, 2022 [https://ghsl.jrc.ec.europa.eu/ghs\\_pop2022.php](https://ghsl.jrc.ec.europa.eu/ghs_pop2022.php)  
Digital Elevation Model: COP-DEM-EEA-10-R product © DLR e.V. (2014-2018) and © Airbus Defence and Space GmbH (2020) provided under COPERNICUS by the European Union and ESA, all rights reserved.

The thematic layer has been derived from post-event satellite image by means of visual interpretation.

The current burnt area cumulates all burnt area extents from previous post-event products.

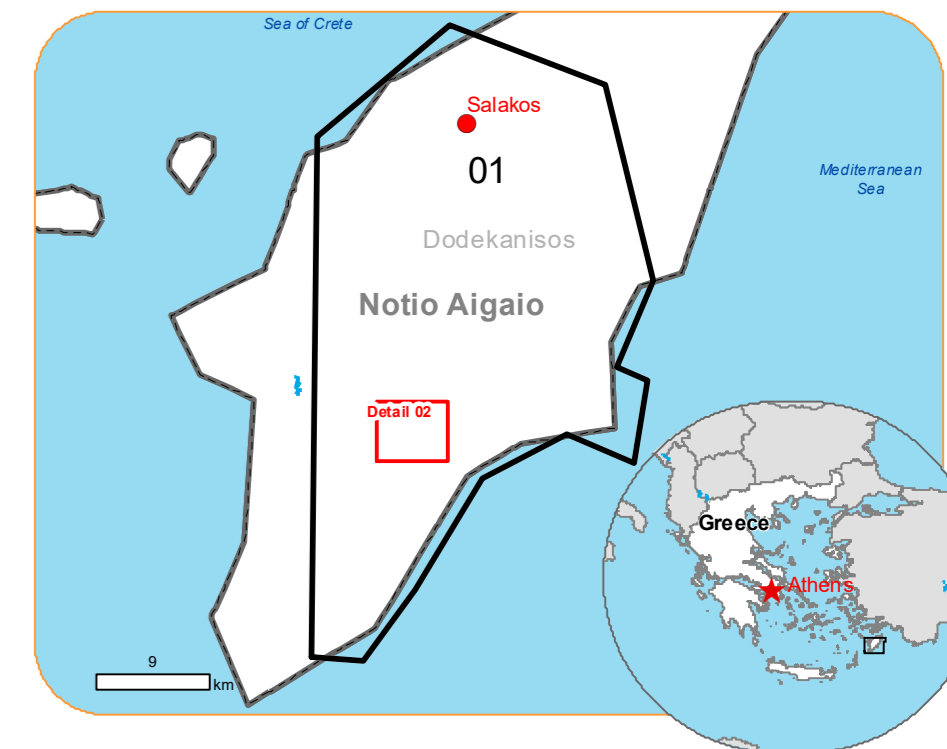
Map produced by ITHACA released by e-GEOS on the 27/07/2023.

Details on this activation and service conditions available through the QR code or at the link: <https://emergency.copernicus.eu/EMSR675>





**Situation as of 27/07/2023 09:11 UTC**  
 Delineation MONIT07 - Detail map 02



**Active Flames 68 No.**  
 (87% of total in AOI)  
**Burnt Area 1366.4 ha**  
 (8% of total in AOI)

**Potentially affected population NA**

**Potentially Affected Transportations**

**Road**  
 19.5 km  
 (5% of total in AOI)

**Crisis Information**

**Active Flames**

**Burnt area**

**Hydrography**

**River**  
**Stream**

**Transportation**

**Local road**  
**Track**

	Current		Forecast	
	27 July 09:11 UTC	28 July 09:11 UTC	28 July 09:11 UTC	29 July 09:11 UTC
<b>Wind direction and speed</b>	13 km/h	13 km/h	13 km/h	21 km/h
<b>Temperature and relative Humidity</b>	32°  59%	31°  40%	30°  42%	

Data retrieved from ECMWF on July 27, 09:11 UTC. Calculated at: 36°5'55"N, 27°54'16"E

**Event**  
 A wildfire started in the afternoon of 18 July in a forest area of Rodos Island and is still ongoing. Residents of the villages of Eleousa, Salakanos and Dimilia were ordered to evacuate. According to the Hellenic Fire Service, 86 firefighters are currently operating in the area, assisted by 3 ground force groups, 28 vehicles, 3 water-bombing aircraft and 3 helicopters. Personnel and means of municipalities, regions, armed forces and groups of volunteers are assisting. Copernicus EMS Rapid Mapping is requested to provide an initial rough estimation, to support the monitoring and assessment of the extent of the wildfire and the damage caused.

**Data sources and analysis:**  
 Pre-event image: Sentinel-2A/B (2023) (acquired on 08/07/2023 at 08:46 UTC, resolution 10.0 m).  
 Post-event image: WorldView-2 © Maxar Technologies, Inc. (2023), (acquired on 27/07/2023 at 09:11 UTC, resolution 2 m). This image is used as background image.  
 All images are provided under COPERNICUS by the European Union and ESA, all rights reserved.

Base vector layers: OpenStreetMap © OpenStreetMap contributors (2023), Wikimapia.org, GeoNames 2015, Corine Land Cover (CLC) 2018, EuroBoundaryMap 2017 © EuroGeographics.  
 Inset maps: JRC 2013, GISCO 2010 © EuroGeographics, Natural Earth 2012, CCM River DB © EUJRC2007, GeoNames 2015.

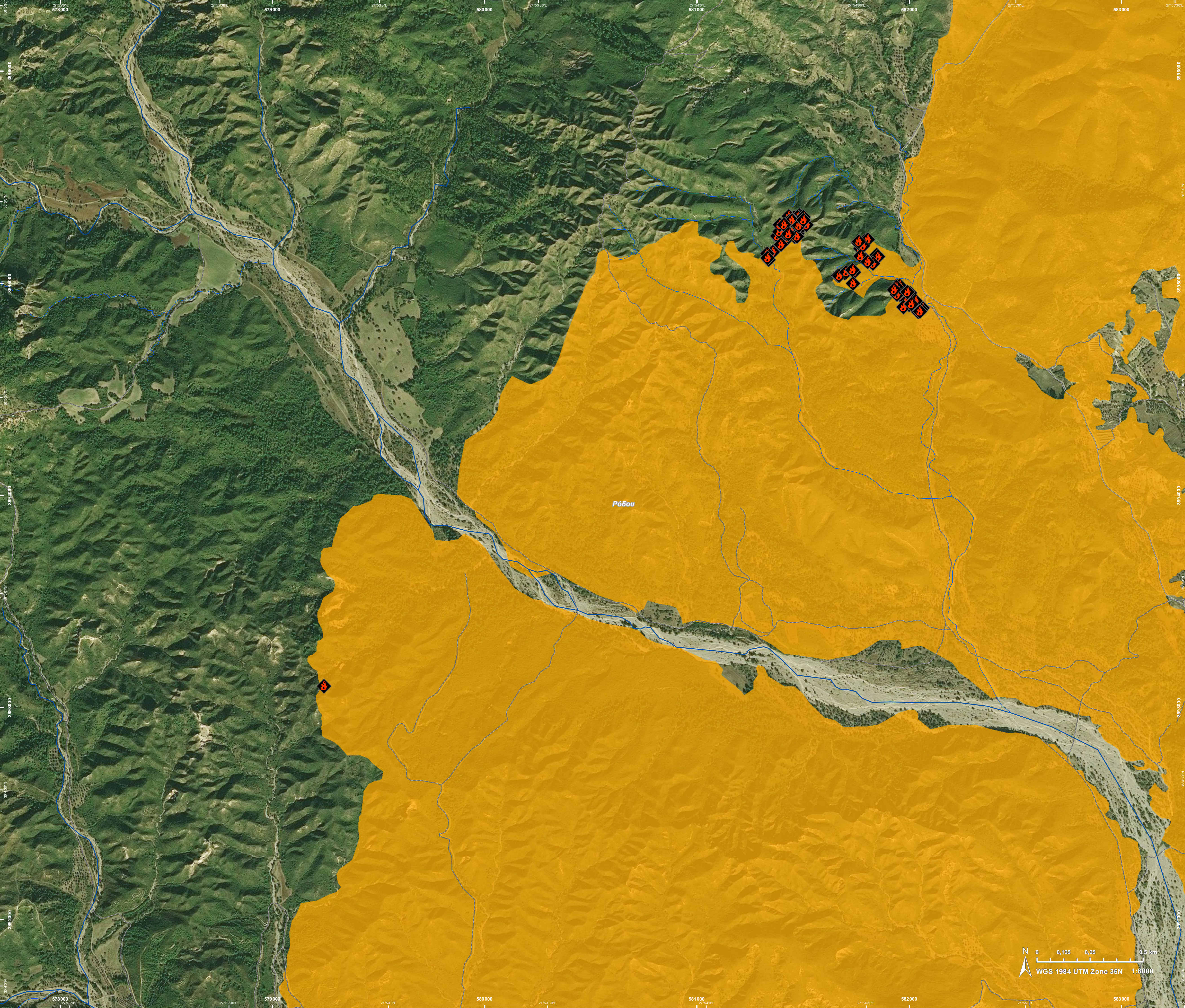
Population data: GHS Population Grid © European Commission, 2022 [https://ghsl.jrc.ec.europa.eu/ghs\\_pop2022.php](https://ghsl.jrc.ec.europa.eu/ghs_pop2022.php)  
 Digital Elevation Model: COP-DEM-EEA-10-R product © DLR e.V. (2014-2018) and © Airbus Defence and Space GmbH (2020) provided under COPERNICUS by the European Union and ESA, all rights reserved.

The thematic layer has been derived from post-event satellite image by means of visual interpretation.

The current burnt area cumulates all burnt area extents from previous post-event products.

Map produced by ITHACA released by e-GEOS on the 27/07/2023.

Details on this activation and service conditions available through the QR code or at the link: <https://emergency.copernicus.eu/EMSR675>



WGS 1984 UTM Zone 35N 1:8000

Consequences within the AOI				
		Unit of measurement	Affected	Total in AOI
Burnt area		ha		17.505,6
Active Flames		No.		78
Estimated population		Number of inhabitants	~ 750	~ 14.000
Built-up	Residential Buildings	ha	12,5	154,0
	Office buildings	ha	0,0	0,5
	Wholesale and retail trade buildings	ha	0,2	1,0
	Industrial buildings	ha	0,0	13,9
	School, university and research buildings	ha	0,0	1,8
	Hospital or institutional care buildings	ha	0,0	0,1
	Military	ha	9,2	44,6
	Cemetery	ha	0,2	2,9
	Unclassified	ha	13,8	16,8
Transportation	Helipad	ha	0,0	0,1
	Airfield runways	km	0,0	0,2
	Primary Road	km	0,0	28,7
	Secondary Road	km	30,8	287,0
	Local Road	km	24,7	394,1
	Cart Track	km	357,6	1.569,2
Facilities	Settling Basin	ha	0,0	1,3
	Breakwater	ha	0,0	0,7
	Dams	ha	0,0	8,9
	Constructions for mining or extraction	ha	0,0	50,7
	Power plant constructions	ha	0,0	2,8
	Sport and recreation constructions	ha	0,1	22,4
	Other civil engineering works not elsewhere classified	ha	0,0	1,5
	Long-distance pipelines, communication and electricity lines	km	12,6	35,2
	Local pipelines and cables	km	0,5	21,3
	Dams	km	0,0	0,2
Land use	Shrub and/or herbaceous vegetation association	ha	12.818,9	49.057,8
	Heterogeneous agricultural areas	ha	2.369,9	15.278,0
	Forests	ha	1.427,9	8.969,3
	Permanent crops	ha	694,0	7.478,4
	Arable land	ha	142,3	1.906,3
	Other	ha	34,4	7.914,1
	Open spaces with little or no vegetation	ha	18,3	2.036,3
	Pastures	ha	0,0	112,9

**Disclaimer:**

Full disclaimer and other helpful information available in the online manual:

<https://emergency.copernicus.eu/mapping/ems/online-manual-rapid-mapping-products>

© European Union / Copernicus Emergency Management Service

**Data access:**

All data displayed on the map(s), as well as the Physiography and Land Use - Land Cover layers, are available in the Crisis Information Package and the Base Layer Package (for reference data).

The table above is available in editable format in the Crisis Information Package.

All products and data are also available for download on the portal.

Access to the portal



PROGRAMME OF THE EUROPEAN UNION

