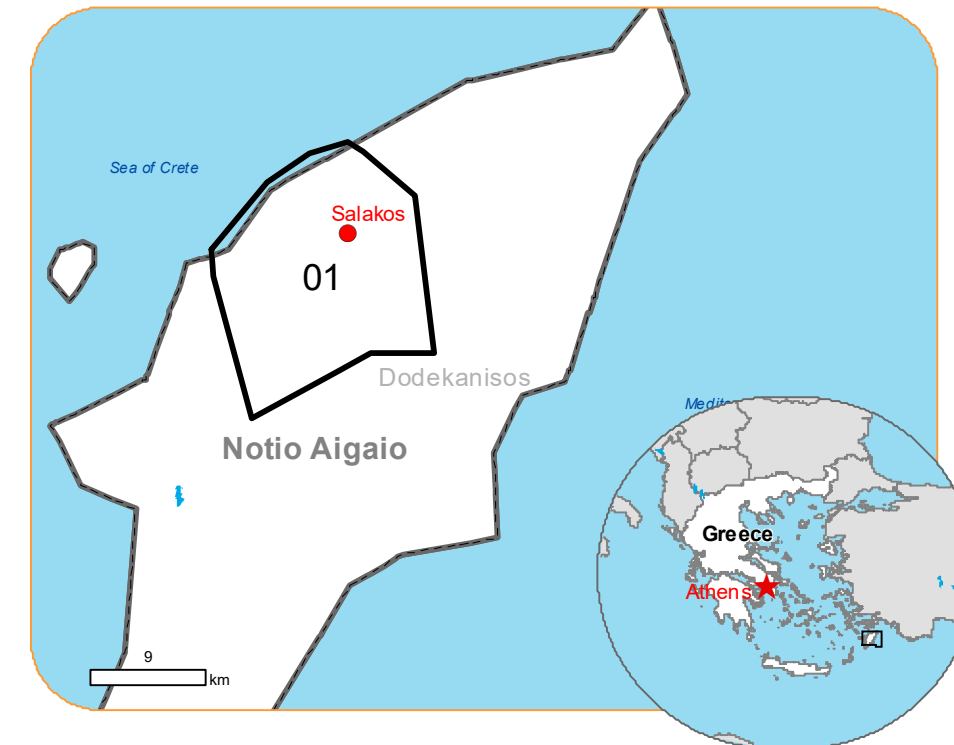


**EMSR675 - AOI01**  
Wildfire in Greece  
SALAKOS

Situation as of 20/07/2023 08:46 UTC  
Delineation - Overview map 01



Observed Event  
Active Flames 8 No.  
Fire Front 0,1 km  
Burnt Area 1703.3 ha

Potentially affected population  
0

Potentially Affected Built-up and Transportations

Road  
17.5 km

- Crisis information**
- Active Flames
  - Fire Fronts
  - Burnt area
- General Information**
- Area of Interest
  - Placenames
  - Built-Up Area
  - Hydrography
- Facilities**
- Long-distance pipelines or lines
  - Local pipelines or lines
  - Mining or extraction site
  - Power plant
  - Sport and recreation constructions
  - Water or Aquatic infrastructure
  - Transportation

	Current	Forecast	
	20 July 08:44 UTC	21 July 12:00 UTC	22 July 12:00 UTC
Wind direction and speed	8 km/h	20 km/h	8 km/h
Temperature and relative Humidity	35° 41%	38° 20%	34° 70%

**Event:**  
A wildfire started in the afternoon of 18 July in a forest area of Rodos Island and is still ongoing. Residents of the villages of Eleousa, Salakanos and Dimilia were ordered to evacuate. According to the Hellenic Fire Service, 86 firefighters are currently operating in the area, assisted by 3 ground force groups, 28 vehicles, 3 water-bombing aircraft and 3 helicopters. Personnel and means of municipalities, regions, armed forces and groups of volunteers are assisting. Copernicus EMS Rapid Mapping is requested to provide an initial rough estimation, to support the monitoring and assessment of the extent of the wildfire and the damage caused.

**Data sources and analysis:**  
Pre-event image: Sentinel-2A/B (2023) (acquired on 08/07/2023 at 08:46 UTC, resolution 10.0 m)  
Post-event image: Pléiades-1A/B © CNES (2023), distributed by Airbus DS (acquired on 20/07/2023 at 08:46 UTC, resolution 2 m). All images are provided under COPERNICUS by the European Union and ESA, all rights reserved.

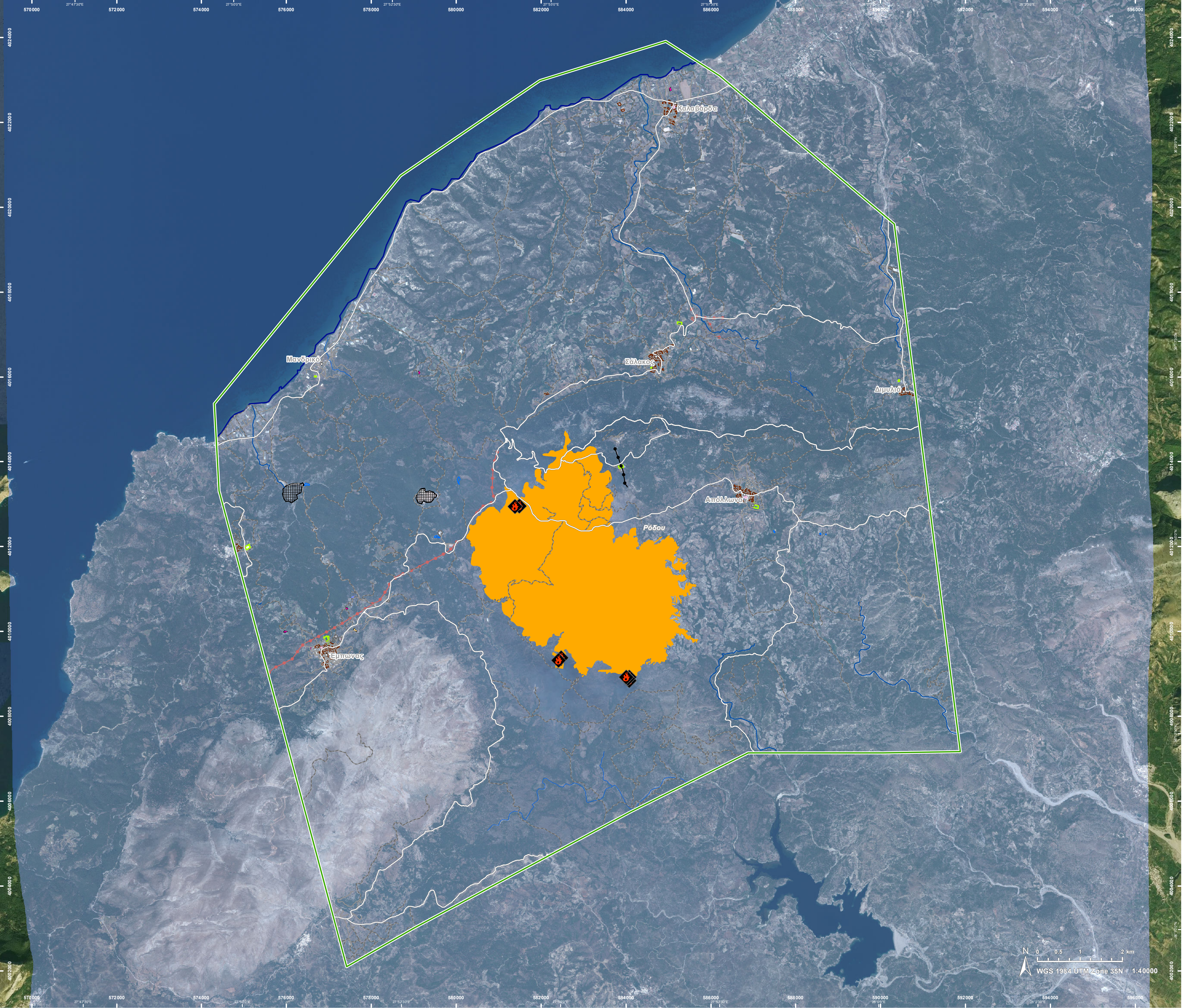
Base vector layers: OpenStreetMap © OpenStreetMap contributors (2023), Wikimapia.org, GeoNames 2015, Corine Land Cover (CLC) 2018, EuroBoundaryMap 2017 © EuroGeographics.  
Inset maps: JRC 2013, GISCO 2010 © EuroGeographics, Natural Earth 2012, CCM River DB © EUJRC2007, GeoNames 2015.

Population data: GHS Population Grid © European Commission, 2022  
https://ghsl.jrc.ec.europa.eu/ghs\_pop2022.php  
Digital Elevation Model: COP-DEM-EEA-10-R product © DLR e.V. (2014-2018) and © Airbus Defence and Space GmbH (2020) provided under COPERNICUS by the European Union and ESA, all rights reserved.

The thematic layer has been derived from post-event satellite image by means of visual interpretation.

Map produced by ITHACA released by e-GEOS on the 20/07/2023.

Details on this activation and service conditions available through the QR code or at the link:  
<https://emergency.copernicus.eu/EMSR675>



Consequences within the AOI				
		Unit of measurement	Affected	Total in AOI
Burnt area		ha		1 703.3
Active Flames		No.		8
Fire Fronts		km		0.1
Estimated population	Number of inhabitants		0	~ 3 700
Built-up	Residential Buildings	ha	0.0	21.7
	Wholesale and retail trade buildings	ha	0.0	0.2
	Industrial buildings	ha	0.0	3.6
	School, university and research buildings	ha	0.0	0.7
	Hospital or institutional care buildings	ha	0.0	0.1
	Cemetery	ha	0.0	1.4
Transportation	Helipad	ha	0.0	0.1
	Primary Road	km	0.0	0.2
	Secondary Road	km	5.8	125.2
	Local Road	km	0.0	90.7
	Cart Track	km	11.7	349.6
Facilities	Settling Basin	ha	0.0	0.4
	Constructions for mining or extraction	ha	0.0	27.0
	Power plant constructions	ha	0.0	1.4
	Sport and recreation constructions	ha	0.0	5.6
	Long-distance pipelines, communication and electricity lines	km	0.0	1.0
	Local pipelines and cables	km	0.0	9.1
Land use	Shrub and/or herbaceous vegetation association	ha	1 397.0	17 804.1
	Forests	ha	1 146.5	12 636.6
	Heterogeneous agricultural areas	ha	779.7	13 883.7
	Permanent crops	ha	83.5	2 726.4
	Other	ha	0.0	1 873.6
	Arable land	ha	0.0	28.9
	Open spaces with little or no vegetation	ha	0.0	787.3

**Disclaimer:**

Full disclaimer and other helpful information available in the online manual:  
<https://emergency.copernicus.eu/mapping/ems/online-manual-rapid-mapping-products>  
 © European Union / Copernicus Emergency Management Service

**Data access:**

All data displayed on the map(s), as well as the Physiography and Land Use - Land Cover layers, are available in the Crisis Information Package and the Base Layer Package (for reference data). The table above is available in editable format in the Crisis Information Package. All products and data are also available for download on the portal.

Access to  
the portal

