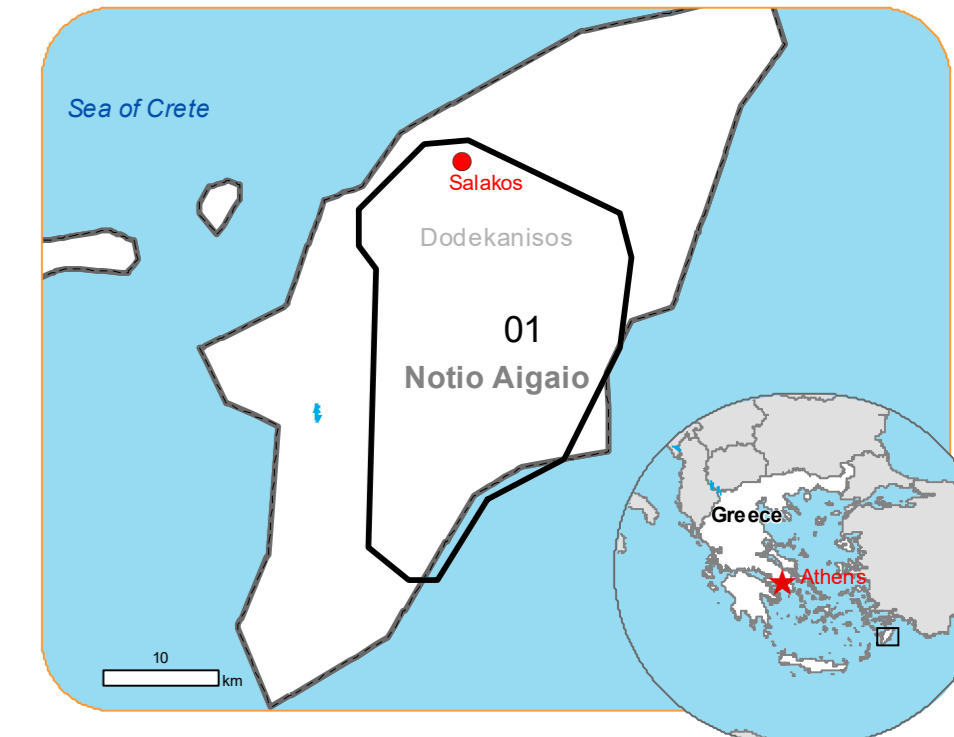




Situation as of 29/07/2023 09:32 UTC  
Grading - Overview map 01



Observed Event 17773.5 ha  
Potentially affected population ~750

Affected Built-up

Built-up 737 No.

Crisis Information

Burnt Area

Built-Up Grading

- Unclassified Building, Possibly damaged
- Unclassified Building, Damaged
- Residential Building, Possibly damaged
- Residential Building, Destroyed
- Residential Building, Damaged
- Non-residential Building, Possibly damaged
- Non-residential Building, Damaged
- Non-residential Building, Destroyed

Facilities Grading

- Long-distance pipeline or line, Possibly damaged
- Local pipeline or line, Possibly damaged
- Destroyed
- Damaged
- Possibly damaged

Transportation Grading

- Main road, No visible damage
- Local road, No visible damage
- Track, No visible damage
- Airfield and Heliport, No visible damage

Affected Land Use-Cover

- Arable land
- Permanent crops
- Heterogeneous agricultural areas
- Forest
- Shrub and/or herbaceous vegetation associations
- Open spaces with little or no vegetation
- Other

General Information

- Area of Interest
- Detail map

Placenames

- Placename

Hydrography

- Coastline
- River
- Stream
- Lake
- Reservoir

**Event:** A wildfire started in the afternoon of 18 July in a forest area of Rodos Island and is still ongoing. Residents of the villages of Eleousa, Salakanos and Dimilia were ordered to evacuate. According to the Hellenic Fire Service, 86 firefighters are currently operating in the area, assisted by 3 ground force groups, 28 vehicles, 3 water-bombing aircraft and 3 helicopters. Personnel and means of municipalities, regions, armed forces and groups of volunteers are assisting. Copernicus EMS Rapid Mapping is requested to provide an initial rough estimation, to support the monitoring and assessment of the extent of the wildfire and the damage caused.

**Data sources and analysis:** Pre-event image: Pléiades-1A/B © CNES (2023), distributed by Airbus DS (acquired on 15/06/2023 at 09:05 UTC, resolution 0,5 m). Pléiades-1A/B © CNES (2023), distributed by Airbus DS (acquired on 14/08/2022 at 09:02 UTC, resolution 0,5 m). Post-event image: GeoEye © Maxar Technologies, Inc. (2023), (acquired on 29/07/2023 at 09:32 UTC, resolution 0.5 m). This image is used as background image. All images are provided under COPERNICUS by the European Union and ESA, all rights reserved.

Base vector layers: OpenStreetMap © OpenStreetMap contributors (2023), Wikimapia.org, GeoNames 2015, Corine Land Cover (CLC) 2018, EuroBoundaryMap 2017 © EuroGeographics, Inset maps: JRC 2013, GISCO 2010 © EuroGeographics, Natural Earth 2012, CCM River DB © EUJRC2007, GeoNames 2015.

Population data: GHS Population Grid © European Commission, 2022 [https://ghsl.jrc.ec.europa.eu/ghs\\_pop2022.php](https://ghsl.jrc.ec.europa.eu/ghs_pop2022.php)  
Digital Elevation Model: COP-DEM-EEA-10-R product © DLR e.V. (2014-2018) and © Airbus Defence and Space GmbH (2020) provided under COPERNICUS by the European Union and ESA, all rights reserved.

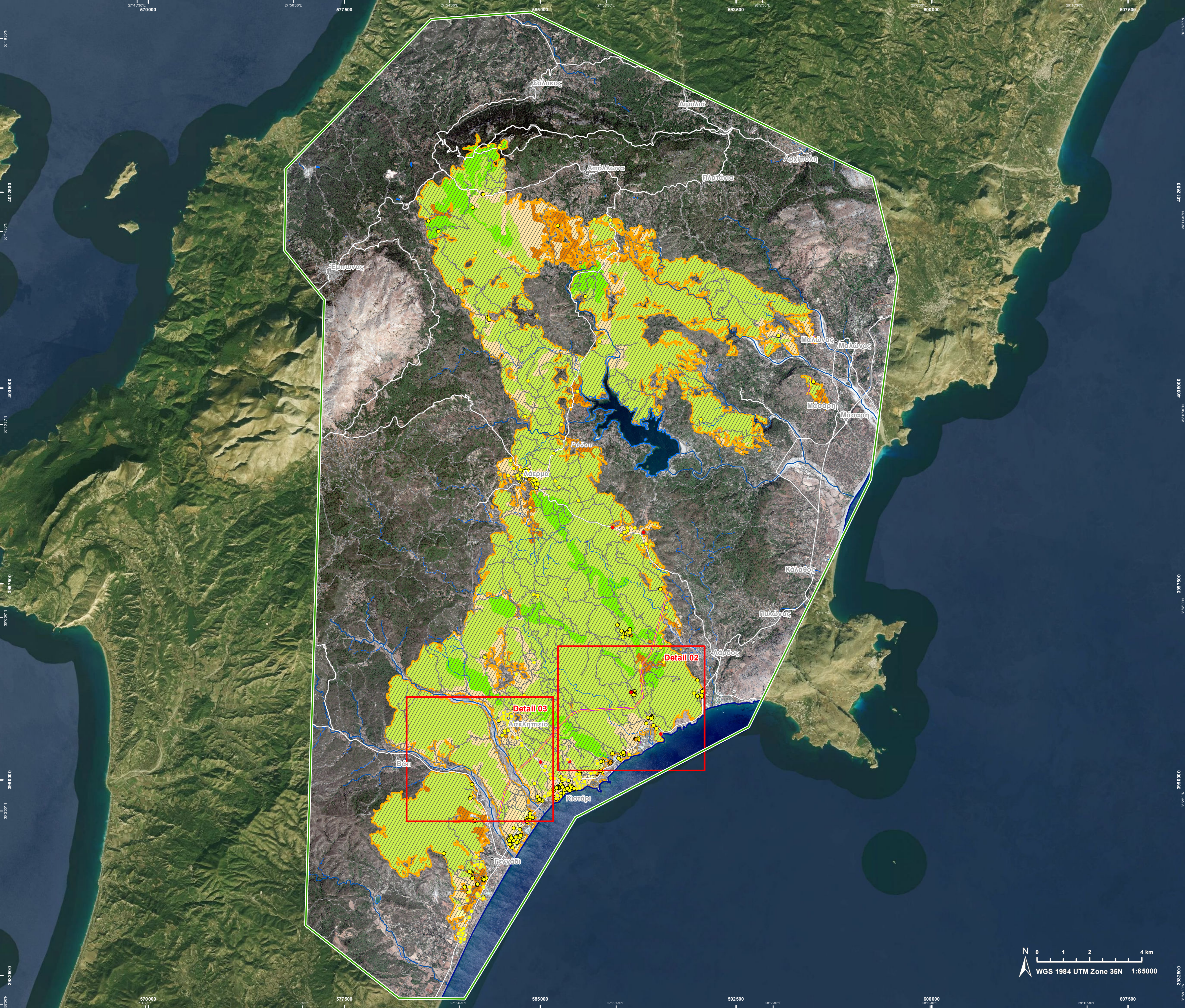
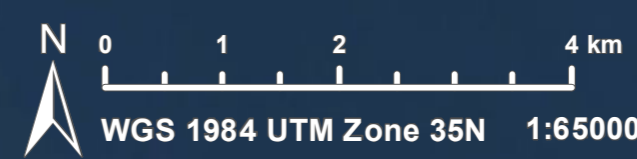
The thematic layer has been derived from post-event satellite image by means of visual interpretation.

This analysis has been supplemented by the social media.

The current burnt area cumulates all burnt area extents from previous post-event products.

Map produced by ITHACA released by e-GEOS on the 30/07/2023.

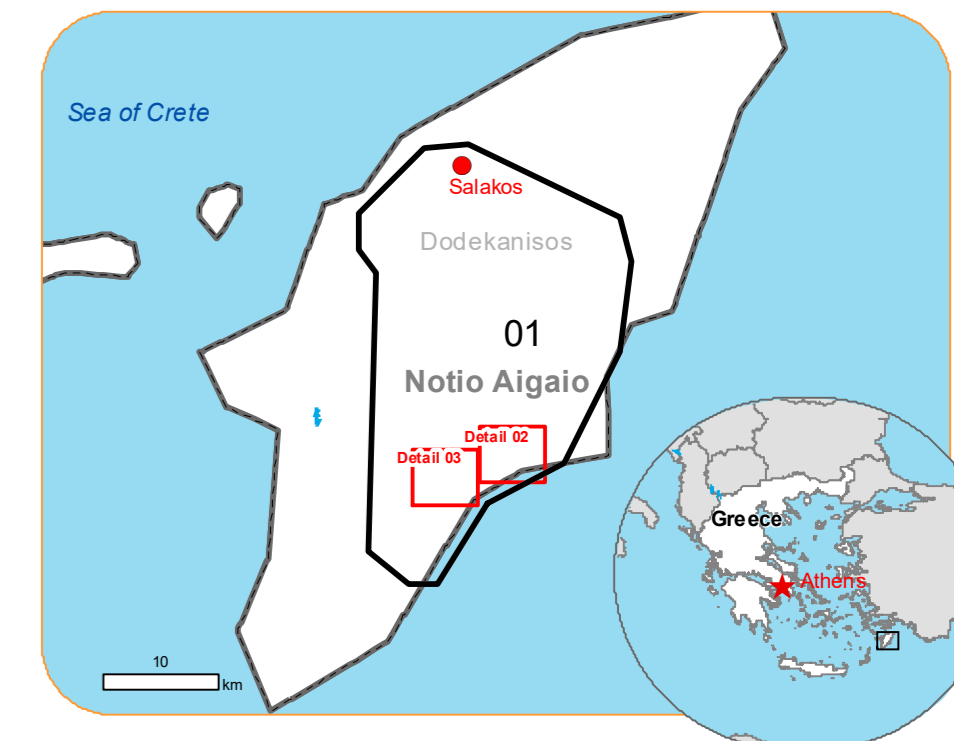
Details on this activation and service conditions available through the QR code or at the link: <https://emergency.copernicus.eu/EMSR675>





Situation as of 29/07/2023 09:32 UTC

Grading - Detail map 02



**Observed Event**  
2042.3 ha  
(11% of total in AOI)

**Potentially affected population**  
~ 200  
(27% of total in AOI)

**Affected Built-up and Transportations**

**Built-up**  
63 No.  
(9% of total affected)

**Crisis Information**

**Burnt Area**  
Main road, No visible damage  
Local road, No visible damage  
Track, No visible damage

**Built-Up Grading**

Unclassified Building, Possibly damaged  
Unclassified Building, Damaged  
Unclassified Building, Destroyed  
Residential Building, Possibly damaged  
Residential Building, Destroyed  
Non-residential Building, Possibly damaged  
Non residential Building, Damaged

**Affected Land Use-Cover**  
Arable land  
Permanent crops  
Heterogeneous agricultural areas  
Forest  
Shrub and/or herbaceous vegetation associations  
Other

**General Information**  
Area of Interest

**Hydrography**  
Coastline  
Stream  
Lake

**Facilities Grading**

Long-distance pipeline or line, Possibly damaged

**Facilities Grading**

Destroyed  
Damaged  
Possibly damaged

**Event:**

A wildfire started in the afternoon of 18 July in a forest area of Rodos Island and is still ongoing. Residents of the villages of Eleousa, Salakanos and Dimilia were ordered to evacuate. According to the Hellenic Fire Service, 86 firefighters are currently operating in the area, assisted by 3 ground force groups, 28 vehicles, 3 water-bombing aircraft and 3 helicopters. Personnel and means of municipalities, regions, armed forces and groups of volunteers are assisting. Copernicus EMS Rapid Mapping is requested to provide an initial rough estimation, to support the monitoring and assessment of the extent of the wildfire and the damage caused.

**Data sources and analysis:** Pre-event image: Pléiades-1A/B © CNES (2023), distributed by Airbus DS (acquired on 15/06/2023 at 09:05 UTC, resolution 0.5 m). Pléiades-1A/B © CNES (2023), distributed by Airbus DS (acquired on 14/08/2022 at 09:02 UTC, resolution 0.5 m). Post-event image: GeoEye © Maxar Technologies, Inc. (2023), (acquired on 29/07/2023 at 09:32 UTC, resolution 0.5 m). This image is used as background image. All images are provided under COPERNICUS by the European Union and ESA, all rights reserved.

Base vector layers: OpenStreetMap © OpenStreetMap contributors (2023), Wikimapia.org, GeoNames 2015, Corine Land Cover (CLC) 2018, EuroBoundaryMap 2017 © EuroGeographics, Inset maps: JRC 2013, GISCO 2010 © EuroGeographics, Natural Earth 2012, CCM River DB © EUJRC2007, GeoNames 2015.

Population data: GHS Population Grid © European Commission, 2022 [https://ghsl.jrc.ec.europa.eu/ghs\\_pop2022.php](https://ghsl.jrc.ec.europa.eu/ghs_pop2022.php)  
Digital Elevation Model: COP-DEM-EEA-10-R product © DLR e.V. (2014-2018) and © Airbus Defence and Space GmbH (2020) provided under COPERNICUS by the European Union and ESA, all rights reserved.

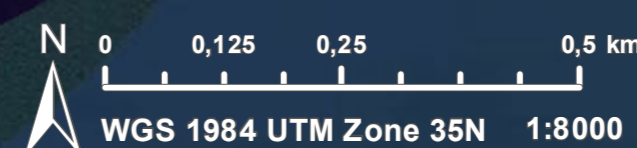
The thematic layer has been derived from post-event satellite image by means of visual interpretation.

This analysis has been supplemented by the social media.

The current burnt area cumulates all burnt area extents from previous post-event products.

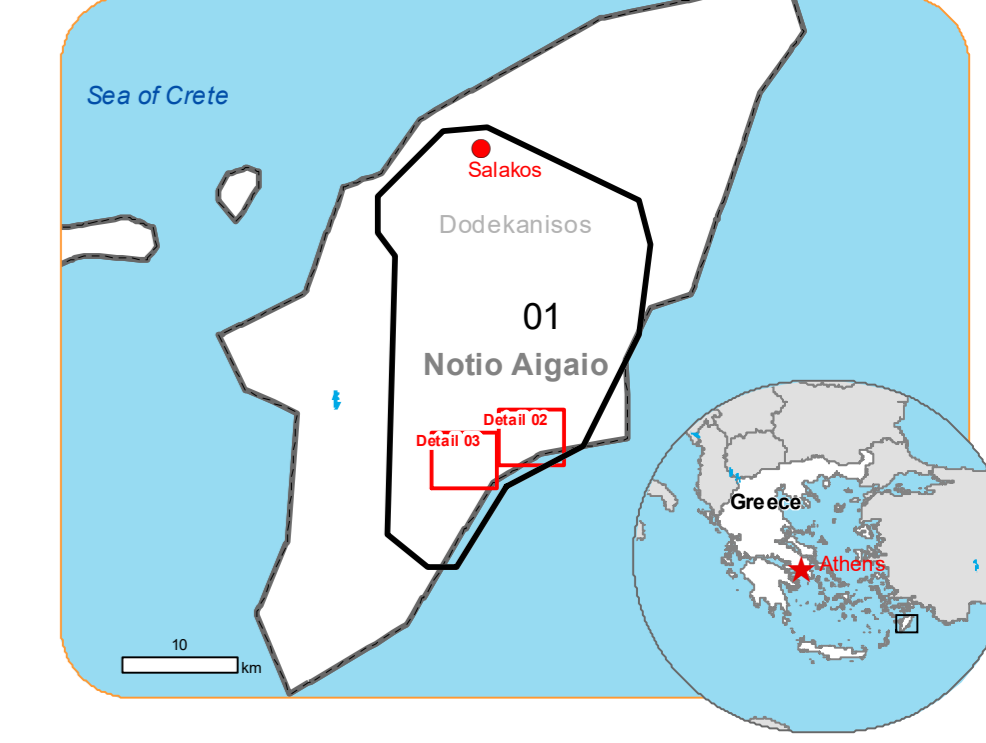
Map produced by ITHACA released by e-GEOS on the 30/07/2023.

Details on this activation and service conditions available through the QR code or at the link: <https://emergency.copernicus.eu/EMSR675>



**EMSR675 - AOI01**  
**Wildfire in Greece**  
**SALAKOS**

**Situation as of 29/07/2023 09:32 UTC**  
Grading - Detail map 03



**Observed Event**  
2,148.2 ha  
(12% of total in AOI)

**Potentially affected population**  
~ 100  
(13% of total in AOI)

**Affected Built-up and Transportations**

**Built-up**  
242 No.  
(33% of total affected)

**Crisis Information**

- Burnt Area**
  - Built-Up Grading**
    - Unclassified Building, Possibly damaged
    - Residential Building, Possibly damaged
    - Residential Building, Destroyed
    - Residential Building, Damaged
    - Non-residential Building, Possibly damaged
    - Non residential Building, Damaged
  - Facilities Grading**
    - Long-distance pipeline or line, Possibly damaged
    - Local pipeline or line, Possibly damaged
    - Main road, No visible damage
    - Local road, No visible damage
    - Track, No visible damage
- Affected Land Use-Cover**
- Arable land
  - Permanent crops
  - Heterogeneous agricultural areas
  - Forest
  - Shrub and/or herbaceous vegetation associations
  - Open spaces with little or no vegetation
- General Information**
- Area of Interest
- Placenames**
- Placename
- Hydrography**
- Coastline
  - River
  - Stream

**Event:**  
A wildfire started in the afternoon of 18 July in a forest area of Rodos Island and is still ongoing. Residents of the villages of Eleousa, Salakanos and Dimilia were ordered to evacuate. According to the Hellenic Fire Service, 86 firefighters are currently operating in the area, assisted by 3 ground force groups, 28 vehicles, 3 water-bombing aircraft and 3 helicopters. Personnel and means of municipalities, regions, armed forces and groups of volunteers are assisting. Copernicus EMS Rapid Mapping is requested to provide an initial rough estimation, to support the monitoring and assessment of the extent of the wildfire and the damage caused.

**Data sources and analysis:** Pre-event image: Pléiades-1A/B © CNES (2023), distributed by Airbus DS (acquired on 15/06/2023 at 09:05 UTC, resolution 0,5 m).  
Pléiades-1A/B © CNES (2023), distributed by Airbus DS (acquired on 14/08/2022 at 09:02 UTC, resolution 0,5 m).  
Post-event image: GeoEye © Maxar Technologies, Inc. (2023), (acquired on 29/07/2023 at 09:32 UTC, resolution 0,5 m). This image is used as background image.  
All images are provided under COPERNICUS by the European Union and ESA, all rights reserved.

Base vector layers: OpenStreetMap © OpenStreetMap contributors (2023), Wikimapia.org, GeoNames 2015, Corine Land Cover (CLC) 2018, EuroBoundaryMap 2017 © EuroGeographics.  
Inset maps: JRC 2013, GISCO 2010 © EuroGeographics, Natural Earth 2012, CCM River DB © EUJRC2007, GeoNames 2015.

Population data: GHS Population Grid © European Commission, 2022  
[https://ghsl.jrc.ec.europa.eu/ghs\\_pop2022.php](https://ghsl.jrc.ec.europa.eu/ghs_pop2022.php)  
Digital Elevation Model: COP-DEM-EEA-10-R product © DLR e.V. (2014-2018) and © Airbus Defence and Space GmbH (2020) provided under COPERNICUS by the European Union and ESA, all rights reserved.

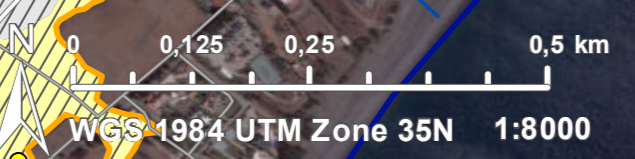
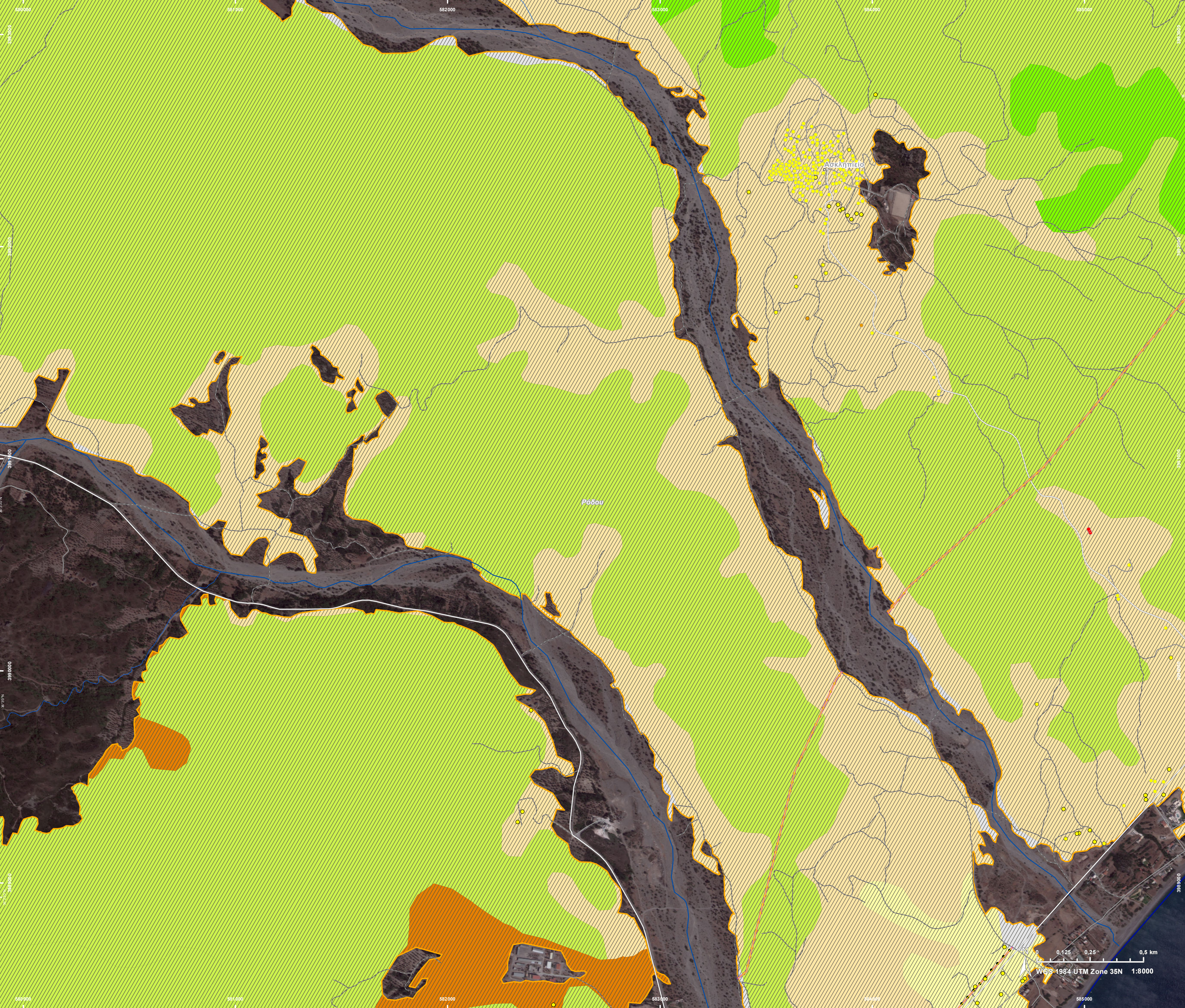
The thematic layer has been derived from post-event satellite image by means of visual interpretation.

This analysis has been supplemented by the social media.

The current burnt area cumulates all burnt area extents from previous post-event products.

Map produced by ITHACA released by e-GEOS on the 30/07/2023.

Details on this activation and service conditions available through the QR code or at the link:  
<https://emergency.copernicus.eu/EMSR675>



Consequences within the AOI						
	Unit of measurement	Destroyed	Damaged	Possibly damaged*	Total affected**	Total in AOI
Burnt area	ha					17.773,5
Estimated population	Number of inhabitants				~ 750	~ 9.500
Built-up	Residential Buildings	ha	0,0	0,0	0,0	98,5
	Office buildings	ha	0,0	0,0	0,0	0,4
	Wholesale and retail trade buildings	ha	0,0	0,0	0,0	0,9
	Industrial buildings	ha	0,0	0,0	0,0	9,9
	School, university and research buildings	ha	0,0	0,0	0,0	1,4
	Hospital or institutional care buildings	ha	0,0	0,0	0,0	0,1
	Military	ha	0,0	0,0	0,0	30,5
	Cemetery	ha	0,0	0,0	0,0	2,1
	Unclassified	ha	0,0	0,0	0,0	16,8
	Residential Buildings	No.	5	1	316	337
	Office buildings	No.	0	0	0	1
	Wholesale and retail trade buildings	No.	0	0	1	15
	Industrial buildings	No.	0	0	0	1
	Public entertainment buildings	No.	0	1	0	1
	Museums and libraries	No.	0	0	0	1
	School, university and research buildings	No.	0	0	0	2
	Hospital or institutional care buildings	No.	0	0	0	1
	Other non-residential buildings	No.	2	2	148	152
	Non-residential farm buildings	No.	0	0	4	12
	Buildings used as places of worship and for religious activities	No.	0	0	9	38
	Other buildings not elsewhere classified	No.	0	0	0	4
	Hotel buildings	No.	0	1	0	68
	Other short-stay accommodation buildings	No.	0	0	1	2
	Communication buildings, stations, terminals and associated buildings	No.	0	0	0	1
	Unclassified	No.	1	9	236	276
Transportation	Helipad	ha	0,0	0,0	0,0	0,1
	Primary Road	km	0,0	0,0	0,0	17,6
	Secondary Road	km	0,0	0,0	0,0	194,4
	Local Road	km	0,0	0,0	0,0	252,1
	Cart Track	km	0,0	0,0	0,0	1.135,2
Facilities	Settling Basin	ha	0,0	0,0	0,0	0,4
	Dams	ha	0,0	0,0	0,0	8,9
	Constructions for mining or extraction	ha	0,0	0,0	0,0	50,7
	Power plant constructions	ha	0,0	0,0	0,0	0,7
	Sport and recreation constructions	ha	0,2	0,0	0,3	15,9
	Other civil engineering works not elsewhere classified	ha	0,0	0,0	0,0	1,5
	Long-distance pipelines, communication and electricity lines	km	0,0	0,0	12,6	30,3
	Local pipelines and cables	km	0,0	0,0	0,5	10,3
	Dams	km	0,0	0,0	0,0	0,2
Land use	Shrub and/or herbaceous vegetation association	ha				12.950,1
	Heterogeneous agricultural areas	ha				2.468,4
	Forests	ha				1.440,8
	Permanent crops	ha				719,7
	Arable land	ha				140,1
	Other	ha				35,0
	Open spaces with little or no vegetation	ha				19,4
	Pastures	ha				0,0
* Presence of damage proxies and proximity with destroyed/damaged asset						
** Sum of all damage classes						

**Disclaimer:**

Full disclaimer and other helpful information available in the online manual:  
<https://emergency.copernicus.eu/mapping/ems/online-manual-rapid-mapping-products>  
 © European Union / Copernicus Emergency Management Service

**Data access:**

All data displayed on the map(s), as well as the Physiography and Land Use - Land Cover layers, are available in the Crisis Information Package and the Base Layer Package (for reference data). The table above is available in editable format in the Crisis Information Package. All products and data are also available for download on the portal.

Access to the portal

