

**Situation as of 28/08/2023 09:39 UTC**  
 Delineation MONIT01 - Overview map 01



**Burnt area 8,158.5 ha** **Potentially affected population ~ 250**

Potentially Affected Built-up and Transportations

**Built-Up 10.1 ha** **Road 231.9 km**

**Crisis Information**

**Burnt area**

**General Information**

**Area of Interest**

**Administrative boundaries**

**Municipality**

**Placenames**

**Placename**

**Built-Up Area**

**Residential**

**Hydrography**

**Stream**

**Facilities**

**Long-distance pipelines or lines**

**Mining or extraction site**

**Power plant**

**Sport and recreation constructions**

**Water or Aquatic infrastructure**

**Transportation**

**Main road**

**Local road**

**Track**

	Current	Forecast	
	28 August 09:39 UTC	29 August 09:39 UTC	30 August 09:39 UTC
Wind direction and speed	🌀 4 km/h	🌀 7 km/h	🌀 23 km/h
Temperature and relative Humidity	🌡️ 27° 🌫️ 56%	🌡️ 27° 🌫️ 41%	🌡️ 24° 🌫️ 57%

Data retrieved from ECMWF on August 28, 09:39 UTC. Calculated at: 38.305°N, 22.742°E.

**Event:**  
 On 21 August 2023 at 05:59 UTC two wildfires started in a forest area near Prodromos village (Sterea Ellada Region) and in the afternoon (15:10 UTC) in a forest area near Kyriaki village. The event is ongoing. Residents of the villages Prodromos, Paralia Sarandi, Karloti, Tarsos, Panagia Kalamiotissa and Agios Athanasios were ordered to evacuate. According to the Hellenic Fire Service 66 firefighters are currently operating in the area, assisted by 10 ground force groups, 43 vehicles, 7 water-bombing aircrafts and 7 helicopters. Personnel and means of municipalities, Region and groups of volunteers are assisting. Copernicus EMS Rapid Mapping is requested to provide initial rough estimation and wildfire extent emergency mapping.

**Data sources and analysis:**  
 Pre-event image: Sentinel-2A/B (2023) (acquired on 27/07/2023 at 09:20 UTC, resolution 10.0 m).  
 Post-event image: WorldView-3 © Maxar Technologies, Inc. (2023), (acquired on 28/08/2023 at 09:39 UTC, resolution 2.0 m). This image is used as background image.  
 All images are provided under COPERNICUS by the European Union and ESA, all rights reserved.

Base vector layers: OpenStreetMap © OpenStreetMap contributors (2023), Wikimapia.org, GeoNames 2015, Corine Land Cover (CLC) 2018, EuroBoundaryMap 2017 © EuroGeographics.

Inset maps: JRC 2013, GISCO 2010 © EuroGeographics, Natural Earth 2012, CCM River DB © EUJRC2007, GeoNames 2015.

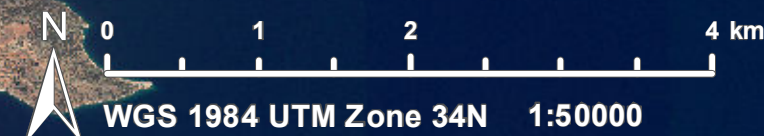
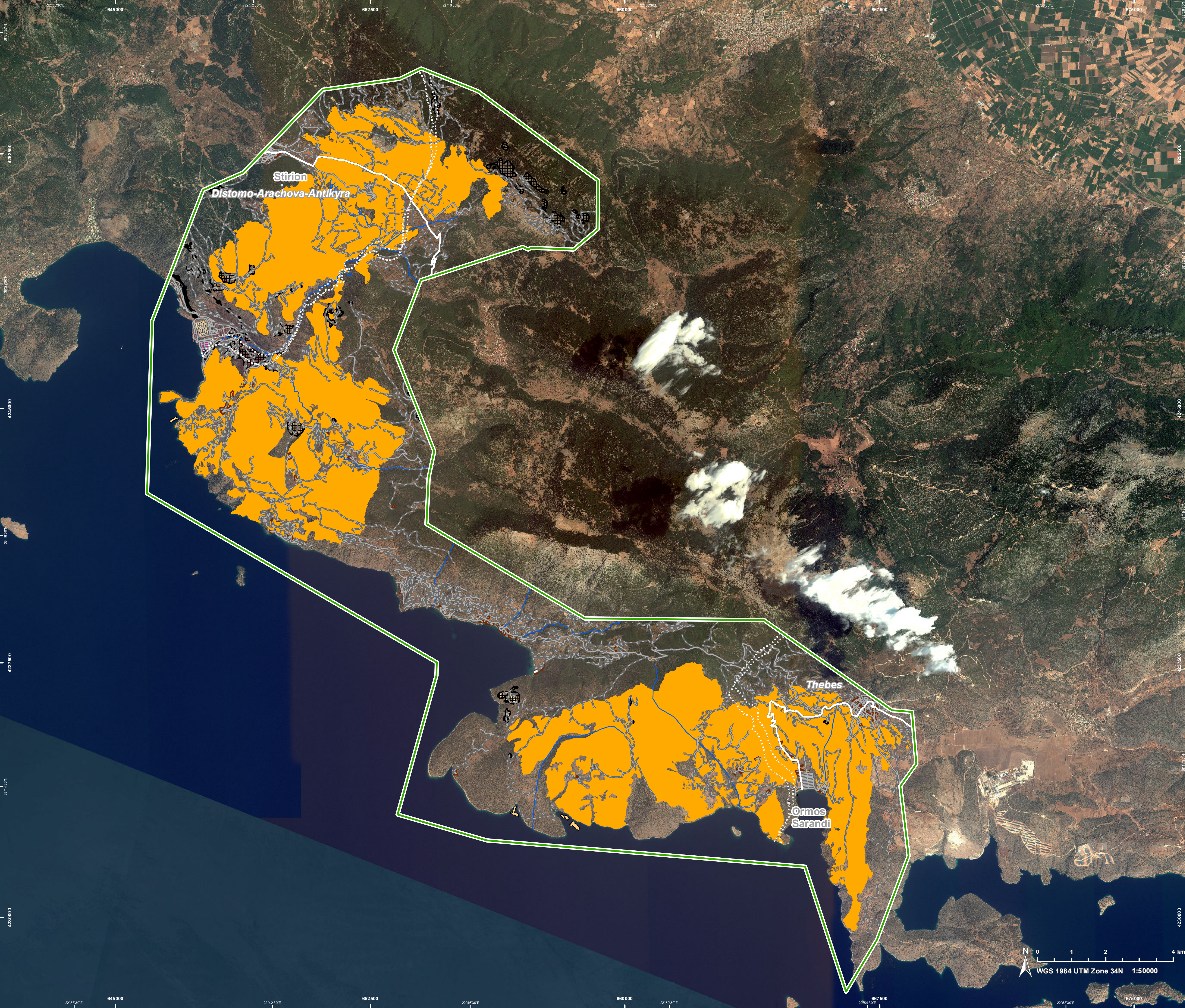
Population data: GHS Population Grid © European Commission, 2023 [https://ghsl.jrc.ec.europa.eu/ghs\\_pop2023.php](https://ghsl.jrc.ec.europa.eu/ghs_pop2023.php)

The thematic layer has been derived from post-event satellite image by means of visual interpretation.

**Disclaimer:** Full disclaimer and other helpful information available in the online manual: <https://emergency.copernicus.eu/mapping/ems/online-manual-rapid-mapping-products>.

Map produced by e-GEOS released by e-GEOS on the 29/08/2023.

Details on this activation and service conditions available through the QR code or at the link: <https://rapidmapping.emergency.copernicus.eu/EMSR687>





Consequences within the AOI				
		Unit of measurement	Affected	Total in AOI
Burnt area		ha		8,158.5
Estimated population		Number of inhabitants	~ 250	~ 2,000
Built-up	Residential Buildings	ha	9.1	67.3
	Industrial buildings	ha	1.0	61.4
Transportation	Primary Road	km	0.0	0.1
	Secondary Road	km	8.1	17.5
	Local Road	km	21.5	114.9
	Cart Track	km	202.3	555.4
Facilities	Breakwater	ha	0.0	0.0
	Constructions for mining or extraction	ha	20.7	273.3
	Power plant constructions	ha	0.0	7.4
	Sport and recreation constructions	ha	0.1	0.6
	Other civil engineering works not elsewhere classified	ha	0.0	9.0
	Long-distance pipelines, communication and electricity lines	km	0.0	9.4
Land use	Shrub and/or herbaceous vegetation association	ha	6,739.4	13,942.5
	Permanent crops	ha	939.4	2,330.9
	Heterogeneous agricultural areas	ha	228.1	412.2
	Open spaces with little or no vegetation	ha	204.0	385.9
	Other	ha	46.4	4,313.6
	Forests	ha	1.3	1,260.4
	Pastures	ha	0.0	28.7

**Disclaimer:**

Full disclaimer and other helpful information available in the online manual:

<https://emergency.copernicus.eu/mapping/ems/online-manual-rapid-mapping-products>

© European Union / Copernicus Emergency Management Service

**Data access:**

All data displayed on the map(s), as well as Land Use - Land Cover layer(s), are available in the Crisis Information Package and the Base Layer Package (for reference data).

The table above is available in editable format in the Crisis Information Package.

All products and data are also available for download on the portal.

Access to  
the portal



PROGRAMME OF THE  
EUROPEAN UNION

