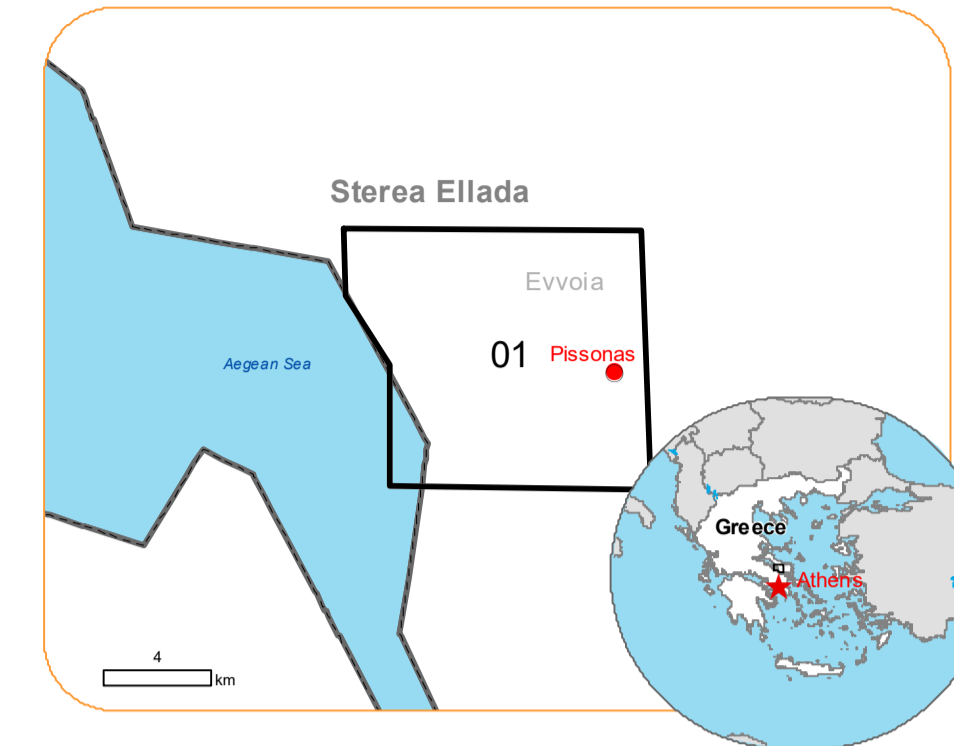


EMSR688 - AOI01
 Wildfire in Evvoia Island, Greece
PISSONAS

Situation as of 23/08/2023 09:46 UTC
 Delineation - Overview map 01



Burnt area 529.6 ha **Potentially affected population ~ 60**

Potentially Affected Built-up and Transportations

Road 10.1 km

Crisis Information

General Information

Administrative boundaries

Built-Up Area

Wind direction and speed

Temperature and relative Humidity

Forecast

23 August 09:46 UTC

24 August 09:46 UTC

25 August 09:46 UTC

10 km/h

27° 60%

9 km/h

26° 64%

7 km/h

27° 56%

Data retrieved from ECMWF on August 23, 09:46 UTC. Calculated at: 38°33'38"N, 23°40'27"E

Event: On the 21 August 2023 at 08:11 UTC, a wildfire started in a forest area on Evvoia island in Sterea Ellada Region. The fire is still active. According to the Hellenic Fire Service 40 firefighters are currently operating in the area, assisted by 2 ground force groups, 29 vehicles, 8 water aircrafts and 7 helicopters. Copernicus EMS Rapid Mapping is requested to provide fire extent emergency mapping.

Data sources and analysis: Pre-event image: Sentinel-2B (2023) (acquired on 18/08/2023 at 09:05 UTC, resolution 10.0m). Post-event image: GeoEye © Maxar Technologies, Inc. (2023), (acquired on 23/08/2023 at 09:46 UTC, resolution 2.0 m). This image is used as background image. All images are provided under COPERNICUS by the European Union and ESA, all rights reserved.

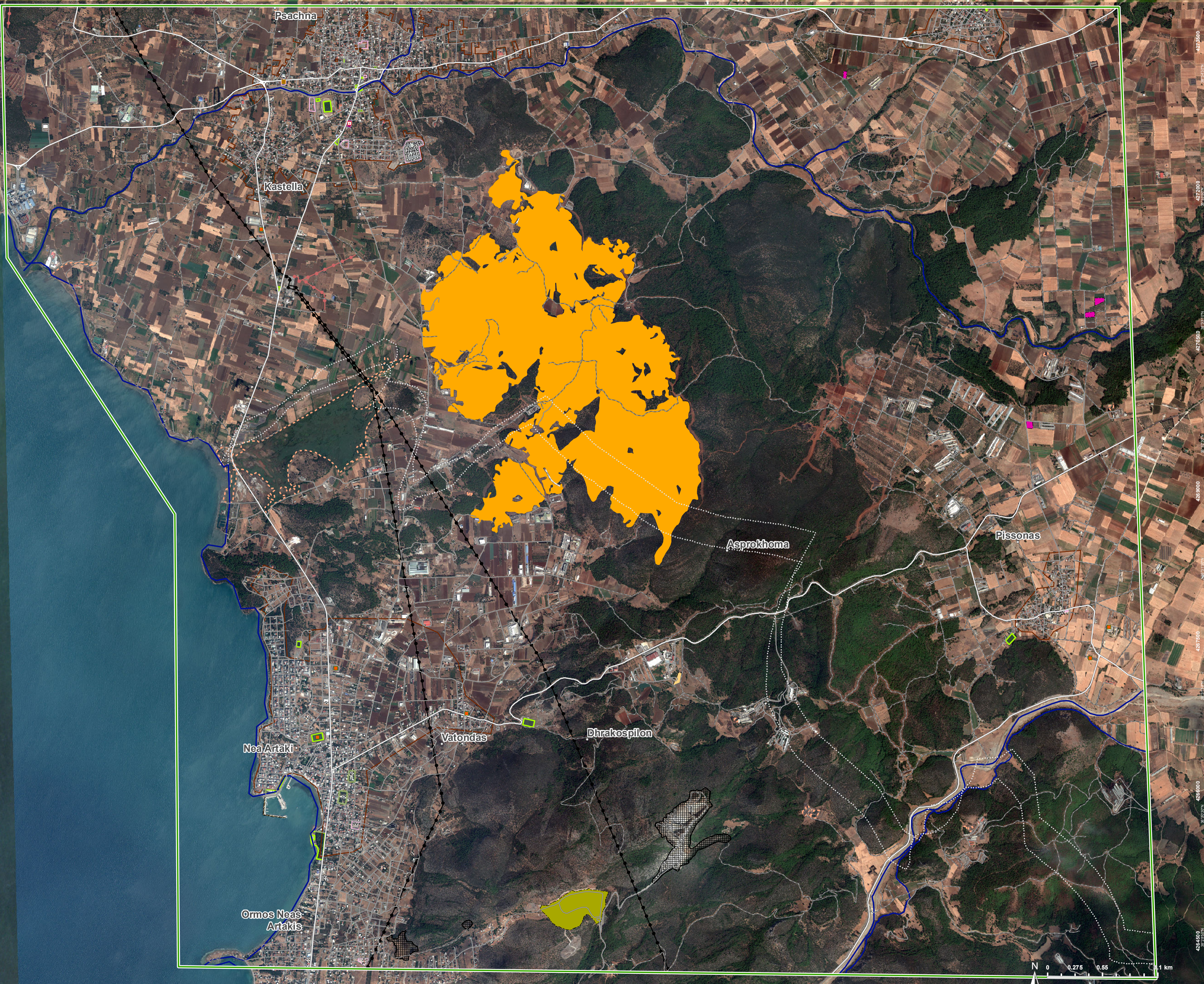
Base vector layers: OpenStreetMap © OpenStreetMap contributors (2023), Wikimapia.org, GeoNames 2015, Corine Land Cover (CLC) 2018, EuroBoundaryMap 2017 © EuroGeographics,

Population data: GHS Population Grid © European Commission, 2023 https://ghsl.jrc.ec.europa.eu/ghs_pop2023.php

The thematic layer has been derived from post-event satellite image by means of visual interpretation.

Map produced by Planetek Hellas released by e-GEOS on the 23/08/2023.

Details on this activation and service conditions available through the QR code or at the link: <https://rapidmapping.emergency.copernicus.eu/EMSR688>



WGS 1984 UTM Zone 34N 1:18000

Consequences within the AOI				
		Unit of measurement	Affected	Total in AOI
Burnt area		ha		529.6
Estimated population	Number of inhabitants		~ 60	~ 16,000
Built-up	Wholesale and retail trade buildings	No.	0	1
	Industrial buildings	No.	0	3
	Public entertainment buildings	No.	0	1
	School, university and research buildings	No.	0	1
	Hospital or institutional care buildings	No.	0	1
	Buildings used as places of worship and for religious activities	No.	0	1
	Building point	No.	0	54
Transportation	Primary Road	km	0.0	11.8
	Secondary Road	km	0.0	31.9
	Local Road	km	1.4	267.3
	Cart Track	km	8.8	243.3
Facilities	Constructions for mining or extraction	ha	0.0	30.9
	Power plant constructions	ha	0.0	1.8
	Long-distance pipelines, communication and electricity lines	km	0.0	18.7
	Local pipelines and cables	km	0.0	1.4
Land use	Shrub and/or herbaceous vegetation association	ha	346.0	3,476.5
	Forests	ha	117.9	602.5
	Heterogeneous agricultural areas	ha	62.6	1,412.9
	Arable land	ha	3.1	3,073.4
	Permanent crops	ha	0.0	124.9
	Open spaces with little or no vegetation	ha	0.0	27.8
	Inland wetlands	ha	0.0	86.9
	Other	ha	0.0	1,128.1

Disclaimer:

Full disclaimer and other helpful information available in the online manual:
<https://emergency.copernicus.eu/mapping/ems/online-manual-rapid-mapping-products>
 © European Union / Copernicus Emergency Management Service

Data access:

All data displayed on the map(s), as well as the Physiography and Land Use - Land Cover layers, are available in the Crisis Information Package and the Base Layer Package (for reference data). The table above is available in editable format in the Crisis Information Package. All products and data are also available for download on the portal.

Access to the portal

