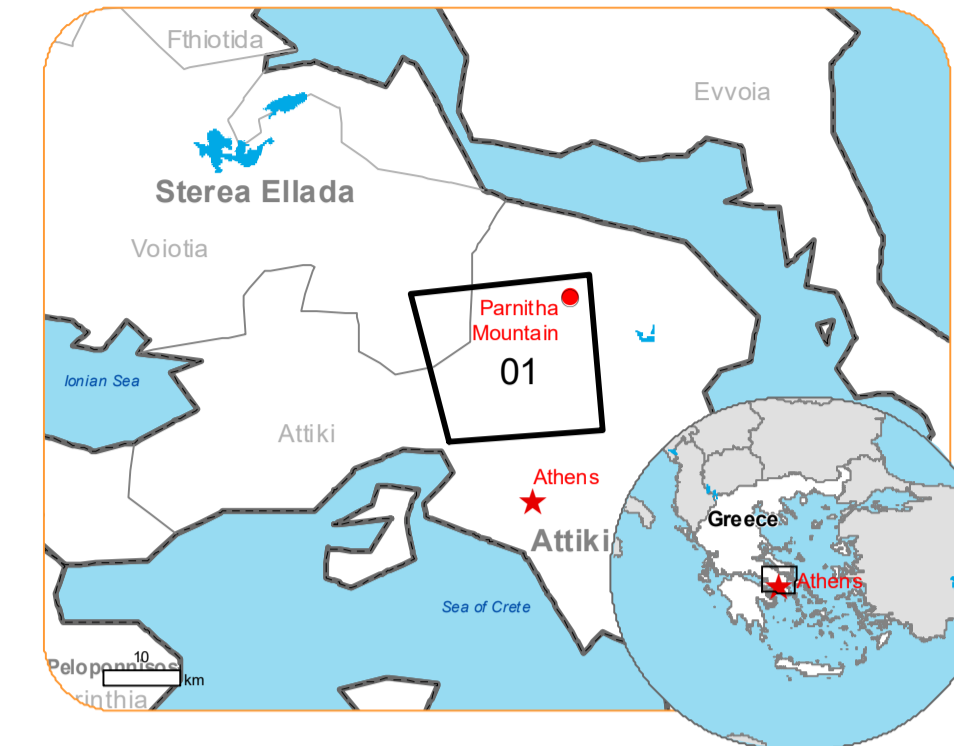


**EMSR690 - AOI01**  
**Wildfire in Greece**  
**PARNITHA MOUNTAIN**

**Situation as of 28/08/2023 09:31 UTC**  
 Delineation MONIT03 - Overview map 01



**Burnt area 6,193.1 ha**  
**Potentially affected population ~ 1600**

**Potentially Affected Built-up and Transportations**

**Built-Up 276 No.**  
**Road 126.2 km**  
**Railway 1.0 km**

- |                                  |                                    |                       |
|----------------------------------|------------------------------------|-----------------------|
| <b>Crisis Information</b>        | <b>Hydrography</b>                 | <b>Transportation</b> |
| Burnt area                       | River                              | Highway               |
| <b>General Information</b>       | Stream                             | Main road             |
| Area of Interest                 | Lake                               | Local road            |
| <b>Administrative boundaries</b> | <b>Facilities</b>                  | Track                 |
| Region                           | Long-distance pipelines or lines   | Railway               |
| <b>Placenames</b>                | Dam                                | Airfield runway       |
| Placename                        | Mining or extraction site          | Subways               |
| <b>Built-Up Area</b>             | Water Well                         | Airfield              |
| Residential                      | Power plant                        | Helipad               |
| Non residential                  | Sport and recreation constructions |                       |
| Unclassified                     | Dump Site                          |                       |
|                                  | Water or Aquatic infrastructure    |                       |

	Current	Forecast	
	28 August 09:31 UTC	29 August 09:31 UTC	30 August 09:31 UTC
<b>Wind direction and speed</b>	4 km/h	3 km/h	6 km/h
<b>Temperature and relative Humidity</b>	27°  41%	27°  48%	25°  53%

Data retrieved from ECMWF on August 28, 13:02 UTC. Calculated at: 38°8'43"N 23°37'23"E

**Event** On Tuesday of 22 August (11.56 local time) a wildfire started in a forest area near the monastery of Kleiston on Parnitha mountain in Attica Region. The fire is still ongoing. Copernicus EMS Rapid Mapping is requested to provide fire extent and damage assessment emergency mapping.

**Data sources and analysis:** Pre-event image: ESRI World Imagery © DigitalGlobe (acquired on 27/03/2023, resolution 0.3 m). Post-event image: GeoEye@ Maxar Technologies, Inc. (2023), (acquired on 28/08/2023 at 09:31 UTC, resolution 2.0 m). This image is used as background image. All images are provided under COPERNICUS by the European Union and ESA, all rights reserved.

Base vector layers: OpenStreetMap © OpenStreetMap contributors (2023), Wikimapia.org, GeoNames 2015, Corine Land Cover (CLC) 2018, EuroBoundaryMap 2017 © EuroGeographics. Inset maps: JRC 2013, GISCO 2010 © EuroGeographics, Natural Earth 2012, CCM River DB © EUJRC2007, GeoNames 2015.

Population data: GHS Population Grid © European Commission, 2023 [https://ghsl.jrc.ec.europa.eu/ghs\\_pop2023.php](https://ghsl.jrc.ec.europa.eu/ghs_pop2023.php)

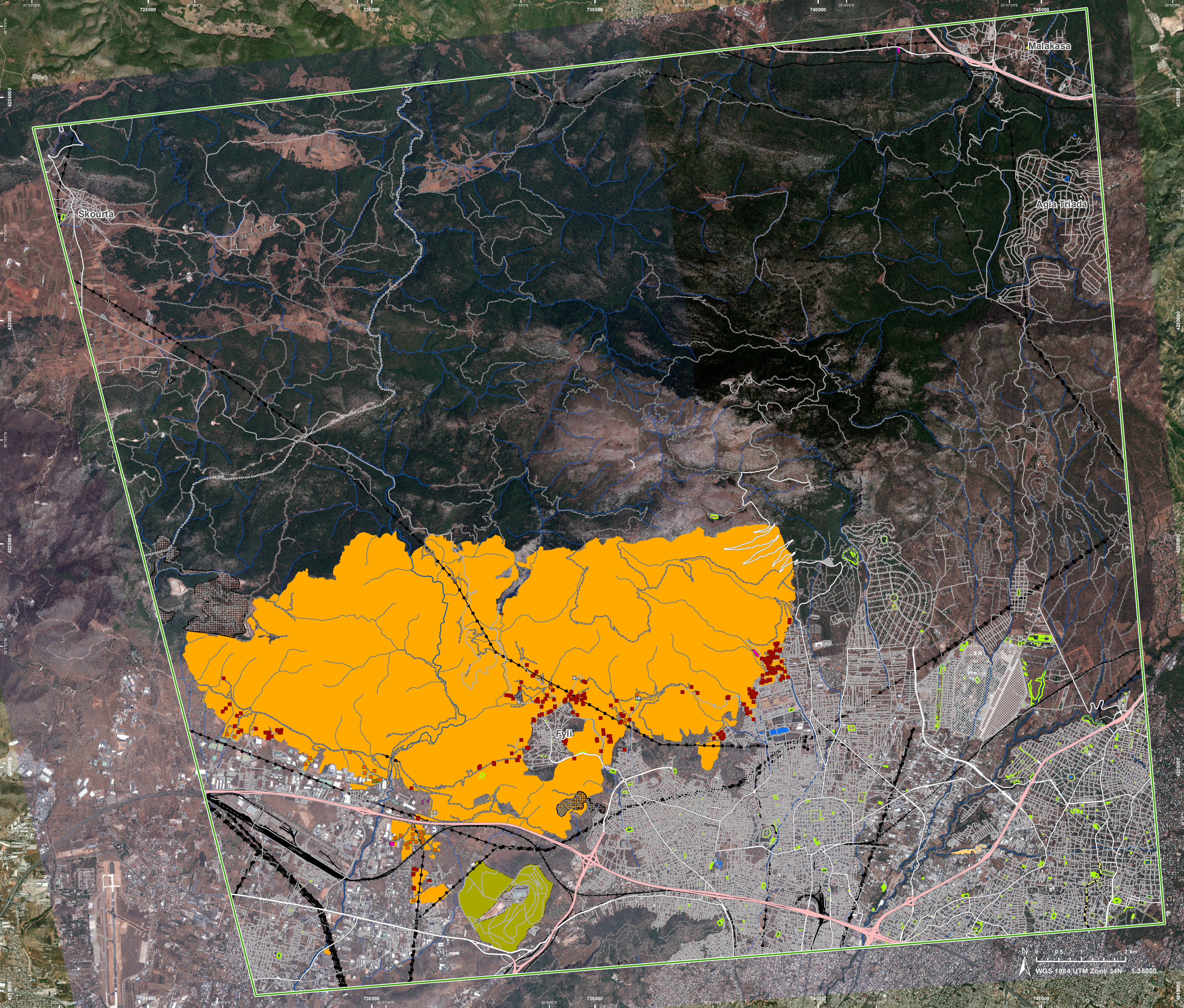
Digital Elevation Model: COP-DEM-EEA-10-R product © DLR e.V. (2014-2018) and © Airbus Defence and Space GmbH (2020) provided under COPERNICUS by the European Union and ESA, all rights reserved.

The thematic layer has been derived from post-event satellite imagery by means of visual interpretation.

The current burnt area cumulates all burnt area extents from previous post-event products.

Map produced by SERTIT released by e-GEOS on the 28/08/2023.

Details on this activation and service conditions available through the QR code or at the link: <https://rapidmapping.emergency.copernicus.eu/EMSR690>



0 0.5 2 km  
 WGS 1984 UTM Zone 34N 1:38000

Consequences within the AOI				
		Unit of measurement	Affected	Total in AOI
Burnt area		ha		6 193.1
Estimated population		Number of inhabitants	~ 1 600	~ 250 000
Built-up	Residential Buildings	No.	224	1 788
	Office buildings	No.	0	18
	Wholesale and retail trade buildings	No.	0	61
	Industrial buildings	No.	39	70
	Reservoirs, silos and warehouses	No.	0	13
	Public entertainment buildings	No.	0	16
	Museums and libraries	No.	0	1
	School, university and research buildings	No.	0	37
	Hospital or institutional care buildings	No.	0	5
	Other non-residential buildings	No.	1	1
	Non-residential farm buildings	No.	0	71
	Buildings used as places of worship and for religious activities	No.	0	22
	Other buildings not elsewhere classified	No.	0	8
	Hotel buildings	No.	0	11
	Communication buildings, stations, terminals and associated buildings	No.	0	25
Unclassified	No.	12	21 309	
Transportation	Airfield runways	ha	0.0	281.4
	Helipad	ha	0.0	0.3
	Airfield runways	km	0.0	1.9
	Highways	km	0.0	90.3
	Primary Road	km	0.0	19.8
	Secondary Road	km	10.0	160.1
	Local Road	km	34.9	1 788.2
	Cart Track	km	80.3	825.4
	Subway	km	0.0	4.0
	Long-distance railways	km	1.0	179.1
Facilities	Settling Basin	ha	0.0	8.5
	Constructions for mining or extraction	ha	19.8	208.6
	Power plant constructions	ha	1.3	3.3
	Sport and recreation constructions	ha	1.3	173.2
	Other civil engineering works not elsewhere classified	ha	0.0	253.1
	Long-distance pipelines, communication and electricity lines	km	9.6	151.5
	Dams	km	0.0	0.0
Land use	Shrub and/or herbaceous vegetation association	ha	3 354.8	14 614.8
	Forests	ha	1 971.2	13 277.2
	Pastures	ha	263.7	633.3
	Permanent crops	ha	200.1	215.8
	Other	ha	196.0	10 729.1
	Open spaces with little or no vegetation	ha	171.8	1 370.8
	Heterogeneous agricultural areas	ha	35.5	3 286.5
	Arable land	ha	0.0	447.5

**Disclaimer:**

Full disclaimer and other helpful information available in the online manual:  
<https://emergency.copernicus.eu/mapping/ems/online-manual-rapid-mapping-products>  
 © European Union / Copernicus Emergency Management Service

**Data access:**

All data displayed on the map(s), as well as the Physiography and Land Use - Land Cover layers, are available in the Crisis Information Package and the Base Layer Package (for reference data). The table above is available in editable format in the Crisis Information Package. All products and data are also available for download on the portal.

Access to the portal



PROGRAMME OF THE EUROPEAN UNION

