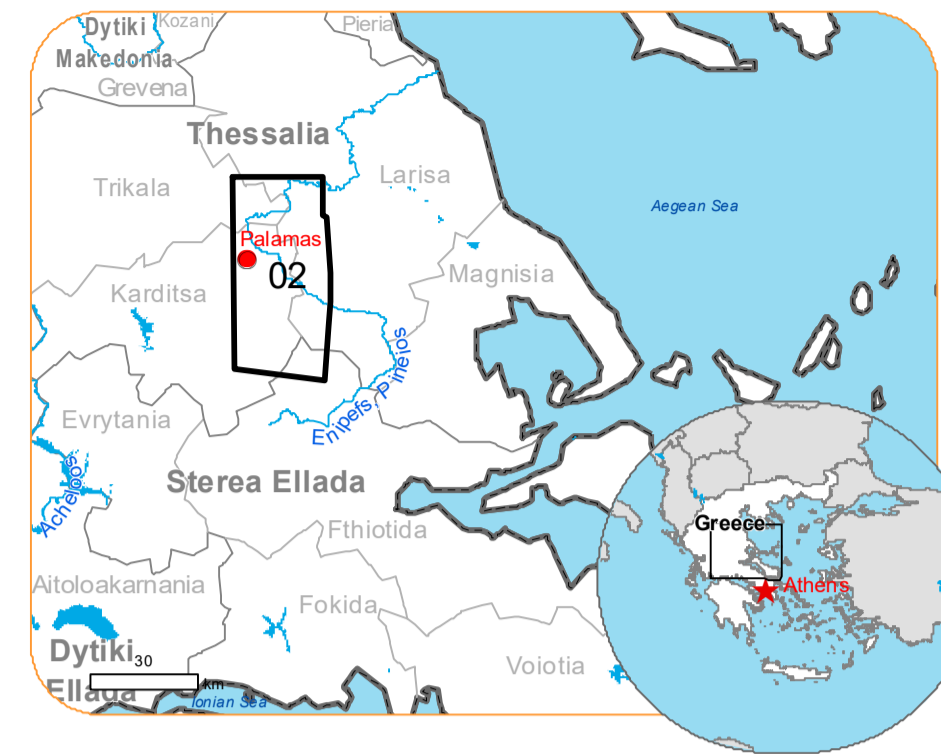




Situation as of 12/09/2023 08:54 UTC
Delineation MONIT01 - Overview map 01



Flooded area 12,129.4 ha
 Flood trace 51,549.2 ha
 Previous flooded area 35,835.9 ha
 Potentially affected population ~ 13000

Potentially Affected Built-up and Transportations

Railway 110.6 km
 Road 737.1 km
 Built-Up 1,746.4 ha

- Crisis Information**
- Flooded Area
 - Flooded Area (08/09/2023 09:05 UTC)
 - Flood trace
 - Area of Interest
 - Image Footprint
 - Not Analysed
 - Residential
 - Non residential
- General Information**
- School, university and research buildings
 - Hospital or institutional care buildings
 - Lake
 - Land Subject to Inundation
 - Reservoir
 - Aquatic infrastructure
 - Dam
 - Mining or extraction site
 - Sport and recreation constructions
- Hydrography**
- River
 - Stream
 - Highway
 - Main road
 - Local road
 - Railway
- Administrative boundaries**
- Province
 - Municipality
 - Long-distance pipelines or lines
 - Dam
- Placenames**
- Placename
- Facilities**
- Long-distance pipelines or lines
 - Dam
 - Mining or extraction site
 - Power plant
 - Sport and recreation constructions

Event:
Due to extreme rainfall in Thessaly Region, extended floods occurred in Magnesia Regional Unit, mostly around the city of Volos and coastal areas of Pelion mountain peninsula. Extreme rainfall is ongoing and according to the forecast of the National Meteorological Service the rainfall will continue until tomorrow afternoon. One person is missing, and one died, and many cars were drifted away due to the flooding. Local Fire Service received many calls for help to pump water from flooded buildings and rescue people trapped by the rising waters. Copernicus EMS Rapid Mapping is requested to provide initial rough estimation, flood extent and monitoring of the event for the emergency mapping.

Data sources and analysis: Pre-event image: Sentinel-2A/B (2023) (acquired on 31/08/2023 at 09:15 UTC, resolution 10.0 m).
Post-event image: SPOT6/7 © Airbus DS (2023), (acquired on 12/09/2023 at 08:54 UTC, resolution 1.5 m). This image is used as background image.
[GeoEye1] © Maxar Technologies, Inc. (2023), (acquired on 10/09/2023 at 09:05 UTC, resolution 2 m).
All images are provided under COPERNICUS by the European Union and ESA, all rights reserved.

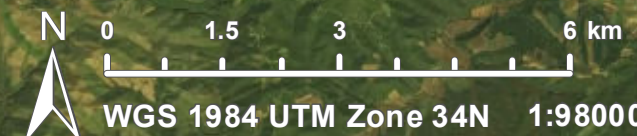
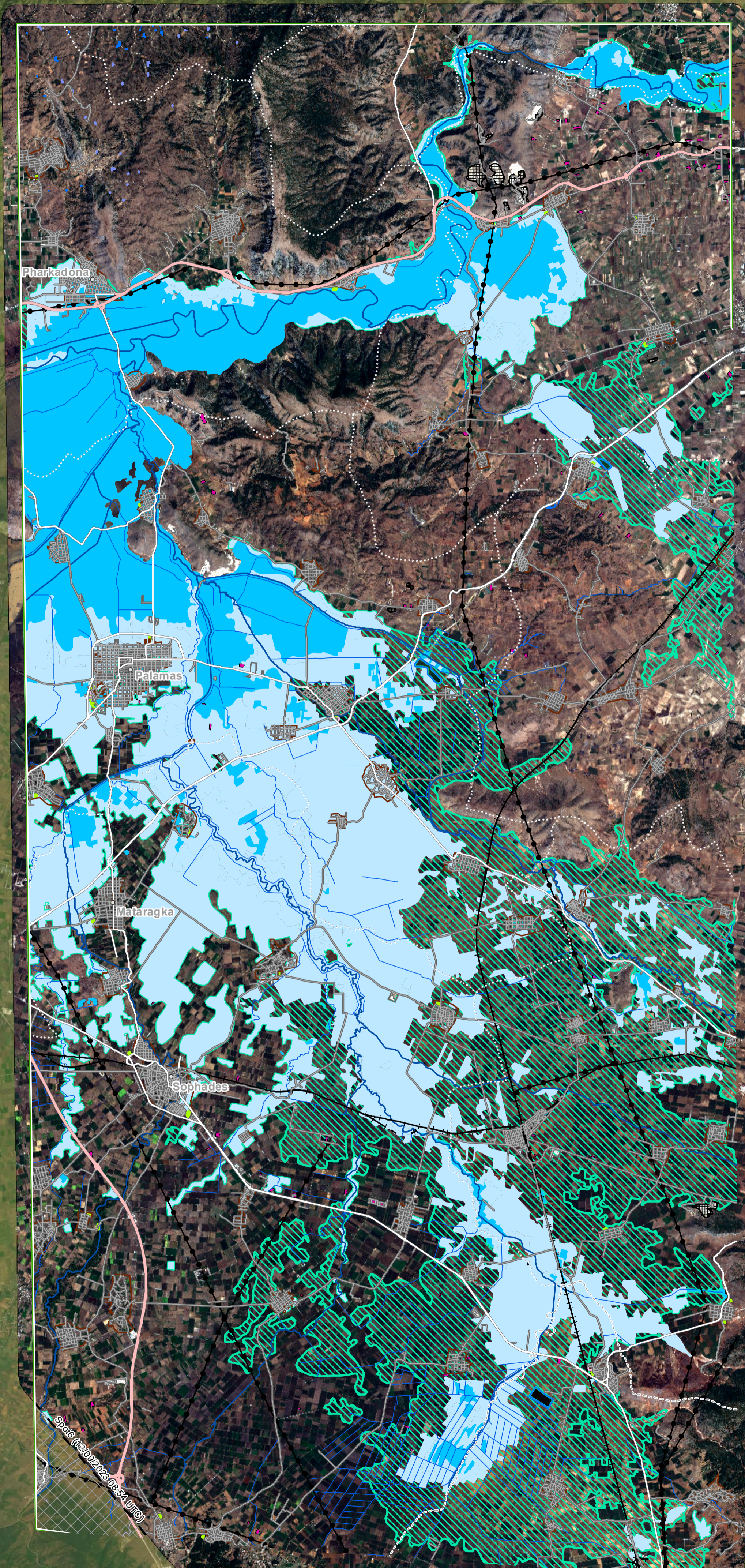
Base vector layers: OpenStreetMap © OpenStreetMap contributors (2023), Wikimapia.org, GeoNames 2015, Corine Land Cover (CLC) 2018, EuroBoundaryMap 2017 © EuroGeographics.
Inset maps: JRC 2013, GISCO 2010 © EuroGeographics, Natural Earth 2012, CCM River DB © EUJRC2007, GeoNames 2015.

Population data: GHS Population Grid © European Commission, 2023
https://ghsl.jrc.ec.europa.eu/ghs_pop2023.php
Digital Elevation Model: SRTM (30 m) (NASA/USGS)

The thematic layer has been derived from post-event satellite image by means of visual interpretation.

Map produced by Telespazio Iberica released by SERTIT on the 13/09/2023.

Details on this activation and service conditions available through the QR code or at the link:
<https://rapidmapping.emergency.copernicus.eu/EMSR692>



Consequences within the AOI				
		Unit of measurement	Affected	Total in AOI
Flooded area		ha		12,129.4
Flood trace		ha		51,549.2
Previous flooded area		ha		35,835.9
Estimated population		Number of inhabitants	~ 13,000	~ 39,000
Built-up	Residential Buildings	ha	1,685.4	4,335.1
	Office buildings	ha	0.0	2.6
	Wholesale and retail trade buildings	ha	0.0	0.6
	Industrial buildings	ha	54.8	89.3
	School, university and research buildings	ha	1.0	10.1
	Hospital or institutional care buildings	ha	0.0	0.3
	Cemetery	ha	5.2	13.5
Transportation	Highways	km	23.6	102.2
	Primary Road	km	23.3	65.8
	Secondary Road	km	110.9	173.8
	Local Road	km	579.2	1,435.4
	Long-distance railways	km	110.6	144.8
Facilities	Settling Basin	ha	0.9	0.9
	Dams	ha	0.3	0.3
	Constructions for mining or extraction	ha	0.0	146.9
	Power plant constructions	ha	21.2	111.6
	Sport and recreation constructions	ha	12.3	35.3
	Long-distance pipelines, communication and electricity lines	km	46.7	153.8
	Dams	km	0.1	0.1
Land use	Arable land	ha	59,101.7	107,864.0
	Other	ha	2,306.3	4,947.1
	Pastures	ha	1,561.7	2,072.3
	Heterogeneous agricultural areas	ha	305.5	731.8
	Shrub and/or herbaceous vegetation association	ha	241.5	27,565.7
	Inland wetlands	ha	122.4	127.8
	Forests	ha	25.6	378.5
	Permanent crops	ha	13.4	273.6
	Open spaces with little or no vegetation	ha	0.5	112.9

Disclaimer:

Full disclaimer and other helpful information available in the online manual:
<https://emergency.copernicus.eu/mapping/ems/online-manual-rapid-mapping-products>
 © European Union / Copernicus Emergency Management Service

Data access:

All data displayed on the map(s), as well as the Physiography and Land Use - Land Cover layers, are available in the Crisis Information Package and the Base Layer Package (for reference data). The table above is available in editable format in the Crisis Information Package. All products and data are also available for download on the portal.

Access to the portal



PROGRAMME OF THE EUROPEAN UNION

