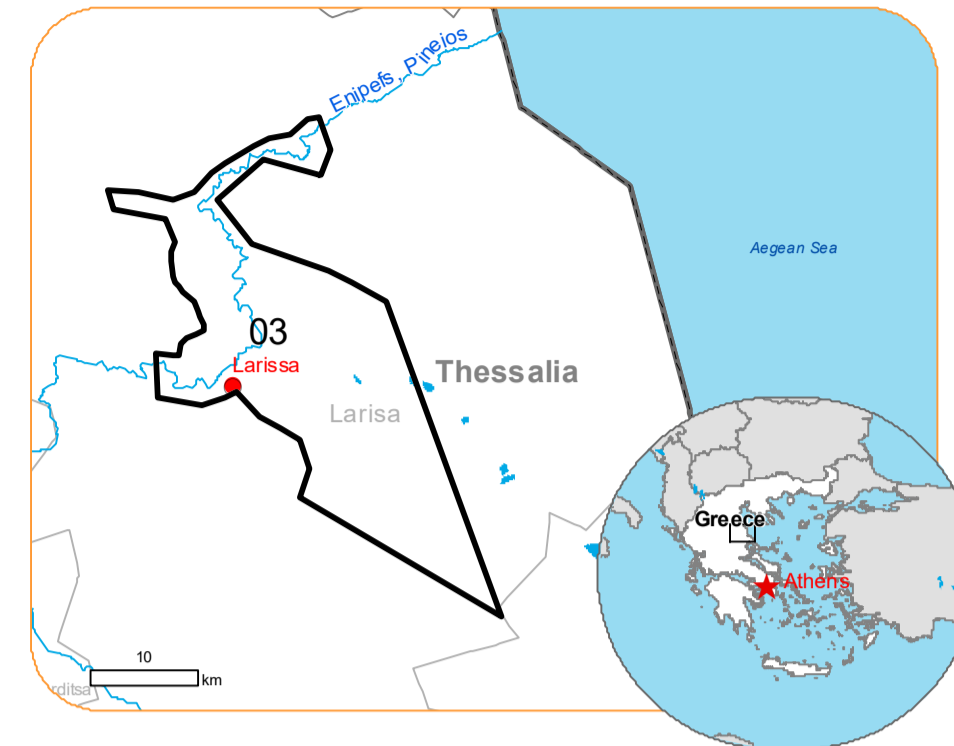




Situation as of 19/09/2023 09:33 UTC
Delineation MONIT05 - Overview map 01



Dike Breach 2 No
Flooded area 3,163.3 ha
Flood trace 11,474.0 ha
Previous flooded area 4,516.0 ha

Potentially affected population
~ 12000

Potentially Affected Built-up, Transportations and Facilities

Built-Up 252.2 ha
Road 256.1 km
Railway 20.8 km
Airport 1.1 km / 4.1 ha
Facilities 41.5 km / 101.7 ha

Crisis Information	Built-Up Area	Other
Dike breach	Residential	Mining or extraction site
Flooded Area	Non residential	Power plant
Flood trace	School, university and research buildings	Sport and recreation constructions
Previous Flooded Area (17/09/2023 09:04 UTC)	Hospital or institutional care buildings	Dump Site
Area of Interest	Military	Water or Aquatic infrastructure
Not Analysed	Hydrography	Dam
Administrative boundaries	River	Transportation
Municipality	Stream	Highway
Placenames	Waterfall	Main road
Placename	Lake	Local road
	Reservoir	Railway
	Facilities	Airfield runway
	Long-distance pipelines or lines	Airfield
	Local pipelines or lines	Helipad
	Dam	

Event:
Due to extreme rainfall in Thessaly Region, extended floods occurred in Magnesia Regional Unit, mostly around the city of Volos and coastal areas of Pelion mountain peninsula. Extreme rainfall is ongoing and according to the forecast of the National Meteorological Service the rainfall will continue until tomorrow afternoon. One person is missing, and one died, and many cars were drifted away due to the flooding. Local Fire Service received many calls for help to pump water from flooded buildings and rescue people trapped by the rising waters. Copernicus EMS Rapid Mapping is requested to provide initial rough estimation, flood extent and monitoring of the event for the emergency mapping.

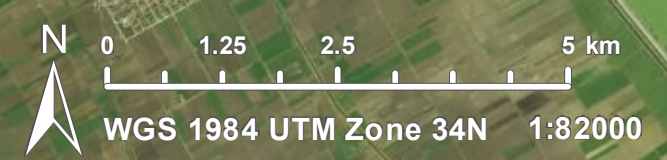
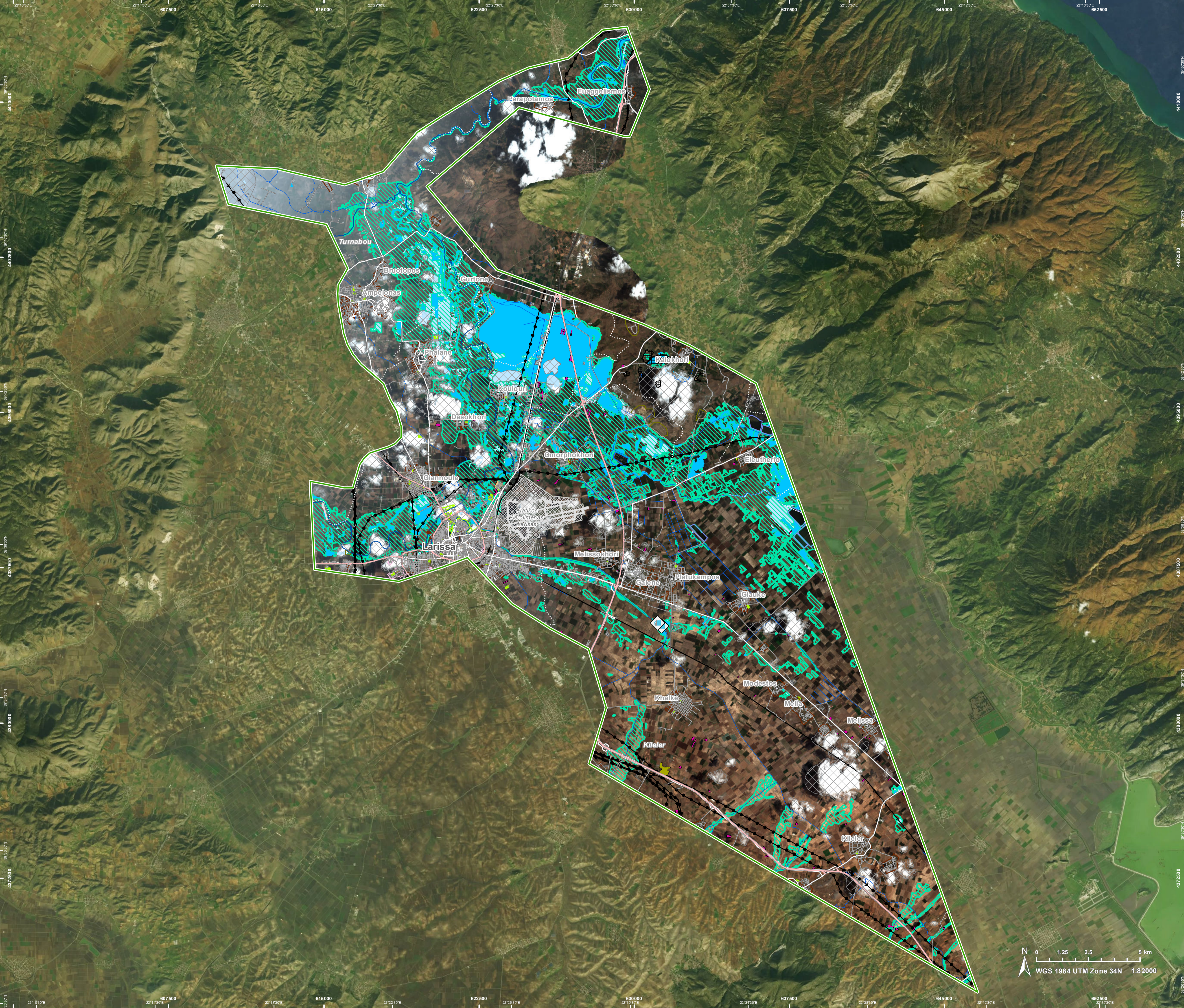
Data sources and analysis: Pre-event image: Sentinel-2A/B (2023) (acquired on 31/08/2023 at 09:15 UTC, resolution 10.0 m).
Post-event image: WorldView-2 © Maxar Technologies, Inc. (2023), (acquired on 19/09/2023 at 09:33 UTC, resolution 2.0 m). This image is used as background image.
SPOT6/7 © Airbus DS (2023), (acquired on 17/09/2023 at 09:04 UTC, resolution 1.5 m).

All images are provided under COPERNICUS by the European Union and ESA, all rights reserved.

Base vector layers: OpenStreetMap © OpenStreetMap contributors (2023), Wikimedia.org, GeoNames 2015, Corine Land Cover (CLC) 2018, EuroBoundaryMap 2017 © EuroGeographics.
Inset maps: JRC 2013, GISCO 2010 © EuroGeographics, Natural Earth 2012, CCM River DB © EUJRC2007, GeoNames 2015.
Population data: GHS Population Grid © European Commission, 2023 https://ghsl.jrc.ec.europa.eu/ghs_pop2023.php

The thematic layer has been derived from post-event satellite image by means of photo-interpretation.

Map produced by CLS released by e-GEOS on the 19/09/2023.
Details on this activation and service conditions available through the QR code or at the link: <https://rapidmapping.emergency.copernicus.eu/EMSR692>



Consequences within the AOI				
		Unit of measurement	Affected	Total in AOI
Flood trace		ha		11,474.0
Flooded area		ha		3,163.3
Previous flooded area		ha		4,516.0
Dike breach		No.		2
Estimated population		Number of inhabitants	~ 12,000	~ 120,000
Built-up	Residential Buildings	ha	158.2	2,503.6
	Office buildings	ha	19.7	51.3
	Wholesale and retail trade buildings	ha	0.0	1.8
	Industrial buildings	ha	68.9	257.9
	School, university and research buildings	ha	0.0	55.1
	Hospital or institutional care buildings	ha	0.0	1.4
	Military	ha	4.9	1,066.5
	Cemetery	ha	0.4	4.7
Transportation	Airfield runways	ha	4.1	873.1
	Helipad	ha	0.0	0.2
	Airfield runways	km	1.1	28.3
	Highways	km	32.2	128.4
	Primary Road	km	11.1	76.7
	Secondary Road	km	24.1	132.8
	Local Road	km	188.6	1,022.9
Facilities	Long-distance railways	km	20.8	83.4
	Settling Basin	ha	11.7	11.8
	Dams	ha	0.3	0.3
	Constructions for mining or extraction	ha	33.6	79.8
	Power plant constructions	ha	29.0	85.7
	Sport and recreation constructions	ha	27.2	116.7
	Other civil engineering works not elsewhere classified	ha	0.0	18.2
	Long-distance pipelines, communication and electricity lines	km	41.2	129.3
Land use	Local pipelines and cables	km	0.0	0.1
	Dams	km	0.3	0.3
	Arable land	ha	12,269.5	41,301.0
	Other	ha	1,337.4	6,269.2
	Heterogeneous agricultural areas	ha	547.7	2,940.4
	Pastures	ha	225.2	638.6
	Open spaces with little or no vegetation	ha	110.9	236.1
Inland wetlands	ha	72.9	191.4	
Shrub and/or herbaceous vegetation association	ha	59.7	3,199.7	
Permanent crops	ha	14.1	688.5	

Disclaimer:

Full disclaimer and other helpful information available in the online manual:
<https://emergency.copernicus.eu/mapping/ems/online-manual-rapid-mapping-products>
 © European Union / Copernicus Emergency Management Service

Data access:

All data displayed on the map(s), as well as Land Use - Land Cover layer(s), are available in the Crisis Information Package and the Base Layer Package (for reference data). The table above is available in editable format in the Crisis Information Package. All products and data are also available for download on the portal.

