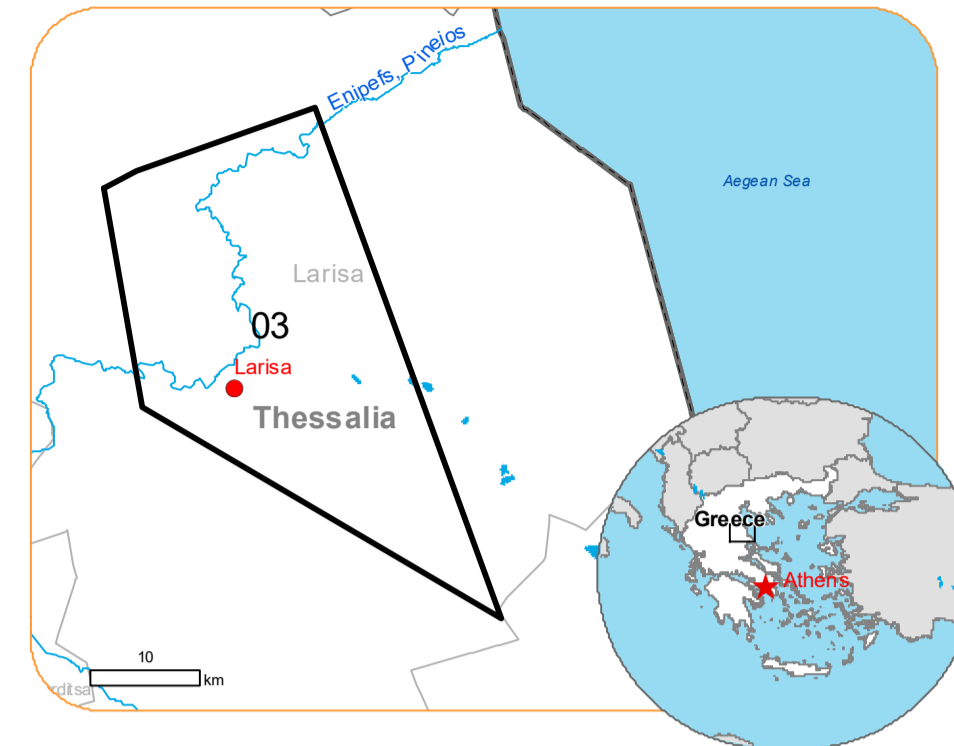




**Situation as of 10/09/2023 09:05 UTC**  
 Delineation - Overview map 01



**Flooded area 15,531.7 ha**  
**Flood trace 739.1 ha**

**Potentially affected population ~ 15000**

**Potentially Affected Built-up, Transportations and Facilities**

Built-Up 302.0 ha	Road 746.1 km	Railway 20.8 km
Airport 1.1 km 4.1 ha	Facilities 44.4 km 133.7 ha	

<b>Crisis Information</b>	<b>Hydrography</b>	<b>Transportation</b>
Flooded Area	River	Highway
Flood trace	Stream	Main road
<b>General Information</b>	Waterfall	Local road
Area of Interest	Lake	Railway
Image Footprint	Reservoir	Airfield runway
Not Analysed	<b>Facilities</b>	Airfield
<b>Administrative boundaries</b>	Long-distance pipelines or lines	Helipad
Municipality	Local pipelines or lines	
<b>Placenames</b>	Dam	
Placename	Mining or extraction site	
<b>Built-Up Area</b>	Power plant	
Residential	Sport and recreation constructions	
Non residential	Dump Site	
School, university and research buildings	Water or Aquatic infrastructure	
Hospital or institutional care buildings	Dam	
Military		

**Event:**  
 Due to extreme rainfall in Thessaly Region, extended floods occurred in Magnesia Regional Unit, mostly around the city of Volos and coastal areas of Pelion mountain peninsula. Extreme rainfall is ongoing and according to the forecast of the National Meteorological Service the rainfall will continue until tomorrow afternoon. One person is missing, and one died, and many cars were drifted away due to the flooding. Local Fire Service received many calls for help to pump water from flooded buildings and rescue people trapped by the rising waters. Copernicus EMS Rapid Mapping is requested to provide initial rough estimation, flood extent and monitoring of the event.

**Data sources and analysis:** Pre-event image: Sentinel-2A/B (2023) (acquired on 31/08/2023 at 09:15 UTC, resolution 10.0 m).  
 Post-event image: GeoEye © Maxar Technologies, Inc. (2023), (acquired on 10/09/2023 at 09:05 UTC, resolution 2.0 m). This image is used as background image.  
 All images are provided under COPERNICUS by the European Union and ESA, all rights reserved.

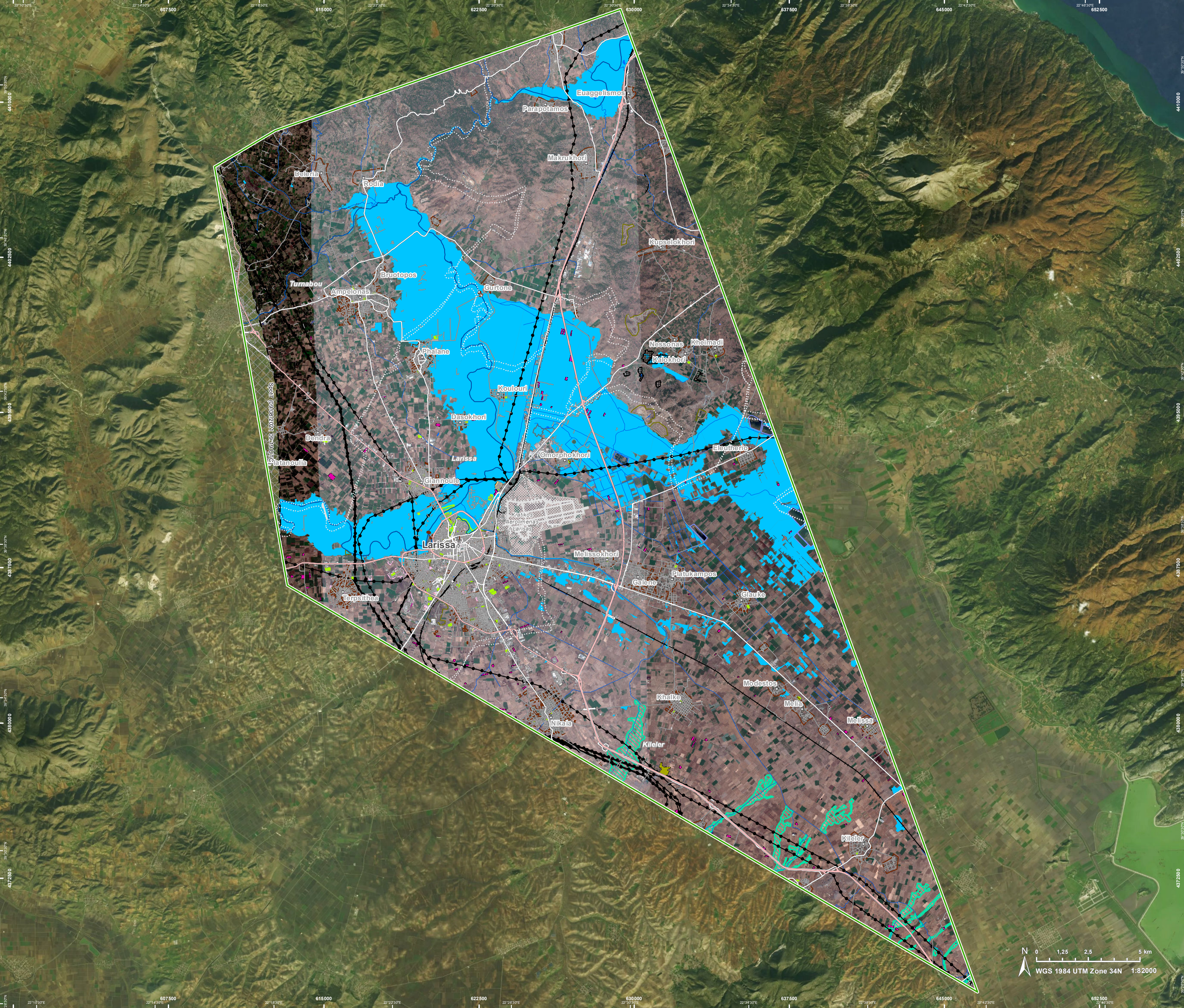
Base vector layers: OpenStreetMap © OpenStreetMap contributors (2023),  
 Wikimapia.org, GeoNames 2015, Copernicus Land Cover (CLC) 2018,  
 EuroBoundaryMap 2017 © EuroGeographics,  
 Inset maps: JRC 2013, GISCO 2010 © EuroGeographics, Natural Earth 2012, CCM River DB © EUJRC2007, GeoNames 2015.

Population data: GHS Population Grid © European Commission, 2023  
[https://ghsl.jrc.ec.europa.eu/ghs\\_pop2023.php](https://ghsl.jrc.ec.europa.eu/ghs_pop2023.php)

The thematic layer has been derived from post-event satellite image using a semi-automatic approach.

Map produced by CLS released by SERTIT on the 11/09/2023.

Details on this activation and service conditions available through the QR code or at the link:  
<https://rapidmapping.emergency.copernicus.eu/EMSR692>



Consequences within the AOI		Unit of measurement	Affected	Total in AOI
Flooded area		ha		15 531,7
Flood trace		ha		739,1
Estimated population	Number of inhabitants		~ 15 000	~ 180 000
Built-up	Residential Buildings	ha	184,7	3 793,1
	Office buildings	ha	23,0	111,3
	Wholesale and retail trade buildings	ha	0,0	3,5
	Industrial buildings	ha	85,9	562,7
	School, university and research buildings	ha	0,4	81,7
	Hospital or institutional care buildings	ha	0,0	23,0
	Military	ha	7,6	1 245,6
	Cemetery	ha	0,4	18,6
Transportation	Airfield runways	ha	4,1	873,1
	Helipad	ha	0,0	0,4
	Airfield runways	km	1,1	28,3
	Highways	km	38,9	195,3
	Primary Road	km	11,6	105,3
	Secondary Road	km	24,9	197,9
	Local Road	km	215,3	1 613,2
	Cart Track	km	455,4	2 121,4
Facilities	Long-distance railways	km	20,8	138,1
	Settling Basin	ha	11,7	12,6
	Dams	ha	0,3	0,3
	Constructions for mining or extraction	ha	33,5	79,8
	Power plant constructions	ha	30,9	133,4
	Sport and recreation constructions	ha	57,2	169,4
	Other civil engineering works not elsewhere classified	ha	0,0	18,2
	Long-distance pipelines, communication and electricity lines	km	44,1	235,1
Land use	Local pipelines and cables	km	0,0	0,1
	Dams	kms	0,3	0,3
	Arable land	ha	12 533,3	47 100,0
	Other	ha	1 597,0	8 399,7
	Heterogeneous agricultural areas	ha	535,4	8 457,2
	Pastures	ha	266,8	744,6
	Inland wetlands	ha	152,9	223,2
	Open spaces with little or no vegetation	ha	121,9	424,7
Shrub and/or herbaceous vegetation association	ha	65,9	4 988,6	
	Permanent crops	ha	0,5	1 401,6

**Disclaimer:**

Full disclaimer and other helpful information available in the online manual:  
<https://emergency.copernicus.eu/mapping/ems/online-manual-rapid-mapping-products>  
 © European Union / Copernicus Emergency Management Service

**Data access:**

All data displayed on the map(s), as well as Land Use - Land Cover layer(s), are available in the Crisis Information Package and the Base Layer Package (for reference data). The table above is available in editable format in the Crisis Information Package. All products and data are also available for download on the portal.

Access to the portal



PROGRAMME OF THE EUROPEAN UNION

