



Situation as of 14/09/2023 08:38 UTC
Delineation - Overview map 01



Flooded area 13,566.2 ha
Flood trace 3,636.7 ha
Previous flooded area 15,088.2 ha
Potentially affected population ~ 950

Potentially Affected Built-up and Transportations

Road 447.2 km
Airport 8.7 km
Railway 5.3 km
Built-Up 245.4 ha

Crisis Information		Hydrography	
	Flooded Area		River
	Flood trace		Stream
	Previous Flooded Area (12/09/2023 08:53 UTC)		Lake
	Area of Interest		Land Subject to Inundation
	Image Footprint		Open Water
	Not Analysed		Reservoir
	Region		River
	Municipality		Long-distance pipelines or lines
	Placename		Local pipelines or lines
	Residential		Dam
	Non residential		Mining or extraction site
	Military		Power plant
	Residential		Sport and recreation constructions
	Reservoirs, silos and warehouses		Water or Aquatic
	School, university and research buildings		Dam
	Unclassified		Highway
			Main road
			Local road
			Track
			Railway
			Airfield runway
			Airfield

Event:
Due to extreme rainfall in Thessaly Region, extended floods occurred in Magnesia Regional Unit, mostly around the city of Volos and coastal areas of Pelion mountain peninsula. Extreme rainfall is ongoing and according to the forecast of the National Meteorological Service the rainfall will continue until tomorrow afternoon. One person is missing, and one died, and many cars were drifted away due to the flooding. Local Fire Service received many calls for help to pump water from flooded buildings and rescue people trapped by the rising waters. Copernicus EMS Rapid Mapping is requested to provide initial rough estimation, flood extent and monitoring of the event for the emergency mapping.

Data sources and analysis: Pre-event image: Sentinel-2A/B (2023) (acquired on 31/08/2023 at 09:15 UTC, resolution 10.0 m).
Post-event image: SPOT6 @ Airbus DS (2023), (acquired on 14/09/2023 at 08:38 UTC, resolution 1.5 m). This image is used as background image.
SPOT6 @ Airbus DS (2023), (acquired on 12/09/2023 at 08:53 UTC, resolution 1.5 m).
All images are provided under COPERNICUS by the European Union and ESA, all rights reserved.

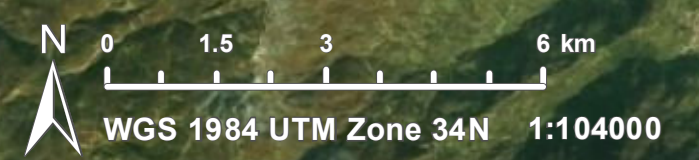
Base vector layers: OpenStreetMap © OpenStreetMap contributors (current year), Wikimapia.org, GeoNames 2015, Corine Land Cover (CLC) 2018, EuroBoundaryMap 2017 © EuroGeographics.
Inset maps: JRC 2013, GISCO 2010 © EuroGeographics, Natural Earth 2012, CCM River DB © EUJRC2007, GeoNames 2015.

Population data: GHS Population Grid © European Commission, 2023
https://ghsl.jrc.ec.europa.eu/ghs_pop2023.php

The thematic layer has been derived from post-event satellite image using a semi-automatic approach AND by means of visual interpretation.

Map produced by GAF AG released by SERTIT on the 14/09/2023.

Details on this activation and service conditions available through the QR code or at the link:
<https://rapidmapping.emergency.copernicus.eu/EMSR692>



Consequences within the AOI				
		Unit of measurement	Affected	Total in AOI
Flooded area		ha		13,566.2
Flood trace		ha		3,636.7
Previous flooded area		ha		15,088.2
Estimated population	Number of inhabitants		~ 950	~ 12,000
Built-up	Residential Buildings	ha	67.2	1,127.1
	Office buildings	ha	0.0	1.0
	Industrial buildings	ha	0.0	17.9
	Military	ha	176.2	176.2
	Cemetery	ha	0.0	1.3
	Hotel buildings	ha	0.0	1
	Communication buildings, stations, terminals and associated buildings	ha	0.0	1
	Unclassified	ha	2	79
Transportation	Airfield runways	ha	176.2	176.2
	Airfield runways	km	8.7	8.7
	Highways	km	0.1	26.8
	Primary Road	km	3.2	30.4
	Secondary Road	km	13.7	104.7
	Local Road	km	54.1	407.9
	Cart Track	km	376.2	833.7
	Long-distance railways	km	5.3	52.2
Facilities	Long-distance pipelines, communication and electricity lines	km	2.7	15.5
	Local pipelines and cables	km	0.0	0.0
	Dams	km	0.0	8.0
Land use	Arable land	ha	15,301.0	25,405.1
	Other	ha	780.3	7,318.7
	Pastures	ha	337.9	509.9
	Coastal wetlands	ha	261.5	563.8
	Inland wetlands	ha	239.6	247.7
	Heterogeneous agricultural areas	ha	164.0	2,407.3
	Shrub and/or herbaceous vegetation association	ha	53.0	9,902.4
	Permanent crops	ha	42.1	2,046.7
	Forests	ha	17.5	446.2
	Open spaces with little or no vegetation	ha	6.1	90.4

Disclaimer:

Full disclaimer and other helpful information available in the online manual:
<https://emergency.copernicus.eu/mapping/ems/online-manual-rapid-mapping-products>
 © European Union / Copernicus Emergency Management Service

Data access:

All data displayed on the map(s), as well as Land Use - Land Cover layer(s), are available in the Crisis Information Package and the Base Layer Package (for reference data). The table above is available in editable format in the Crisis Information Package. All products and data are also available for download on the portal.

Access to the portal



PROGRAMME OF THE EUROPEAN UNION

