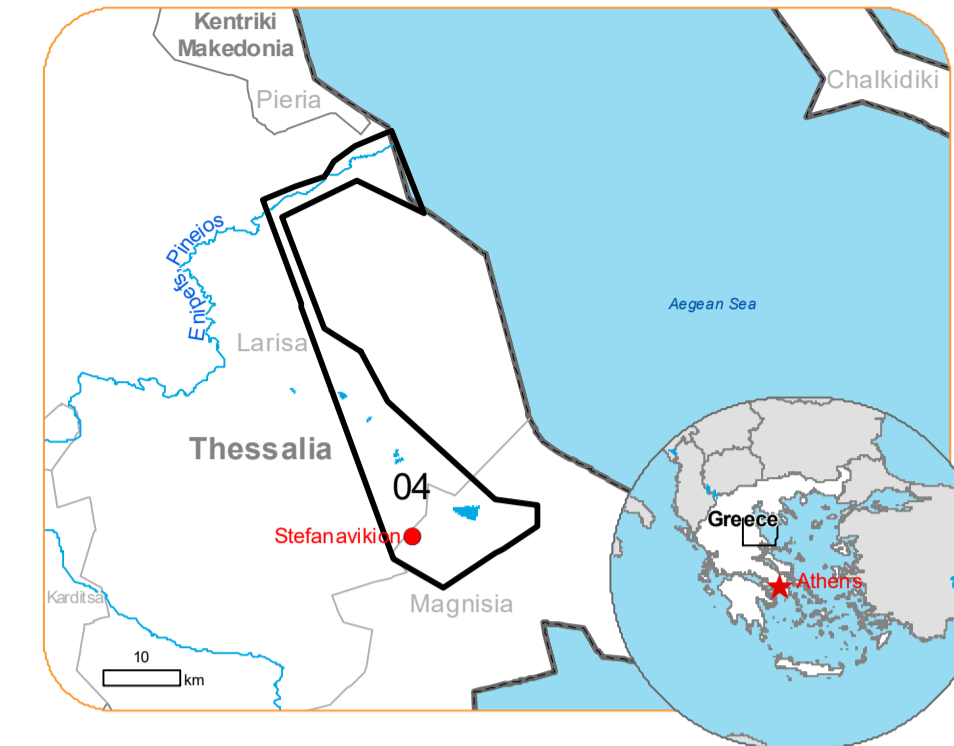




Situation as of 19/09/2023 09:33 UTC
Delineation MONIT04 - Overview map 01



Flooded area 9,579.1 ha
Flood trace 2,971.5 ha
Previous flooded area 12,349.1 ha
Potentially affected population ~ 600

Potentially Affected Built-up and Transportations
Road 313.4 km
Airport 4.6 km
Built-Up 82.2 ha

Crisis Information	Hydrography
Flooded Area	River
Flood trace	Stream
Previous Flooded Area (17/09/2023 09:04 UTC)	Lake
Area of Interest	Land Subject to Inundation
Not Analysed	Open Water
Region	Reservoir
Municipality	River
Placename	Facilities
Residential	Long-distance pipelines or lines
Non residential	Local pipelines or lines
Military	Dam
Residential	Mining or extraction site
Non residential	Power plant
Reservoirs, silos and warehouses	Sport and recreation constructions
School, university and research buildings	Water or Aquatic infrastructure
Unclassified	Dam
	Transportation
	Highway
	Main road
	Local road
	Track
	Railway
	Airfield runway
	Airfield

Event:
Due to extreme rainfall in Thessaly Region, extended floods occurred in Magnesia Regional Unit, mostly around the city of Volos and coastal areas of Pelion mountain peninsula. Extreme rainfall is ongoing and according to the forecast of the National Meteorological Service the rainfall will continue until tomorrow afternoon. One person is missing, and one died, and many cars were drifted away due to the flooding. Local Fire Service received many calls for help to pump water from flooded buildings and rescue people trapped by the rising waters. Copemicus EMS Rapid Mapping is requested to provide initial rough estimation, flood extent and monitoring of the event for the emergency mapping.

Data sources and analysis: Pre-event image: Sentinel-2A/B (2023) (acquired on 31/08/2023 at 09:15 UTC, resolution 10.0 m).
Post-event image: WorldView-2 @ Maxar Technologies, Inc. (2023), (acquired on 19/09/2023 at 09:33 UTC, resolution 2.0 m). This image is used as background image. SPOT6 @ Airbus DS (2023), (acquired on 17/09/2023 at 09:04 UTC, resolution 1.5 m).
All images are provided under COPERNICUS by the European Union and ESA, all rights reserved.

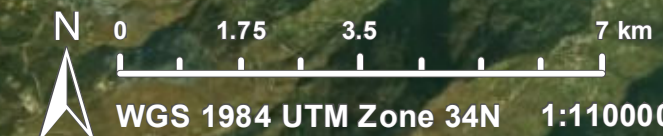
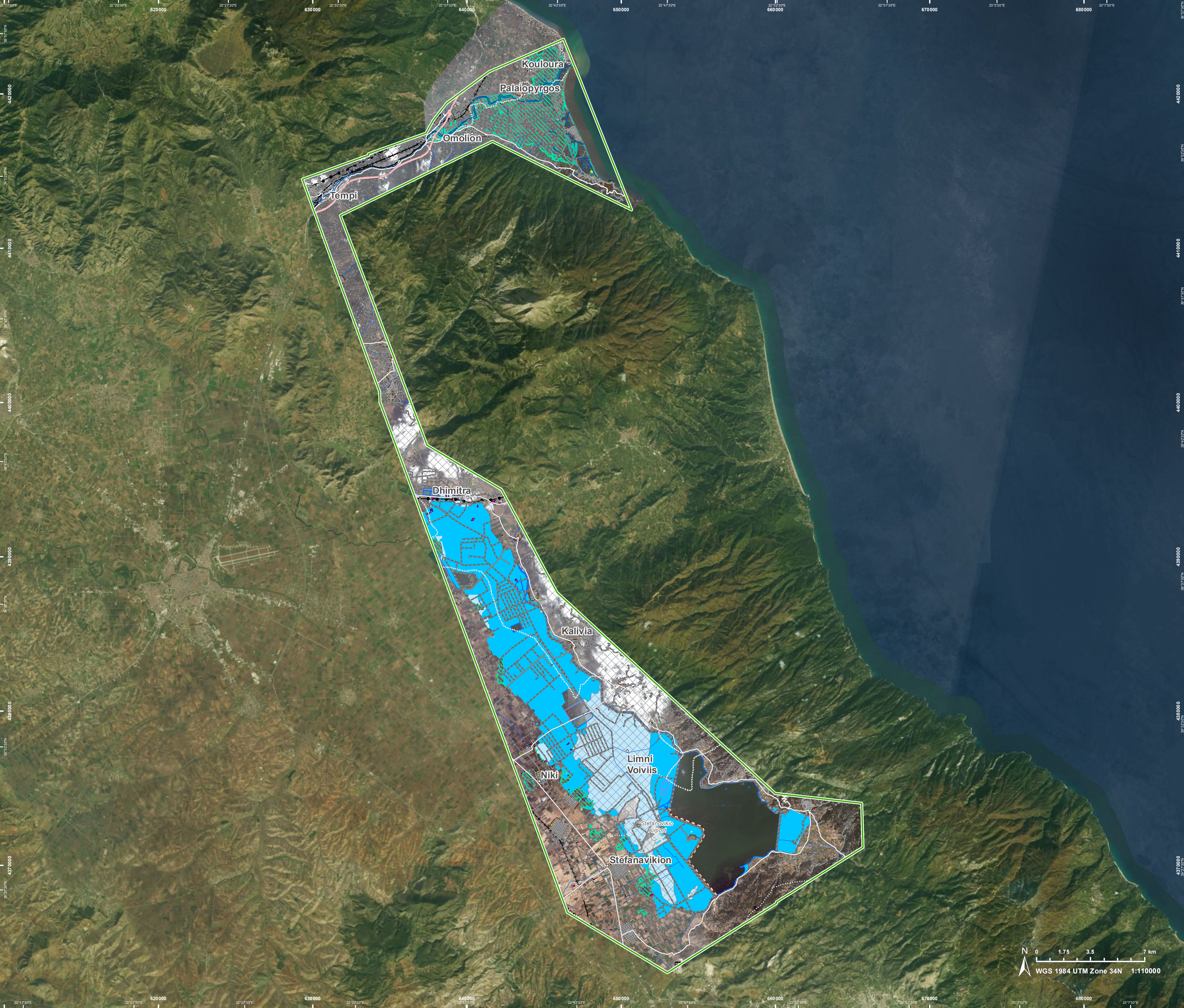
Base vector layers: OpenStreetMap © OpenStreetMap contributors (current year), Wikimapia.org, GeoNames 2015, Corine Land Cover (CLC) 2018, EuroBoundaryMap 2017 © EuroGeographics.
Inset maps: JRC 2013, GISCO 2010 © EuroGeographics, Natural Earth 2012, CCM River DB © EUJRC2007, GeoNames 2015.

Population data: GHS Population Grid © European Commission, 2023
https://ghsl.jrc.ec.europa.eu/ghs_pop2023.php

The thematic layer has been derived from post-event satellite image by means of visual interpretation.

Map produced by GAF AG released by e-GEOS on the 19/09/2023.

Details on this activation and service conditions available through the QR code or at the link:
<https://rapidmapping.emergency.copernicus.eu/EMSR692>



Consequences within the AOI				
		Unit of measurement	Affected	Total in AOI
Flooded area		ha		9,579.1
Flood trace		ha		2,971.5
Previous flooded area		ha		12,349.1
Estimated population		Number of inhabitants	~ 600	~ 12,000
Built-up	Residential Buildings	ha	3.7	1,127.1
	Office buildings	ha	0.0	1.0
	Industrial buildings	ha	0.0	17.9
	Military	ha	78.5	176.2
	Cemetery	ha	0.0	1.3
	Hotel buildings	ha	0.0	1
	Communication buildings, stations, terminals and associated buildings	ha	0.0	1
	Unclassified	ha	0.0	79
Transportation	Airfield runways	ha	78.5	176.2
	Airfield runways	km	4.6	8.7
	Highways	km	1.9	26.8
	Primary Road	km	0.5	30.4
	Secondary Road	km	7.7	104.7
	Local Road	km	33.1	407.9
	Cart Track	km	270.1	833.7
	Long-distance railways	km	0.0	52.2
Facilities	Long-distance pipelines, communication and electricity lines	km	0.7	15.5
	Local pipelines and cables	km	0.0	0.0
	Dams	km	0.0	8.0
Land use	Arable land	ha	11,063.1	25,405.1
	Pastures	ha	371.3	509.9
	Other	ha	351.3	7,318.7
	Coastal wetlands	ha	259.5	563.8
	Inland wetlands	ha	187.8	247.7
	Forests	ha	118.0	446.2
	Heterogeneous agricultural areas	ha	94.5	2,407.3
	Permanent crops	ha	60.1	2,046.7
	Shrub and/or herbaceous vegetation association	ha	38.9	9,902.4
	Open spaces with little or no vegetation	ha	6.1	90.4

Disclaimer:

Full disclaimer and other helpful information available in the online manual:
<https://emergency.copernicus.eu/mapping/ems/online-manual-rapid-mapping-products>
 © European Union / Copernicus Emergency Management Service

Data access:

All data displayed on the map(s), as well as Land Use - Land Cover layer(s), are available in the Crisis Information Package and the Base Layer Package (for reference data). The table above is available in editable format in the Crisis Information Package. All products and data are also available for download on the portal.

Access to the portal



PROGRAMME OF THE EUROPEAN UNION

