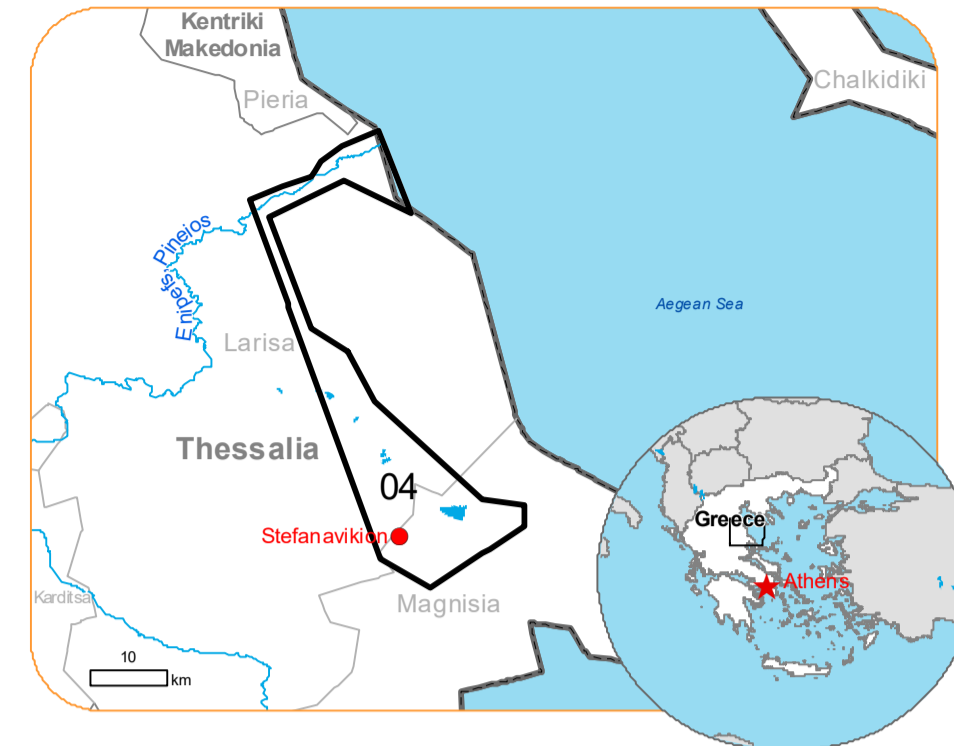




Situation as of 10/09/2023 10:09 UTC  
Delineation - Overview map 01



Flood trace 8.9 ha  
Flooded area 15,691.0 ha  
Potentially affected population ~ 1200

Potentially Affected Built-up and Transportations

Built-Up	298.5 ha	Road	403.5 km	Airport	7.1 km
					146.6 ha

Railway 4.1 km

- Crisis Information**
  - Flooded Area
  - Flood trace
- General Information**
  - Area of Interest
- Administrative boundaries**
  - Municipality
- Placenames**
  - Placename
- Built-Up Area**
  - Residential
  - Non residential
  - Military
- Built-Up Area**
  - Non residential
  - Unclassified
- Hydrography**
  - River
  - Stream
- Lake**
  - Lake
- Land Subject to Inundation**
  - Open Water
- Reservoir**
  - Reservoir
- Facilities**
  - Long-distance pipelines or lines
  - Local pipelines or lines
  - Dam
- Transportation**
  - Highway
  - Main road
  - Local road
  - Track
  - Railway
  - Airfield runway
- Transportation**
  - Airfield

**Event:**  
Due to extreme rainfall in Thessaly Region, extended floods occurred in Magnisia Regional Unit, mostly around the city of Volos and coastal areas of Pelion mountain peninsula. Extreme rainfall is ongoing and according to the forecast of the National Meteorological Service the rainfall will continue until tomorrow afternoon. One person is missing, and one died, and many cars were drifted away due to the flooding. Local Fire Service received many calls for help to pump water from flooded buildings and rescue people trapped by the rising waters. Copernicus EMS Rapid Mapping is requested to provide initial rough estimation, flood extent and monitoring of the event for the emergency mapping.

**Data sources and analysis:** Pre-event image: Sentinel-2A/B (2023) (acquired on 31/08/2023 at 09:15 UTC, resolution 10.0 m).  
Post-event image: [GeoEye1] © Maxar Technologies, Inc. (2023), (acquired on 10/09/2023 at 10:09 UTC, resolution 2.0 m). This image is used as background image.  
All images are provided under COPENICUS by the European Union and ESA, all rights reserved.

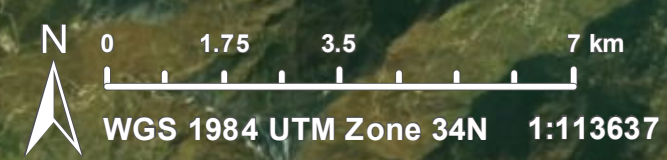
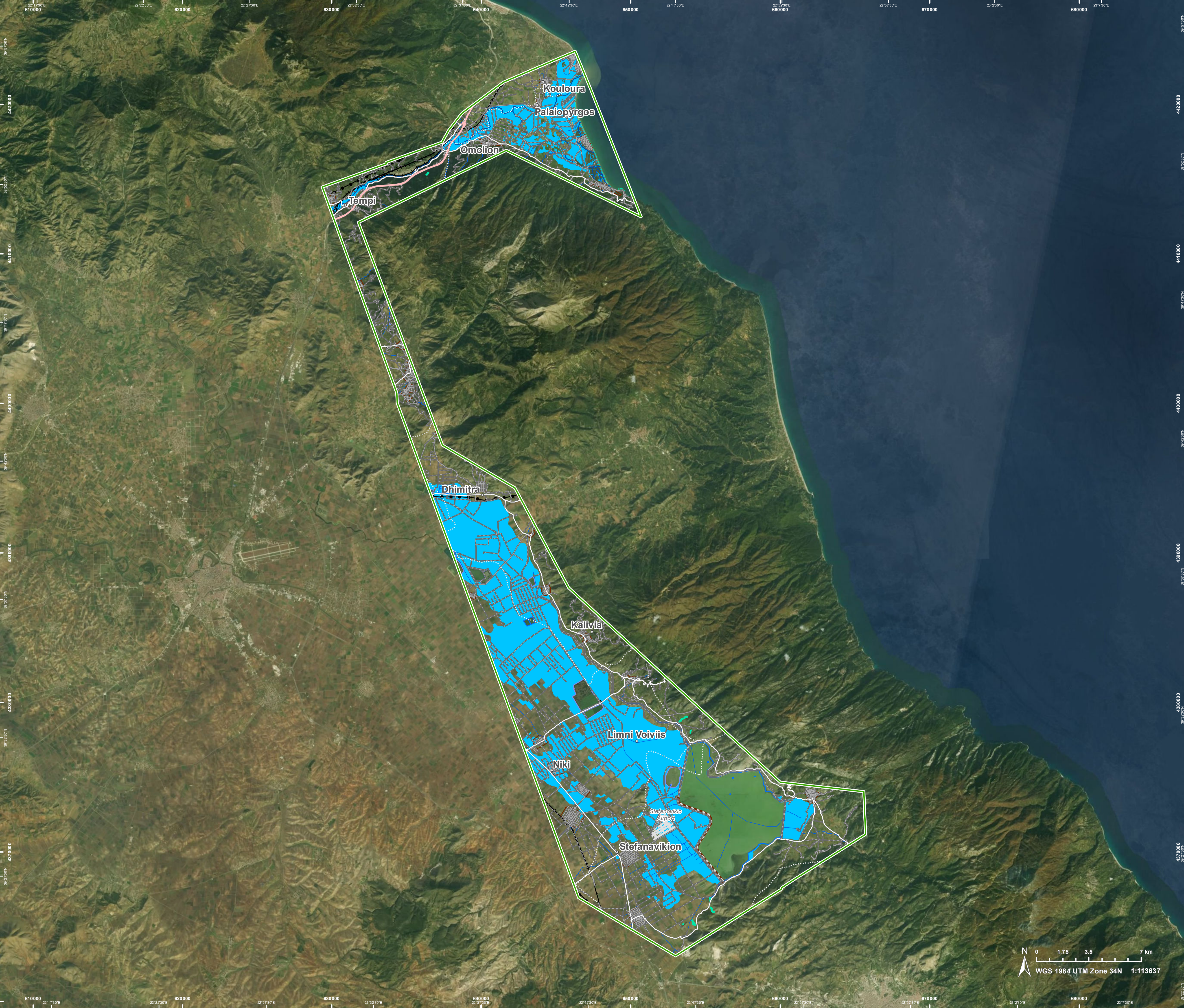
Base vector layers: OpenStreetMap © OpenStreetMap contributors (current year), Wikipedia.org, GeoNames 2015, Corine Land Cover (CLC) 2018, EuroBoundaryMap 2017 © EuroGeographics.  
Inset maps: JRC 2013, GISCO 2010 © EuroGeographics, Natural Earth 2012, CCM River DB © EUJRC2007, GeoNames 2015.

Population data: GHS Population Grid © European Commission, 2023  
[https://ghsl.jrc.ec.europa.eu/ghs\\_pop2023.php](https://ghsl.jrc.ec.europa.eu/ghs_pop2023.php)

The thematic layer has been derived from post-event satellite image by means of visual interpretation.

Map produced by GAF AG released by SERTIT on the 11/09/2023.

Details on this activation and service conditions available through the QR code or at the link:  
<https://rapidmapping.emergency.copernicus.eu/EMSR692>



Consequences within the AOI				
		Unit of measurement	Affected	Total in AOI
Flood trace		ha		8.9
Flooded area		ha		15,691.0
Estimated population	Number of inhabitants		~ 1,200	~ 12,000
Built-up	Residential Buildings	ha	146.0	1,127.1
	Office buildings	ha	0.0	1.0
	Industrial buildings	ha	2.8	17.9
	Military	ha	146.6	176.2
	Cemetery	ha	0.0	1.3
	Hotel buildings	ha	0.0	1
	Communication buildings, stations, terminals and associated buildings	ha	0.0	1
	Unclassified	ha	3	79
Transportation	Airfield runways	ha	146.6	176.2
	Airfield runways	km	7.1	8.7
	Highways	km	0.0	26.8
	Primary Road	km	5.4	30.4
	Secondary Road	km	7.1	104.7
	Local Road	km	66.0	407.9
	Cart Track	km	325.0	833.7
	Long-distance railways	km	4.1	52.2
Facilities	Long-distance pipelines, communication and electricity lines	km	2.5	15.5
	Local pipelines and cables	km	0.0	0.0
	Dams	km	0.0	8.0
Land use	Arable land	ha	13,596.8	25,405.1
	Other	ha	806.5	7,318.7
	Pastures	ha	413.4	509.9
	Coastal wetlands	ha	348.3	563.8
	Heterogeneous agricultural areas	ha	130.1	2,407.3
	Inland wetlands	ha	126.6	247.7
	Forests	ha	116.8	446.2
	Shrub and/or herbaceous vegetation association	ha	88.7	9,902.4
	Permanent crops	ha	72.8	2,046.7
	Open spaces with little or no vegetation	ha	0.0	90.4

**Disclaimer:**

Full disclaimer and other helpful information available in the online manual:  
<https://emergency.copernicus.eu/mapping/ems/online-manual-rapid-mapping-products>  
 © European Union / Copernicus Emergency Management Service

**Data access:**

All data displayed on the map(s), as well as Land Use - Land Cover layer(s), are available in the Crisis Information Package and the Base Layer Package (for reference data). The table above is available in editable format in the Crisis Information Package. All products and data are also available for download on the portal.

Access to the portal



PROGRAMME OF THE EUROPEAN UNION

