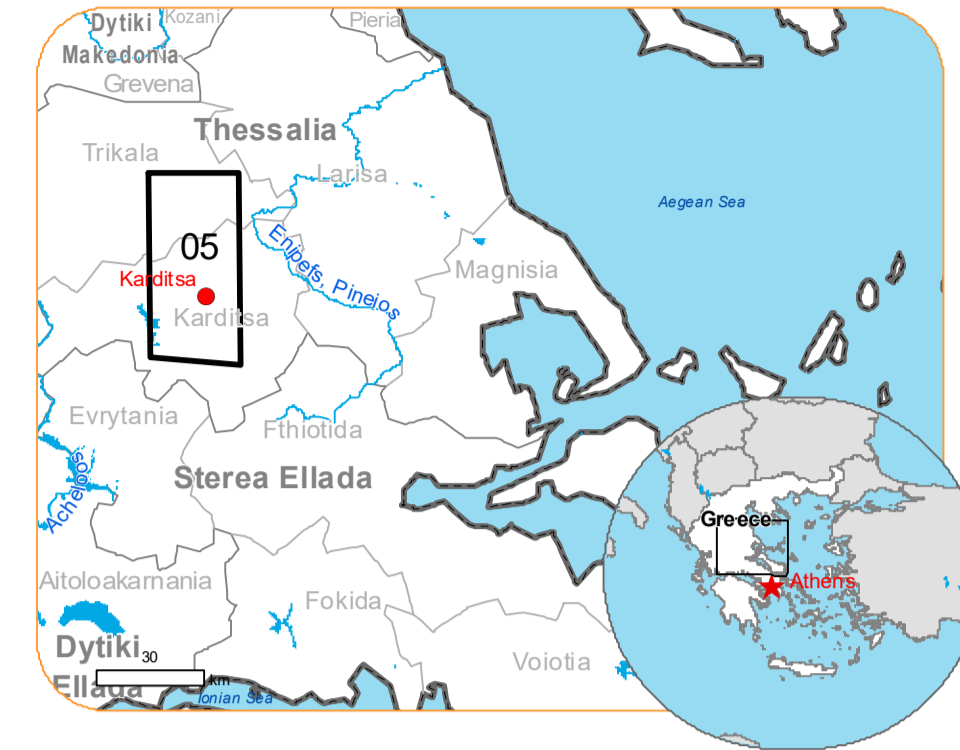




Situation as of 14/09/2023 09:16 UTC
 Delineation MONIT03 - Overview map 01



Flooded area 8,018.1 ha
 Flood trace 28,759.1 ha
 Previous flooded area 18,950.5 ha
 Potentially affected population ~ 13000

Potentially Affected Built-up and Transportations

Railway 17.0 km
 Road 613.3 km
 Built-Up 1,155.0 ha

Crisis Information	School, university and research buildings	Sport and recreation constructions
Flooded Area	Hospital or institutional care buildings	Water or Aquatic infrastructure
Flood trace	Military	Dam
Previous Flooded Area (12/09/2023 08:54 UTC)	Hydrography	Transportation
Area of Interest	River	Highway
Image Footprint	Stream	Main road
Not Analysed	Lake	Local road
Administrative boundaries	Land Subject to Inundation	Railway
Municipality	Reservoir	Airfield runway
Placename	Facilities	Airfield
Built-Up Area	Long-distance pipelines or lines	
Residential	Dam	
Non residential	Mining or extraction site	
	Power plant	

Event:
 Due to extreme rainfall in Thessaly Region, extended floods occurred in Magnesia Regional Unit, mostly around the city of Volos and coastal areas of Pelion mountain peninsula. Extreme rainfall is ongoing and according to the forecast of the National Meteorological Service the rainfall will continue until tomorrow afternoon. One person is missing, and one died, and many cars were drifted away due to the flooding. Local Fire Service received many calls for help to pump water from flooded buildings and rescue people trapped by the rising waters. Copernicus EMS Rapid Mapping is requested to provide initial rough estimation, flood extent and monitoring of the event for the emergency mapping.

Data sources and analysis: Pre-event image: Sentinel-2A/B (2023) (acquired on 31/08/2023 at 09:15 UTC, resolution 10.0 m).
 Post-event image: WorldView-3 © Maxar Technologies, Inc. (2023), (acquired on 14/09/2023 at 09:16 UTC, resolution 2.0 m). This image is used as background image.
 SPOT6/7 © Airbus DS (2023) (acquired on 12/09/2023 at 08:54 UTC, resolution 1.5 m).

All images are provided under COPERNICUS by the European Union and ESA, all rights reserved.

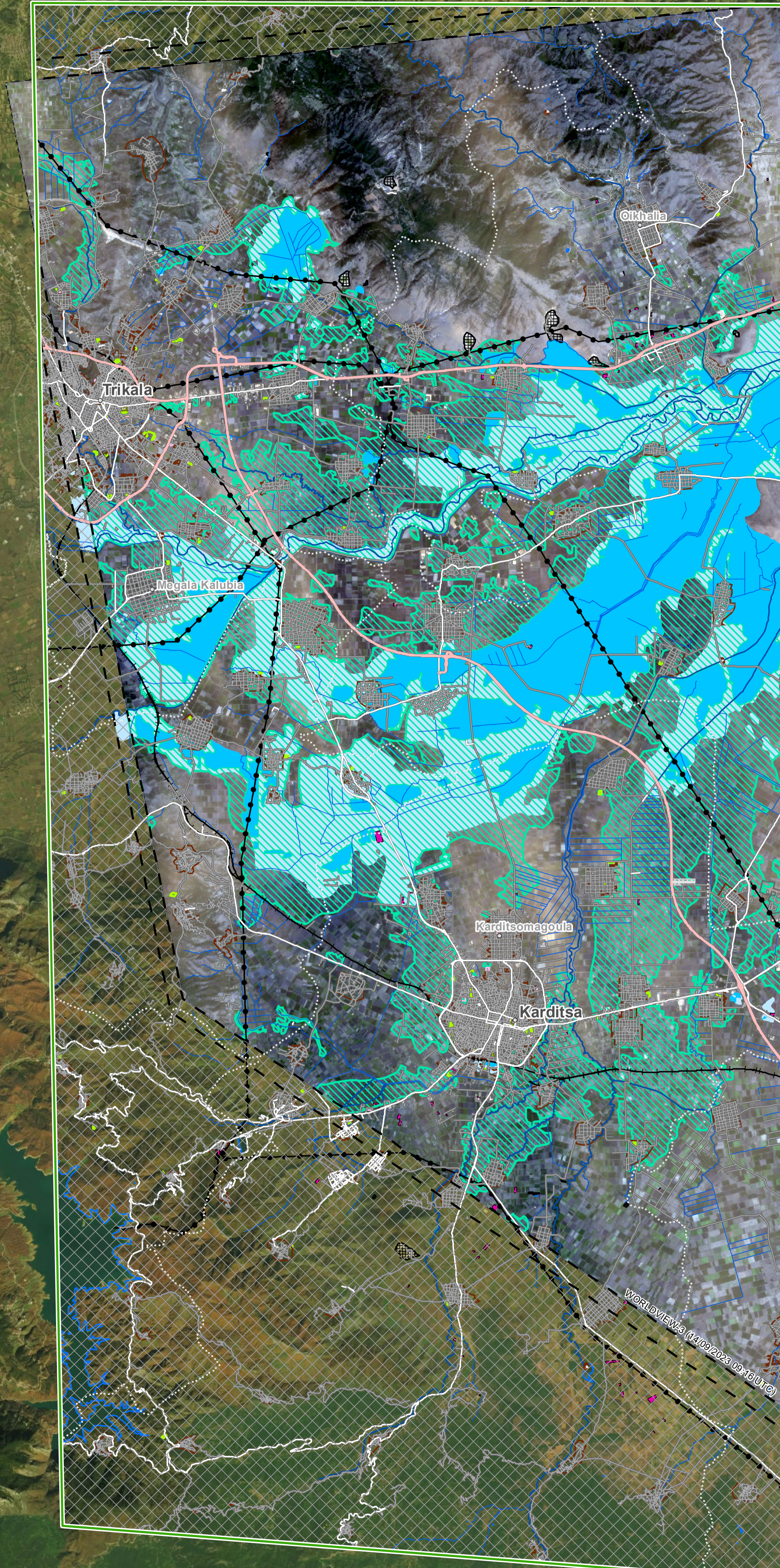
Base vector layers: OpenStreetMap © OpenStreetMap contributors (2023), Wikimapia.org, GeoNames 2015, Corine Land Cover (CLC) 2018, EuroBoundaryMap 2017 © EuroGeographics.
 Inset maps: JRC 2013, GISCO 2010 © EuroGeographics, Natural Earth 2012, CCM River DB © EUJRC2007, GeoNames 2015.

Population data: GHS Population Grid © European Commission, 2023
https://ghsl.jrc.ec.europa.eu/ghs_pop2023.php
 Digital Elevation Model: SRTM (30 m) (NASA/USGS)

The thematic layer has been derived from post-event satellite image by means of visual interpretation.

Map produced by e-GEOS released by e-GEOS on the 15/09/2023.

Details on this activation and service conditions available through the QR code or at the link:
<https://rapidmapping.emergency.copernicus.eu/EMSR692>



Consequences within the AOI				
		Unit of measurement	Affected	Total in AOI
Flooded area		ha		8,018.1
Flood trace		ha		28,759.1
Previous flooded area		ha		18,950.5
Estimated population		Number of inhabitants	~ 13,000	~ 140,000
Built-up	Residential Buildings	ha	1,063.4	6,220.8
	Office buildings	ha	0.7	17.2
	Wholesale and retail trade buildings	ha	0.0	14.1
	Industrial buildings	ha	78.4	271.3
	School, university and research buildings	ha	2.2	57.9
	Hospital or institutional care buildings	ha	0.0	7.0
	Military	ha	5.1	19.4
	Cemetery	ha	5.2	27.3
Transportation	Airfield runways	ha	14.1	14.8
	Airfield runways	km	0.7	0.7
	Highways	km	49.2	145.2
	Primary Road	km	26.8	112.9
	Secondary Road	km	43.4	280.0
	Local Road	km	493.9	2,223.9
	Long-distance railways	km	17.0	59.0
Facilities	Settling Basin	ha	0.0	2.0
	Dams	ha	0.0	0.0
	Constructions for mining or extraction	ha	5.1	120.7
	Power plant constructions	ha	22.4	68.2
	Sport and recreation constructions	ha	13.7	130.6
	Long-distance pipelines, communication and electricity lines	km	63.5	145.8
	Dams	km	0.3	0.5
Land use	Arable land	ha	31,835.2	73,395.5
	Other	ha	1,887.8	8,346.6
	Pastures	ha	1,878.5	3,137.9
	Heterogeneous agricultural areas	ha	872.3	9,914.2
	Inland wetlands	ha	127.8	172.9
	Forests	ha	95.9	11,190.0
	Shrub and/or herbaceous vegetation association	ha	68.4	24,751.7
	Permanent crops	ha	11.4	1,216.3
	Open spaces with little or no vegetation	ha	0.0	51.3

Disclaimer:

Full disclaimer and other helpful information available in the online manual:
<https://emergency.copernicus.eu/mapping/ems/online-manual-rapid-mapping-products>
 © European Union / Copernicus Emergency Management Service

Data access:

All data displayed on the map(s), as well as Land Use - Land Cover layer(s), are available in the Crisis Information Package and the Base Layer Package (for reference data). The table above is available in editable format in the Crisis Information Package. All products and data are also available for download on the portal.

Access to the portal



PROGRAMME OF THE EUROPEAN UNION

