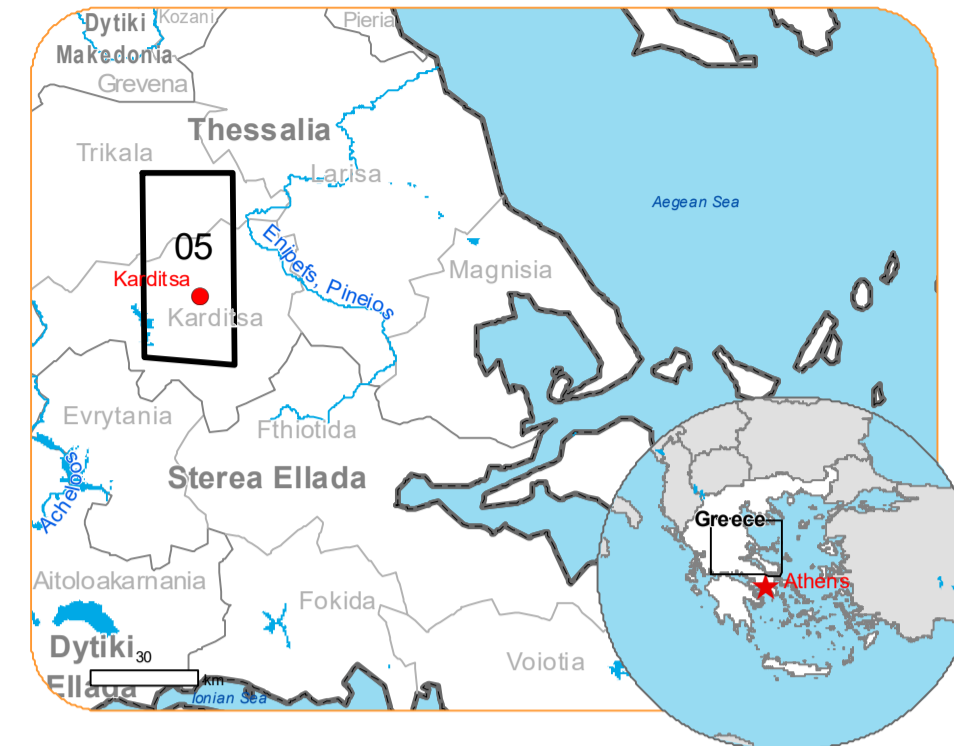


EMSR692 - AOI05
Flood in Greece
KARDITSA

Situation as of 17/09/2023 09:05 UTC
 Delineation MONIT04 - Overview map 01



Previous flooded area 8,018.1 ha
 Flooded area 3,314.6 ha
 Flood trace 28,759.1 ha
 Potentially affected population ~ 12000

Potentially Affected Built-up and Transportations

Railway 15.7 km
 Road 549.0 km
 Built-Up 1,048.8 ha

- | | | |
|--|---|------------------------------------|
| Crisis Information | School, university and research buildings | Sport and recreation constructions |
| Flooded Area | Hospital or institutional care buildings | Water or Aquatic infrastructure |
| Flood trace | Military | Dam |
| Previous Flooded Area (14/09/2023 09:16 UTC) | Hydrography | Transportation |
| Area of Interest | River | Highway |
| Image Footprint | Stream | Main road |
| Not Analysed | Lake | Local road |
| Administrative boundaries | Land Subject to Inundation | Railway |
| Municipality | Reservoir | Airfield runway |
| Placename | Facilities | Airfield |
| Placename | Long-distance pipelines or lines | |
| Built-Up Area | Dam | |
| Residential | Mining or extraction site | |
| Non residential | Power plant | |

Event:
 Due to extreme rainfall in Thessaly Region, extended floods occurred in Magnesia Regional Unit, mostly around the city of Volos and coastal areas of Pelion mountain peninsula. Extreme rainfall is ongoing and according to the forecast of the National Meteorological Service the rainfall will continue until tomorrow afternoon. One person is missing, and one died, and many cars were drifted away due to the flooding. Local Fire Service received many calls for help to pump water from flooded buildings and rescue people trapped by the rising waters. Copernicus EMS Rapid Mapping is requested to provide initial rough estimation, flood extent and monitoring of the event for the emergency mapping.

Data sources and analysis: Pre-event image: Sentinel-2A/B (2023) (acquired on 31/08/2023 at 09:15 UTC, resolution 10.0 m).
 Post-event image: SPOT6/7 @ Airbus DS (2023) (acquired on 17/09/2023 at 09:05 UTC, resolution 1.5 m). This image is used as background image.
 WorldView-3 @ Maxar Technologies, Inc. (2023), (acquired on 14/09/2023 at 09:16 UTC, resolution 2.0 m).

All images are provided under COPERNICUS by the European Union and ESA, all rights reserved.

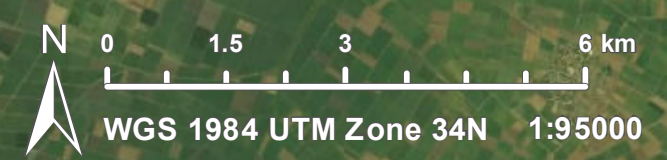
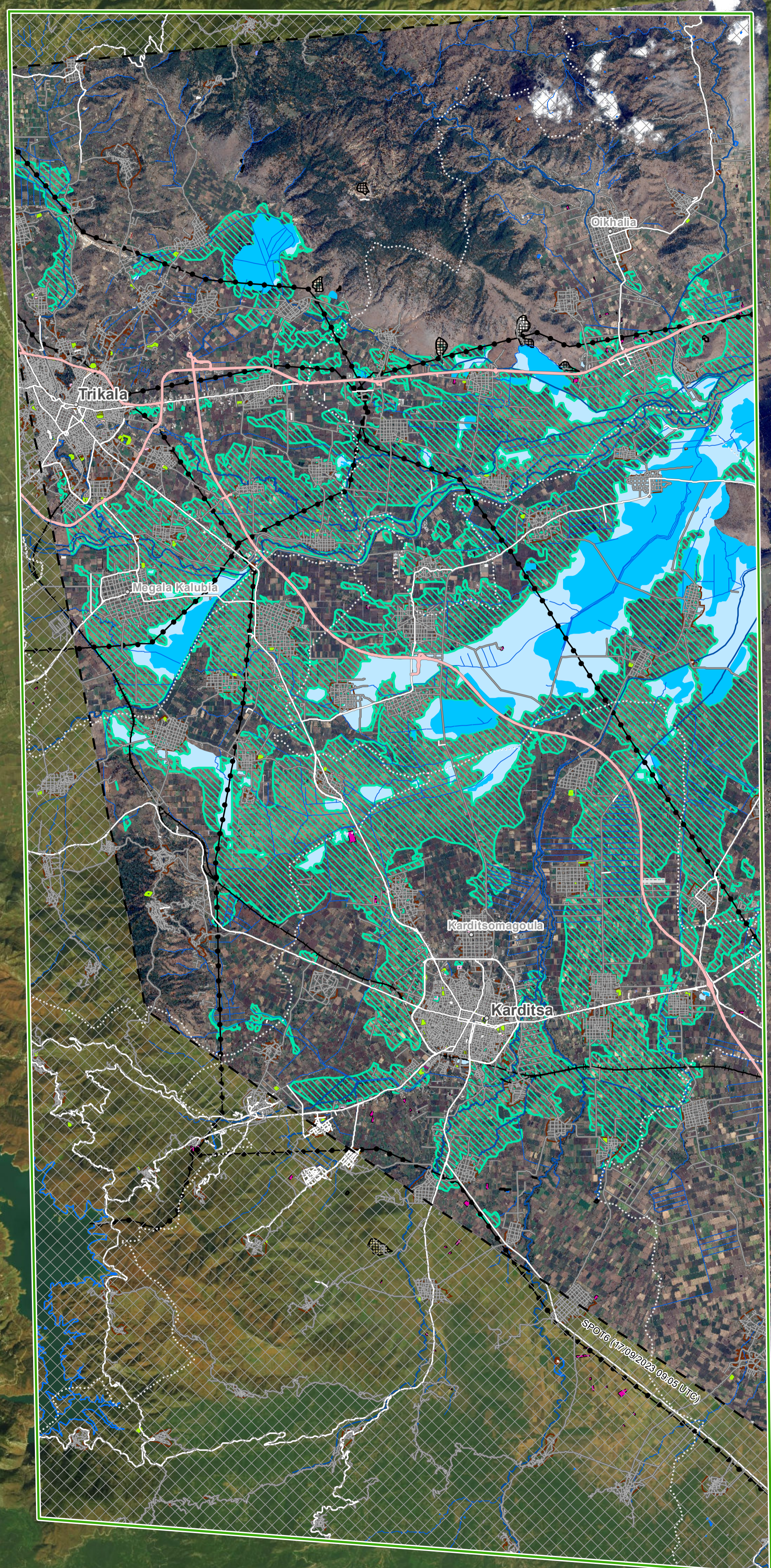
Base vector layers: OpenStreetMap © OpenStreetMap contributors (2023), Wikimapia.org, GeoNames 2015, Corine Land Cover (CLC) 2018, EuroBoundaryMap 2017 © EuroGeographics.
 Inset maps: JRC 2013, GISCO 2010 © EuroGeographics, Natural Earth 2012, CCM River DB © EUJRC2007, GeoNames 2015.

Population data: GHS Population Grid © European Commission, 2023
https://ghsl.jrc.ec.europa.eu/ghs_pop2023.php
 Digital Elevation Model: SRTM (30 m) (NASA/USGS).

The thematic layer has been derived from post-event satellite image by means of visual interpretation.

Map produced by e-GEOS released by e-GEOS on the 17/09/2023.

Details on this activation and service conditions available through the QR code or at the link:
<https://rapidmapping.emergency.copernicus.eu/EMSR692>



Consequences within the AOI				
		Unit of measurement	Affected	Total in AOI
Previous flooded area		ha		8,018.1
Flooded area		ha		3,314.6
Flood trace		ha		28,759.1
Estimated population		Number of inhabitants	~ 12,000	~ 140,000
Built-up	Residential Buildings	ha	957.5	6,220.8
	Office buildings	ha	0.7	17.2
	Wholesale and retail trade buildings	ha	0.0	14.1
	Industrial buildings	ha	78.4	271.3
	School, university and research buildings	ha	2.2	57.9
	Hospital or institutional care buildings	ha	0.0	7.0
	Military	ha	5.1	19.4
	Cemetery	ha	4.8	27.3
Transportation	Airfield runways	ha	14.1	14.8
	Airfield runways	km	0.7	0.7
	Highways	km	39.3	145.2
	Primary Road	km	26.3	112.9
	Secondary Road	km	36.7	280.0
	Local Road	km	446.7	2,223.9
	Long-distance railways	km	15.7	59.0
Facilities	Settling Basin	ha	0.0	2.0
	Dams	ha	0.0	0.0
	Constructions for mining or extraction	ha	3.4	120.7
	Power plant constructions	ha	18.9	68.2
	Sport and recreation constructions	ha	13.7	130.6
	Long-distance pipelines, communication and electricity lines	km	53.4	145.8
	Dams	km	0.3	0.5
Land use	Arable land	ha	27,478.6	73,395.5
	Pastures	ha	1,716.7	3,137.9
	Other	ha	1,693.2	8,346.6
	Heterogeneous agricultural areas	ha	848.8	9,914.2
	Inland wetlands	ha	127.8	172.9
	Forests	ha	84.1	11,190.0
	Shrub and/or herbaceous vegetation association	ha	60.1	24,751.7
	Permanent crops	ha	11.4	1,216.3
	Open spaces with little or no vegetation	ha	0.0	51.3

Disclaimer:

Full disclaimer and other helpful information available in the online manual:

<https://emergency.copernicus.eu/mapping/ems/online-manual-rapid-mapping-products>

© European Union / Copernicus Emergency Management Service

Data access:

All data displayed on the map(s), as well as Land Use - Land Cover layer(s), are available in the Crisis Information Package and the Base Layer Package (for reference data).

The table above is available in editable format in the Crisis Information Package.

All products and data are also available for download on the portal.

Access to the portal



PROGRAMME OF THE EUROPEAN UNION

