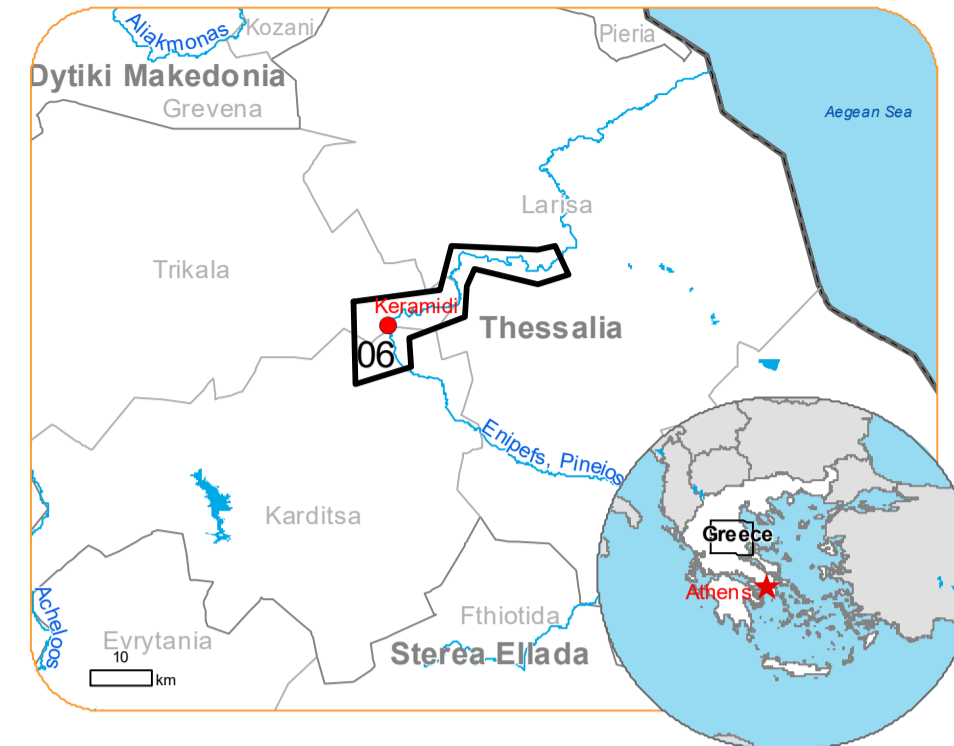




Situation as of 22/09/2023 09:46 UTC
Delineation MONIT01 - Overview map 01



Flooded area 2,374.8 ha
 Previous flooded area 3,055.2 ha
 Dike breach 11 No.
 Potentially affected population ~ 150

Potentially Affected Built-up and Transportations

Road 3.2 km
 Built-Up 5.7 ha

Crisis Information	Built-Up Area	Facilities
Dike breach	Residential Non residential	Long-distance pipelines or lines
Flooded Area Previous Flooded Area (18/09/2023 09:19 UTC, 19/09/2023 09:33 UTC, 19/09/2023 09:34 UTC)	School, university and research buildings Hospital or institutional care buildings Military	Dam Mining or extraction site Power plant Sport and recreation constructions Dam
General Information	Hydrography	Transportation
Area of Interest	River Stream	Highway Main road Railway Airfield runway Helipad
Placenames	Land Subject to Inundation	
Placename		

Event:
Due to extreme rainfall in Thessaly Region, extended floods occurred in Magnesia Regional Unit, mostly around the city of Volos and coastal areas of Pelion mountain peninsula. Extreme rainfall is ongoing and according to the forecast of the National Meteorological Service the rainfall will continue until tomorrow afternoon. One person is missing, and one died, and many cars were drifted away due to the flooding. Local Fire Service received many calls for help to pump water from flooded buildings and rescue people trapped by the rising waters. Copernicus EMS Rapid Mapping is requested to provide initial rough estimation, flood extent and monitoring of the event for the emergency mapping.

Data sources and analysis: Pre-event image: Sentinel-2A/B (2023) (acquired on 31/08/2023 at 09:15 UTC, resolution 10.0 m).
Post-event image: GEOEYE © Maxar Technologies, Inc. (2023), (acquired on 22/09/2023 at 09:46 UTC, resolution 2 m). This image is used as background image.
WorldView-2 © Maxar Technologies, Inc. (2023), (acquired on 18/09/2023 at 10:08 UTC, resolution 2 m).
WorldView-2 © Maxar Technologies, Inc. (2023), (acquired on 19/09/2023 at 09:33 UTC, resolution 2 m).
WorldView-2 © Maxar Technologies, Inc. (2023), (acquired on 19/09/2023 at 09:34 UTC, resolution 2 m).
All images are provided under COPERNICUS by the European Union and ESA, all rights reserved.

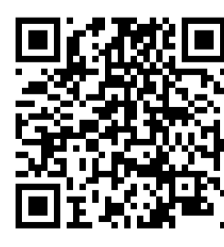
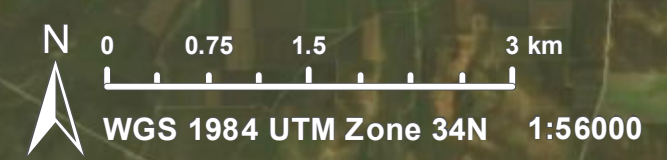
Base vector layers: OpenStreetMap © OpenStreetMap contributors (2023), Wikimapia.org, GeoNames 2015, Corine Land Cover (CLC) 2018, EuroBoundaryMap 2017 © EuroGeographics.
Inset maps: JRC 2013, GISCO 2010 © EuroGeographics, Natural Earth 2012, CCM River DB © EUJRC2007, GeoNames 2015.

Population data: GHS Population Grid © European Commission, 2023
https://ghsl.jrc.ec.europa.eu/ghs_pop2023.php
Digital Elevation Model: SRTM (30 m) (NASA/USGS)

The thematic layer has been derived from post-event satellite image by means of visual interpretation.

Map produced by ITHACA released by e-GEOS on the 22/09/2023.

Details on this activation and service conditions available through the QR code or at the link:
<https://rapidmapping.emergency.copernicus.eu/EMSR692>



Consequences within the AOI				
		Unit of measurement	Affected	Total in AOI
Previous flooded area		ha		3 055.2
Dike breach		No.		11
Flooded area		ha		2 374.8
Estimated population	Number of inhabitants		~ 150	~ 81 000
Built-up	Residential Buildings	ha	5.7	1 065.1
	Office buildings	ha	0.0	39.3
	Wholesale and retail trade buildings	ha	0.0	0.2
	Industrial buildings	ha	0.0	43.1
	School, university and research buildings	ha	0.0	52.1
	Hospital or institutional care buildings	ha	0.0	1.4
	Military	ha	0.0	64.3
	Cemetery	ha	0.0	2.3
Transportation	Helipad	ha	0.0	0.2
	Airfield runways	km	0.0	1.1
	Highways	km	0.0	80.8
	Primary Road	km	0.0	16.1
	Secondary Road	km	3.2	39.0
	Long-distance railways	km	0.0	9.9
Facilities	Dams	ha	0.0	0.0
	Constructions for mining or extraction	ha	0.0	80.8
	Power plant constructions	ha	0.0	34.5
	Sport and recreation constructions	ha	0.1	82.3
	Long-distance pipelines, communication and electricity lines	km	1.2	73.1
	Dams	km	0.0	0.1
Land use	Arable land	ha	2 338.3	16 879.3
	Other	ha	20.3	2 646.7
	Pastures	ha	9.1	384.4
	Inland wetlands	ha	5.1	181.9
	Heterogeneous agricultural areas	ha	0.7	119.4
	Forests	ha	0.3	25.2
	Shrub and/or herbaceous vegetation association	ha	0.2	7 536.2
	Permanent crops	ha	0.0	318.1

Disclaimer:

Full disclaimer and other helpful information available in the online manual:
<https://emergency.copernicus.eu/mapping/ems/online-manual-rapid-mapping-products>
 © European Union / Copernicus Emergency Management Service

Data access:

All data displayed on the map(s), as well as the Physiography and Land Use - Land Cover layers, are available in the Crisis Information Package and the Base Layer Package (for reference data). The table above is available in editable format in the Crisis Information Package. All products and data are also available for download on the portal.

