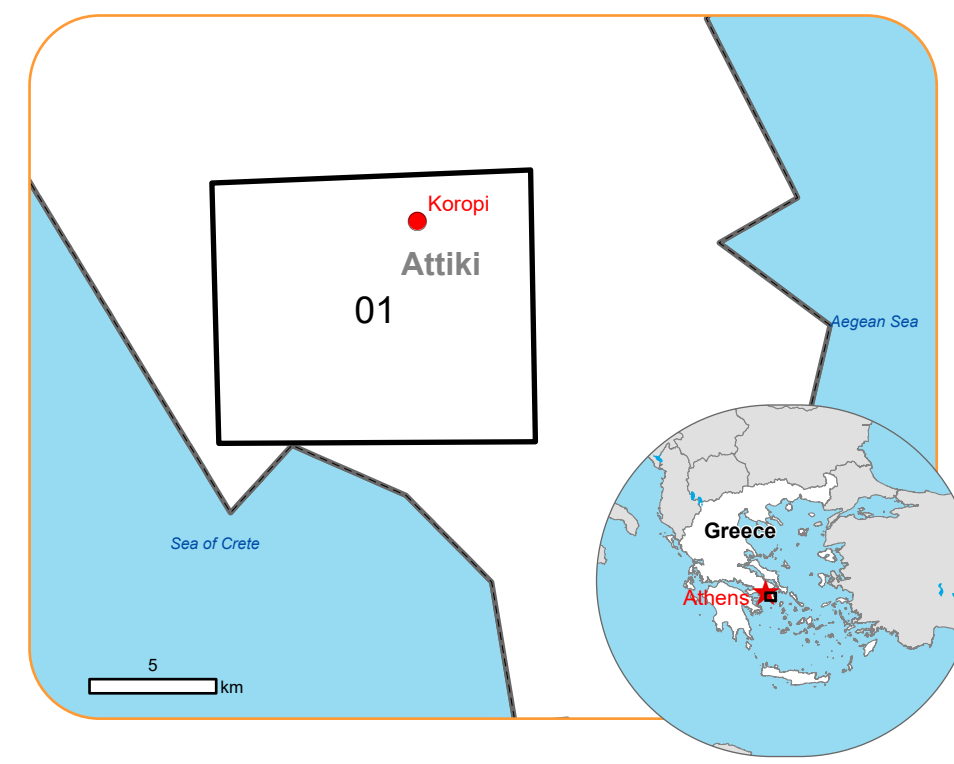




EMSR729 - AOI01
Wildfire in Greece
KOROPI

Situation as of 20/06/2024 09:25 UTC
Grading - Overview map 01



Observed Event
Burnt area 80.4 ha

Potentially affected population
~70

Potentially Affected Built-up
Built-up
72 No.

- Crisis Information**
- Burnt Area
- Built Up Grading**
- Destroyed
 - Damaged
 - Possibly damaged
- Facilities Grading**
- Long-distance pipeline or line, Possibly damaged
 - Possibly damaged
- Transportation Grading**
- Highway, No visible damage
 - Main road, No visible damage
 - Local road, No visible damage
 - Track, No visible damage
 - Railway, No visible damage
- Airfield and Heliport, No visible damage**
- Affected Land Use-Cover**
- Heterogeneous agricultural areas
 - Shrub and/or herbaceous vegetation associations
 - Other
- General Information**
- Area of Interest
 - Detail map
- Administrative Boundaries**
- Municipality
- Placenames**
- Placename
- Hydrography**
- Stream
 - Lake

Event: On 19 June 2024 at 13:14 local time a wildfire started very close to the urban area of Kotopi town 20 Km southeast from Athens. The fire expanded rapidly due to the strong winds and threatened the settlement of Kitsi and the nearby industrial area. Residents of Kitsi had to be evacuated and a 112 cell broadcasting message was sent for this purpose. 45 vehicles with 145 firefighters and 17 aereal means were used for fire suppression, assisted by municipality forces and volunteer organizations. Copernicus EMS Rapid Mapping is requested to provide initial rough estimation, fire extent and damage assessment emergency mapping.

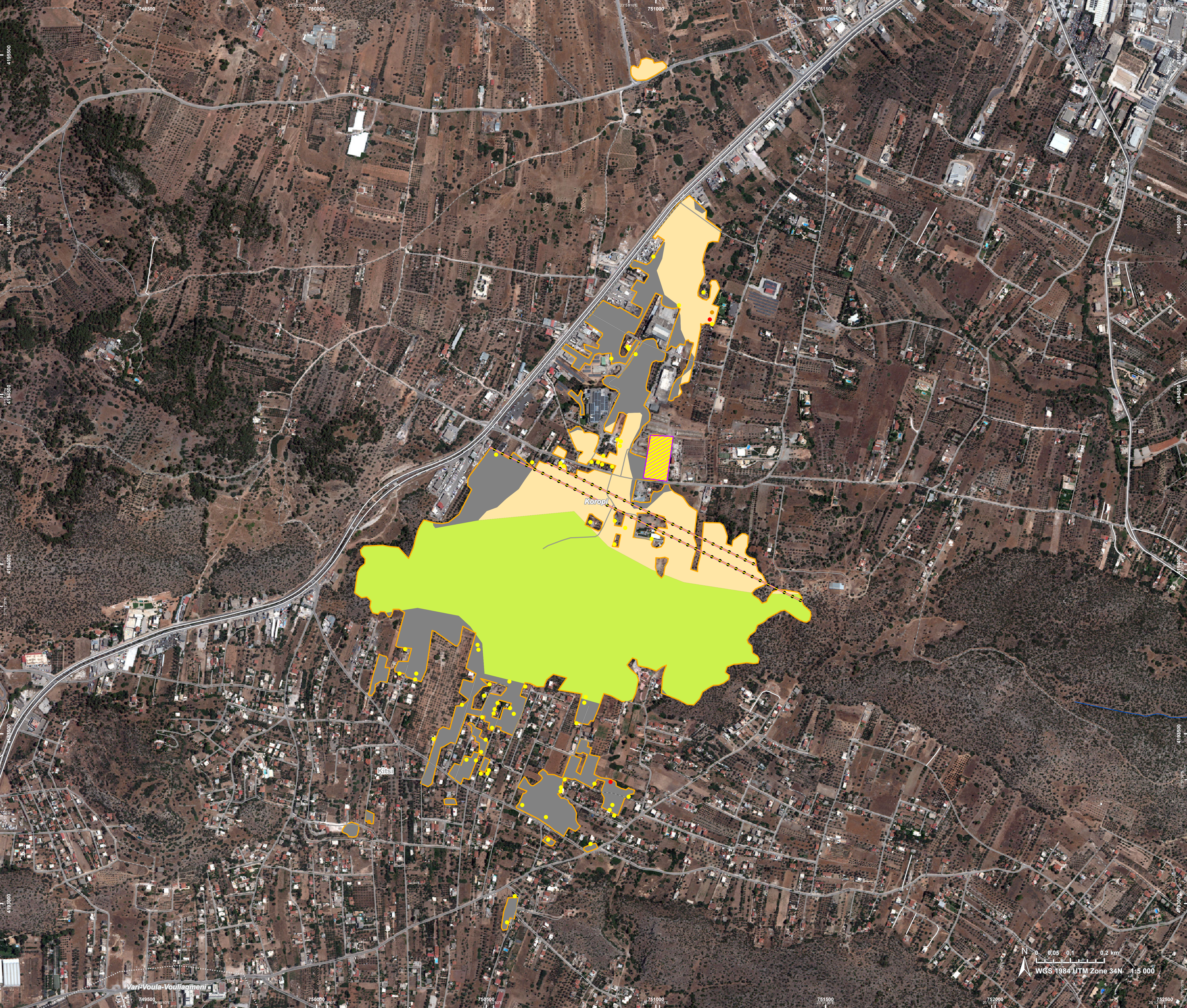
Data sources and analysis: Pre-event image: ESRI World Imagery © DigitalGlobe (acquired on 25/12/2023, resolution 1.2 m). Post-event image: WorldView-3 Maxar Technologies, Inc. (2024), (acquired on 20/06/2024 at 09:25 UTC, resolution 1.6 m). This image is used as background image. All images are provided under COPERNICUS by the European Union and ESA, all rights reserved.

The thematic layer has been derived from post-event satellite image by means of visual interpretation.

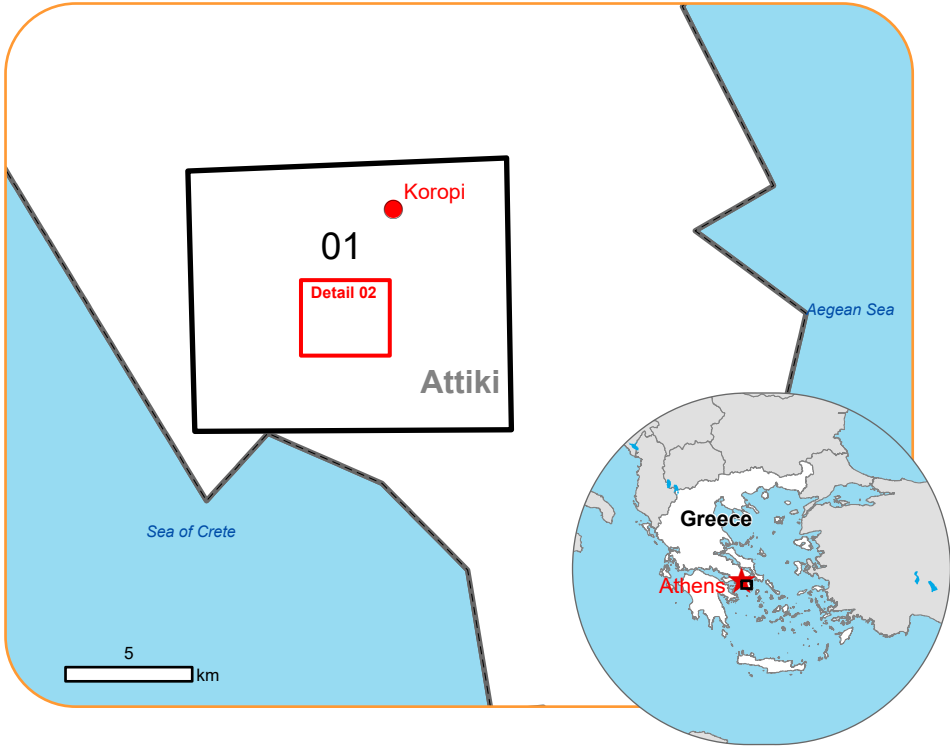
This analysis has been supplemented by the social media.

Map produced by CLS released by e-GEOS on the 20/06/2024.

Details on this activation and service conditions available through the QR code or at the link: <https://rapidmapping.emergency.copernicus.eu/EMSR729>



Situation as of 20/06/2024 09:25 UTC
Grading - Detail map 02



Crisis Information

Burnt Area

Built Up Grading

- Destroyed
- Damaged
- Possibly damaged

Facilities Grading

- Long-distance pipeline or line, Possibly damaged
- Possibly damaged

Transportation Grading

- Main road, No visible damage
- Local road, No visible damage
- Track, No visible damage

Affected Land Use-Cover

- Heterogeneous agricultural areas
- Shrub and/or herbaceous vegetation associations
- Other

General Information

Area of Interest

Administrative Boundaries

Municipality

Placenames

Placename

Hydrography

Stream

Event: On 19 June 2024 at 13:14 local time a wildfire started very close to the urban area of Kotopi town 20 Km southeast from Athens. The fire expanded rapidly due to the strong winds and threatened the settlement of Kitsi and the nearby industrial area. Residents of Kitsi had to be evacuated and a 112 cell broadcasting message was sent for this purpose. 45 vehicles with 145 firefighters and 17 aerial means were used for fire suppression, assisted by municipality forces and volunteer organizations. Copernicus EMS Rapid Mapping is requested to provide initial rough estimation, fire extent and damage assessment emergency mapping.

Data sources and analysis: Pre-event image: ESRI World Imagery © DigitalGlobe (acquired on 25/12/2023, resolution 1.2 m). Post-event image: WorldView-3 Maxar Technologies, Inc. (2024), (acquired on 20/06/2024 at 09:25 UTC, resolution 1.6 m). This image is used as background image. All images are provided under COPERNICUS by the European Union and ESA, all rights reserved.

The thematic layer has been derived from post-event satellite image by means of visual interpretation.

This analysis has been supplemented by the social media.

Map produced by CLS released by e-GEOS on the 20/06/2024.

Details on this activation and service conditions available through the QR code or at the link: <https://rapidmapping.emergency.copernicus.eu/EMSR729>



Consequences within the AOI						
	Unit of measurement	Destroyed	Damaged	Possibly damaged*	Total affected**	Total in AOI
Burnt area	ha					80,4
Estimated population	Number of inhabitants				~ 70	~ 40 000
Built-up	Residential Buildings	No. 1	2	43	46	893
	Office buildings	No. 0	0	0	0	5
	Institutional	No. 0	0	0	0	2
	Fire station	No. 0	0	0	0	1
	Wholesale and retail trade buildings	No. 0	0	0	0	16
	Industrial buildings	No. 0	0	0	0	212
	Public entertainment buildings	No. 0	0	0	0	2
	Museums and libraries	No. 0	0	0	0	1
	School, university and research buildings	No. 0	0	0	0	17
	Hospital or institutional care buildings	No. 0	0	0	0	1
	Other non-residential buildings	No. 1	0	25	26	26
	Non-residential farm buildings	No. 0	0	0	0	10
	Buildings used as places of worship and for religious activities	No. 0	0	0	0	12
	Communication buildings, stations, terminals and associated buildings	No. 0	0	0	0	2
	Unclassified	No. 0	0	0	0	1 103
Transportation	Helipad	ha 0	0	0	0	0,4
	Highways	km 0	0	0	0	21,2
	Primary Road	km 0	0	0	0	72,2
	Secondary Road	km 0	0	0	0	27,9
	Local Road	km 0	0	0	0	536,0
	Cart Track	km 0	0	0	0	372,3
	Railway Yard	km 0	0	0	0	0,1
	Long-distance railways	km 0	0	0	0	13,4
Facilities	Constructions for mining or extraction	ha 0	0	0	0	182,2
	Power plant constructions	ha 0	0	0,9	0,9	1,9
	Sport and recreation constructions	ha 0	0	0	0	52,2
	Long-distance pipelines, communication and electricity lines	km 0	0	1,7	1,7	55,0
Land use	Shrub and/or herbaceous vegetation association	ha			41,2	4 524,2
	Other	ha			20,6	2 208,7
	Heterogeneous agricultural areas	ha			18,6	4 951,0
	Permanent crops	ha			0	720,8
	Pastures	ha			0	181,1
	Forests	ha			0	276,4
	Open spaces with little or no vegetation	ha			0	291,1
* Presence of damage proxies and proximity with destroyed/damaged asset						
** Sum of all damage classes						

Disclaimer:

Full disclaimer and other helpful information available in the online manual:
<https://emergency.copernicus.eu/mapping/ems/online-manual-rapid-mapping-products>
 © European Union / Copernicus Emergency Management Service

Data Access:

All data displayed on the map(s), as well as the Physiography and Land Use - Land Cover layers, are available in the Crisis Information Package and the Base Layer Package (for reference data). The table above is available in editable format in the Crisis Information Package. All products and data are also available for download on the portal.

Estimated Population:

Estimated population is based on Copernicus Global Human Settlement Layer (GHSL) dataset. Additional population datasets and analysis are available in the summary table.

Data Sources:

Base vector layers: OpenStreetMap © OpenStreetMap contributors (2024), Wikimapia.org, GeoNames 2015,

Corine Land Cover (CLC) 2018, EuroBoundaryMap 2017 ©EuroGeographics.

Inset maps: JRC 2013, GISCO 2010 © EuroGeographics, Natural Earth 2012, CCM River DB © EUJRC2007, GeoNames 2015.

Digital Elevation Model: COP-DEM-EEA-10-R product © DLR e.V. (2014-2018) and

© Airbus Defence and Space GmbH (2020) provided under COPERNICUS by the European Union and ESA, all rights reserved.

Access to the portal



PROGRAMME OF THE
EUROPEAN UNION

