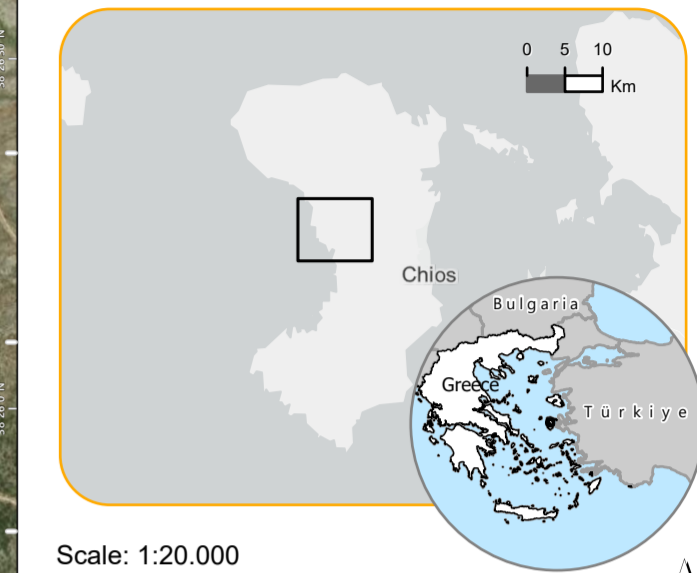


EMSN198 - AOI01
Wildfire delineation and grading in
Chios Island, GREECE

P01 - Wildfire delineation and grading

Map Overview



Scale: 1:20.000

0 0,5 Km
Full colour A2, 200 dpi resolution

Measured grid: WGS 1984 UTM Zone 35N, Graticule: GCS WGS 1984

Legend

- Area of Interest
- P01 - FireDelineation
- P01 - FireGrading
- Damage Grade
 - Unburned or Regrowth
 - Low severity
 - Moderate low severity
 - Moderate high severity
 - High severity

Activation reason:

Risk and Recovery Mapping is activated to support the General Secretariat for Civil Protection of Greece and local authorities (Forest Service, Regional authorities and municipalities) for recovery and restoration planning of the affected area, after wildfire activated from July 1st to July 8th, 2024.

This overview map shows information on the extent and severity of the wildfire within the specified area of interest. To achieve it, data from the Sentinel-2 satellite were used to map the burned areas and assess the fire using specific burn area indices.

A high thematic accuracy was achieved, following the Quality Control methodology described in the Final Report.

Data sources and analysis:

Main input for burned area delineation and grading are recent Sentinel-2 scenes. Tile: T35SMC. Pre-Event Sentinel-2 composite. Acquisition date: 30/06/2024. Post-Event Sentinel-2 composite. Acquisition date: 10/07/2024

Thermal anomalies detected by VIIRS satellite sensor is an additional input. As supporting information to summarize affected areas, pre-existing Land Use Land Cover (provided by Authorised User) has been implemented.

Multispectral Sentinel-2 images closest to the date of the fire were used to automatically delineate the perimeter. Subsequently, using the IWG-SEM methodology, the burned area has been segmented based on the damage severity.

(Background outside AOI) ESRI Basemap: Esri, TomTom, Garmin, Foursquare, FAO, METV, NASA, USGS, Maxar

Disclaimer

Products elaborated in this Copernicus EMS Risk and Recovery Mapping activation are realized to the best of our ability, optimizing the available data and information. All geographic information has limitations due to scale, resolution, date and interpretation of the original sources. No liability concerning the contents or the use thereof is assumed by the producer and by the European Union.

Delivery formats are PDF and vector (ESRI File GDB).
Map produced by INDRA

Details of this activation and service conditions available through the QR code or at the website:
<https://riskandrecovery.emergency.copernicus.eu/EMSN198/>

