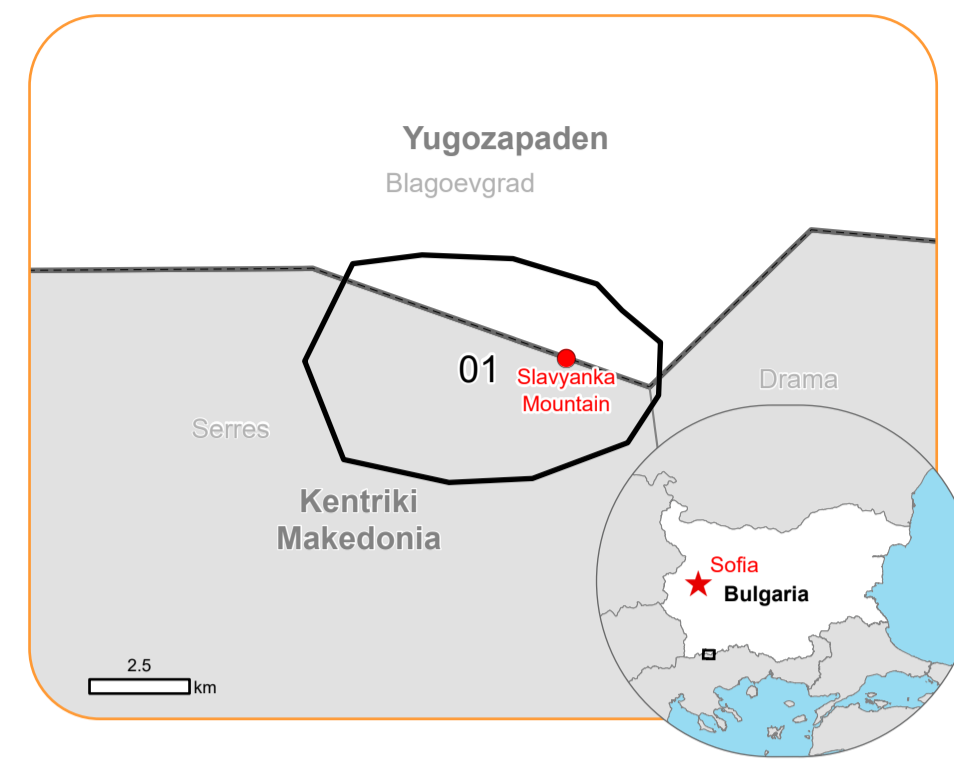


**EMSR740 - AOI01**  
**Wildfire in Bulgaria**  
**SLAVYANKA MOUNTAIN**

**Situation as of 29/07/2024 08:33 UTC**  
 Delineation MONIT02 - Overview map 01



**Active Flames 2 No.**  
**Fire Fronts 0.1 km**  
**Burnt area 562.4 ha**

**Potentially affected population**  
 ~ Not available

- Crisis Information**
- Active Flames
  - Fire Fronts
  - Burnt area
- Administrative Boundaries**
- International Boundary
  - Province
  - Municipality
- Transportation**
- Track

	Current		Forecast	
	Jul 29, 08:33 UTC	Jul 30, 08:33 UTC	Jul 31, 08:33 UTC	Jul 31, 08:33 UTC
Wind direction and speed	8 km/h	15 km/h	9 km/h	9 km/h
Temperature and relative Humidity	30°  38%	26°  33%	26°  39%	26°  39%

Data retrieved from ECMWF on Jul 29, 08:33 UTC. Calculated at: 41.365°N, 23.62°E.

**Event:** On 24 July 2024, a wildfire was located over a border area between Bulgaria and Greece, in the Slavyanka Mountain, a difficult-to-access mountainous terrain above 2 000 meters with hazard linked to an old minefield. Copernicus EMS Rapid Mapping is requested to provide wildfire extent mapping and monitoring.

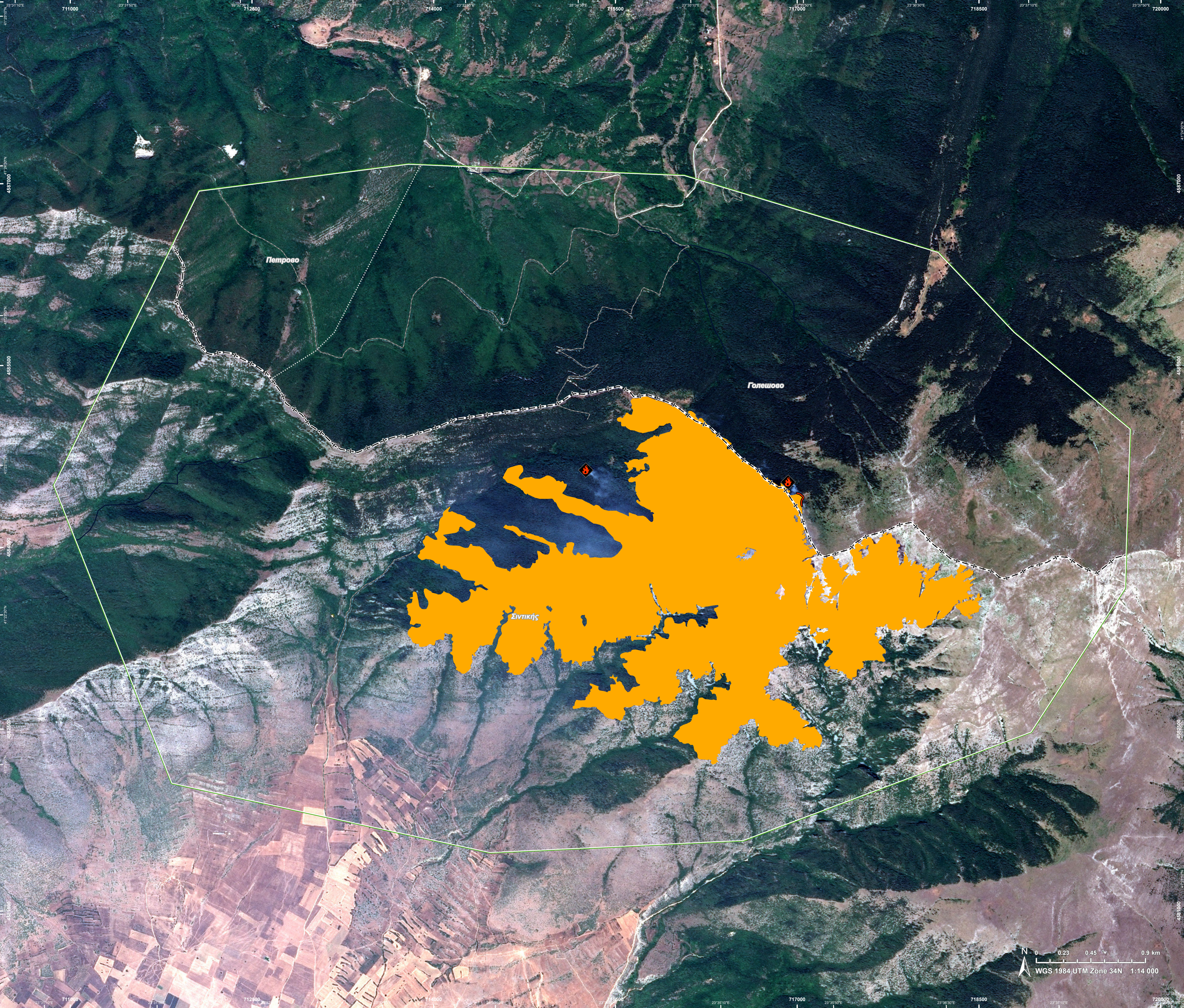
**Data sources and analysis:** Pre-event image: Sentinel-2A/B (2024) (acquired on 16/07/2024 at 09:15 UTC, resolution 10.0 m). Post-event image: SPOT6 © Airbus DS (2024), (acquired on 29/07/2024 at 08:33 UTC, resolution 1.5 m). This image is used as background image. All images are provided under COPERNICUS by the European Union and ESA, all rights reserved.

The thematic layer has been derived from post-event satellite image using by means of visual interpretation. Due to dense smoke, the burnt area delineation is not complete.

The current burnt area cumulates all burnt area extents from previous post-event products.

Map produced by e-GEOS released by e-GEOS on the 29/07/2024.

Details on this activation and service conditions available through the QR code or at the link: <https://rapidmapping.emergency.copernicus.eu/EMSR740>





Consequences within the AOI				
		Unit of measurement	Affected	Total in AOI
Burnt area		ha		562.4
Fire Fronts		km		0.1
Active Flames		No.		2
Estimated population		Number of inhabitants	NA	~ 10
Transportation	Cart Track	km	0	17.8
Land use	Forests	ha	236.2	1 968.1
	Open spaces with little or no vegetation	ha	234.8	1 321.1
	Shrub and/or herbaceous vegetation association	ha	91.4	624.9
	Arable land	ha	0	87.6
	Heterogeneous agricultural areas	ha	0	11.2

**Disclaimer:**

Full disclaimer and other helpful information available in the online manual:  
<https://emergency.copernicus.eu/mapping/ems/online-manual-rapid-mapping-products>  
 © European Union / Copernicus Emergency Management Service

**Data Access:**

All data displayed on the map(s), as well as the Physiography and Land Use - Land Cover layers, are available in the Crisis Information Package and the Base Layer Package (for reference data). The table above is available in editable format in the Crisis Information Package. All products and data are also available for download on the portal.

Access to the portal



**Estimated Population:**

Estimated population is based on Copernicus Global Human Settlement Layer (GHSL) dataset. Additional population datasets and analysis are available in the summary table.

**Data Sources:**

Base Vector Layers: OpenStreetMap © OpenStreetMap contributors (2024), Wikimapia.org, GeoNames 2015, Corine Land Cover (CLC) 2018, EuroBoundaryMap 2017 ©EuroGeographics.  
 Inset Maps: JRC 2013, GISCO 2010 © EuroGeographics, Natural Earth 2012, CCM River DB © EUJRC2007, GeoNames 2015.  
 Digital Elevation Model: FABDEM (ForestAndBuildingsremovedCopernicusDEM) removes building and tree height biases from the Copernicus GLO 30