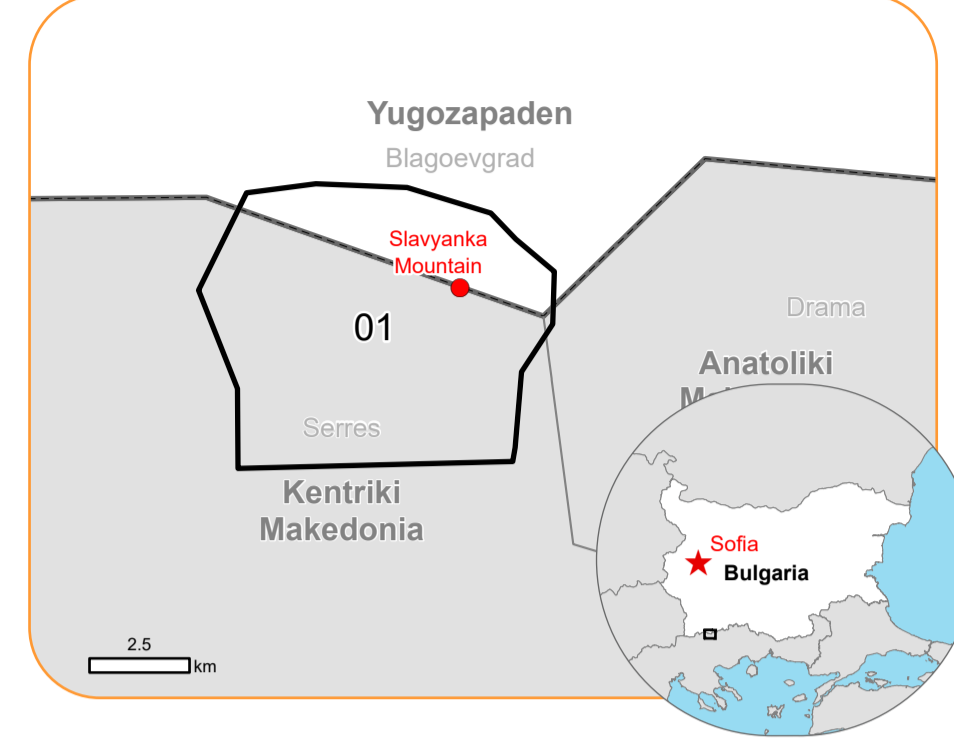


**EMSR740 - AOI01**  
**Wildfire in the Slavyanka Mountain, Bulgaria and Greece**  
**SLAVYANKA MOUNTAIN**

**Situation as of 02/08/2024 09:10 UTC**  
 Delineation MONIT06 - Overview map 01



**Active Flames 14 No.**  
**Fire Fronts 0.1 km**  
**Burnt area 962.3 ha**

**Potentially affected population**  
 ~ Not available

- Crisis Information**
- Active Flames
  - Fire Fronts
  - Burnt area
- General Information**
- Area of Interest
  - Not Analysed
- Administrative Boundaries**
- International Boundary
  - Province
  - Municipality
- Hydrography**
- Lake, River
- Transportation**
- Track

	Current		Forecast	
	Aug 02, 09:10 UTC	Aug 03, 09:10 UTC	Aug 04, 09:10 UTC	Aug 04, 09:10 UTC
Wind direction and speed	↻ 5 km/h	↻ 8 km/h	↻ 6 km/h	↻ 6 km/h
Temperature and relative Humidity	🌡️ 27° 🌧️ 37%	🌡️ 29° 🌧️ 35%	🌡️ 26° 🌧️ 42%	🌡️ 26° 🌧️ 42%

Data retrieved from ECMWF on Aug 02, 09:10 UTC. Calculated at: 41.392°N, 23.531°E.

**Event:** On 24 July 2024, a wildfire was located over a border area between Bulgaria and Greece, in the Slavyanka Mountain, a difficult-to-access mountainous terrain above 2 000 meters with hazard linked to an old minefield. Copernicus EMS Rapid Mapping is requested to provide wildfire extent mapping and monitoring.

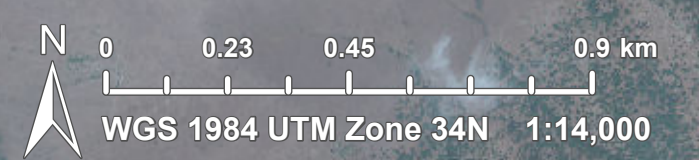
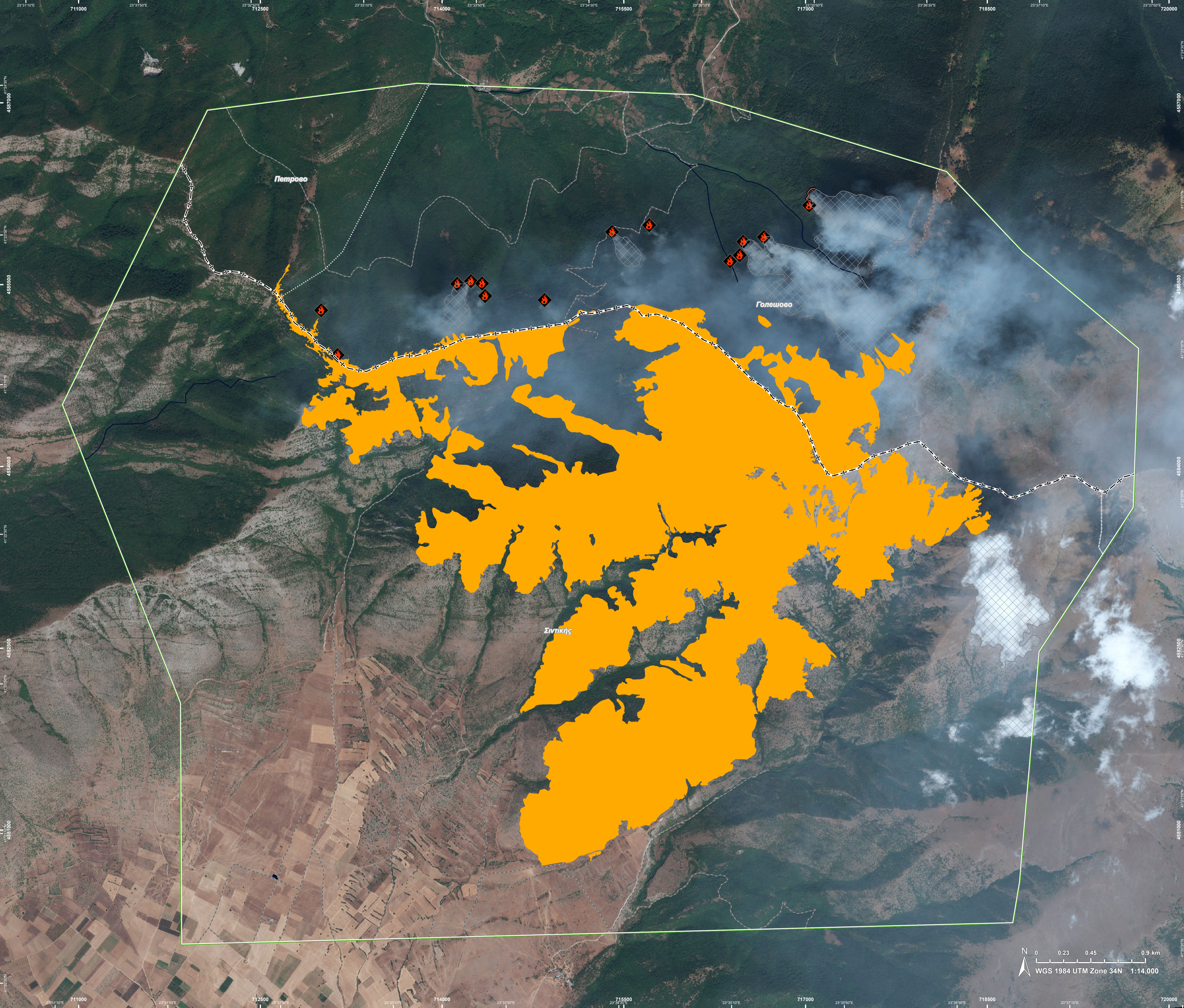
**Data sources and analysis:** Pre-event image: Sentinel-2A/B (2024) (acquired on 10/07/2024 at 09:15 UTC, resolution 10.0 m). Post-event image: GeoEye1 © Maxar Technologies, Inc. (2024), (acquired on 02/08/2024 at 09:10 UTC, resolution 2.0 m). All images are provided under COPERNICUS by the European Union and ESA, all rights reserved.

The thematic layer has been derived from post-event satellite image using by means of visual interpretation. Due to dense smoke, the burnt area delineation is not complete.

The current burnt area cumulates all burnt area extents from previous post-event products.

Map produced by Telespazio Iberica released by e-GEOS on the 02/08/2024.

Details on this activation and service conditions available through the QR code or at the link: <https://rapidmapping.emergency.copernicus.eu/EMSR740>



711000 23°31'10"E 712500 23°32'10"E 714000 23°33'10"E 715500 23°34'10"E 717000 23°35'10"E 718500 23°36'10"E 720000

4587000 41°23'30"N 4585500 41°22'30"N 4584000 41°21'30"N 4582500 41°20'30"N 4581000 41°19'30"N



Consequences within the AOI				
		Unit of measurement	Affected	Total in AOI
Burnt area		ha		962.3
Fire Fronts		km		0.1
Active Flames		No.		14
Estimated population		Number of inhabitants	NA	~ 20
Transportation	Cart Track	km	0.04	34.2
Land use	Open spaces with little or no vegetation	ha	472.7	1,678.5
	Forests	ha	298.3	2,249.8
	Shrub and/or herbaceous vegetation association	ha	188.7	624.9
	Arable land	ha	2.7	587.9
	Heterogeneous agricultural areas	ha	0	11.2

**Disclaimer:**

Full disclaimer and other helpful information available in the online manual:  
<https://emergency.copernicus.eu/mapping/ems/online-manual-rapid-mapping-products>  
 © European Union / Copernicus Emergency Management Service

**Data Access:**

All data displayed on the map(s), as well as the Physiography and Land Use - Land Cover layers, are available in the Crisis Information Package and the Base Layer Package (for reference data). The table above is available in editable format in the Crisis Information Package. All products and data are also available for download on the portal.

Access to the portal



**Estimated Population:**

Estimated population is based on Copernicus Global Human Settlement Layer (GHSL) dataset. Additional population datasets and analysis are available in the summary table.

**Data Sources:**

Base Vector Layers: OpenStreetMap © OpenStreetMap contributors (2024), Wikimapia.org, GeoNames 2015, Corine Land Cover (CLC) 2018, EuroBoundaryMap 2017 ©EuroGeographics.  
 Inset Maps: JRC 2013, GISCO 2010 © EuroGeographics, Natural Earth 2012, CCM River DB © EUJRC2007, GeoNames 2015.  
 Digital Elevation Model: FABDEM (ForestAndBuildingsremovedCopernicusDEM) removes building and tree height biases from the Copernicus GLO 30

