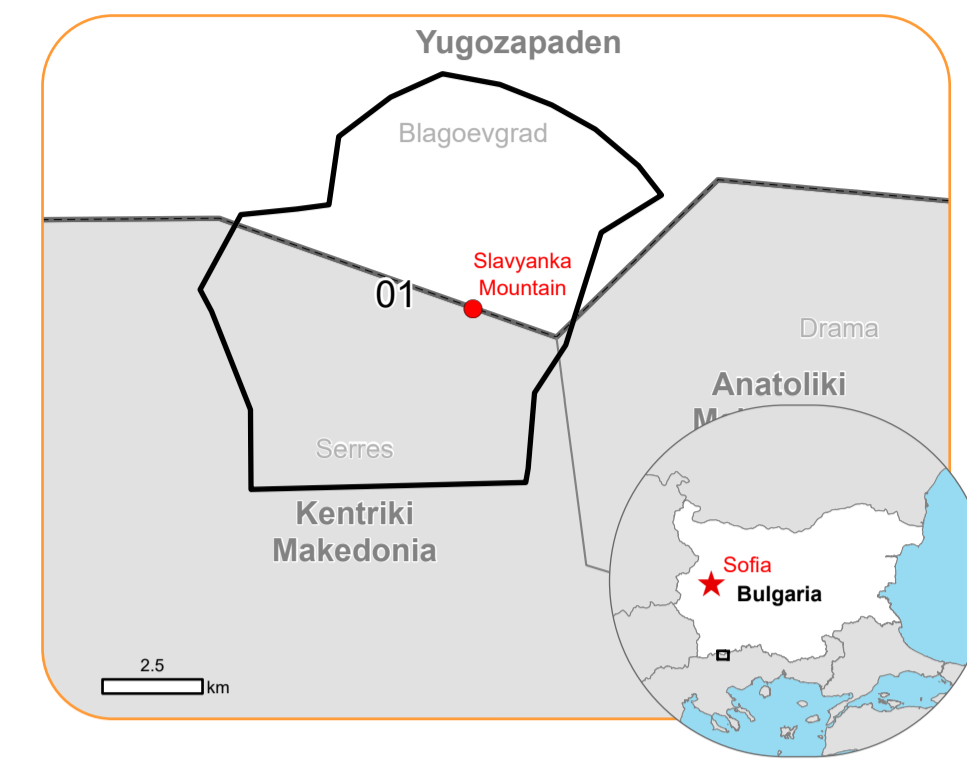


**EMSR740 - AOI01**  
 Wildfire in the Slavyanka Mountain, Bulgaria  
 and Greece  
**SLAVYANKA MOUNTAIN**

**Situation as of 07/08/2024 09:50 UTC**  
 Delineation MONIT10 - Overview map 01



**Active Flames 8 No.**  
**Fire Fronts 0.4 km**  
**Burnt area 1,132.9 ha**

**Potentially affected population**  
 ~ Not available

- Crisis Information**
- Active Flames
  - Fire Fronts
  - Burnt area
- General Information**
- Area of Interest
- Administrative Boundaries**
- International Boundary
  - Province
- Placenames**
- Municipality
  - Placename
- Built-Up Area**
- Residential
- Hydrography**
- Lake, River
- Transportation**
- Local road
  - Track

	Current		Forecast	
	Aug 07, 09:50 UTC	Aug 08, 10:00 UTC	Aug 09, 10:00 UTC	Aug 09, 10:00 UTC
Wind direction and speed	5 km/h	4 km/h	4 km/h	4 km/h
Temperature and relative Humidity	24° 34%	25° 44%	27° 44%	44%

Data retrieved from ECMWF on Aug 07, 09:50 UTC. Calculated at: 41.413°N, 23.623°E.

**Event:** On 24 July 2024, a wildfire was located over a border area between Bulgaria and Greece, in the Slavyanka Mountain, a difficult-to-access mountainous terrain above 2 000 meters with hazard linked to an old minefield. Copernicus EMS Rapid Mapping is requested to provide wildfire extent mapping and monitoring.

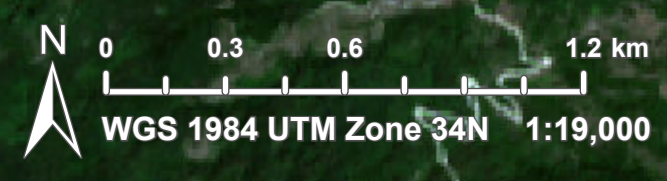
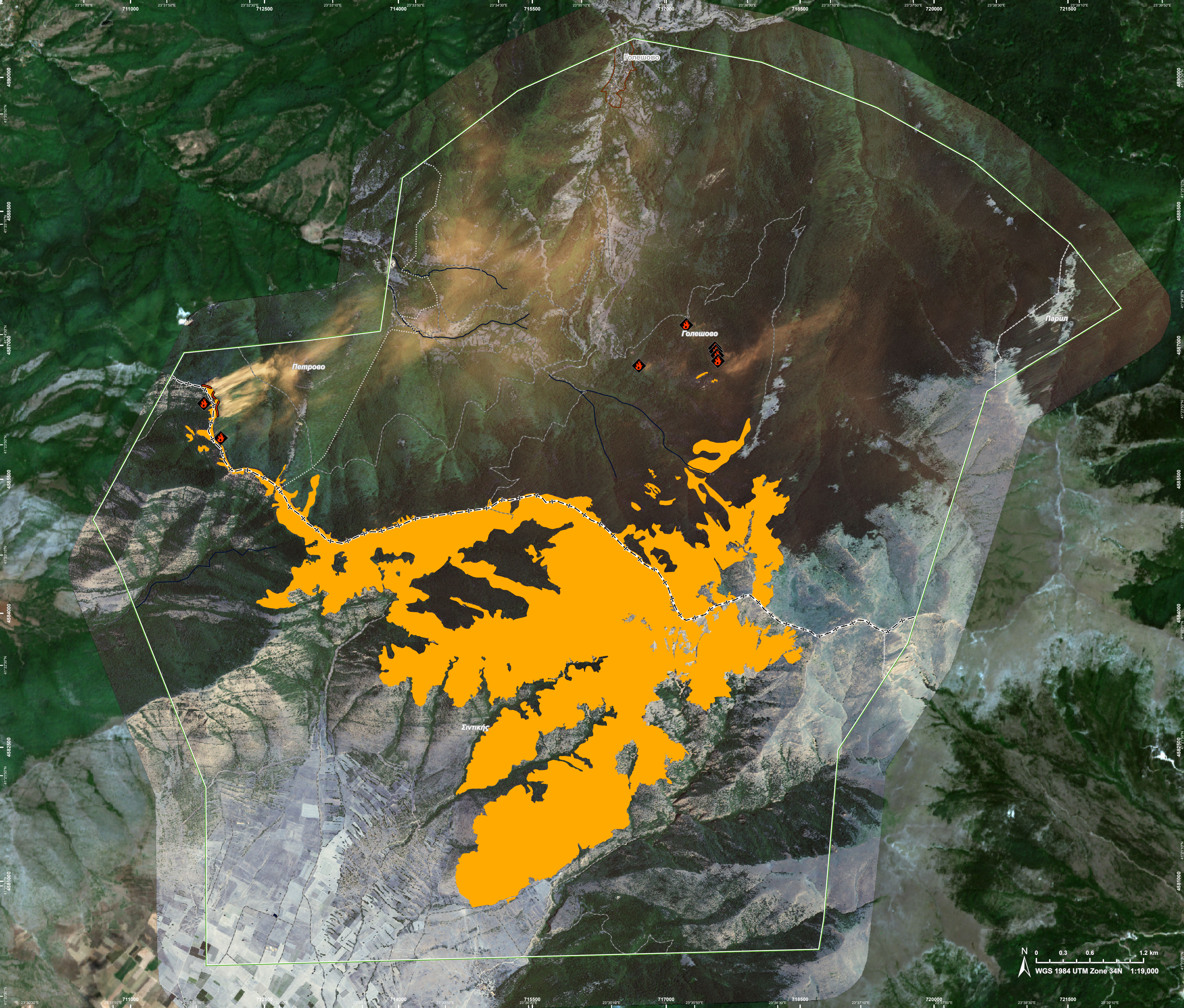
**Data sources and analysis:** Pre-event image: Sentinel-2A/B (2024) (acquired on 16/07/2024 at 09:15 UTC, resolution 10.0 m). Post-event image: WorldView-2 © Maxar Technologies, Inc. (2024). (acquired on 07/08/2024 at 09:50 UTC, resolution 2.0 m). All images are provided under COPERNICUS by the European Union and ESA, all rights reserved.

The thematic layer has been derived from post-event satellite image by means of visual interpretation. Due to dense smoke, the burnt area delineation is not complete.

The current burnt area cumulates all burnt area extents from previous post-event products.

Map produced by Telespazio Iberica released by e-GEOS on the 07/08/2024.

Details on this activation and service conditions available through the QR code or at the link: <https://rapidmapping.emergency.copernicus.eu/EMSR740>





Consequences within the AOI				
		Unit of measurement	Affected	Total in AOI
Burnt area		ha		1,132.9
Fire Fronts		km		0.4
Active Flames		No.		8
Estimated population		Number of inhabitants	NA	~ 100
Transportation	Local Road	km	0	1.3
	Cart Track	km	0.4	53.4
Land use	Open spaces with little or no vegetation	ha	489.3	1,687.5
	Forests	ha	351.1	3,973.0
	Shrub and/or herbaceous vegetation association	ha	289.7	1,327.8
	Arable land	ha	2.7	587.9
	Pastures	ha	0	36.2
	Heterogeneous agricultural areas	ha	0	128.5

**Disclaimer:**

Full disclaimer and other helpful information available in the online manual:  
<https://emergency.copernicus.eu/mapping/ems/online-manual-rapid-mapping-products>  
 © European Union / Copernicus Emergency Management Service

**Data Access:**

All data displayed on the map(s), as well as the Physiography and Land Use - Land Cover layers, are available in the Crisis Information Package and the Base Layer Package (for reference data). The table above is available in editable format in the Crisis Information Package. All products and data are also available for download on the portal.

Access to the portal



**Estimated Population:**

Estimated population is based on Copernicus Global Human Settlement Layer (GHSL) dataset. Additional population datasets and analysis are available in the summary table.

**Data Sources:**

Base Vector Layers: OpenStreetMap © OpenStreetMap contributors (2024), Wikimapia.org, GeoNames 2015, Corine Land Cover (CLC) 2018, EuroBoundaryMap 2017 ©EuroGeographics.  
 Inset Maps: JRC 2013, GISCO 2010 © EuroGeographics, Natural Earth 2012, CCM River DB © EUJRC2007, GeoNames 2015.  
 Digital Elevation Model: FABDEM (ForestAndBuildingsremovedCopernicusDEM) removes building and tree height biases from the Copernicus GLO 30

