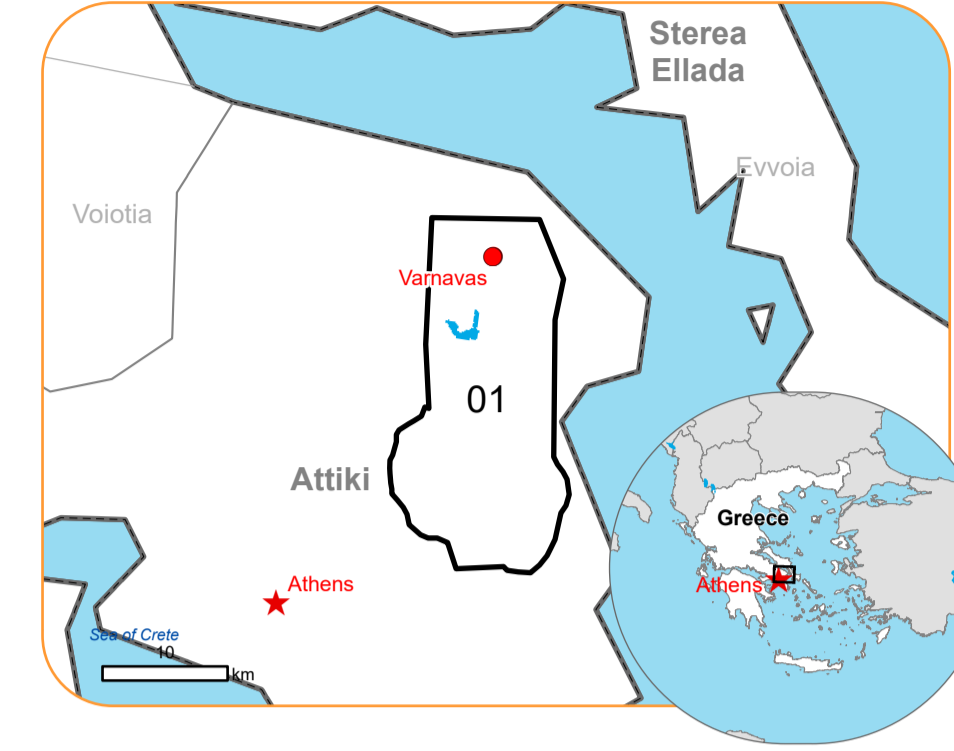


EMSR746 - AOI01
 Wildfire in Attica region, Greece
VARNAVAS

Situation as of 13/08/2024 09:33 UTC
 Delineation MONIT01 - Overview map 01



Active Flames 5 No.
 Burnt area 10 409.7 ha

Potentially affected population ~4 200

Potentially Affected Built-up and Transportations

Built-up 471.8 ha
Road 385.4 km
Airport or heliport 0.3 km

- | | |
|----------------------------------|------------------------------------|
| Crisis Information | Facilities |
| Active Flames | Long-distance pipelines or lines |
| Burnt area | Dam |
| Previous burnt area | Mining or extraction site |
| General Information | Power plant |
| Area of Interest | Sport and recreation constructions |
| Detail map | Dam |
| Administrative Boundaries | Airfield |
| Municipality | Heliport |
| Placenames | Transportation |
| Placename | Main road |
| Built-Up Area | Local road |
| Residential | Track |
| Non residential | Railway |
| Hydrography | Airfield runway |
| Lake, River | |

	Current			Forecast		
	13 August 09:33 UTC	14 August 09:33 UTC	15 August 09:33 UTC	14 August 09:33 UTC	15 August 09:33 UTC	15 August 09:33 UTC
Wind direction and speed	16 km/h	12 km/h	21 km/h	12 km/h	21 km/h	21 km/h
Temperature and relative Humidity	27° 31%	29° 44%	26° 62%	29° 44%	26° 62%	26° 62%

Data retrieved from ECMWF on August 13, 15:00 UTC. Calculated at: 38.190°N, 23.956°E.

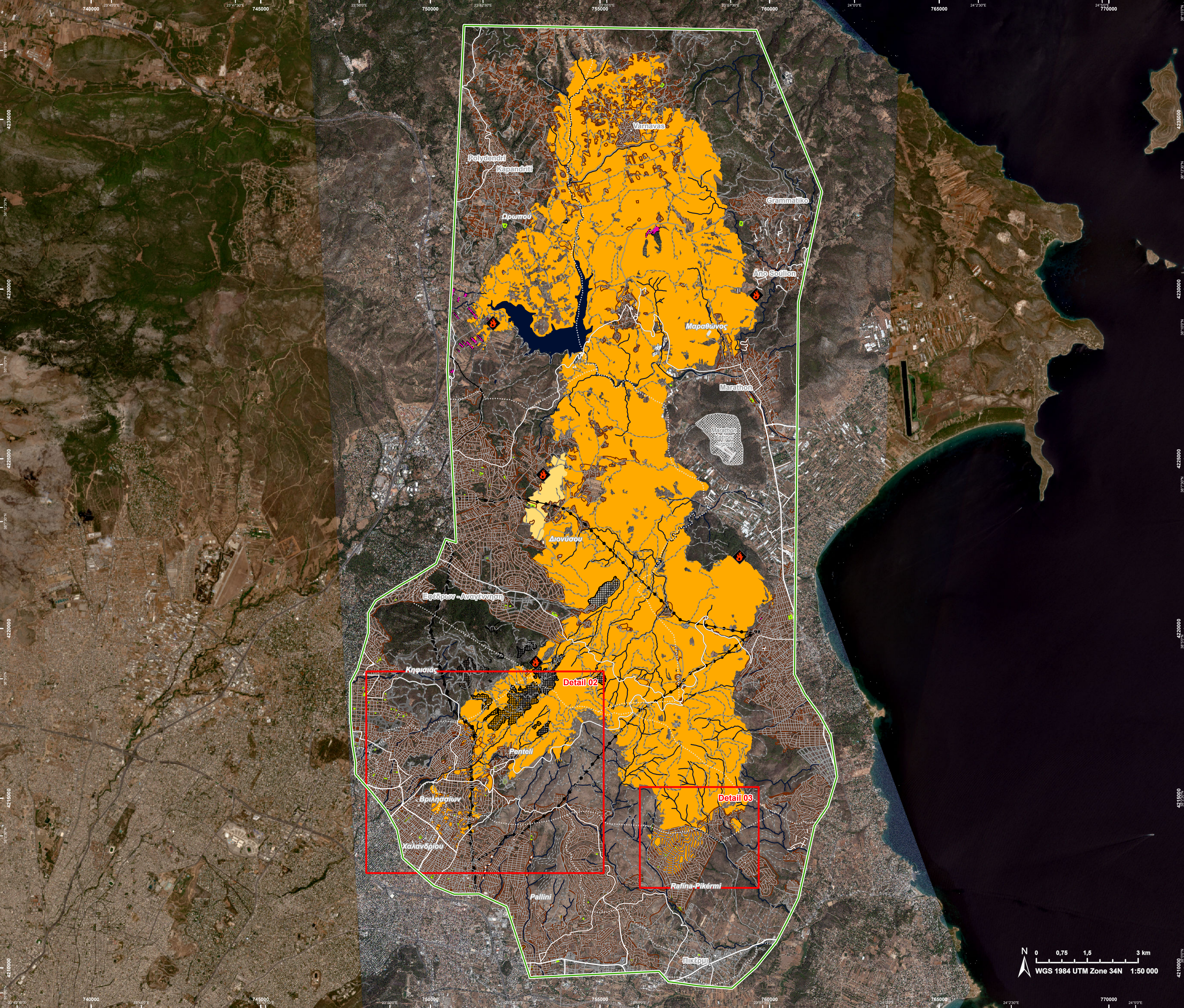
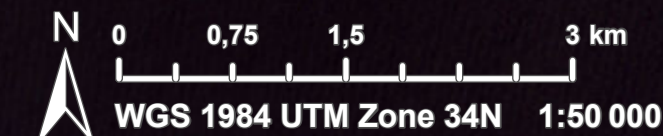
Event: On the 11 August 2024 at about 12:00, a wildfire is reported to have affected Attica region, near Varnavas village in Greece. The fire expanded rapidly due to strong winds. Residents of many villages had to be evacuated and a 112 cell-broadcasting message was sent for this purpose. 67 vehicles with 250 firefighters, 10 ground forces teams, 7 helicopters and 12 airplanes are used for fire suppression, assisted by municipality vehicles/machinery and volunteer organizations. Copernicus EMS Rapid Mapping is requested to provide initial rough estimation and fire extent emergency mapping.

Data sources and analysis: Pre-event image: Sentinel-2A/B (2024) (acquired on 07/08/2024 at 09:05 UTC, resolution 10 m).
 Post-event image: WorldView-2 © Maxar Technologies, Inc. (2024), (acquired on 13/08/2024 at 09:33 UTC, resolution 2.0 m). This image is used as background image.
 All images are provided under COPERNICUS by the European Union and ESA, all rights reserved.

The thematic layer has been derived from post-event satellite image by means of visual interpretation.
 The current burnt area cumulates all burnt area extents from previous post-event products.

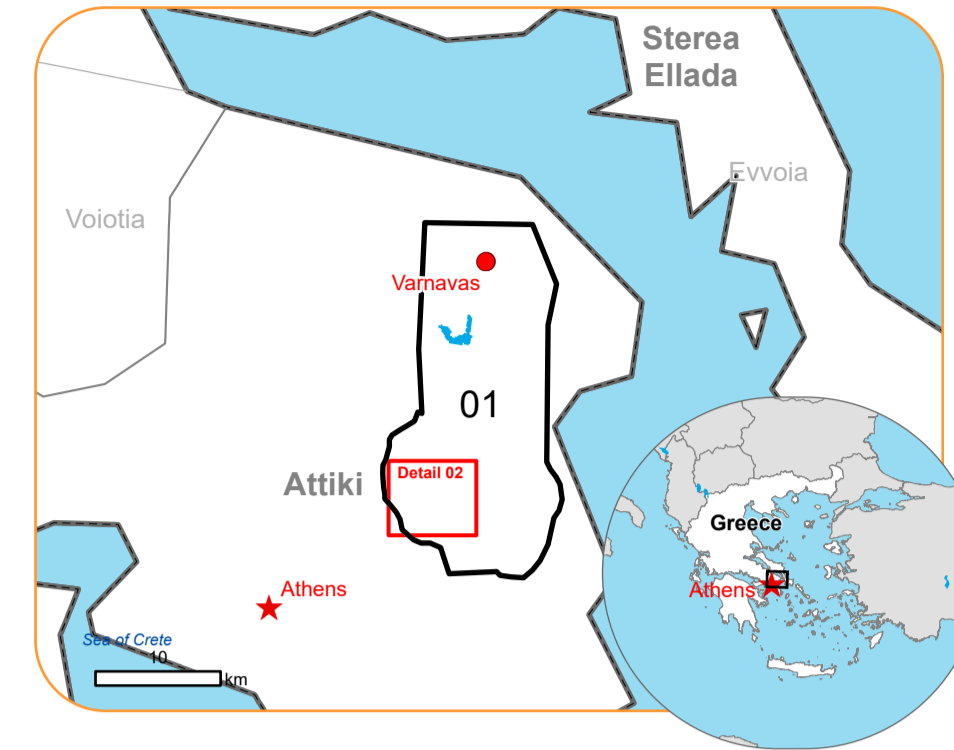
Map produced by CLS released by e-GEOS on the 13/08/2024.

Details on this activation and service conditions available through the QR code or at the link: <https://rapidmapping.emergency.copernicus.eu/EMSR746>



EMSR746 - AOI01
 Wildfire in Attica region, Greece
 VARNAVAS

Situation as of 13/08/2024 09:33 UTC
 Delineation MONIT01 - Detail map 02



- | | |
|----------------------------------|------------------------------------|
| Crisis Information | Facilities |
| Burnt area | Long-distance pipelines or lines |
| General Information | Dam |
| Area of Interest | Mining or extraction site |
| Administrative Boundaries | Sport and recreation constructions |
| Municipality | Helipad |
| Built-Up Area | Transportation |
| Residential | Main road |
| Non residential | Local road |
| Hydrography | Track |
| Lake, River | |

	Current		Forecast	
	13 August 09:33 UTC	14 August 09:33 UTC	15 August 09:33 UTC	
Wind direction and speed	16 km/h	12 km/h	21 km/h	
Temperature and relative Humidity	27° 31%	29° 44%	26° 62%	

Data retrieved from ECMWF on August 13, 15:00 UTC. Calculated at: 38.190°N, 23.956°E.

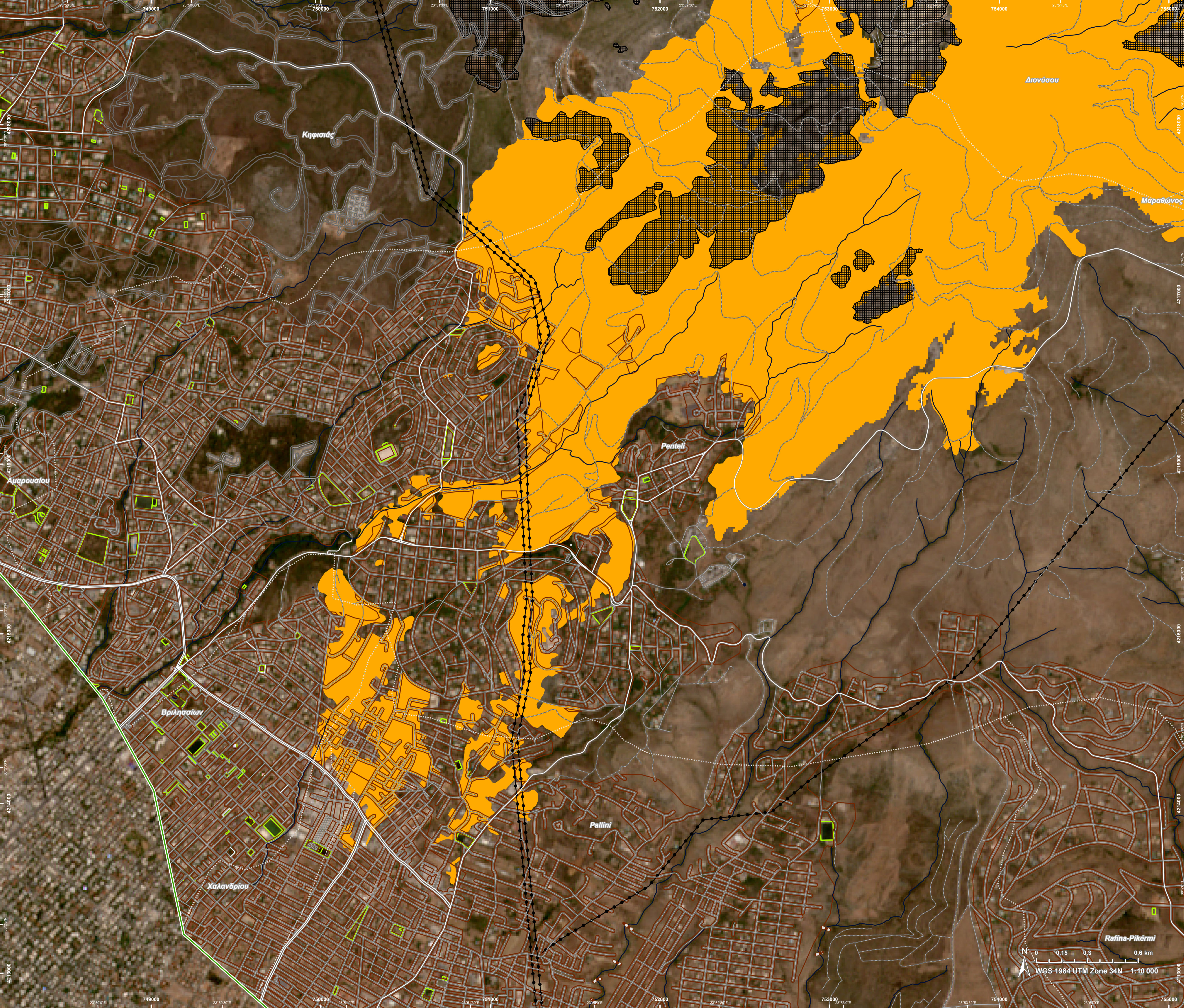
Event: On the 11 August 2024 at about 12:00, a wildfire is reported to have affected Attica region, near Varnavas village in Greece. The fire expanded rapidly due to strong winds. Residents of many villages had to be evacuated and a 112 cell-broadcasting message was sent for this purpose. 67 vehicles with 250 firefighters, 10 ground forces teams, 7 helicopters and 12 airplanes are used for fire suppression, assisted by municipality vehicles/machinery and volunteer organizations. Copernicus EMS Rapid Mapping is requested to provide initial rough estimation and fire extent emergency mapping.

Data sources and analysis: Pre-event image: Sentinel-2A/B (2024) (acquired on 07/08/2024 at 09:05 UTC, resolution 10.0 m). Post-event image: WorldView-2 © Maxar Technologies, Inc. (2024), (acquired on 13/08/2024 at 09:33 UTC, resolution 2.0 m). This image is used as background image. All images are provided under COPERNICUS by the European Union and ESA, all rights reserved.

The thematic layer has been derived from post-event satellite image by means of visual interpretation.

Map produced by CLS released by e-GEOS on the 13/08/2024.

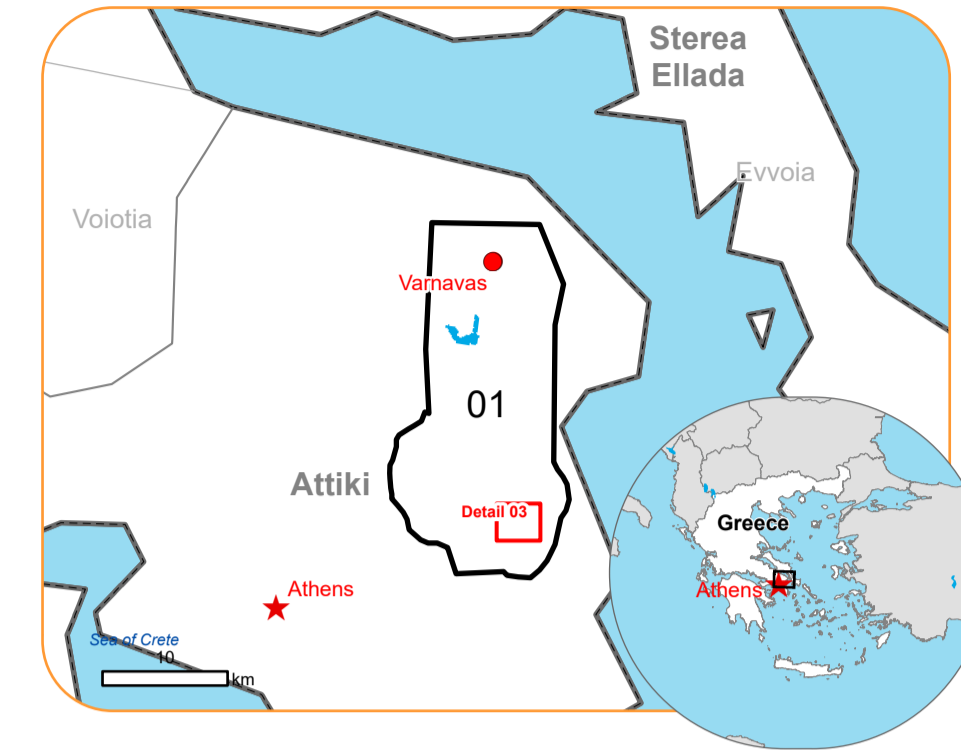
Details on this activation and service conditions available through the QR code or at the link: <https://rapidmapping.emergency.copernicus.eu/EMSR746>



0 0,15 0,3 0,6 km
 WGS 1984 UTM Zone 34N 1:10 000

EMSR746 - AOI01
 Wildfire in Attica region, Greece
 VARNAVAS

Situation as of 13/08/2024 09:33 UTC
 Delineation MONIT01 - Detail map 03



- Crisis Information**
- Burnt area
- General Information**
- Area of Interest
- Administrative Boundaries**
- Municipality
- Built-Up Area**
- Residential
- Sport and recreation constructions
- Transportation**
- Main road
 - Local road
 - Track

	Current		Forecast	
	13 August 09:33 UTC	14 August 09:33 UTC	14 August 09:33 UTC	15 August 09:33 UTC
Wind direction and speed	16 km/h	12 km/h	12 km/h	21 km/h
Temperature and relative humidity	27° 31%	29° 44%	26° 62%	26° 62%

Data retrieved from ECMWF on August 13, 15:00 UTC. Calculated at: 38.190°N, 23.956°E.

Event: On the 11 August 2024 at about 12:00, a wildfire is reported to have affected Attica region, near Varnavas village in Greece. The fire expanded rapidly due to strong winds. Residents of many villages had to be evacuated and a 112 cell-broadcasting message was sent for this purpose. 67 vehicles with 250 firefighters, 10 ground forces teams, 7 helicopters and 12 airplanes are used for fire suppression, assisted by municipality vehicles/machinery and volunteer organizations. Copernicus EMS Rapid Mapping is requested to provide initial rough estimation and fire extent emergency mapping.

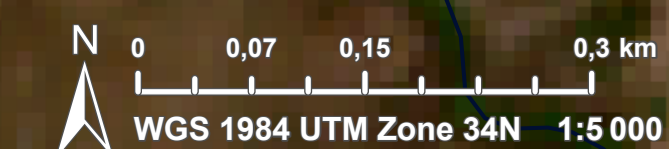
Data sources and analysis: Pre-event image: Sentinel-2A/B (2024) (acquired on 07/08/2024 at 09:05 UTC, resolution 10.0 m). Post-event image: WorldView-2 © Maxar Technologies, Inc. (2024), (acquired on 13/08/2024 at 09:33 UTC, resolution 2.0 m). This image is used as background image.

All images are provided under COPERNICUS by the European Union and ESA, all rights reserved.

The thematic layer has been derived from post-event satellite image by means of visual interpretation.

Map produced by CLS released by e-GEOS on the 13/08/2024.

Details on this activation and service conditions available through the QR code or at the link: <https://rapidmapping.emergency.copernicus.eu/EMSR746>



Consequences within the AOI		Unit of measurement	Affected	Total in AOI
Burnt area		ha		10 409,7
Active Flames		No.		5
Estimated population	Number of inhabitants		~ 4 200	~ 140 000
Built-up	Residential Buildings	ha	465,2	4 937,0
	Industrial buildings	ha	0	155,6
	Museums and libraries	ha	0	152,1
	Sports halls	ha	0,2	473,9
	Building block	ha	6,4	22,0
Transportation	Airfield runways	ha	0	139,2
	Helipad	ha	0	0,1
	Airfield runways	km	0,3	1,9
	Primary Road	km	1,1	47,2
	Secondary Road	km	21,2	111,2
	Local Road	km	83,8	1 370,3
	Cart Track	km	279,3	683,5
Long-distance railways	km	0	7,3	
Facilities	Dams	ha	0,8	0,9
	Constructions for mining or extraction	ha	93,0	261,5
	Power plant constructions	ha	7,0	20,3
	Sport and recreation constructions	ha	16,3	80,7
	Long-distance pipelines, communication and electricity lines	km	17,1	43,4
	Dams	km	0,1	0,6
Land use	Shrub and/or herbaceous vegetation association	ha	6 522,9	10 912,8
	Open spaces with little or no vegetation	ha	1 631,8	3 757,0
	Heterogeneous agricultural areas	ha	1 445,3	5 605,0
	Other	ha	337,8	7 136,1
	Arable land	ha	241,6	1 394,3
	Permanent crops	ha	114,6	718,1
	Inland wetlands	ha	46,5	64,3
	Forests	ha	46,4	669,5
	Pastures	ha	23,0	63,5

Disclaimer:

Full disclaimer and other helpful information available in the online manual:
<https://emergency.copernicus.eu/mapping/ems/online-manual-rapid-mapping-products>
 © European Union / Copernicus Emergency Management Service

Data Access:

All data displayed on the map(s), as well as the Physiography and Land Use - Land Cover layers, are available in the Crisis Information Package and the Base Layer Package (for reference data). The table above is available in editable format in the Crisis Information Package. All products and data are also available for download on the portal.

Access to the portal

**Estimated Population:**

Estimated population is based on Copernicus Global Human Settlement Layer (GHSL) dataset. Additional population datasets and analysis are available in the summary table.

Data Sources:

Base Vector Layers: OpenStreetMap © OpenStreetMap contributors (2024), Wikimapia.org, GeoNames 2015, Corine Land Cover (CLC) 2018, EuroBoundaryMap 2017 ©EuroGeographics.
 Inset Maps: JRC 2013, GISCO 2010 © EuroGeographics, Natural Earth 2012, CCM River DB © EUJRC2007, GeoNames 2015.
 Digital Elevation Model: COP-DEM-EEA-10-R product © DLR e.V. (2014-2018) and
 © Airbus Defence and Space GmbH (2020) provided under COPERNICUS by the European Union and ESA, all rights reserved.