

EMSR746 - AOI01
 Wildfire in Attica region, Greece
VARNAVAS

Situation as of 12/08/2024 09:05 UTC
 Delineation - Overview map 01



Active Flames 168 No.
Fire Fronts 23.9 km
Burnt area 8 594.2 ha

Potentially affected population ~1 800

Potentially Affected Built-up and Transportations

Built-up 157.8 ha
Road 275.4 km
Airport or heliport 0.3 km

- | | |
|----------------------------------|------------------------------------|
| Crisis Information | Facilities |
| Active Flames | Long-distance pipelines or lines |
| Fire Fronts | Dam |
| Burnt area | Mining or extraction site |
| Previous burnt area | Power plant |
| General Information | Sport and recreation constructions |
| Area of Interest | Dam |
| Administrative Boundaries | Airfield |
| Municipality | Heliport |
| Placenames | Transportation |
| Placename | Main road |
| Built-Up Area | Local road |
| Residential | Track |
| Non residential | Railway |
| Hydrography | Airfield runway |
| Lake, River | |

	Current		Forecast	
	12 August 09:05 UTC	13 August 09:05 UTC	13 August 09:05 UTC	14 August 09:05 UTC
Wind direction and speed	14 km/h	11 km/h	9 km/h	9 km/h
Temperature and relative Humidity	27° 40%	27° 31%	28° 33%	28° 33%

Data retrieved from ECMWF on August 12, 15:00 UTC. Calculated at: 38.190°N, 23.956°E.

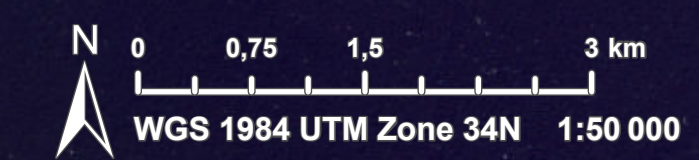
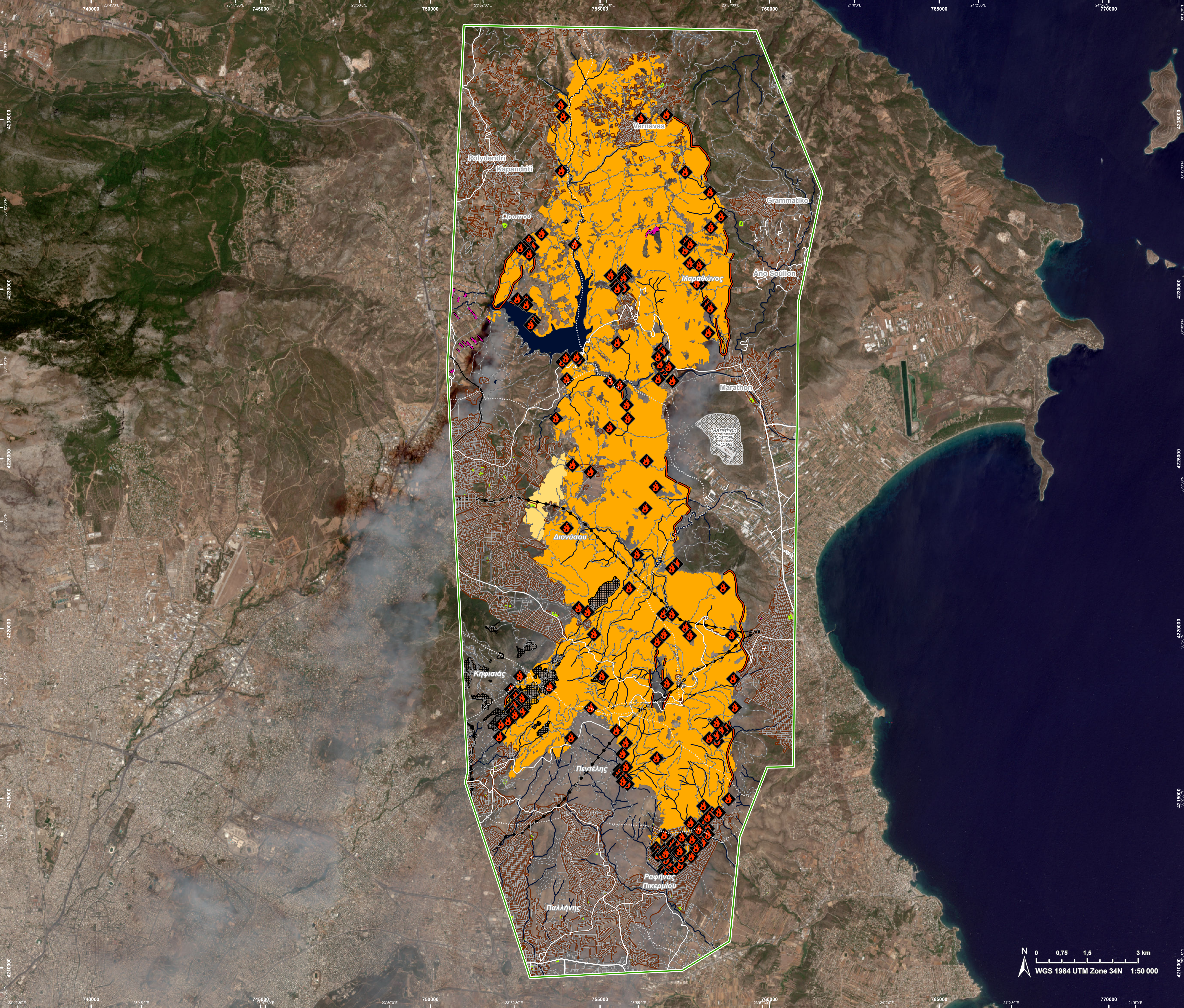
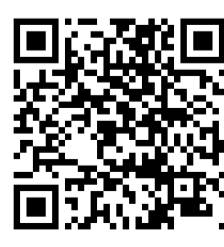
Event: On the 11 August 2024 at about 12:00, a wildfire is reported to have affected Attica region, near Varnavas village in Greece. The fire expanded rapidly due to strong winds. Residents of many villages had to be evacuated and a 112 cell-broadcasting message was sent for this purpose. 67 vehicles with 250 firefighters, 10 ground forces teams, 7 helicopters and 12 airplanes are used for fire suppression, assisted by municipality vehicles/machinery and volunteer organizations. Copernicus EMS Rapid Mapping is requested to provide initial rough estimation and fire extent emergency mapping.

Data sources and analysis: Pre-event image: Sentinel-2A/B (2024) (acquired on 07/08/2024 at 09:05 UTC, resolution 10 m).
 Post-event image: Sentinel-2A/B (2024), (acquired on 12/08/2024 at 09:05 UTC, resolution 10 m). This image is used as background image.
 All images are provided under COPERNICUS by the European Union and ESA, all rights reserved.

The thematic layer has been derived from post-event satellite image using a semi-automatic approach.

Map produced by CLS released by e-GEOS on the 12/08/2024.

Details on this activation and service conditions available through the QR code or at the link: <https://rapidmapping.emergency.copernicus.eu/EMSR746>



Consequences within the AOI		Unit of measurement	Affected	Total in AOI
Burnt area		ha		8 594,2
Fire Fronts		km		23,9
Active Flames		No.		168
Estimated population	Number of inhabitants		~ 1 800	~ 58 000
Built-up	Residential Buildings	ha	157,8	3 293,5
	Industrial buildings	ha	0	104,2
	Museums and libraries	ha	0	79,4
	Sports halls	ha	0	52,1
Transportation	Airfield runways	ha	0	139,2
	Helipad	ha	0	0,03
	Airfield runways	km	0,3	1,9
	Primary Road	km	1,1	35,3
	Secondary Road	km	14,9	80,6
	Local Road	km	49,8	907,3
	Cart Track	km	209,7	605,2
	Long-distance railways	km	0	7,3
Facilities	Dams	ha	0,1	0,9
	Constructions for mining or extraction	ha	39,2	253,0
	Power plant constructions	ha	2,2	20,3
	Sport and recreation constructions	ha	16,2	44,2
	Long-distance pipelines, communication and electricity lines	km	9,8	25,9
	Dams	km	0,1	0,4
Land use	Shrub and/or herbaceous vegetation association	ha	5 524,2	10 582,4
	Open spaces with little or no vegetation	ha	1 399,0	3 385,5
	Heterogeneous agricultural areas	ha	1 143,5	5 336,9
	Other	ha	192,7	4 366,5
	Arable land	ha	183,0	1 394,3
	Permanent crops	ha	82,7	571,5
	Forests	ha	28,1	386,6
	Pastures	ha	20,5	63,5
	Inland wetlands	ha	20,4	64,3

Disclaimer:

Full disclaimer and other helpful information available in the online manual:
<https://emergency.copernicus.eu/mapping/ems/online-manual-rapid-mapping-products>
 © European Union / Copernicus Emergency Management Service

Data Access:

All data displayed on the map(s), as well as the Physiography and Land Use - Land Cover layers, are available in the Crisis Information Package and the Base Layer Package (for reference data). The table above is available in editable format in the Crisis Information Package. All products and data are also available for download on the portal.

Access to the portal

**Estimated Population:**

Estimated population is based on Copernicus Global Human Settlement Layer (GHSL) dataset. Additional population datasets and analysis are available in the summary table.

Data Sources:

Base Vector Layers: OpenStreetMap © OpenStreetMap contributors (2024), Wikimapia.org, GeoNames 2015, Corine Land Cover (CLC) 2018, EuroBoundaryMap 2017 ©EuroGeographics.
 Inset Maps: JRC 2013, GISCO 2010 © EuroGeographics, Natural Earth 2012, CCM River DB © EUJRC2007, GeoNames 2015.
 Digital Elevation Model: COP-DEM-EEA-10-R product © DLR e.V. (2014-2018) and
 © Airbus Defence and Space GmbH (2020) provided under COPERNICUS by the European Union and ESA, all rights reserved.