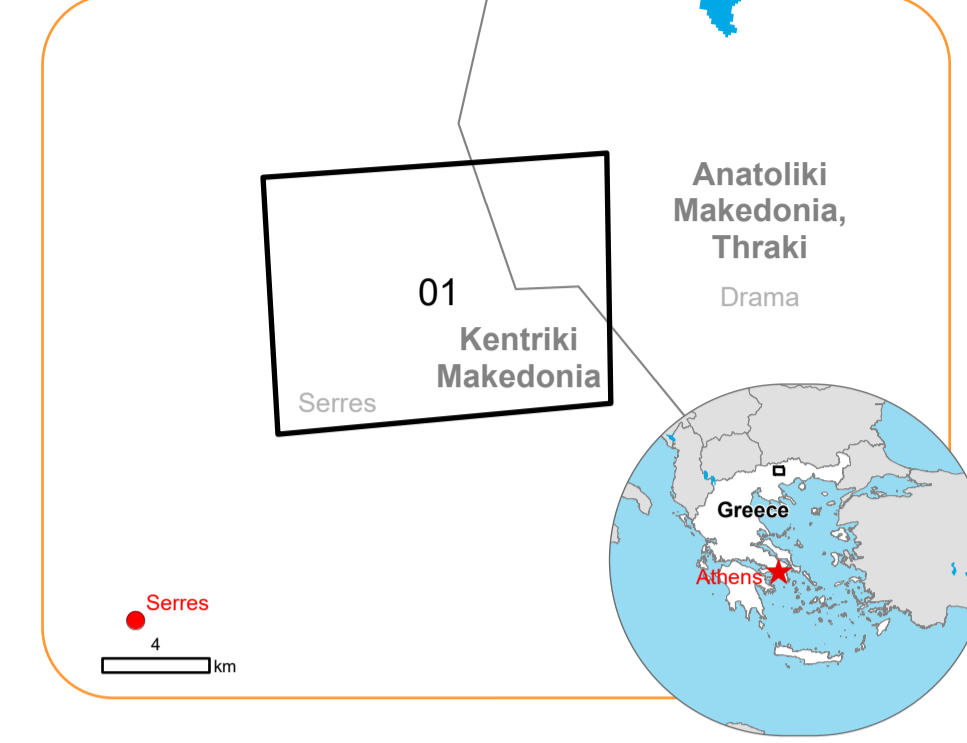


**EMSR747 - AOI01**  
**Wildfire in Greece**  
**SERRES**

**Situation as of 15/08/2024 09:19 UTC**  
 Delineation - Overview map 01



**Active Flames**  
 9 No.  
**Burnt area**  
 1 161.6 ha

**Potentially affected population**  
 NA

**Potentially Affected Built-up and Transportations**

**Road**  
 0.3 km

- Crisis Information**
  - Active Flames
- Crisis Information**
  - Burnt area
- General Information**
  - Area of Interest
  - Detail map
  - Not Analysed
- Administrative Boundaries**
  - Province
  - Municipality
- Built-Up Area**
  - Residential
  - Unclassified
- Hydrography**
  - Lake, River
- Transportation**
  - Local road
  - Track

	Current		Forecast	
	15 August 09:19 UTC	16 August 09:19 UTC	16 August 09:19 UTC	17 August 09:19 UTC
<b>Wind direction and speed</b>	5 km/h	5 km/h	5 km/h	5 km/h
<b>Temperature and relative Humidity</b>	27° 43%	27° 45%	25° 51%	

Data retrieved from ECMWF on August 15, 14:00 UTC. Calculated at: 23°43'19"E 41°11'35"N.

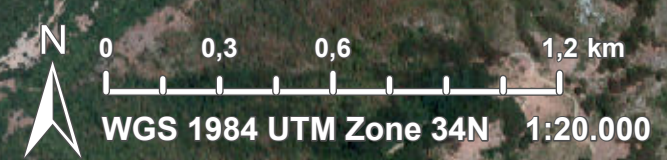
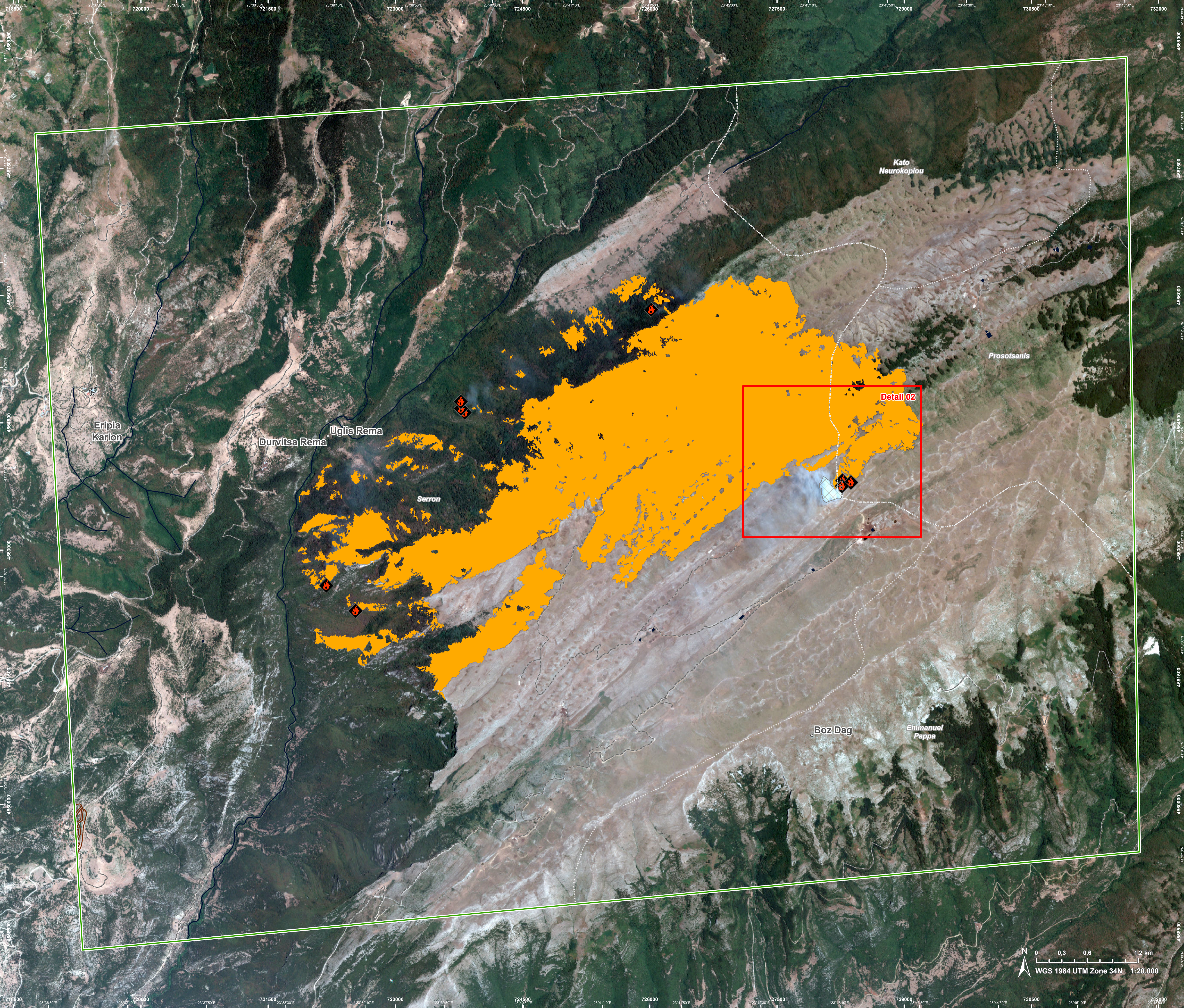
**Event:** On the 9 August 2024 at 15:30, a wildfire is reported to have affected Central Macedonia, in Greece. The event started due to lightnings north of Chionochori village and it is still on-going. Due to the difficult terrain and high-altitude, 6 helicopters and 2 aircrafts were mobilized to suppress the fire. Also 23 vehicles with 56 firefighters and 36 ground forces have been used for fire suppression, assisted by municipality vehicles/machinery and volunteer organizations. Copernicus EMS Rapid Mapping is requested to provide fire extent emergency mapping.

**Data sources and analysis:** Pre-event image: Sentinel-2A/B (2024) (acquired on 16/07/2024 at 09:15 UTC, resolution 10 m). Post-event image: Pleiades-1A/1B © CNES (2024), distributed by Airbus DS (acquired on 15/08/2024 at 09:19 UTC, resolution 2.0 m). This image is used as background image. All images are provided under COPERNICUS by the European Union and ESA, all rights reserved.

The thematic layer has been derived from post-event satellite image using a semi-automatic approach (Due to dense smoke, the burnt area delineation is not complete).

Map produced by ITHACA released by e-GEOS on the 15/08/2024.

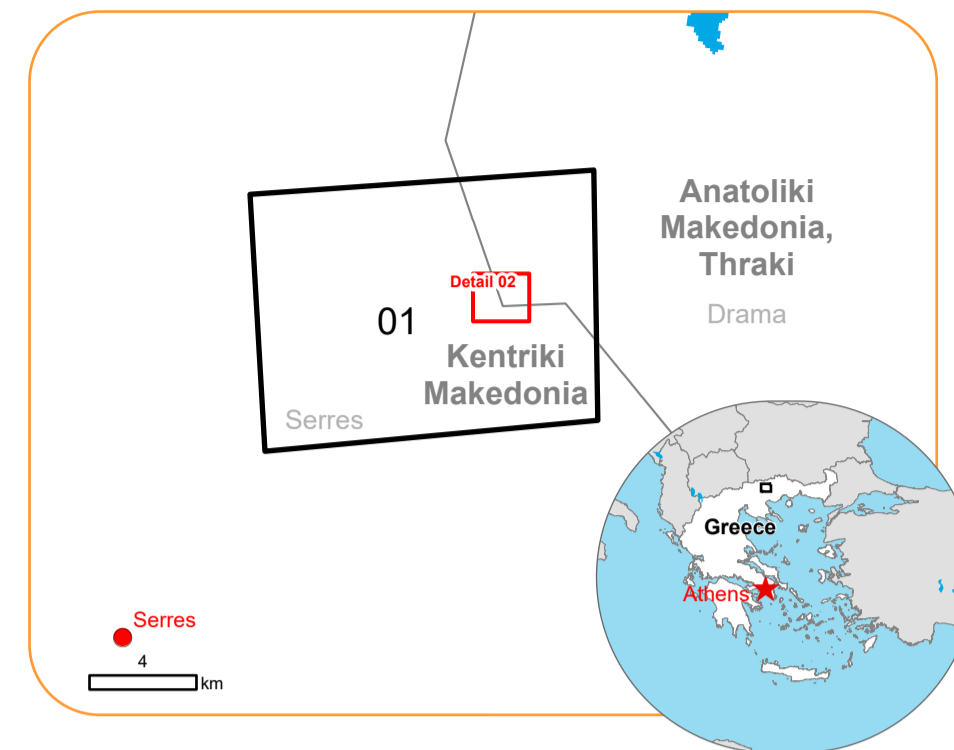
Details on this activation and service conditions available through the QR code or at the link: <https://rapidmapping.emergency.copernicus.eu/EMSR747>





Situation as of 15/08/2024 09:19 UTC

Delineation - Detail map 02



**Crisis Information**

Active Flames

**Crisis Information**

Burnt area

**General Information**

Area of Interest

Not Analysed

**Administrative Boundaries**

Province

**Hydrography**

Lake, River

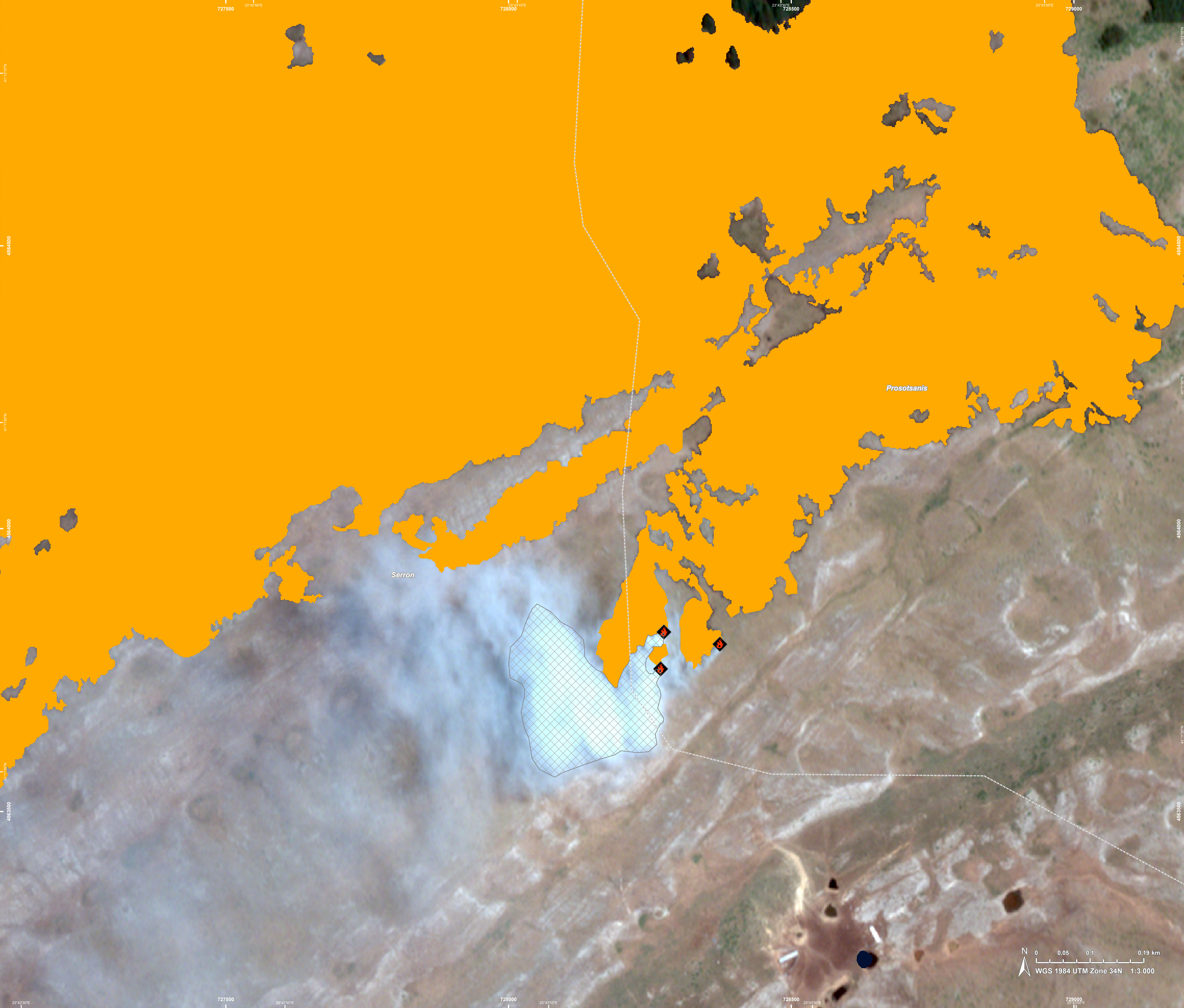
**Event:** On the 9 August 2024 at 15:30, a wildfire is reported to have affected Central Macedonia, in Greece. The event started due to lightnings north of Chionochori village and it is still on-going. Due to the difficult terrain and high-altitude, 6 helicopters and 2 aircrafts were mobilized to suppress the fire. Also 23 vehicles with 56 firefighters and 36 ground forces have been used for fire suppression, assisted by municipality vehicles/machinery and volunteer organizations. Copernicus EMS Rapid Mapping is requested to provide fire extent emergency mapping.

**Data sources and analysis:** Pre-event image: Sentinel-2A/B (2024) (acquired on 16/07/2024 at 09:15 UTC, resolution 10 m). Post-event image: Pléiades-1A/B © CNES (2024), distributed by Airbus DS (acquired on 15/08/2024 at 09:19 UTC, resolution 2.0 m). This image is used as background image. All images are provided under COPERNICUS by the European Union and ESA, all rights reserved.

The thematic layer has been derived from post-event satellite image using a semi-automatic approach (Due to dense smoke, the burnt area delineation is not complete).

Map produced by ITHACA released by e-GEOS on the 15/08/2024.

Details on this activation and service conditions available through the QR code or at the link: <https://rapidmapping.emergency.copernicus.eu/EMSR747>



Consequences within the AOI				
		Unit of measurement	Affected	Total in AOI
Burnt area		ha		1.161.6
Active Flames		No.		9
Estimated population		Number of inhabitants	NA	~ 60
Built-up	Residential Buildings	ha	0	3.7
	Unclassified	ha	0	0.3
Transportation	Local Road	km	0	10.8
	Cart Track	km	0.3	96.9
Land use	Shrub and/or herbaceous vegetation association	ha	1.077.0	8.313.0
	Forests	ha	84.5	3.726.6
	Pastures	ha	0	0.2
	Heterogeneous agricultural areas	ha	0	16.0

**Disclaimer:**

Full disclaimer and other helpful information available in the online manual:  
<https://emergency.copernicus.eu/mapping/ems/online-manual-rapid-mapping-products>  
 © European Union / Copernicus Emergency Management Service

**Data Access:**

All data displayed on the map(s), as well as the Physiography and Land Use - Land Cover layers, are available in the Crisis Information Package and the Base Layer Package (for reference data). The table above is available in editable format in the Crisis Information Package. All products and data are also available for download on the portal.

Access to the portal



**Estimated Population:**

Estimated population is based on Copernicus Global Human Settlement Layer (GHSL) dataset. Additional population datasets and analysis are available in the summary table.

**Data Sources:**

Base Vector Layers: OpenStreetMap © OpenStreetMap contributors (2024), Wikimapia.org, GeoNames 2015, Corine Land Cover (CLC) 2018, EuroBoundaryMap 2017 ©EuroGeographics.  
 Inset Maps: JRC 2013, GISCO 2010 © EuroGeographics, Natural Earth 2012, CCM River DB © EUJRC2007, GeoNames 2015.  
 Digital Elevation Model: FABDEM (ForestAndBuildingsremovedCopernicusDEM) removes building and tree height biases from the Copernicus GLO 30

