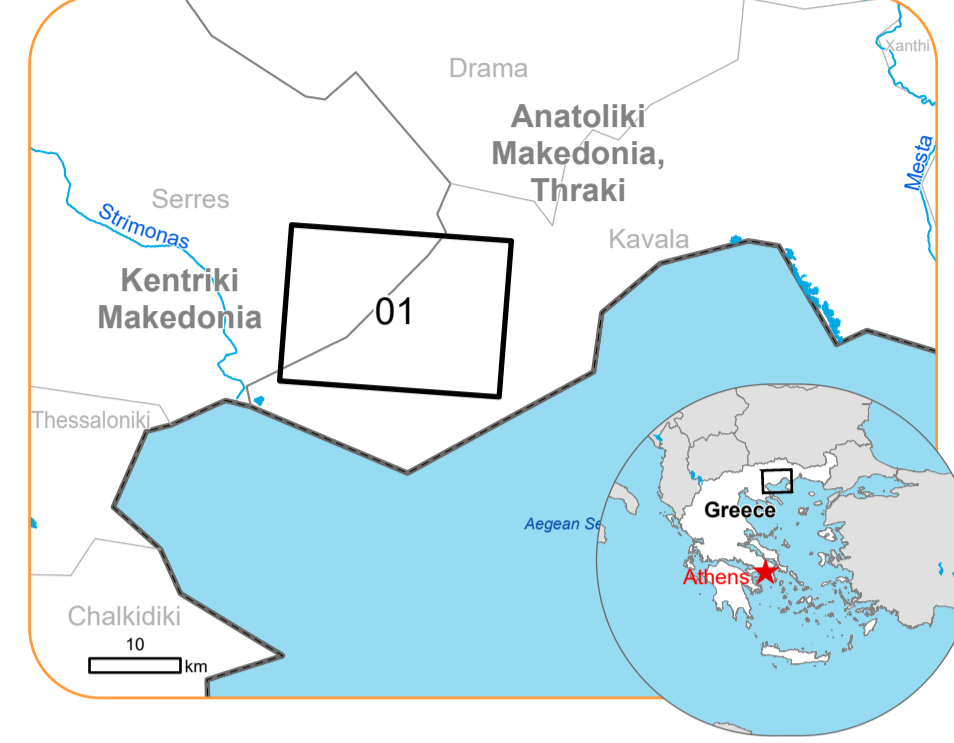


**EMSR749 - AOI01**  
**Wildfire in Greece**  
**PAGGAIO**

**Situation as of 25/08/2024 09:42 UTC**  
 Delineation - Overview map 01



**Active Flames 3 No.**  
**Burnt area 760.2 ha**  
**Potentially affected population ~ 10**

Potentially Affected Built-up and Transportations

**Road**  
 1.0 km

- |   |                                    |
|---|------------------------------------|
| <b>Crisis Information</b>                 | <b>Hydrography</b>                 |
| Active Flames                             | Lake, River                        |
| <b>Crisis Information</b>                 | <b>Facilities</b>                  |
| Burnt area                                | Long-distance pipelines or lines   |
| <b>General Information</b>                | Mining or extraction site          |
| Area of Interest                          | Power plant                        |
| Image Footprint                           | Sport and recreation constructions |
| Not Analysed                              | <b>Transportation</b>              |
| <b>Administrative Boundaries</b>          | Highway                            |
| Province                                  | Main road                          |
| <b>Built-Up Area</b>                      | Local road                         |
| Residential                               | Track                              |
| Non residential                           |                                    |
| School, university and research buildings |                                    |

	Current		Forecast	
	25 August 09:42 UTC	26 August 09:42 UTC	26 August 09:42 UTC	27 August 09:42 UTC
Wind direction and speed	4 km/h	6 km/h	6 km/h	1 km/h
Temperature and relative Humidity	31°  40%	30°  35%	29°  35%	29°  39%

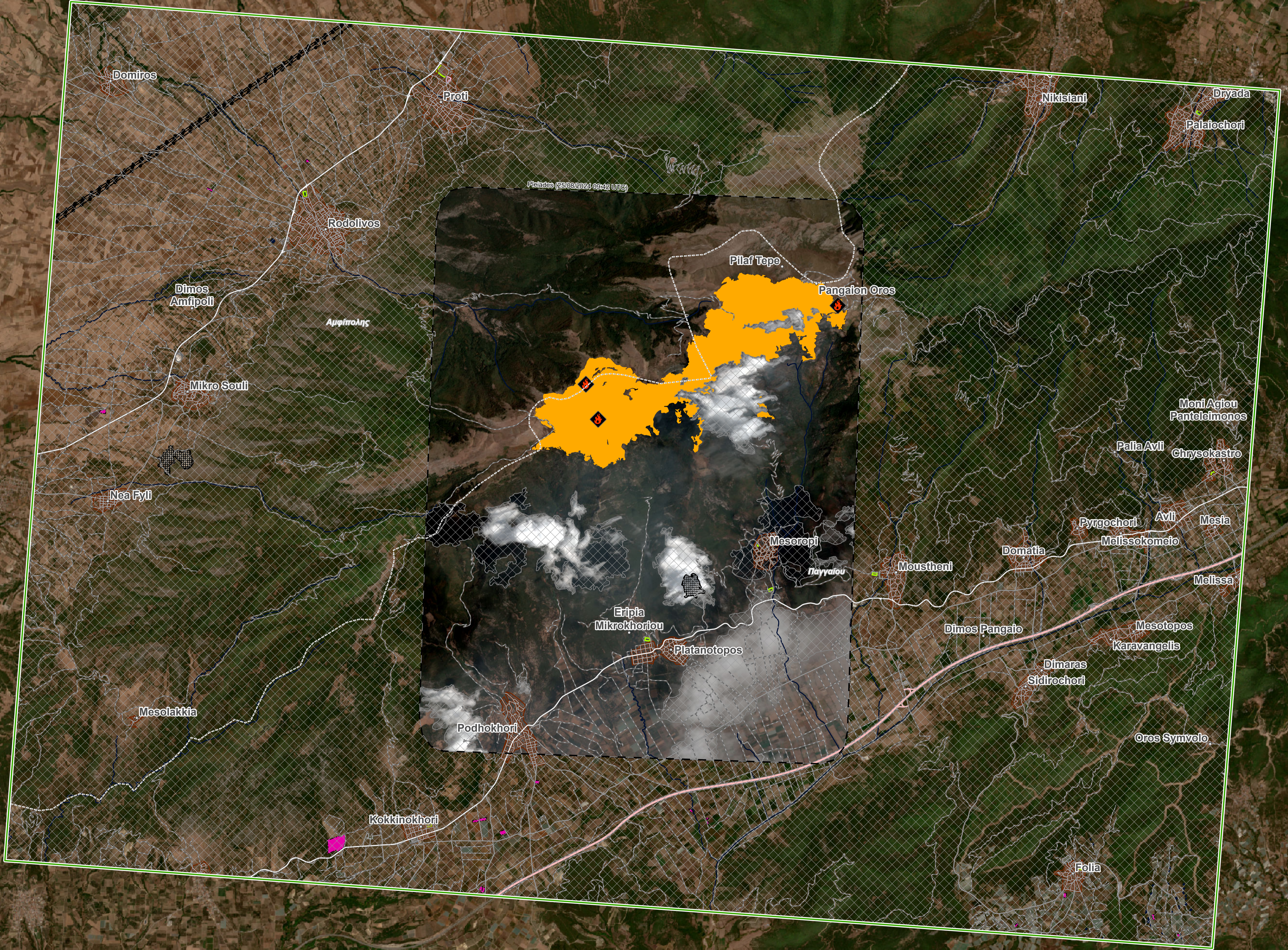
**Event:** A wildfire started near the ridge of Paggaio mountain, 25 Km west from Kavala, East Macedonia and Thrace region, burning mountain meadows and beech forest, between the villages Rodolivos and Mesoropi. The fire expanded rapidly due to the strong winds the steep relief and the access difficulty. 31 vehicles with 63 firefighters, 145 ground forces 5 helicopters and 15 airplanes were used for fire suppression, assisted by municipality vehicles/machinery and volunteer organizations. The fire is currently out of control, but no villages are threatened. Fire suppression operations are still ongoing. Copernicus EMS Rapid Mapping is requested to provide initial rough estimation and fire extent.

**Data sources and analysis:** Pre-event image: Sentinel-2A/B (2024) (acquired on 17/08/2024 at 09:05 UTC, resolution 10 m). Post-event image: Pléiades-1A/B © CNES (2024), distributed by Airbus DS (acquired on 25/08/2024 at 09:42 UTC, resolution 2 m). This image is used as background image. All images are provided under COPERNICUS by the European Union and ESA, all rights reserved.

The thematic layer has been derived from post-event satellite image by means of visual interpretation. Due to clouds coverage, the burnt area delineation is not complete.

Map produced by ITHACA released by e-GEOS on the 25/08/2024.

Details on this activation and service conditions available through the QR code or at the link: <https://rapidmapping.emergency.copernicus.eu/EMSR749>



**Scale:** 1:38.000  
 WGS 1984 UTM Zone 35N

Consequences within the AOI		Unit of measurement	Affected	Total in AOI
Burnt area		ha		760,2
Active Flames		No.		3
Estimated population		Number of inhabitants	~ 10	~ 12.000
Built-up	Residential Buildings	ha	0	537,2
	Industrial buildings	ha	0	3,0
	School, university and research buildings	ha	0	0,9
	Cemetery	ha	0	2,4
Transportation	Highways	km	0	34,4
	Primary Road	km	0	14,6
	Secondary Road	km	0	24,3
	Local Road	km	0	280,4
	Cart Track	km	1,0	949,7
Facilities	Constructions for mining or extraction	ha	0	33,5
	Power plant constructions	ha	0	17,1
	Sport and recreation constructions	ha	0	8,0
	Long-distance pipelines, communication and electricity lines	km	0	21,3
Land use	Open spaces with little or no vegetation	ha	711,9	2.200,9
	Shrub and/or herbaceous vegetation association	ha	37,8	12.286,8
	Forests	ha	10,5	11.814,3
	Arable land	ha	0	7.504,1
	Permanent crops	ha	0	724,1
	Pastures	ha	0	83,0
	Heterogeneous agricultural areas	ha	0	4.473,4
	Other	ha	0	2.497,5

**Disclaimer:**

Full disclaimer and other helpful information available in the online manual:

<https://emergency.copernicus.eu/mapping/ems/online-manual-rapid-mapping-products>

© European Union / Copernicus Emergency Management Service

**Data Access:**

All data displayed on the map(s), as well as the Physiography and Land Use - Land Cover layers, are available in the Crisis Information Package and the Base Layer Package (for reference data).

The table above is available in editable format in the Crisis Information Package.

All products and data are also available for download on the portal.

Access to the portal



**Estimated Population:**

Estimated population is based on Copernicus Global Human Settlement Layer (GHSL) dataset.

Additional population datasets and analysis are available in the summary table.

**Data Sources:**

Base Vector Layers: OpenStreetMap © OpenStreetMap contributors (2024), Wikimapia.org, GeoNames 2015,

Corine Land Cover (CLC) 2018, EuroBoundaryMap 2017 ©EuroGeographics.

Inset Maps: JRC 2013, GISCO 2010 © EuroGeographics, Natural Earth 2012, CCM River DB © EUJRC2007, GeoNames 2015.

Digital Elevation Model: FABDEM (ForestAndBuildingsremovedCopernicusDEM) removes building and tree height biases from the Copernicus GLO 30

