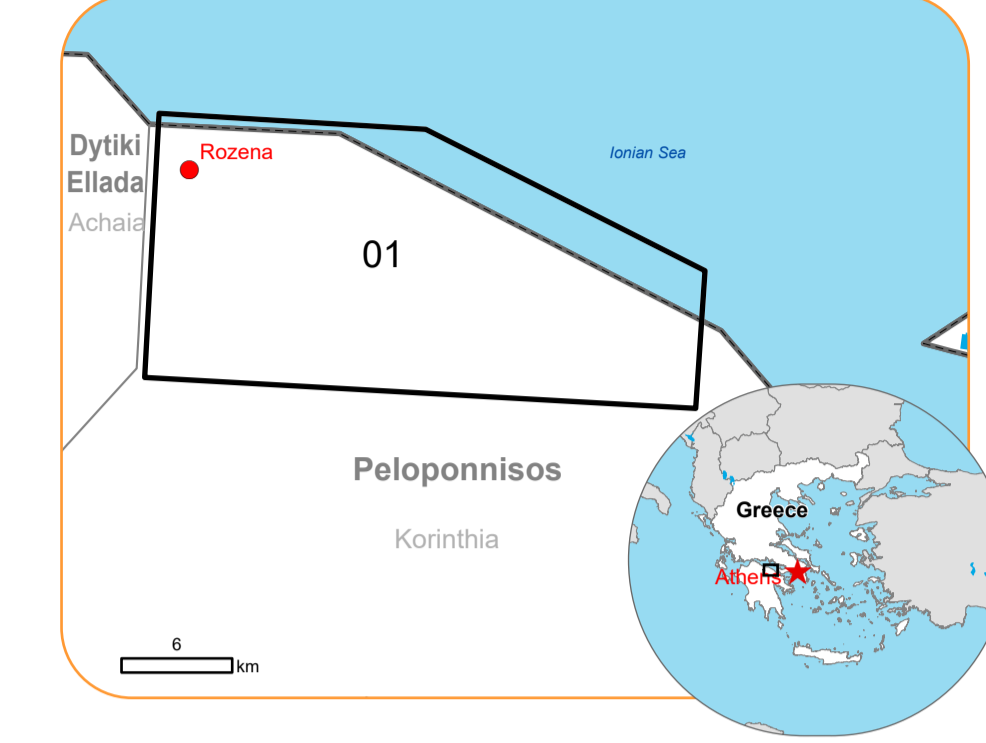


EMSR767 - AOI01
 Wildfire in Greece
 ROZENA

Situation as of 02/10/2024 09:19 UTC
 Delineation MONIT02 - Overview map 01



Active Flames 2 No.
 Burnt area 7 140.2 ha

Potentially affected population ~ 450

Potentially Affected Built-up and Transportations

Road 220.6 km
Built-Up 27.8 ha

- | | |
|----------------------------------|------------------------------------|
| Crisis Information | Hydrography |
| Active Flames | Lake, River |
| Burnt area | Facilities |
| General Information | Long-distance pipelines or lines |
| Area of Interest | Water or Aquatic infrastructure |
| Detail map | Mining or extraction site |
| Not Analysed | Power plant |
| Administrative Boundaries | Sport and recreation constructions |
| Province | Water or Aquatic infrastructure |
| Municipality | Transportation |
| Placenames | Highway |
| Placename | Main road |
| Built-Up Area | Local road |
| Residential | Track |
| Non residential | Railway |

	Current		Forecast	
	02 October 09:19 UTC	03 October 09:19 UTC	03 October 09:19 UTC	04 October 09:19 UTC
Wind direction and speed	3 km/h	1 km/h	1 km/h	1 km/h
Temperature and relative Humidity	17° 68%	19° 57%	24° 56%	24° 56%

Data retrieved from ECMWF on October 02, 16:08 UTC. Calculated at: 38°42'N 22°29'57"E

Event: On the morning of 29 September 2024 at 08:00 UTC, a serious wildfire started in the Northern Peloponnese, at Corinthia near Rozena village, Greece. The event is on-going and spreading. A large number of firefighters (223), volunteers, fire engines (63), water tankers (4), construction machinery (2), airplanes (7) and helicopters (10) were mobilized to suppress the fire. The residents of Pyrgos and Ellinico villages had to be evacuated, and a 112 cell-broadcasting message was sent for this purpose. Copernicus EMS Rapid Mapping is requested to provide wildfire extent and monitoring emergency mapping.

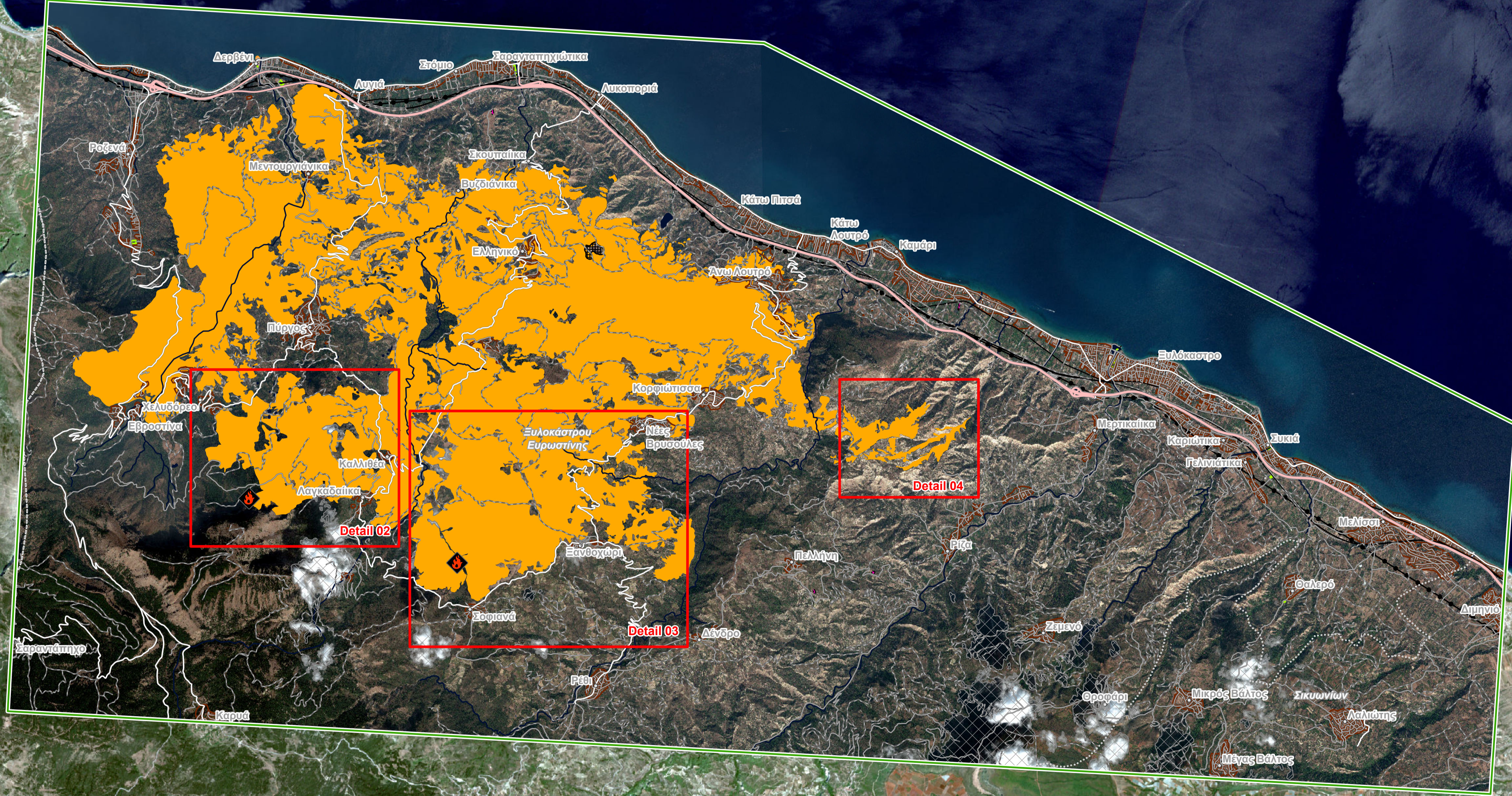
Data sources and analysis: Pre-event image: SPOT6 © Airbus DS (2023) (acquired on 15/07/2023 at 08:46 UTC, resolution 1.5 m). Post-event image: GeoEye © Maxar Technologies, Inc. (2024), (acquired on 02/10/2024 at 09:19 UTC, resolution 2.0 m). This image is used as background image.

All images are provided under COPERNICUS by the European Union and ESA, all rights reserved.

The thematic layer has been derived from post-event satellite image by means of visual interpretation. The current Burnt Area Delineation cumulates all burnt area extents from previous post-event products. Due to dense smoke, the burnt area delineation is not complete.

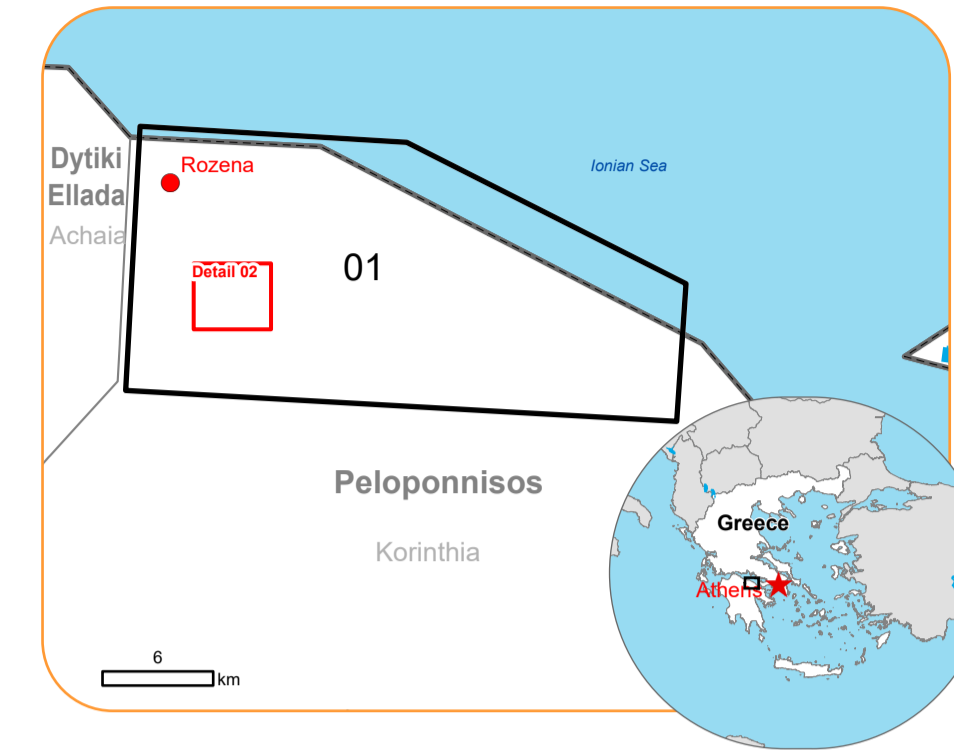
Map produced by CLS released by e-GEOS on the 02/10/2024.

Details on this activation and service conditions available through the QR code or at the link: <https://rapidmapping.emergency.copernicus.eu/EMSR767>



EMSR767 - AOI01
Wildfire in Greece
ROZENA

Situation as of 02/10/2024 09:19 UTC
Delineation MONIT02 - Detail map 02



Crisis Information

- Active Flames
- Burnt area
- General Information**
- Area of Interest
- Not Analysed

Placenames

- Placename

Built-Up Area

- Residential

Hydrography

- Lake, River

Transportation

- Main road
- Local road
- Track

	Current		Forecast	
	02 October 09:19 UTC	03 October 09:19 UTC	03 October 09:19 UTC	04 October 09:19 UTC
Wind direction and speed	3 km/h	1 km/h	1 km/h	1 km/h
Temperature and relative Humidity	17° 68%	19° 57%	24° 56%	

Data retrieved from ECMWF on October 02, 16:08 UTC. Calculated at: 38°44'2"N 22°29'57"E

Event: On the morning of 29 September 2024 at 08:00 UTC, a serious wildfire started in the Northern Peloponnese, at Corinthia near Rozena village, Greece. The event is on-going and spreading. A large number of firefighters (223), volunteers, fire engines (63), water tankers (4), construction machinery (2), airplanes (7) and helicopters (10) were mobilized to suppress the fire. The residents of Pyrgos and Ellinico villages had to be evacuated, and a 112 cell-broadcasting message was sent for this purpose. Copernicus EMS Rapid Mapping is requested to provide wildfire extent and monitoring emergency mapping.

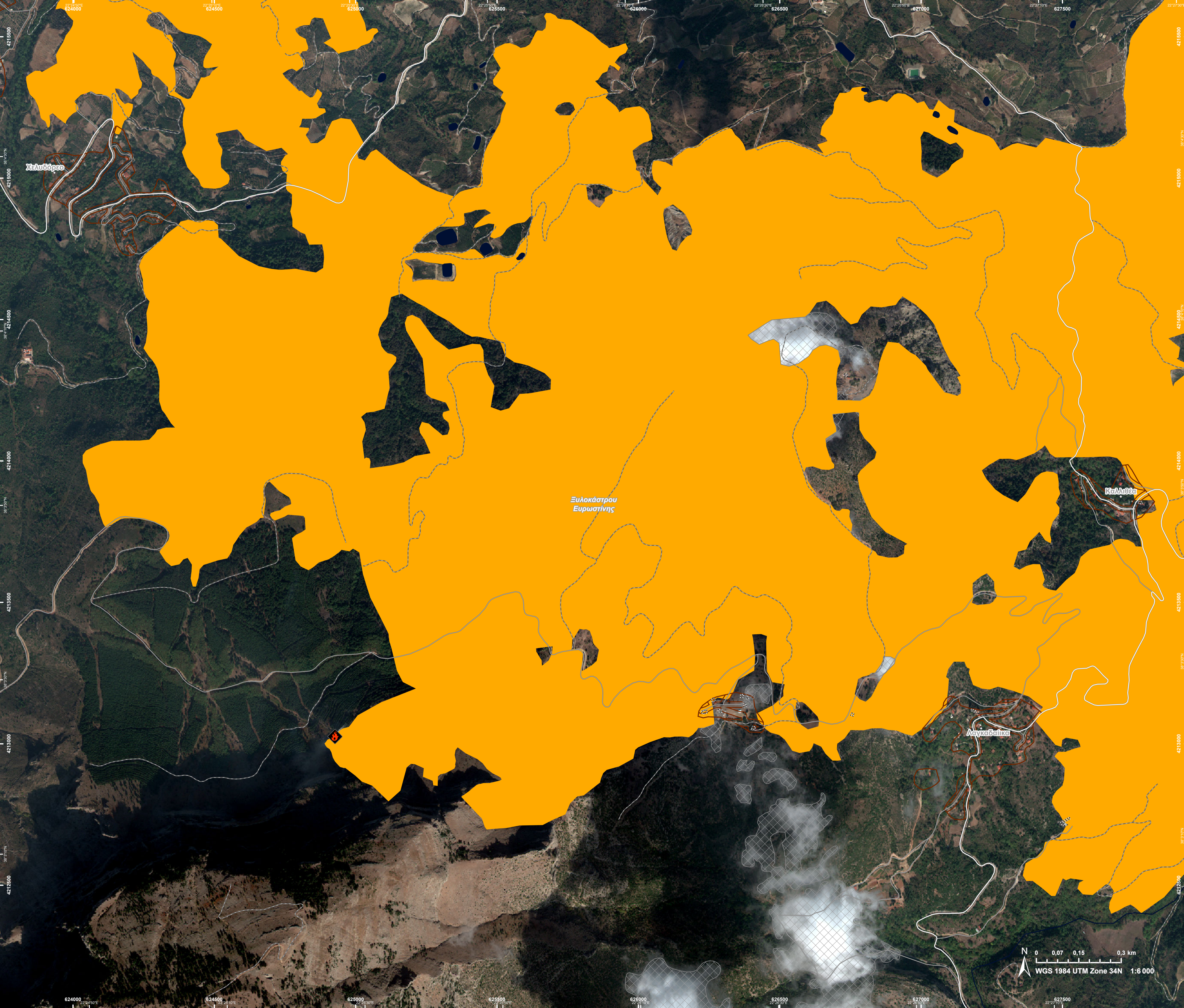
Data sources and analysis: Pre-event image: SPOT6 © Airbus DS (2023) (acquired on 15/07/2023 at 08:46 UTC, resolution 1.5 m). Post-event image: GeoEye © Maxar Technologies, Inc. (2024), (acquired on 02/10/2024 at 09:19 UTC, resolution 2.0 m). This image is used as background image.

All images are provided under COPERNICUS by the European Union and ESA, all rights reserved.

The thematic layer has been derived from post-event satellite image by means of visual interpretation. The current Burnt Area Delineation cumulates all burnt area extents from previous post-event products. Due to dense smoke, the burnt area delineation is not complete.

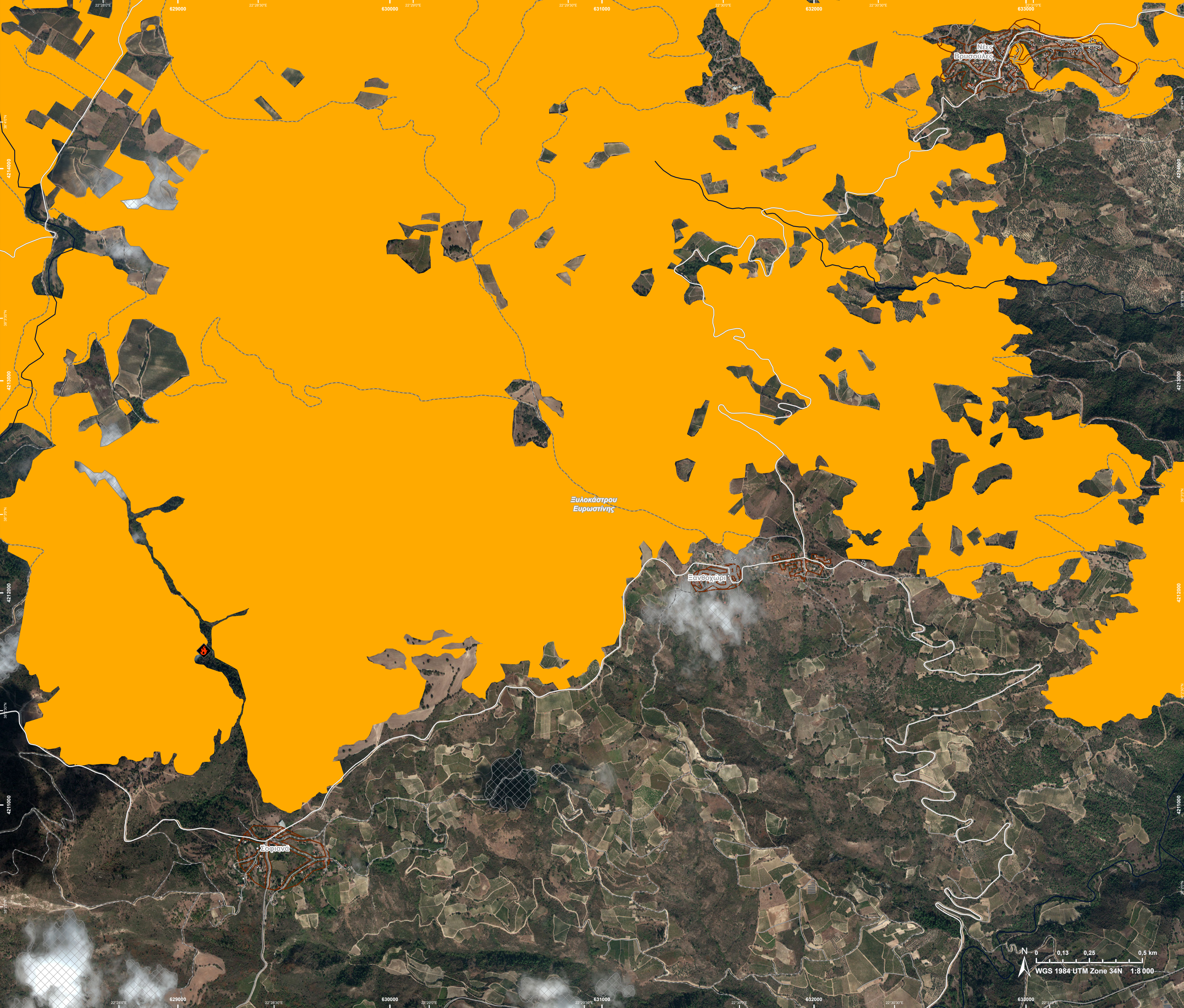
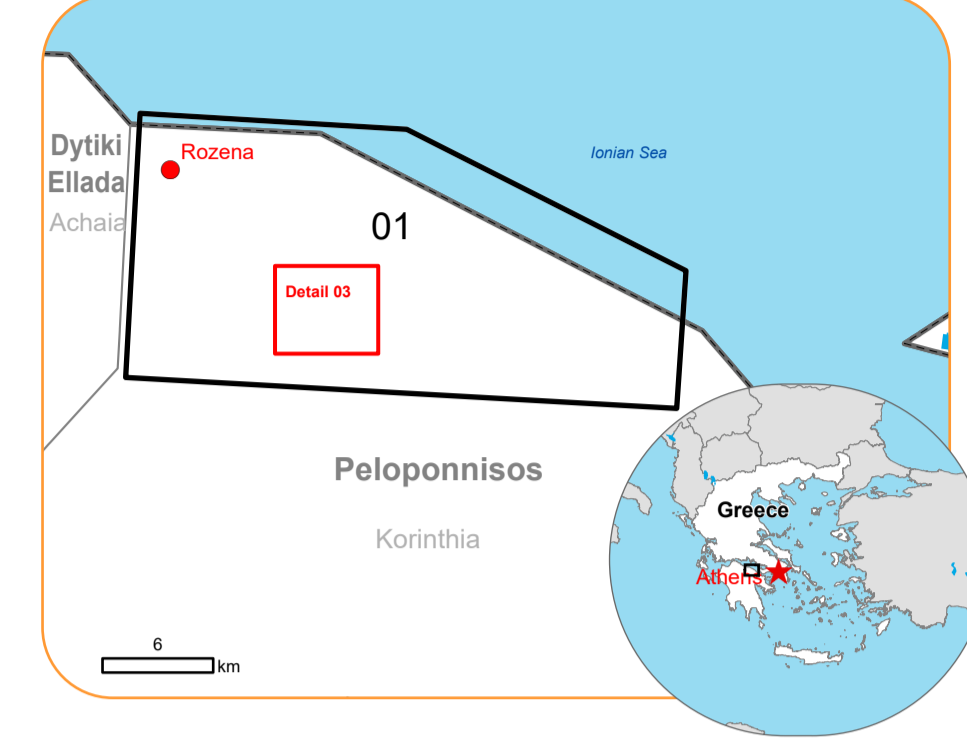
Map produced by CLS released by e-GEOS on the 02/10/2024.

Details on this activation and service conditions available through the QR code or at the link: <https://rapidmapping.emergency.copernicus.eu/EMSR767>



EMSR767 - AOI01
 Wildfire in Greece
 ROZENA

Situation as of 02/10/2024 09:19 UTC
 Delineation MONIT02 - Detail map 03



Crisis Information

- Active Flames
- Burnt area
- General Information**
- Area of Interest
- Not Analysed
- Placenames**
- Placename
- Built-Up Area**
- Residential
- Transportation**
- Main road
- Local road
- Track

	Current		Forecast	
	02 October 09:19 UTC	03 October 09:19 UTC	03 October 09:19 UTC	04 October 09:19 UTC
Wind direction and speed	3 km/h	1 km/h	1 km/h	1 km/h
Temperature and relative Humidity	17° 68%	19° 57%	24° 56%	

Data retrieved from ECMWF on October 02, 16:08 UTC. Calculated at: 38°44'2"N 22°29'57"E

Event: On the morning of 29 September 2024 at 08:00 UTC, a serious wildfire started in the Northern Peloponnese, at Corinthia near Rozena village, Greece. The event is on-going and spreading. A large number of firefighters (223), volunteers, fire engines (63), water tankers (4), construction machinery (2), airplanes (7) and helicopters (10) were mobilized to suppress the fire. The residents of Pyrgos and Ellinico villages had to be evacuated, and a 112 cell-broadcasting message was sent for this purpose. Copernicus EMS Rapid Mapping is requested to provide wildfire extent and monitoring emergency mapping.

Data sources and analysis: Pre-event image: SPOT6 © Airbus DS (2023) (acquired on 15/07/2023 at 08:46 UTC, resolution 1.5 m). Post-event image: GeoEye © Maxar Technologies, Inc. (2024), (acquired on 02/10/2024 at 09:19 UTC, resolution 2.0 m). This image is used as background image.

All images are provided under COPERNICUS by the European Union and ESA, all rights reserved.

The thematic layer has been derived from post-event satellite image by means of visual interpretation. The current Burnt Area Delineation cumulates all burnt area extents from previous post-event products. Due to dense smoke, the burnt area delineation is not complete.

Map produced by CLS released by e-GEOS on the 02/10/2024.

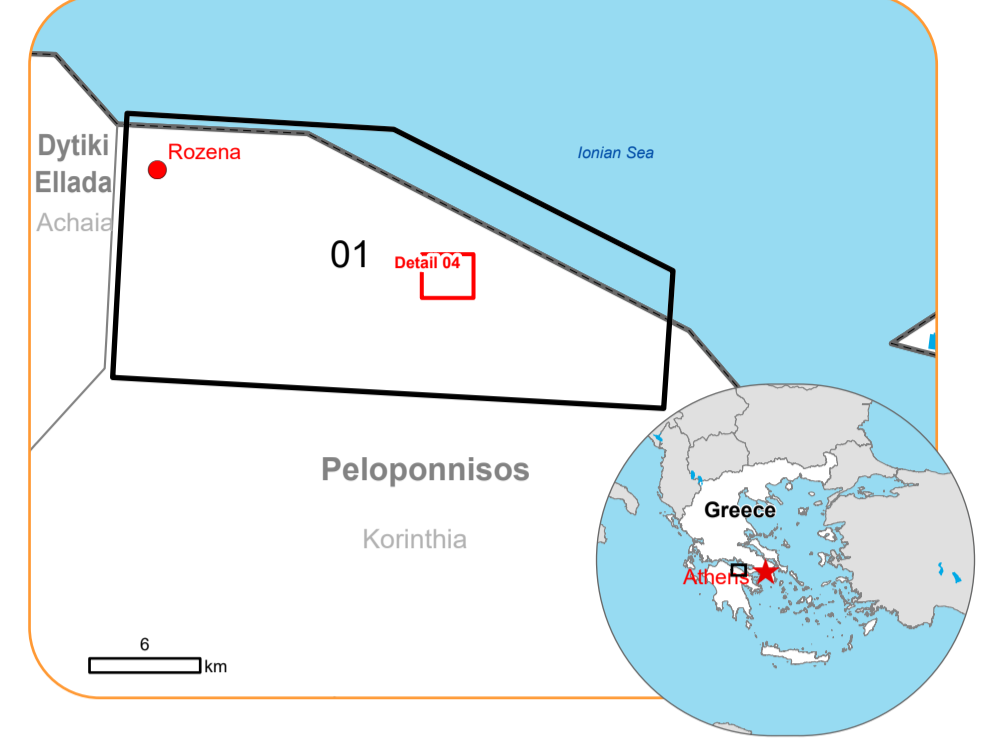
Details on this activation and service conditions available through the QR code or at the link: <https://rapidmapping.emergency.copernicus.eu/EMSR767>





EMSR767 - AOI01
Wildfire in Greece
ROZENA

Situation as of 02/10/2024 09:19 UTC
 Delineation MONIT02 - Detail map 04



Crisis Information

- Burnt area
- Area of Interest
- Local road
- Track

	Current		Forecast	
	02 October 09:19 UTC	03 October 09:19 UTC	03 October 09:19 UTC	04 October 09:19 UTC
Wind direction and speed	3 km/h	1 km/h	1 km/h	1 km/h
Temperature and relative Humidity	17° 68%	19° 57%	24° 56%	

Data retrieved from ECMWF on October 02, 16:08 UTC. Calculated at: 38°44'2"N 22°29'57"E

Event: On the morning of 29 September 2024 at 08:00 UTC, a serious wildfire started in the Northern Peloponnese, at Corinthia near Rozena village, Greece. The event is on-going and spreading. A large number of firefighters (223), volunteers, fire engines (63), water tankers (4), construction machinery (2), airplanes (7) and helicopters (10) were mobilized to suppress the fire. The residents of Pyrgos and Ellinico villages had to be evacuated, and a 112 cell-broadcasting message was sent for this purpose. Copernicus EMS Rapid Mapping is requested to provide wildfire extent and monitoring emergency mapping.

Data sources and analysis: Pre-event image: SPOT6 © Airbus DS (2023) (acquired on 15/07/2023 at 08:46 UTC, resolution 1.5 m). Post-event image: GeoEye © Maxar Technologies, Inc. (2024), (acquired on 02/10/2024 at 09:19 UTC, resolution 2.0 m). This image is used as background image.

All images are provided under COPERNICUS by the European Union and ESA, all rights reserved.

The thematic layer has been derived from post-event satellite image by means of visual interpretation. The current Burnt Area Delineation cumulates all burnt area extents from previous post-event products. Due to dense smoke, the burnt area delineation is not complete.

Map produced by CLS released by e-GEOS on the 02/10/2024.

Details on this activation and service conditions available through the QR code or at the link: <https://rapidmapping.emergency.copernicus.eu/EMSR767>



Consequences within the AOI				
	Unit of measurement	Affected	Total in AOI	
Burnt area	ha		7 140,2	
Active Flames	No.		2	
Estimated population	Number of inhabitants	~ 450	~ 16 000	
Built-up	Residential Buildings	ha	27,0	799,8
	Office buildings	ha	0	0,8
	Industrial buildings	ha	0	0,3
	Non-residential farm buildings	ha	0,7	0,7
	Cemetery	ha	0,1	4,0
Transportation	Highways	km	0,02	74,6
	Primary Road	km	0	35,6
	Secondary Road	km	37,8	115,4
	Local Road	km	18,8	429,2
	Cart Track	km	164,0	826,5
	Long-distance railways	km	0	97,2
Facilities	Breakwater	ha	0	0,6
	Constructions for mining or extraction	ha	3,2	7,1
	Power plant constructions	ha	0	1,4
	Sport and recreation constructions	ha	0	4,8
	Long-distance pipelines, communication and electricity lines	km	0,6	33,3
	Breakwater	km	0	0,01
Land use	Shrub and/or herbaceous vegetation association	ha	4 602,3	12 198,1
	Heterogeneous agricultural areas	ha	962,9	6 705,9
	Permanent crops	ha	936,4	7 692,6
	Forests	ha	498,8	2 750,0
	Arable land	ha	52,7	75,8
	Pastures	ha	48,5	70,2
	Open spaces with little or no vegetation	ha	35,3	517,8
	Other	ha	3,4	7 658,5

Disclaimer:

Full disclaimer and other helpful information available in the online manual:
<https://emergency.copernicus.eu/mapping/ems/online-manual-rapid-mapping-products>
 © European Union / Copernicus Emergency Management Service

Data Access:

All data displayed on the map(s), as well as the Physiography and Land Use - Land Cover layers, are available in the Crisis Information Package and the Base Layer Package (for reference data). The table above is available in editable format in the Crisis Information Package. All products and data are also available for download on the portal.

Access to the portal

**Estimated Population:**

Estimated population is based on Copernicus Global Human Settlement Layer (GHSL) dataset. Additional population datasets and analysis are available in the summary table.

Data Sources:

Base Vector Layers: OpenStreetMap © OpenStreetMap contributors (2024), Wikimapia.org, GeoNames 2015, Corine Land Cover (CLC) 2018, EuroBoundaryMap 2017 ©EuroGeographics.
 Inset Maps: JRC 2013, GISCO 2010 © EuroGeographics, Natural Earth 2012, CCM River DB © EUJRC2007, GeoNames 2015.
 Digital Elevation Model: COP-DEM-EEA-10-R product © DLR e.V. (2014-2018) and
 © Airbus Defence and Space GmbH (2020) provided under COPERNICUS by the European Union and ESA, all rights reserved.