

Evros - GREECE Flood - 10/12/2014 Delineation Map - Detail01 - Moni01

Production date: 15/12/2014

Cartographic Information

1:50000

Full color ISO A1, high resolution (300 dpi)

Map Coordinate System: WGS 1984 UTM Zone 35N
Graticule: WGS 84 geographical coordinates



Legend

Crisis Information

Flooded Area (14/12/2014 16:06 UTC)

General Information

Area of Interest

Administrative boundaries

International Boundary

Settlements

Populated Place

Residential

Point of Interest

Institutional

Transportation

Hydrology

River

River

Reservoir

Transportation

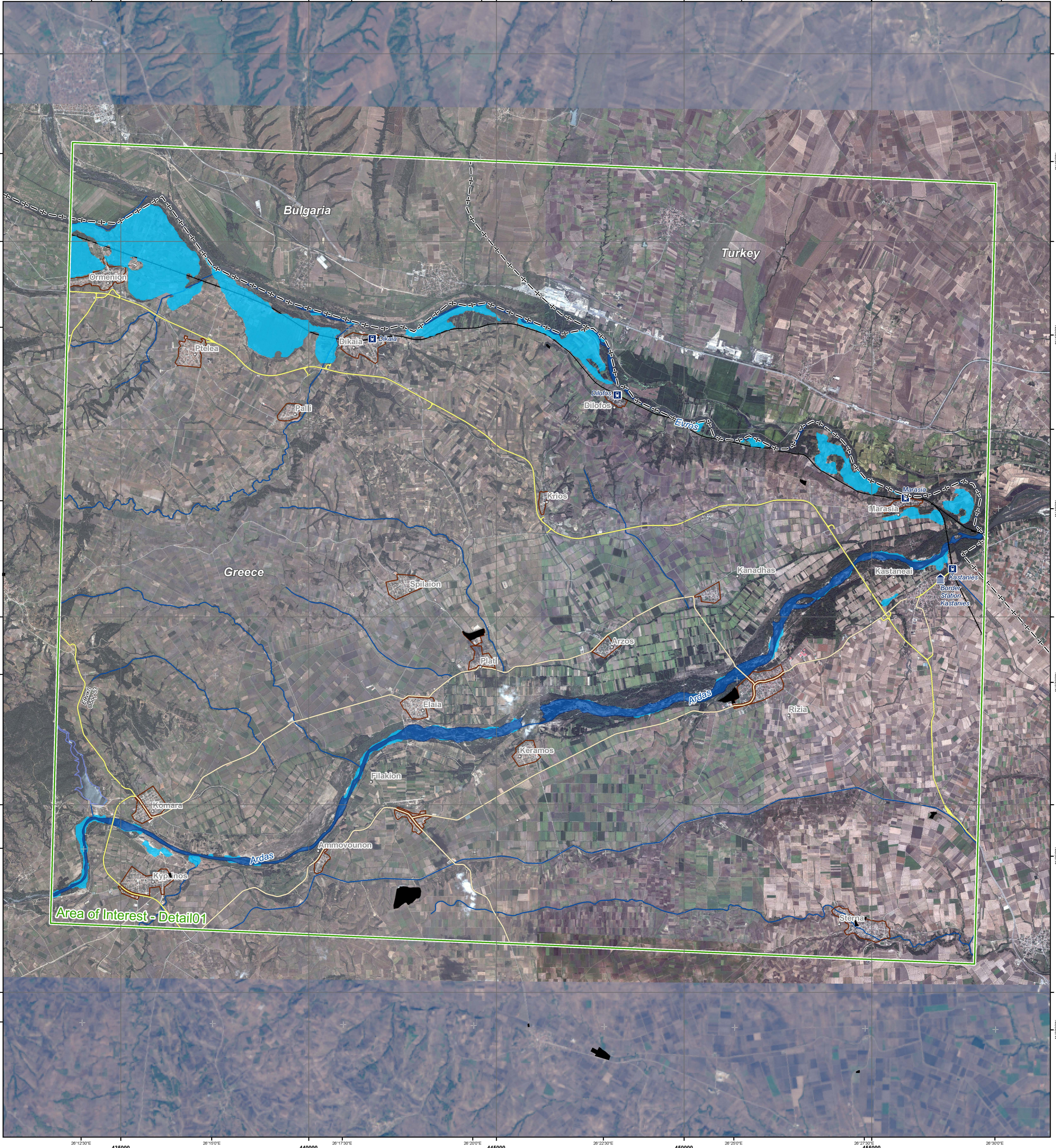
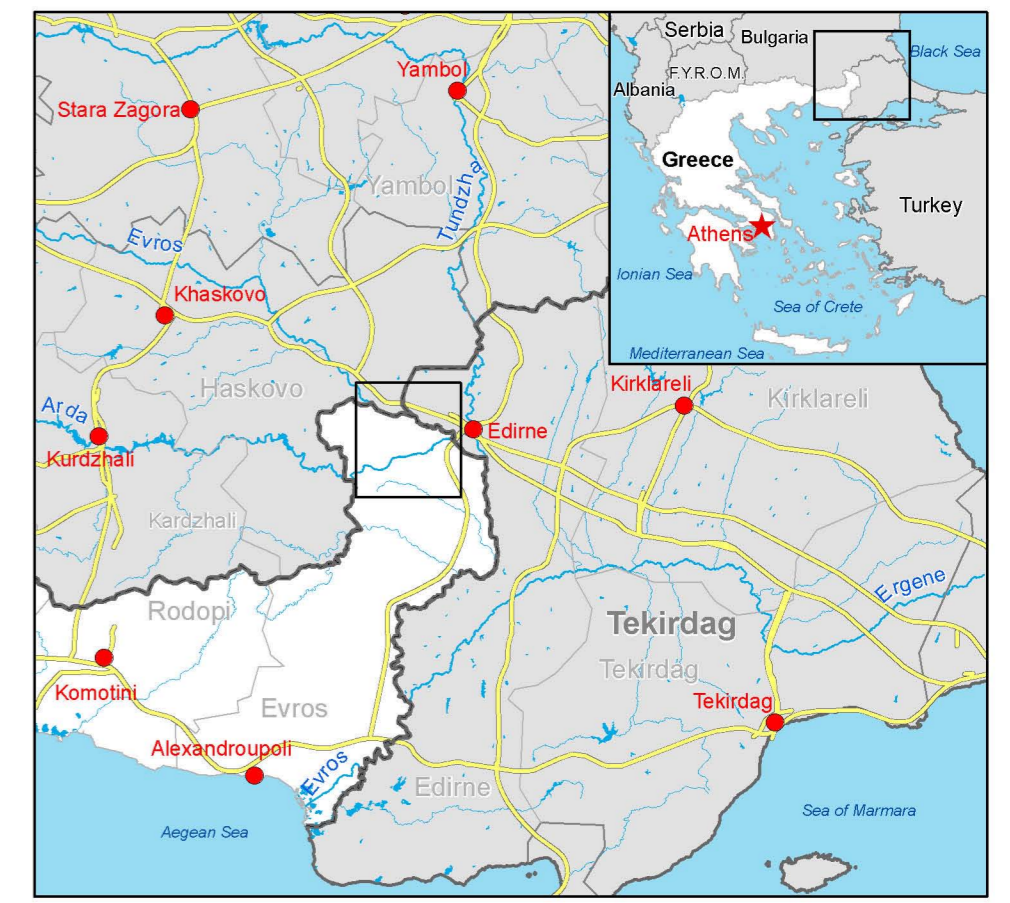
Railway

Primary Road

Secondary Road

Consequences within the detail AOI01 on 14/12/2014

		Affected	Total in AOI
Flooded area	ha	1294	
Estimated population	inhabitants	1389	9732
Settlements	Residential	0,5	703
Transportation	Primary roads	0	54
	Secondary roads	0	61
	Railways	6,2	33



Map Information

Due to heavy rainfall since 4 December 2014, many areas of the Evros Regional Unit have been flooded. Furthermore, the Greek authorities have been informed by Bulgaria that large amounts of water are expected to enter the Greek territory in the Evros Regional Unit. The flooding in the broader area of the Evros Regional Unit has already caused damage in livestock, agricultural areas and infrastructure. The General Secretary for Civil Protection has declared the affected areas in a state of emergency. The products from Copernicus/EMS will be used by the competent authorities of the Evros Regional Unit and the affected municipalities (Civil Protection authorities, public services, etc.) for emergency response operations.

Data Sources

Inset maps based on: Administrative boundaries (JRC 2013, GISCO 2010, © EuroGeographics), Hydrology, Transportation (Natural Earth, 2012, CC BY-NC/SD 4.0), Settlements (Geonames, 2013), ESRI World Imagery © Esri, Digitalglobe (acquired on 19/08/2010, 18/09/2010 and 08/12/2011, GSD 2.5 m, approx. 0.2% cloud coverage), provided under ESA GSC-DA DWH License. Landsat-8 © USGS (acquired on 04/11/2014, GSD 30 m, approx. 8.8% cloud coverage). TerraSAR-X © Infoterra GmbH (acquired on 14/12/2014 16:06 UTC, GSD 5 m). All rights reserved. Base vector layers based on OpenStreetMap © OpenStreetMap contributors, Wikimapia.org, GeoNames, GADM (approx. 1:10000, extracted on 12/12/2014), refined by e-GEOS. Source information is included in vector data. Population data: LandScan 2010 © UT BATTELLE, LLC. All Data sources are complete and with no gaps.

Dissemination/Publication

Delivery formats are GeoTIFF, GeoPDF, GeoJPEG and vectors (shapefile and KML formats).

Framework

The products elaborated in the framework of current mapping in rush mode activation are realized to the best of our ability, within a very short time frame during a crisis, optimising the available data and information. All geographic information has limitations due to scale, resolution, date and interpretation of the original data sources. The products are compliant with GIO-EMS RUSH Product Portfolio specifications.

Map Production

The present map shows basic topographic features such as transportation, hydrology and settlements in the area of Evros (GREECE). These basic topographic features are derived from public datasets, refined by means of visual interpretation of pre-event ESRI World Imagery. Thematic layers, assessing the delineation of the event, have been derived from post-event TerraSAR-X © Infoterra GmbH (acquired on 14/12/2014 16:06 UTC, GSD 5 m). All rights reserved. All satellite images have been radiometrically enhanced, geocoded (using SRTM elevation data) and co-registered to the pre-event image. The estimated geometric accuracy of this product is 10 m CE90 or better, from native positional accuracy of the background satellite image. The estimated thematic accuracy of the product is 85% or better, based on previous experience in using high-resolution SAR for flood extent delineation. Please be aware that the thematic accuracy might be lower in urban and forested areas due to known limitations of the analysis technique. Only the area enclosed by the Area of Interest has been analyzed. Map produced on 15/12/2014 by e-GEOS under contract 257219 with the European Commission. All products are © of the European Commission. Name of the release inspector (quality control): e-GEOS (ODO). E-mail: rush@ems-gmes.eu