

# Epirus - GREECE

## Flood - 01/02/2015

### Reference Map - Detail02

Production date: 03/02/2015

#### Cartographic Information

1:35000

Full color ISO A1, high resolution (300 dpi)

0 0.5 1 2 km

Grid: WGS 1984 UTM Zone 34N map coordinate system  
Tick marks: WGS 84 geographical coordinate system

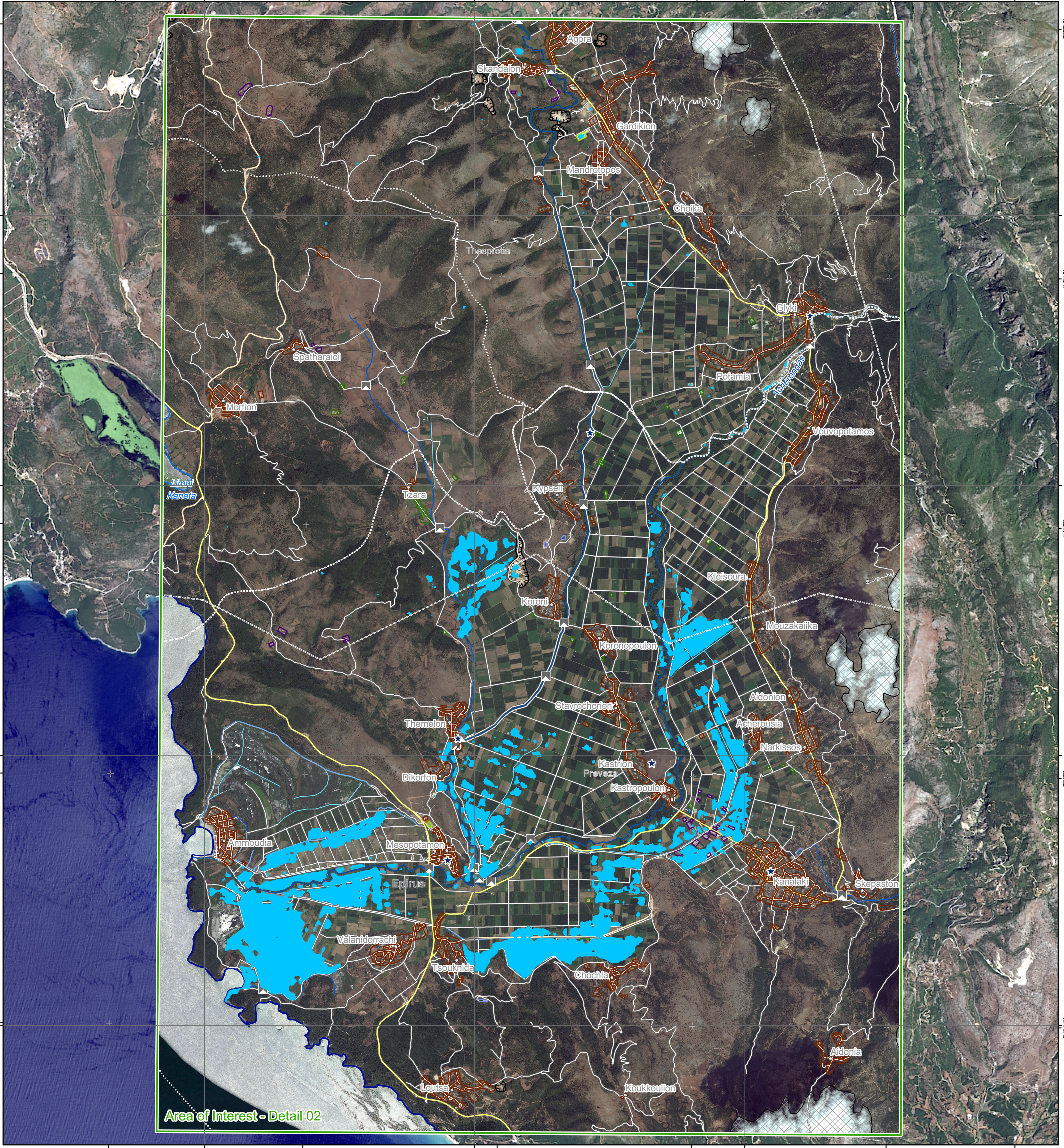


#### Legend

- Crisis Information**
- Flood Area (02/02/2015 16:31 UTC)
- General Information**
- Area of Interest
- Clouds
- Administrative boundaries**
- Province
- Municipality
- Settlements**
- Residential
- Agricultural
- Industrial
- Recreational
- Religious
- Urbanized Multi-functional
- Point of Interest**
- ★ Religious
- Transportation**
- Bridge
- Primary Road
- Secondary Road
- Local Road
- Industry / Utilities**
- Quarry
- Hydrology**
- Coastline
- River
- Stream
- Canal
- Ditch
- Lake
- Reservoir

#### Consequences within the detail AOI on 02/02/2015

		Affected	Total in AOI
Flooded area	ha	1044	
Estimated population	Inhabitants	1	2381
Settlements	Industrial	ha	0.7
	Residential	ha	0.1
	Religious	ha	0
	Recreational	ha	0.7
	Cemetery	ha	0
	Agricultural	ha	0.5
	Primary roads	km	0.2
Transportation	Secondary roads	km	0.4
	Local roads	km	18.4
	Bridges	km	0
Utilities	Quarry	ha	2.2
			37



Area of Interest - Detail 02

**Map Information**  
Due to the heavy rainfall in the last days, many areas in the western part of Greece have been flooded. The rivers Arachthos, Achéron, Kalamas and Louros have been flooded and damages to infrastructures have been reported. Villages that are located in the delta of Arachthos river have been evacuated for precautionary reasons. The core users of the maps are Disaster Response Authorities involved in the operations.

**Data Sources**  
Administrative boundaries (JRC 2013, GISCO 2010, © EuroGeographics), Hydrology, Transportation (Natural Earth, 2012, CCM River DB © EU-JRC 2007), Settlements (GeoNames, 2013), Sentinel-1A (acquired on 02/02/2015 16:31 UTC, GSD 10 m) provided by the European Space Agency, ESRI World Imagery © Esri, DigitalGlobe (acquired on 05/07/2010 GSD 2.5 m, approx. 1% cloud coverage), Landsat-8 © USGS (acquired on 04/07/2014, GSD 15 m, approx. 0% cloud coverage), Base vector layers based on OpenStreetMap © OpenStreetMap contributors, Wikimapia.org, GeoNames (approx. 1:10000, extracted on 02/02/2015), refined by GAF AG. Source information is included in vector data. Population data: Landscan 2010 © UT BATTELLE, LLC. All Data sources are complete and with no gaps.

**Dissemination/Publication**  
Delivery formats are GeoTIFF, GeoPDF, GeoJPEG and vectors (shapefile and KML formats).

**Framework**  
The products elaborated in the framework of current mapping in rush mode activation are realized to the best of our ability, within a very short time frame during a crisis, optimising the available data and information. All geographic information has limitations due to scale, resolution, date and interpretation of the original data sources. The products are compliant with GIO-EMS RUSH Product Portfolio specifications.

**Map Production**  
The present map shows basic topographic features such as transportation, hydrology and settlements in the area of Epirus (GREECE). These basic topographic features are derived from public datasets, refined by means of visual interpretation of pre-event ESRI World Imagery. The estimated geometric accuracy of this product is 15 m CE90 or better, from native positional accuracy of the background satellite image. The estimated thematic accuracy of this product is 85% or better, as it is based on visual interpretation of recognizable items on very high resolution optical imagery. Shadowed areas are zones of lower interpretation accuracy due to the poorer image radiometry. Only the area enclosed by the Area of Interest has been analyzed. Map produced on 03/02/2015 by GAF AG under contract 257219 with the European Commission. All products are © of the European Commission. Name of the release inspector (quality control): GAF AG (ODO). E-mail: rush@ems-gmes.eu

Flood  
 Civil Protection  
 Response  
 Delineation Map - Detail  
 Planning  
 Sentinel-1A © European Space Agency  
 01-02-2015