

# Arla - GREECE

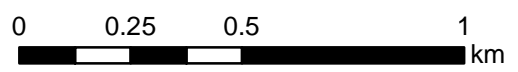
## Fire - Situation as of 24/09/2017

### Delineation Map - MONIT01

#### Cartographic Information

1:17000

Full color ISO A1, high resolution (300 dpi)



Grid: WGS 1984 UTM Zone 34N map coordinate system  
Tick marks: WGS 84 geographical coordinate system

#### Legend

##### Crisis Information

Burnt Area (24-09-2017)

##### General Information

Area of Interest

##### Settlements

Populated Place

Residential

Agricultural

Cemetery

Industrial

##### Hydrology

River

##### Physiography

Contour lines and elevation (m)

##### Industry / Utilities

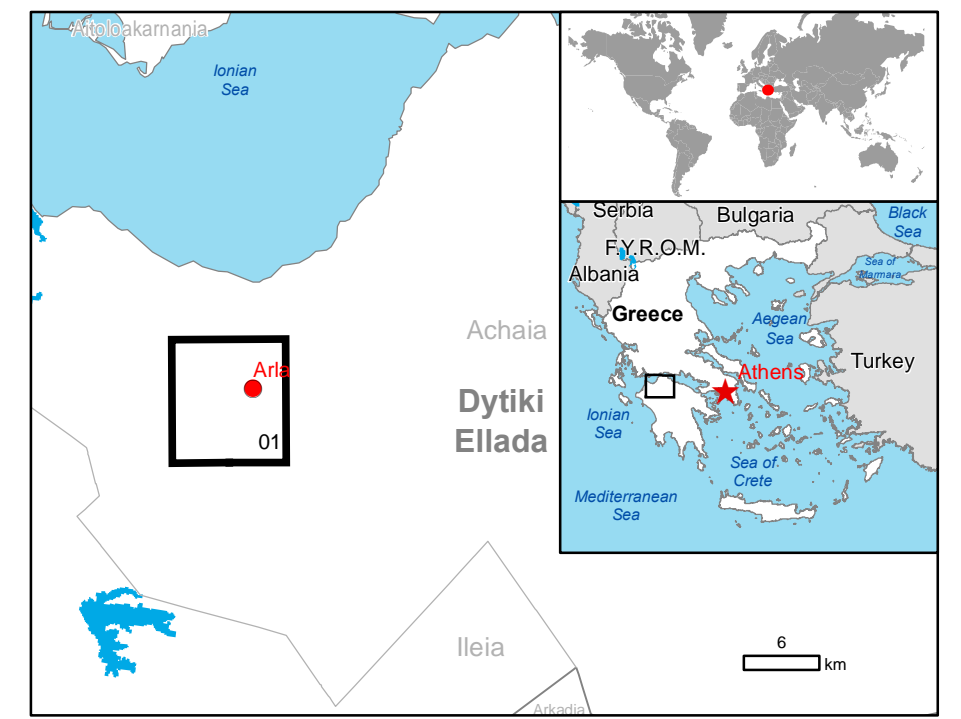
Quarry

##### Transportation

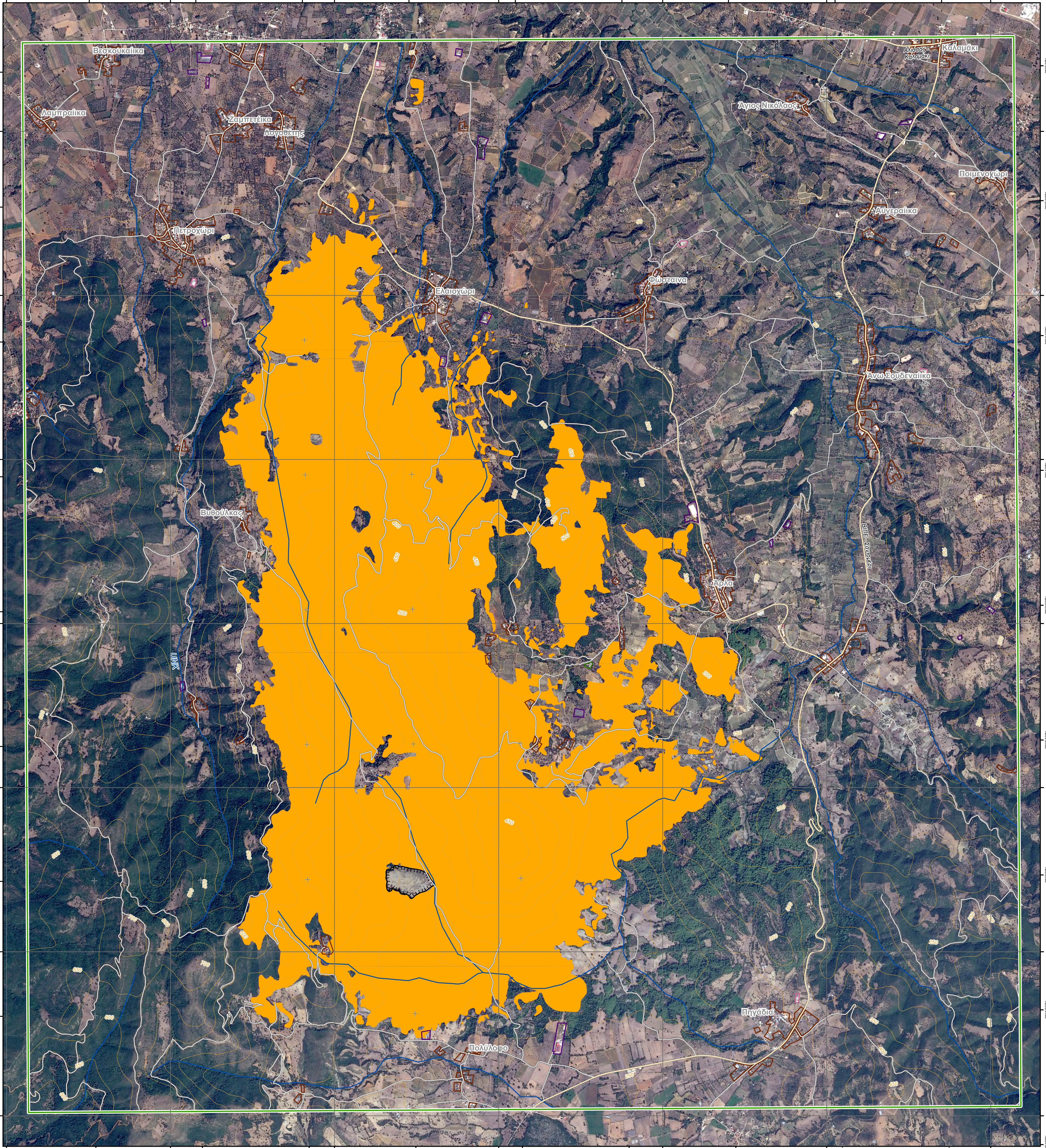
Secondary Road

Local Road

Consequences within the AOI			
	Unit of measurement	Affected	Total in AOI
Burnt area	ha	1800.4	
Estimated population	No. of people	20	2646
Settlements	Residential	ha	120.7
	Agriculture	ha	0.3
	Cemetery	ha	1.9
	Industrial	ha	12.0
Transportation	Secondary roads	km	26.2
	Local roads	km	162.2
Utilities	Quarry	ha	7.8



546000 21°32'0"E 547500 21°32'40"E 549000 21°33'20"E 549000 21°34'0"E 550500 21°34'40"E 552000 21°35'20"E 552000 21°36'0"E 553500 21°36'40"E 555000 21°37'20"E 555000



#### Map Information

On 11/09/2017 a forest fire started in Greece close to the villages of Sandomeri, Politofo and Arla and continued for several days, affecting more than 1000 hectares. The General Secretary for Civil Protection from Greece declared the municipality of Western Achaia in State of Emergency, and the authorities ordered the evacuation of the Arla village.

The present map shows the fire delineation in the area of Arla (Greece). The thematic layer has been derived from post-event satellite imagery using a semi-automatic approach. The estimated geometric accuracy is 20 m or better, from native positional accuracy of the background satellite image.

#### Data Sources

Pre-event image: ESRI World Imagery © DigitalGlobe (acquired on 01/07/2014, GSD 0.6 m, approx. 5% cloud coverage in AOI).  
Post-event image: SPOT6 © Airbus DS (2017), (acquired on 24/09/2017 at 09:04 UTC, GSD 1.5 m, approx. 00% cloud coverage in AOI, 8° off-nadir angle), provided under COPERNICUS by the European Union and ESA, all rights reserved.

Base vector layers: OpenStreetMap © OpenStreetMap contributors, Wikimapia.org, GeoNames 2015, refined by the producer.  
Inset maps: JRC 2013, © EuroGeographics, Natural Earth 2012, CCM River DB © EUJRC2007, GeoNames 2013.

Population data: Landscan 2010 © UT BATTELLE, LLC  
Digital Elevation Model: EU-DEM (25 m)

#### Disclaimer

Products elaborated in this Copernicus EMS Rapid Mapping activity are realized to the best of our ability, within a very short time frame, optimising the available data and information. All geographic information has limitations due to scale, resolution, date and interpretation of the original sources. The map and the information content are derived from satellite data without in situ validation. No liability concerning the contents or the use thereof is assumed by the producer and by the European Union.

Map produced by e-GEOS released by e-GEOS (ODO).  
For the latest version of this map and related products visit <http://emergency.copernicus.eu/EMSR242>

jrc-ems-rapidmapping@ec.europa.eu  
© European Union  
For full Copyright notice visit <http://emergency.copernicus.eu/mapping/ems/cite-copernicus-ems-mapping-portal>

#### Relevant date records

Event	11/09/2017	Situation as of	24/09/2017
Activation	19/09/2017	Map production	25/09/2017

